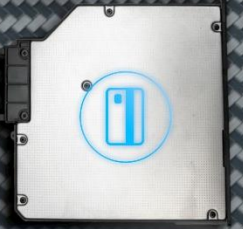
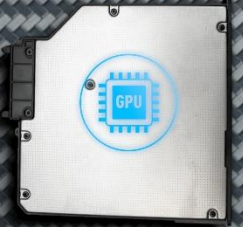


TOUGHBOOK





TOUGHBOOK 55

14" SEMI-RUGGED WINDOWS 10 PRO NOTEBOOK WITH HD DISPLAY

TOUGHBOOK 55 with Windows 10 Pro, magnesium chassis, flexible configurations and universal bay is the most versatile 14" semi-rugged Toughbook ever built, but doesn't compromise on durability, with a unique 'honeycomb' design for improved strength and splash resistant design.

In terms of flexibility, the TOUGHBOOK 55 is equally outstanding. It offers a huge array of flexible configuration options, making it easier for customers to have exactly the device they want.

HD Model:

- Intel® Core™ i5-8365U vPro™ Processor
- Windows 10 Pro
- 14" HD Active Matrix LCD
- Lightweight and slim design (approx. 2.08 kg and 32.8mm)
- 8GB RAM and 256GB SSD as standard
- 2x USB 3.1, 1x USB 3.1 type C PD, 1x HDMI, 1x LAN and micro SDCX
- Front and Rear Expansion Slot
- TOUGHBOOK Universal Bay
- Long battery life of up to 20 hours (MobileMark 2014)
- Dedicated Global Positioning and 4G LTE optional
- -20 °C to +60 °C operating temperature
- Robust honeycomb-style magnesium casing with carry handle
- IP53 Ingress Protection*

- Withstands drops from a height of 91cm*
- Shock and vibration protected for vehicle docking

Full HD Model:

All the above, plus:

- 14" Full-HD Active Matrix LCD, 1.000cd/m2 brightness
- Long battery life of up to 19 hours (MobileMark 2014)

Full HD Touchscreen Model:

All the above, plus:

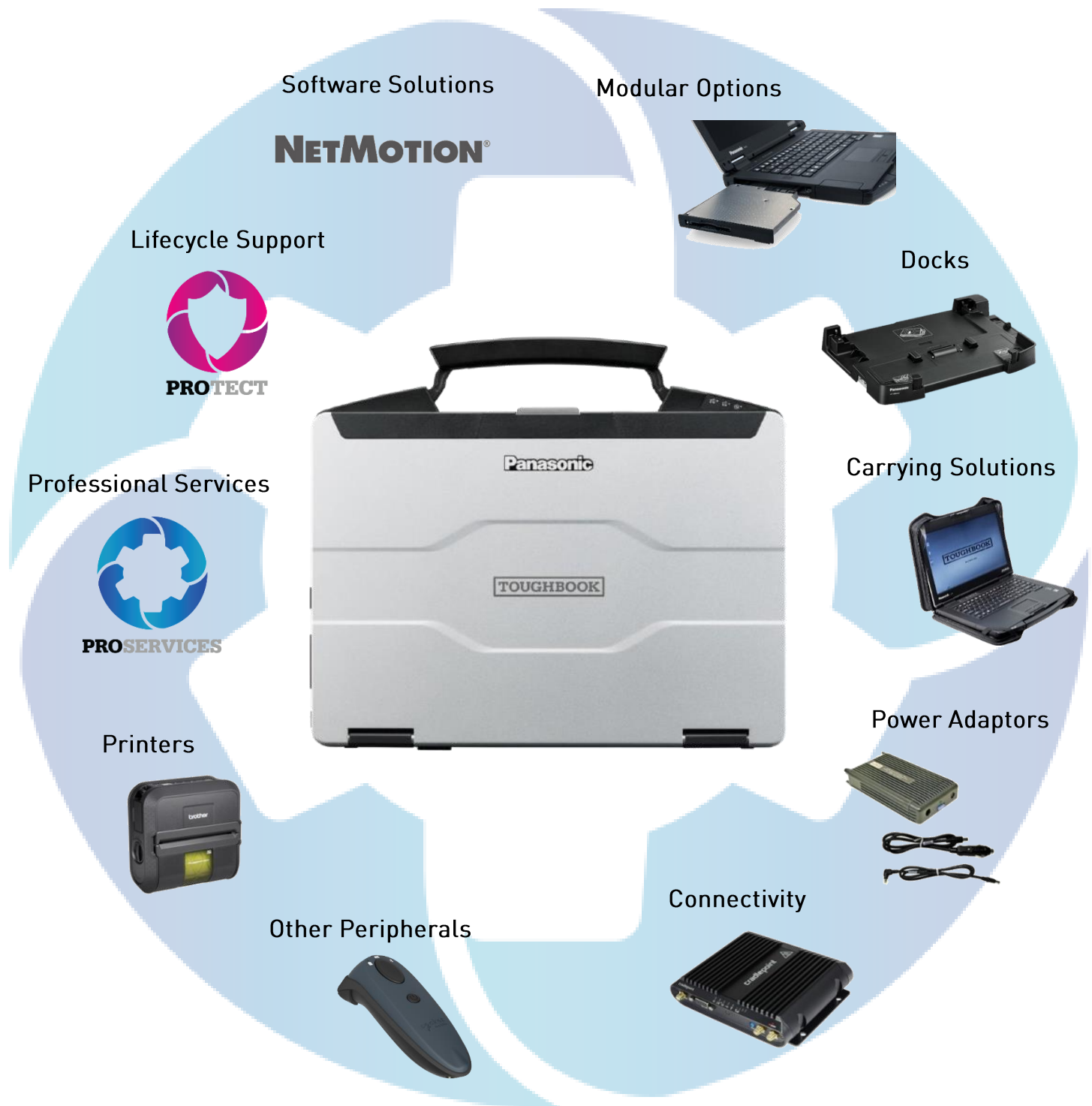
- 14" Full-HD Active Matrix, capacitive Touch Screen, 1.000cd/m2 brightness
- Long battery life of up to 19 hours (MobileMark 2014)

*Designed for MIL-STD-810H. Test by an independent third party lab following 2nd half of 2019

All technical specifications are subject to change without notice.



TOUGHBOOK 55 ACCESSORY ECOSYSTEM



All accessories in this guide are fully tested and certified in the Panasonic factory by Panasonic engineers

UNIVERSAL BAY OPTIONS

TOUGHBOOK
Universal Bay

2nd SSD Packs:

Option	SKU
256 GB	FZ-VSD55121U
512 GB	FZ-VSD55151U
1 TB	FZ-VSD551T1U
OPAL 256 GB	FZ-VSD55122U
OPAL 512 GB	FZ-VSD55152U
OPAL 1 TB	FZ-VSD551T2U



Other Options:

DVD Multi Drive

Part No: FZ-VDM551U



Discrete GPU

(AMD Radeon™ Pro WX 4150)

Part No: FZ-VGT551U



Blu-ray Disc Drive

Part No: FZ-VBD551U



Smart Card Reader

Part No: FZ-VSC552U



All technical specifications are subject to change without notice.

FRONT EXPANSION SLOT OPTIONS

Front Expansion Slot

Smart Card Reader

Part No: FZ-VSC551U



Contactless Smart Card Reader (HF-RFID)

(HF-RFID)

Part No: FZ-VNF551U



Finger Print Reader

Part No: FZ-VFP551U



Battery Pack

Common for standard battery.

Part No: FZ-VZSU1HU



RAM Modules:

Option	SKU
8GB	FZ-BAZ1908
16GB	FZ-BAZ1916



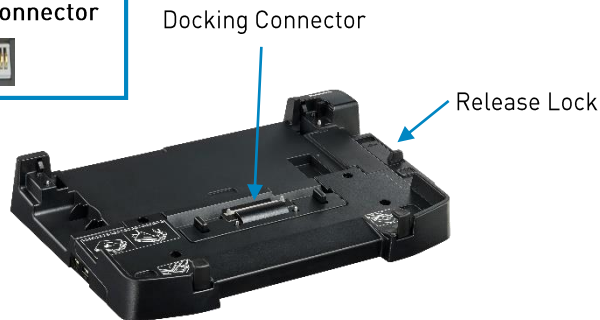
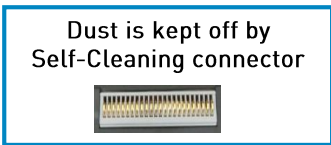
All technical specifications are subject to change without notice.

DOCKING SOLUTIONS

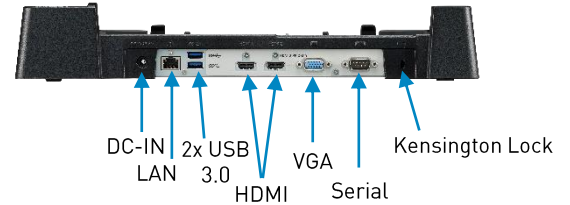
TOUGHBOOK 55 Desktop Port Replicator

Part No: FZ-VEB551U

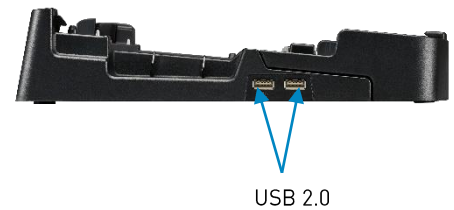
CF-VEB541AU is also compatible with the TOUGHBOOK 55.



Rear



Left



TOUGHBOOK 54/55 Vehicle Dock (Gamber-Johnson)

Compatible with TOUGHBOOK 54 and TOUGHBOOK 55.

- Optional antenna pass-through
- Ports: 16V DC-in; 1 x LAN; 2 x USB 3.0; 1 x Serial; 1 x HDMI; 1 x VGA
- VESA 75mm mounting pattern
- Power supply not included

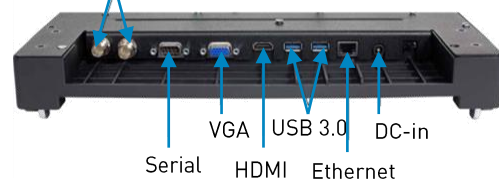
Size: 89 x 342 x 301 mm
Weight: 2.5 kg

Part Nos:

- PCPE-GJ54V01 No RF
- PCPE-GJ54V02 Dual RF
- PCPE-GJ54V03 Non-electronic



Dual Antenna Pass-Through (TNC)



TOUGHBOOK 54/55 Vehicle Dock (Havis)

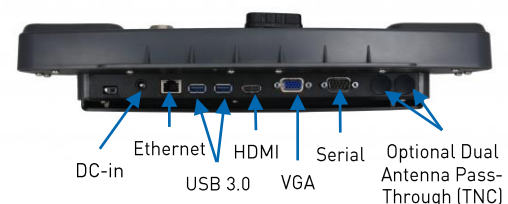
Compatible with TOUGHBOOK 54 and TOUGHBOOK 55.

- Optional antenna pass-through
- Ports: 16V DC-in; 1 x LAN; 1 x VGA; 1 x HDMI; 1 x Serial; 2 x USB 3.0
- VESA 75mm mounting pattern
- Power supply not included
- Keyed alike unless otherwise stated

Size: 384 x 348 x 76 mm
Weight: 2.45 kg

Part Nos:

- PCPE-HAV5401 No RF
- PCPE-HAV5402 Dual RF
- PCPE-HAV5403 Non-electronic



All technical specifications are subject to change without notice.

CARRYING SOLUTIONS

TOUGHBOOK 55 Always-On Case

Part No: *Coming soon!*



TOUGHBOOK 54/55 Mobility Kit

The shoulder strap attaches directly to the TOUGHBOOK 54 built-in handle for ergonomic mobility.*

Weight: 0.2 kg / 0.4 lb

Part No: PCPE-INFSTH1



**Picture shows kit being used with TOUGHBOOK 20*

User Harness

Adjustable four-point harness transforms any Always-On case into a hands-free accessory.

Weight: 0.2 kg / 0.4 lb

Part No: PCPE-INFUVA1



ComUniversal Bag

Weight: 1.47 kg / 3.25 lb

Size: 381 x 330 x 152 mm

Part No: PCPE-INFCOM2

MOQ: 500



Synergy Rucksack

Weight: 1 kg / 2.2 lbs

Size: 254 x 330 x 460 mm

Part No: PCPE-WENSYN1



Legacy 16" Double Laptop Case

Size: 380 x 430 x 110 mm

Part No: PCPE-CC17652



All technical specifications are subject to change without notice.

POWER MANAGEMENT SOLUTIONS

Main Battery

(6Cell, 68 Wh)

Part No: FZ-VZSU1HU



AC Adaptor

Part No: CF-AA5713A2*

*E: UK; G: EU; T: Italy; D: Switzerland



4-bay Battery Charger

Part No: FZ-VCB551*

Includes AC adaptor

*E: UK; G: Continental; T: Italian



Auto Adaptor (120W)

Part No: CF-LND1224A



MIL SPEC Auto Adaptor (120W)

With bare wire input cable.

Part No: PCPE-LND3676



PRODUCTIVITY SOLUTIONS

TOUGHBOOK 55 Stylus

For Touchscreen model only.

Part No: FZ-VNP551U



TOUGHBOOK 55 Tether

Part No: FZ-VNT005U



Toughmate Stylus Tether

Part No: PCPE-INFUVA2



USB Optical Mouse

Part No: PCPE-LOGM901



All technical specifications are subject to change without notice.

CONNECTIVITY SOLUTIONS



Ruggedised LTE, WIFI and GPS router with cloud management

Part Nos:

- **PCPE-CRD96B1** - IBR900-600M router with 1yr cloud management bundle
- **PCPE-CRD96B3** - IBR900-600M router with 3yr cloud management bundle
- **PCPE-CRD96B5** - IBR900-600M router with 5yr cloud management bundle
- **PCPE-CRD96F1** - IBR900-600M router with 1yr cloud management bundle and vehicle antenna
- **PCPE-CRD96F3** - IBR900-600M router with 3yr cloud management bundle and vehicle antenna
- **PCPE-CRD96F5** - IBR900-600M router with 5yr cloud management bundle and vehicle antenna

LAN Port Saver Cable

Part No: PCPE-LANCA1



Semi-rugged cloud managed LTE router

Part Nos:

- **PCPE-CRD6001** - IBR600C Wi-Fi router with 3-year NetCloud Essentials support
- **PCPE-CRD6002** - IBR600C Wi-Fi router with 5-year NetCloud Essentials support
- **PCPE-CRD6003** - IBR600C Wi-Fi router with 3-year NetCloud Essentials Prime support
- **PCPE-CRD6004** - IBR600C Wi-Fi router with 5-year NetCloud Essentials Prime support
- **PCPE-CRD6005** - Cradlepoint 9 wire GPIO cable. Adds 4 GPIO, 2nd ignition sense, redundant power

Wireless USB Adaptor

Part No: PCPE-ZYWAN30



SECURITY & PROTECTION SOLUTIONS

LCD Screen Cleaning Cloth

Part No: CF-VNC001W

MOQ: 10 pcs



Protective 14" LCD Film

Replacement for protective film pre-installed on TOUGHBOOK 55 Touch Screen Model

Part No: CF-VPF29U



Kensington Lock

Part No: PCPE-KENLOK1



All technical specifications are subject to change without notice.

OTHER PERIPHERALS

Slimline External CD/DVD Writer

Part No: PCPE-FCDVR05



Slimline External Blu- Ray Writer

Part No: PCPE-FCDVR06



Rugged Bluetooth Barcode Scanner

IP 54 rating. Grey.

Part Nos:

- PCPE-SMSD730 - 1D barcode Scanner
- PCPE-SMSD750 - 1D & 2D barcode scanner



All technical specifications are subject to change without notice.



MOBILE PRINT / SCAN SOLUTIONS



MW Series A7 Lightweight Printers

The extremely small and lightweight MW printers are easy-to-operate mobile printing solutions for printing A7 documents. Works with a range of printing materials, including a 2-ply carbon copy paper, ideal for receipt and ticket printing.

Part Nos.: PCPE-BRP145B MW-145BT A7 Mobile Printer (USB & Bluetooth)



PJ7 Series A4 Mobile Printers

Perfectly dimensioned for your briefcase or computer bag, PJ7 series of compact, direct thermal printers can also be easily mounted in your vehicle. Take it out on the road and make sure your clients and customers receive those all-important documents in an instant. Available with 300 dpi print resolution, and with USB, Bluetooth or Wi-Fi.

Part Nos.:

- PCPE-BRPJ762 PJ762 A4 mobile printer, 200dpi with USB & Bluetooth
- PCPE-BRPJ763 PJ763 A4 mobile printer, 300dpi with USB & Bluetooth

RJ Series Rugged Mobile Printers

The RJ "Rugged Jet" series portable printers are ideal on-person devices for mobile workers needing to print labels and receipts on the go.

RJ2000 Series



- PCPE-BRP2030 RJ2030 2" ticket/receipt printer (USB & Bluetooth)
- PCPE-BRP2050 RJ2050 2" ticket/receipt printer (USB, Bluetooth & Wi-Fi)
- PCPE-BRP2140 RJ2140 2" ticket and label printer (USB & Wi-Fi)
- PCPE-BRP2150 RJ2150 2" ticket and label printer (USB, Bluetooth & Wi-Fi)

RJ3000 series



- PCPE-BRP3050 RJ3050 3" Mobile Receipt Printer (USB, serial, Bluetooth & Wi-Fi)
- PCPE-BRP3150 RJ3150 3" Mobile Receipt & Label Printer (USB, serial, Bluetooth & Wi-Fi)

RJ4000 series



- PCPE-BRPRJ30 RJ4030 4" Mobile Printer (USB, serial & Bluetooth)
- PCPE-BRPRJ40 RJ4040 4" Mobile Printer (USB, serial & Wi-Fi)

All technical specifications are subject to change without notice.

PROFESSIONAL SERVICES

Custom BIOS Services

Part Nos:

- PCPE-PSBIO5G

SIM Installation

Part No: PCPE-PSSIMIN

Information Management Bundle

IMEI, MAC, SIM, ASSET, Hardware Hash reporting.

Part No: PCPE-PSATAGB

Customer Branding

Logo badge on device casing or bezel.

Part Nos: PCPE-PSLOGOB

Bespoke Training Material

Part No: PCPE-PSBTM01

Price on Request.

Custom Imaging

Part Nos:

- PCPE-PSIMSP1 – Image Support / Creation (per day)
- PCPE-PSIMSP2 – On Site Image Support / Creation (per day)

Asset Tagging

Standard, using CPE label set.

Part No: PCPE-PSATAG1

Customised Deployment / Logistics

Part No: PCPE-PSCDL01

Price on Request.

Solution Packaging

Up to 10 items packaged together in a box.

Does not include custom designed case.

Part No: PCPE-PSSPACK

Autopilot Enrolment

Part No: PCPE-PSAUTOP

All technical specifications are subject to change without notice.



LIFECYCLE SUPPORT SOLUTIONS



Extended Warranty (5 years)

Panasonic's Extended Warranty provides an additional two years of warranty, helping you to minimise repair costs and maximise the life cycle of your TOUGHBOOK or Toughpad.

Part No.: CF-LESPEW* *4 / 5

Accidental Damage (3 or 5 years)

Panasonic's Accidental Damage Warranty provides protection against any eventuality out in the field for up to 5 years, providing you and your workforce with complete peace of mind.

Part No.: CF-LESPAD* *3 / 4 / 5 (4 & 5 year options include Extended Warranty)

Hard Drive Warranty (3, 4 or 5 years)

Panasonic's Hard Drive Warranty allows you to keep your original hard drive in the event of a replacement being required, or in the event that your device needs to be sent for repair, ensuring the security of your sensitive data.

Part No.: CF-LESPHDEW* *3 / 4 / 5

Docking Station Warranties (3, 4, or 5 years)

Extended Warranty:

CF-LESPPD*	*3 / 4 / 5	Panasonic Dock – 3, 4 or 5 years Extended Warranty
CF-LESPND*	*3 / 4 / 5	3rd Party Dock – 3, 4 or 5 years Extended Warranty

Accidental Damage:

CDS-LESPAD*	*3 / 4 / 5	Panasonic Dock – 3, 4 or 5 years Accidental Damage Warranty
CDS-LESPTAD*	*3 / 4 / 5	3rd Party Dock – 3, 4 or 5 years Accidental Damage Warranty

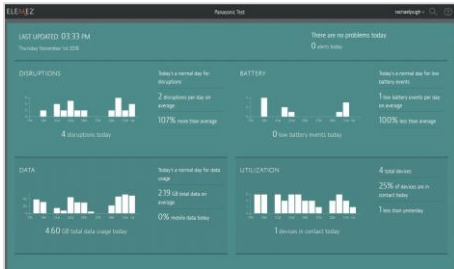
Smart Battery Warranty (3 years only)

Smart Battery Monitor software, powered by B2M Solutions, monitors device battery health in real-time. Smart Battery Monitor will alert you when batteries deployed in the field reach low capacity during normal use, so a replacement battery can be sent out in advance. Available at point of sale of device only.

Part No.: CF-LESPBASS3

All technical specifications are subject to change without notice.

TOUGHBOOK Smart Service

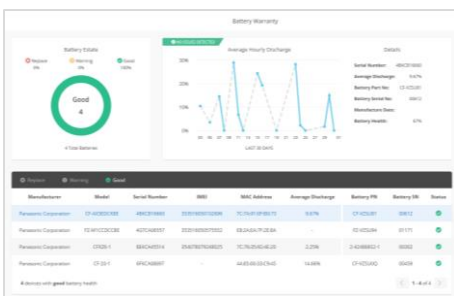


Real time analytics, powered by B2M Solutions, showing the health and performance of your estate of mobile devices, focussing on areas such as battery life, data usage, disruptions and connectivity. Enables the user to recognise patterns of usage and potentially pre-empt issues before they arise.

Part Nos.:

- **CF-LESPSSM3** 3 year Smart Service self-managed licence
- **CF-LESPSSM5** 5 year Smart Service self-managed licence

Smart Battery Monitor

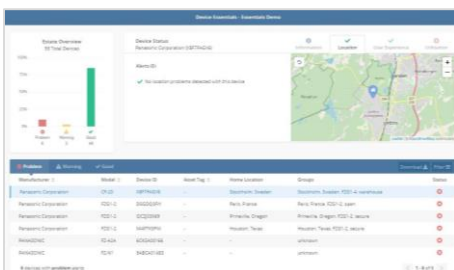


An additional “Smart” module that monitors battery usage and health in detail, focusing on battery serial numbers, the software allows the customer to track, identify and replace batteries before they impact productivity. With dashboard access and alerts.

Part Nos:

- **CF-LESPBAEE1** 1 year Smart Battery Monitor software licence
- **CF-LESPBAEE3** 3 year Smart Battery Monitor software licence
- **CF-LESPBAEE5** 5 year Smart Battery Monitor software licence

Smart Device Monitor



An additional “Smart” module that monitors device usage in more detail. Dashboard access provides information such as device location; user experience, including drop detection on Android devices and also enables alerts and geofences to be set up.

Part Nos:

- **CF-LESPDAEE1** 1 year Smart Device Monitor software licence
- **CF-LESPDAEE3** 3 year Smart Device Monitor software licence
- **CF-LESPDAEE5** 5 year Smart Device Monitor software licence

All technical specifications are subject to change without notice.

SOFTWARE SOLUTIONS – PREMIER PARTNERS



Absolute Data and Device Security

Patented technology to centrally secure TOUGHBOOK devices for unrivalled endpoint security and data risk management.

Part Nos:

- | | | |
|--------------------------|---------------------|----------------|
| • PCPE-ABSVIS* 1/2/3/4/6 | Absolute Visibility | 1/2/3/4/5 yrs. |
| • PCPE-ABSDPR* 1/2/3/4/6 | Absolute Control | 1/2/3/4/5 yrs. |
| • PCPE-ABSDPM* 1/2/3/4/6 | Absolute Resilience | 1/2/3/4/5 yrs. |

Website: <https://www.absolute.com/partners/oem/panasonic/>



NetMotion Mobility

More than just a VPN, "Mobility" Mobile Performance Management software can dynamically maintain access to applications through changing network conditions, allowing mobile workers to remain productive anywhere their work takes them. Diagnostics option also available.

Part Nos:

- PCPE-NLW 1/3/5*** Mobility and Diagnostics (plus 1, 3 or 5 years maintenance/support)
- PCPE-NMW 1/3/5*** Mobility only (plus 1, 3 or 5 years maintenance/support)

Website: <https://www.netmotionsoftware.com/products/mobility>



SOTI MobiControl

MobiControl is an Enterprise Mobility Management (EMM) solution with enhanced EMM features like application management, content management, location services and remote help.

Part Nos:

- PCPE-SOTCL** 1/2/3/5 U/E Cloud license & hosting (1, 2, 3 or 5 yrs. / UK or EU)

Website: <https://www.soti.net/products/soti-mobicontrol/>



Sygic

Sygic Professional GPS Navigation works offline and features truck specific routing, itinerary with time windows and over 60 APIs for development with Android and Windows based apps.

Part numbers available upon request.

Website: <https://www.sygic.com/enterprise/professional-gps-navigation-sdk>

For more info on these software solutions, please refer to the co-branded data sheet [here](#).

SOFTWARE SOLUTIONS – CERTIFIED PARTNERS



StayLinked

StayLinked's SmartTE software provides a cost-effective way to take advantage of touchscreen devices with Terminal Emulation by transforming traditional "green screen" application screens into easy-to-use, graphical screens with no changes to the underlying enterprise applications.

For more information or to request a demo visit:
<https://www.staylinked.com/panasonic>



Loqus

Loqus Fleet Ltd specialises in the provision of end-to-end Transport management systems providing organisations with the necessary tools to help them Plan, Execute and Monitor & Control work orders from initial order taking down to the last mile. Headquartered in Malta, the group employs a passionate team of high calibre software engineers supported by an experienced management team

Visit website: <http://openfleet.loqusgroup.com/>



Acronis

Acronis sets the standard for cyber protection and hybrid cloud storage through its innovative backup, anti-ransomware, disaster recovery, storage, and enterprise file sync and share solutions. Enhanced by its award-winning AI-based active protection technology, blockchain-based authentication and unique hybrid-cloud architecture, Acronis protects all data in any environment – including physical, virtual, cloud, mobile workloads and applications – all at a low and predictable cost.

Visit website: <https://www.acronis.com>



GPC Systems

GPC is an award-winning software house with over 25 years of experience working with a range of sectors across the globe. Driven by the needs of their customers in healthcare, transportation, police, logistics and local government, GPC strives to improve outcomes through the most efficient use of resources. GPC has in-depth experience creating solutions utilising 3D cameras, including the Intel® RealSense™ technology integrated into the TOUGHBOOK M1.

Visit website: <https://www.gpcsl.com/>

All technical specifications are subject to change without notice.

ACCESSORY SUMMARY

Solution Type	Part Number	Description
Universal Bay Options	FZ-VSD55121U	256 GB 2 nd SSD
	FZ-VSD55151U	512 GB 2 nd SSD
	FZ-VSD551T1U	1 TB 2 nd SSD
	FZ-VSD55122U	OPAL 256 GB 2 nd SSD
	FZ-VSD55152U	OPAL 512 GB 2 nd SSD
	FZ-VSD551T2U	OPAL 1TB 2 nd SSD
	FZ-VDM551U	DVD Multi Drive
	FZ-VGT551U	Discrete GPU
	FZ-VBD551U	Blu-ray Disc Drive
	FZ-VSC552U	Smart Card Reader
Front Expansion Slot Options	FZ-VSC551U	Smart Card Reader
	FZ-VNF551U	Contactless Smart Card Reader
	FZ-VFP551U	Finger Print Reader
RAM Modules	FZ-VZSU1HU	Battery Pack
	FZ-BAZ1908	8GB RAM
RAM Modules	FZ-BAZ1916	16 GB RAM
	Docking Solutions	FZ-VEB551U
PCPE-GJ54V01/2/3		TOUGHBOOK 54/55 Vehicle Dock (Gamber-Johnson)
PCPE-HAV5401/2/3		TOUGHBOOK 54/55 Vehicle Dock (Havis)
Bags and Carry Cases	TBC	TOUGHBOOK 55 Always On Case
	PCPE-INFSTH1	TOUGHBOOK 54/55 Mobility Kit
	PCPE-INFUVA1	User Harness
	PCPE-INFCOM2	ComUniversal Bag
	PCPE-WENSYN1	Synergy 15.6" Backpack
	PCPE-CCI7652	Legacy 16" Double Laptop Case
Power Management	FZ-VZSU1HU	Replacement Main Battery (6Cell, 68 Wh)
	FZ-VCB551* E/G/T	4-bay Battery Charger
	CF-AA5713A2*	AC Adaptor (*E: UK; G: Continental; T: Italian ; D: Swiss
	CF-LND1224A	Auto Adaptor (120W)
	PCPE-LND3676	MIL SPEC Auto Adaptor (120W)
Productivity	FZ-VNP551U	TOUGHBOOK 55 Touch Screen Stylus Pen
	FZ-VNT005U	Stylus Tether
	PCPE-INFUVA2	Toughmate Stylus tether
	PCPE-LOGM901	USB Optical Mouse
Connectivity	PCPE-CRD96B1/3/5	IBR900-600M router with cloud management bundle (1, 3 or 5 year)
	PCPE-CRD96F1/3/5	IBR900-600M router with cloud management bundle and vehicle antenna (1, 3 or 5 year)
	PCPE-CRD6001/2	IBR600C Wi-Fi router with NetCloud Essentials support (3 or 5 year)
	PCPE-CRD6003/4	IBR600C Wi-Fi router with NetCloud Essentials Prime support (3 or 5 year)
	PCPE-LANCAB1	LAN Port Saver Cable
	PCPE-ZYWAN30	Wireless USB adaptor

All technical specifications are subject to change without notice.



ACCESSORY SUMMARY

Solution Type	Part Number	Description
Security, Protection & Cleaning	PCPE-KENLOK1	Kensington Lock
	CF-VPF29U	Protective Film for 14" LCD
	CF-VNC001W	LCD Cleaning Cloth (MOQ: 10pcs)
Peripherals	PCPE-FCDVR05	USB External CD-DVD Drive
	PCPE-FCDVR06	USB External Blu-Ray Drive
	PCPE-SMSD730	1D Barcode Scanner (grey)
	PCPE-SMSD750	2D Barcode Scanner (grey)
Printers and Scanners	PCPE-BRPJ722	PJ722 A4 mobile printer, 200 dpi with USB
	PCPE-BRPJ723	PJ723 A4 mobile printer, 300 dpi with USB
	PCPE-BRPJ762	PJ762 A4 mobile printer, 200dpi with USB & Bluetooth
	PCPE-BRPJ763	PJ763 A4 mobile printer, 300 dpi with USB & Bluetooth
	PCPE-BRPJ773	PJ773 A4 mobile printer, 300 dpi with USB, Wi-Fi & AirPrint
	PCPE-BRP2030	RJ2030 2" ticket/receipt printer (USB & Bluetooth)
	PCPE-BRP2050	RJ2050 2" ticket/receipt printer (USB, Bluetooth & Wi-Fi)
	PCPE-BRP2140	RJ2140 2" ticket and label printer (USB & Wi-Fi)
	PCPE-BRP2150	RJ2150 2" ticket and label printer (USB, Bluetooth & Wi-Fi)
	PCPE-BRP3050	RJ3050 3" Mobile Receipt Printer (USB, serial, Bluetooth & Wi-Fi)
	PCPE-BRP3150	RJ3150 3" Mobile Receipt & Label Printer (USB, serial, Bluetooth & Wi-Fi)
	PCPE-BRPRJ30	RJ4030 4" Mobile Printer (USB, serial & Bluetooth)
	PCPE-BRPRJ40	RJ4040 4" Mobile Printer (USB, serial & Wi-Fi)
Professional Services	PCPE-PSBIOSG	Custom BIOS Service
	PCPE-PSIMSP1	Image Support / Creation (per day)
	PCPE-PSIMSP2	On Site Image Support / Creation (per day)
	PCPE-PSSIMIN	SIM Installation
	PCPE-PSATAG1	Asset Tagging
	PCPE-PSATAGB	Information Management Bundle
	PCPE-PSAUTOP	Autopilot Enrolment
	PCPE-PSLOGOB	Logo badge
	PCPE-PSSPACK	Solution Packaging
	PCPE-PSCDL01	Customised Deployment / Logistics
	PCPE-PSBTM01	Bespoke Training Material
PCPE-PSHDDD1	HDD / SSD Duplication	

All technical specifications are subject to change without notice.

ACCESSORY SUMMARY

Solution Type	Part Number	Description
Lifecycle Support Solutions	CF-LESPEW5	Extended Warranty
	CF-LESPAD* 3/5	Accidental Damage Warranty (3 or 5 years)
	CF-LESPHDEW *3/4/5	Hard Drive Warranty
	CF-LESPPD* 3/4/5/	Panasonic Dock Extended Warranty – 3, 4 or 5 years
	CF-LESPND* 3/4/5/	Third Party Dock Extended Warranty – 3, 4 or 5 years
	CDS-LESPAD* 3/4/5	Panasonic Dock Accidental Damage Warranty - 3, 4 or 5 yrs
	CDS-LESPTAD* 3/4/5	3rd Party Dock Accidental Damage Warranty - 3, 4 or 5 yrs
	CF-LESPBASS3	Smart Battery Warranty – 3 years only
Smart Services	CF-LESPSSSM3/5	Smart Service self managed licence – 3 or 5 years
	CF-LESPBAEE1/3/5	Smart Battery Monitor software licence – 1, 3 or 5 years
	CF-LESPDAEE1/3/5	Smart Device Monitor software licence – 1, 3 or 5 years
Software Solutions	PCPE-ABSDPM* 1/2/3/4/6	Absolute Resilience
	PCPE-ABSDPR* 1/2/3/4/6	Absolute Control
	PCPE-NMW 1/3/5*** PCPE-NLW 1/3/5***	NetMotion Mobility & Diagnostics software and support
	PCPE-SOTMC 1/2/3/5 U/E	Subscription & Maintenance (1, 2, 3 or 5 yrs; U: UK/E: EU)
	PCPE-SOTCL 1/2/3/5 U/E	Cloud License & hosting (1, 2, 3 or 5 yrs; U: UK/E: EU)

Panasonic and TOUGHBOOK are brand names and registered trademarks of Panasonic Corporation. Intel, the Intel logo, Intel Core, Intel vPro, Core Inside and vPro Inside are trademarks of Intel Corporation in the U.S. and other countries. Microsoft® and Windows® are registered trademarks of Microsoft® Corporation of the United States and/or other countries. All other brand names shown are the registered trademarks of the relevant companies. All rights reserved.

Mobile Solutions Business Division Europe, a division of Panasonic Marketing Europe GmbH Panasonic Marketing Europe GmbH is a company registered in Germany at Hagenauer Strasse 43, 65203 Wiesbaden, Germany. Registered in AG Wiesbaden HRB 13178