

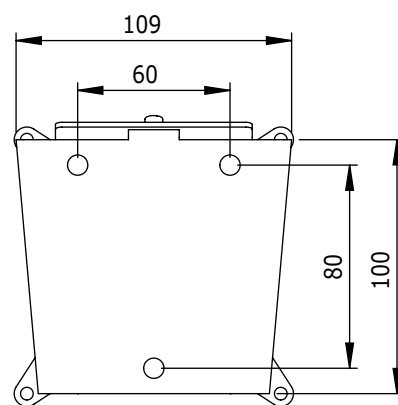
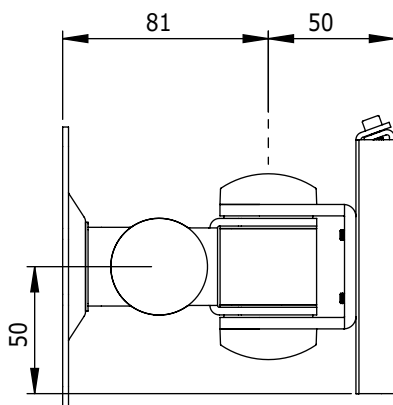
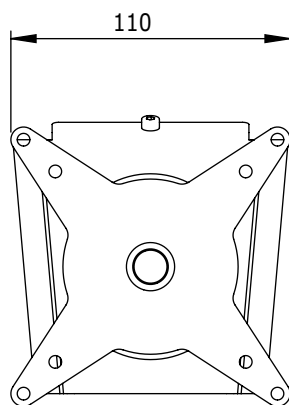
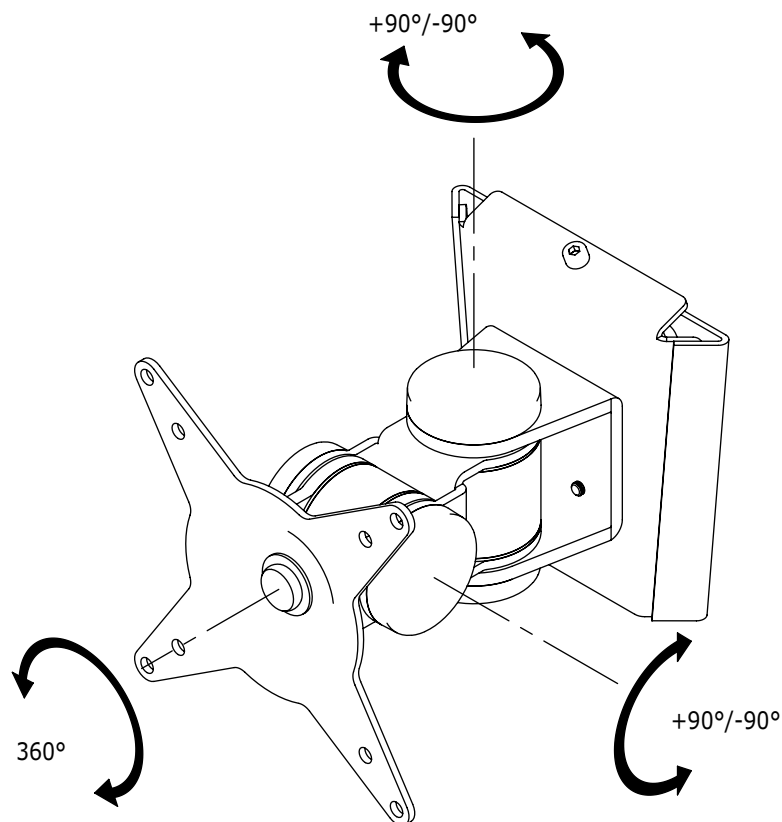
52.032

ViewMate Style Wall Mount 032

This short monitor arm is made of sturdy joints connected to a VESA mounting plate that holds monitors up to 15kg. Swivels left and right, tilts up and down and rotates 360 degrees. Ideally suitable as a centre monitor holder in a triple or quad parabolic monitor setup.

- Multi-pivot arm
- Mounts a single monitor to a wall
- Comes with tapered wall mounting plate for easy installation
- Comes with all necessary fasteners
- Max. weight capacity of 15kg/monitor (up to 24"/24"W)
- Rotate 360°, tilt +90°/-90°, swivel +90°/-90°
- Compatible with VESA patterns 75x75/100x100mm MIS-D
- 131mm clearance between monitor and wall





DFX.# 52.032

silver



805410520328



24"W/61cm



15kg



0mm



180°



180°



360°



75/100mm

Dealer