

Evolut D Wireless

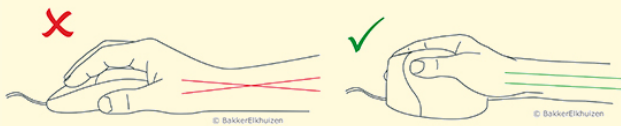
The latest wireless version



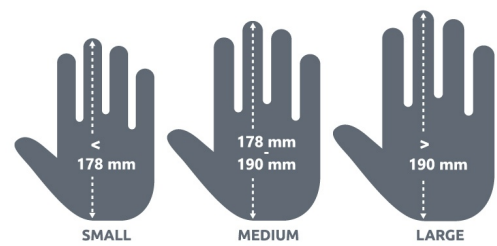
This is the latest wireless vertical mouse. Its design was inspired by more than 18 years of experience and research.

Because the mouse is held in a handshake position, it reduces and prevents (physical) discomfort. The user's wrist bends less from side to side and the lower arm rotates less.

The "handshake" position of this vertical mouse ensures that your wrist bends less from side to side, which means your lower arm rotates inwards less (Schmid et al., 2015). As a result, there is less muscle activity in the lower arm than when using a standard mouse (Quemelo & Vieira, 2013).



Research shows that using a vertical mouse allows users to heal quicker from arm, wrist and hand injuries (Aarås et al., 2001).

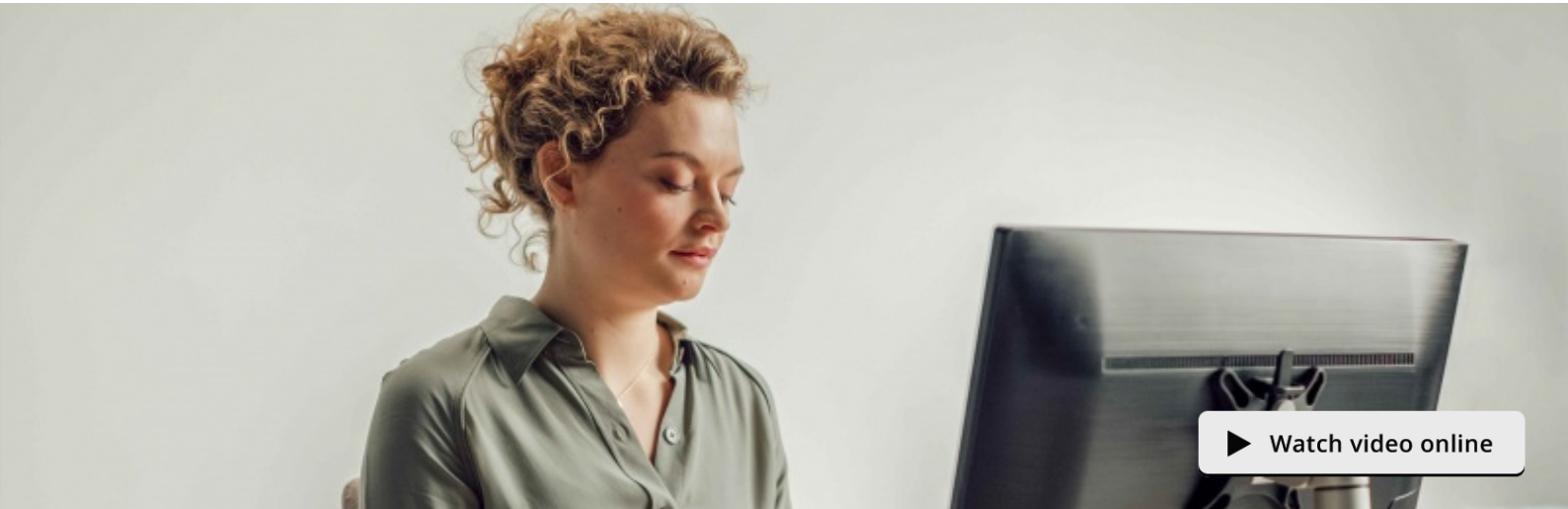


The latest wireless version of Evolut at BakkerElkhuizen

The Evolut D is made from high-quality materials to create a premium look and feel. Furthermore, this mouse has a very short acclimatisation time. The Evolut D Wireless is available in two versions, so there is a perfect model for almost all hand sizes. The mouse is only suitable for right-handed users. You use your mouse a lot throughout the day. When using a traditional mouse, you twist your wrists, tense your arms and strain your shoulders. To avoid this, different types of ergonomic mice are available. A vertical mouse is one where the hand is held in a handshake posture.



[Watch product online](#)



▶ Watch video online

Advantages of the Evoluent D Wireless



Ergonomic

With the unique indentation on the buttons, the user's hand and fingers are positioned in a neutral posture.

Design

This mouse has a premium look and feel due to the high-quality materials that were used, its modern design and the chrome housing.

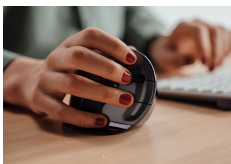
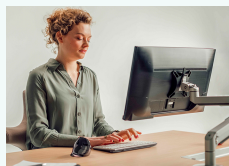


Grip

Compared to some earlier versions, the design of this mouse is less spherical. On top of that, the mouse features unique textures to create a comfortable grip.

Wireless

The wireless receiver has a range of at least ten metres. Furthermore, the mouse's battery has a lifespan of three months.



Driver

No driver is needed for the mouse's standard functionalities (plug and play). Installing the driver will make the mouse's buttons fully programmable.

Usability

With five buttons and a clickable scroll wheel, users can work with optimal efficiency. Furthermore, the DPI button and hidden LED indicators make it easy to switch between preferred settings.



Knowledge Center

Computer mice are still the most-used accessory on people's desks. Since different people need different types of mice, we present a practical overview below.

In many cases, the first thing that comes to mind when discussing ergonomics for computer users is the mouse we use. This makes...

[Read more online](#)

Specs

Width	3.39 "
Height	3.07 "
Depth	4.33 "
Weight	0.37 lb
Product code:	BNEEVRDW (More versions)

Contact

 BAKKER ELKHUIZEN

Bechtle Logistic & Service GmbH
 Bechtle Platz 1
 74172 Neckarsulm
 tel. +49 7132 981 30
 fax. +49 7132 981 38 00
 email. logistik@bechtle.com
 website. www.bechtle.com

Official partner

 BAKKER ELKHUIZEN