

PRECISION

3480

Small, light 14" workstation  
designed for Power Users.



# 3480

Work anywhere with a small, yet powerful workstation.

The lightest of the 3000 Series, the 3480 is a 14-inch ultra-mobile workstation that is great for multi-tasking across collaboration, business, and office applications.

**Manual Privacy Shutter, Express Sign-in 2.0**

Up to FHD IR camera with AI-based proximity sensors, Express Sign-in 2.0, intelligent noise cancellation and a manual privacy shutter.

Advanced thermal management, with Dual Opposing Output (DOO) fan and User Selectable Thermal Tables

Starting weight is 3.06lbs/ 1.39kg

Up to FHD, 100% sRGB, 400nits, PremierColor. Touch and ComfortView Plus optional. Low-blue-light (LBL) and super low power (SLP).

Optional Finger Reader, integrated with power button Windows Hello capable

Pro2 ID keyboard with backlit optional

Titan Gray

Large glass-like, multi-touch clickpad

Up to 3-cell 54Whr battery, Long Life Cycle, ExpressCharge

4G LTE, 5G FirstNet Certified WiFi 6E, 4G LTE, 5G LTE with FirstNet Certification, Bluetooth 5.3

**Intelligent performance**

Latest professional grade components with Intel Core U i5-i7 (15W) or Core P i5-i7 (28W), 10-14 cores with vPro options, NVIDIA RTX A500 (4GB) graphics, Gen4 M.2 SSD (up to 2TB), up to 64GB of 4800MHz DDR5 memory (no ECC options)

**Wide variety of ports and input connections:**

(2) Thunderbolt 4 Type C, (2) USB-A 3.2 Gen 1 (1x power enabled), HDMI 2.0, RJ-45, Headset, Smart Card (optional), Fingerprint reader (optional).

ExpressCharge charges 80% in 1 hour+, charging 35% in 20 min++

# 3480



## Mission critical reliability and Security

### Independent Software Vendor (ISV) Certified

This provides peace of mind knowing that Dell works with many independent software vendors (ISVs) to provide an exceptional, seamless user experience. To Dell, it means hundreds of engineering man-hours and rigorous testing that have been poured into Dell Precision™ workstations to optimize performance and reliability with leading industry applications.

For a full list of ISV certifications, click here <http://precisionworkstations.com/software-certification-lookup>

...

Tested to US military specifications to guarantee durability (MIL-STD tested)

...

FIPS certified fingerprint and smartcard readers (optional)

...

Intelligent privacy and enhanced contextual privacy through camera



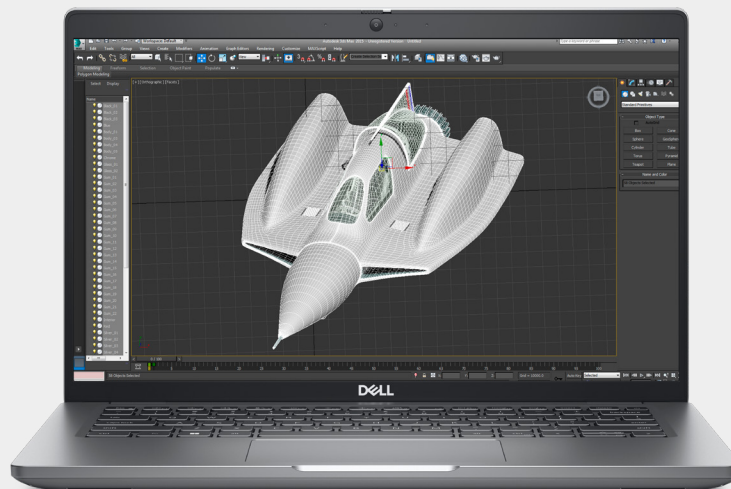
## Advanced productivity

Exceptional battery life helps keep you productive, while ExpressCharge and ExpressCharge Boost gets you recharged quickly.

...

### 4G LTE and 5G WWAN FirstNet Certified

WiFi 6E, 4G LTE, 5G LTE with FirstNet Certification, Bluetooth 5.3 for flexible connectivity options.



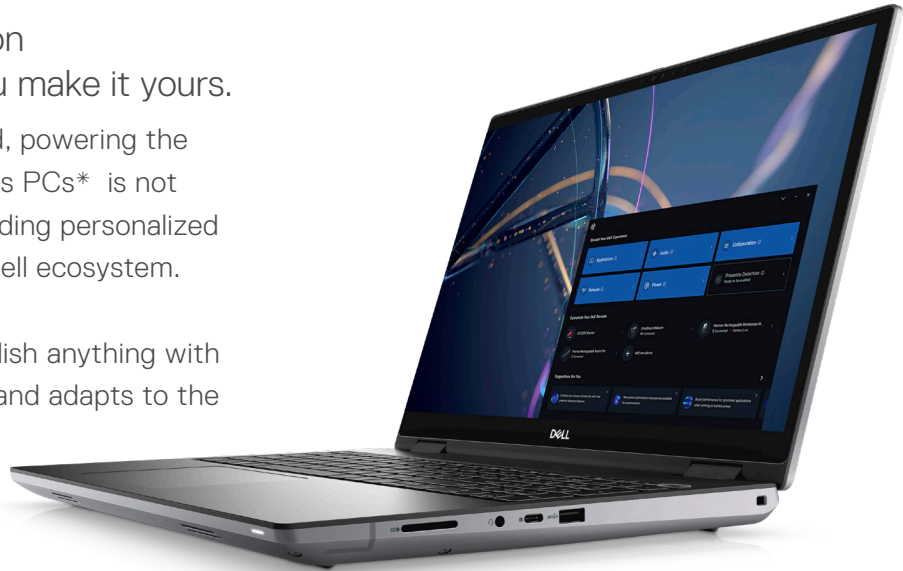
# PRECISION 3480

Spec Sheet

Dell Optimizer for Precision  
We make it intelligent. You make it yours.

In a work-from-anywhere world, powering the world's most intelligent business PCs\* is not enough, Dell Optimizer is extending personalized intelligence to the rest of the Dell ecosystem.

Dell Optimizer lets you accomplish anything with built-in intelligence that learns and adapts to the way you work.



Power your productivity with personalized performance extending from your Precision to the devices within your workspace.



#### An intelligent ecosystem

Enjoy easy pairing and management of your Dell monitors and accessories with the **integration of Dell Display Manager and Dell Peripheral Manager.**



#### Intelligent analytics

Get full workload analysis to enable users to track system resource utilization for components such as processor, memory, graphics, and hard drive while you run your specific workload.



#### Improved app performance

**ExpressResponse** analyzes how you use your preferred apps to boost performance.



#### Intelligent privacy anywhere

This technology lets you texturizes your screen when an intruder is detected and dims your PC when you look away. It also wakes your PC when you approach and locks it when you walk away.



#### Unmatched connectivity

**ExpressConnect\*** provides the world's first simultaneous multinet network connection\* that joins the best network\* available.

With Dell Optimizer, optimization and data collection follow a stringent process to ensure your privacy and security.

[Click here to learn more about Dell Optimizer.](#)



#### Up level audio

**Intelligent Audio** delivers sound and mic enhancements reducing background noise using neural noise cancellation and voice isolation technology.

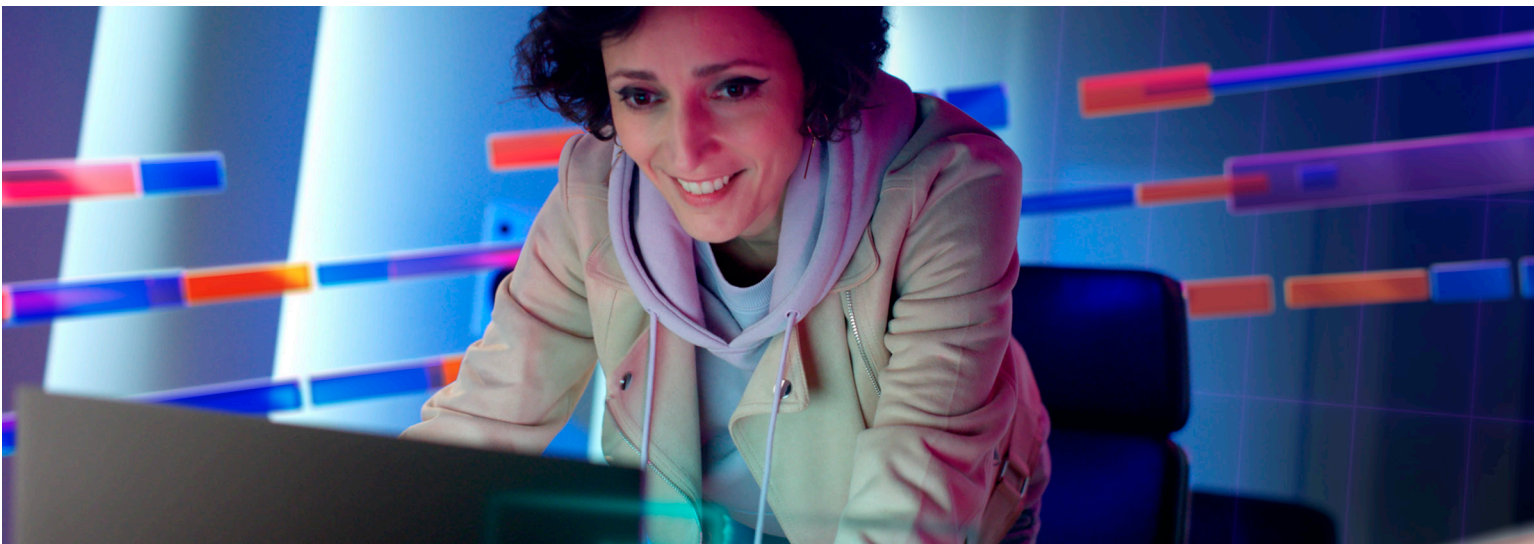


#### Extended power

**ExpressCharge** analyzes your power usage habits to improve PC battery utilization and extends run times by charging your system faster when you need a boost in power.

\* Based on Dell Analysis, October 2022. For more details visit Guide to Bluetooth Security <https://nvlpubs.nist.gov/nistpubs/SpecialPublications/NIST.SP.800-121r2-upd1.pdf> Dell Pair is available on select Dell accessories.

Dell Optimizer features vary per PC model and platform. Please refer to the [Availability Matrix](#) for more details.



## MOBILE WORKSTATION SOLUTION



**UltraSharp 34 Curved Monitor  
USB-C Hub - U3423WE**

Experience immersive brilliant color, remarkable details and spectacular contrast on the world's first 34" curved WQHD monitor with IPS Black panel technology. Enhance productivity and multitasking with RJ45, USB-C and super speed 10Gbps connectivity.



**Dell Thunderbolt™ 4 Dock  
- WD22TB4**

Experience lightning fast charging and Thunderbolt™ 4 connectivity with this flexible and powerful modular dock.



**Dell Pro Wireless Keyboard  
and Mouse - KM5221W**

Enhance your everyday productivity with a quiet full-size keyboard and mouse combo that offers programmable shortcuts and 36 months battery life.<sup>38</sup>



**Dell EcoLoop Pro Briefcase  
- CP5623**

Designed for on-the-go productivity and protection, the Dell EcoLoop Pro Briefcase is made of eco-conscious material to complement any lifestyle.



**Dell Pro Wireless Headset  
- WL5022**

Work from anywhere with this Bluetooth Teams certified headset that lets you switch seamlessly to your PC or smartphone and enjoy crystal clear audio on the go.



**Dell Pro Webcam - WB5023**

Professional 2K QHD webcam with outstanding video quality and picture clarity, certified for Microsoft Teams and Zoom.

# PRECISION 3480

## FEATURE TECHNICAL SPECIFICATION

<b>MODEL NUMBER<sup>1</sup></b>	Precision 3480
<b>PROCESSOR<sup>1</sup></b>	13 <sup>th</sup> Generation Intel® Core™ i5-1335U, Intel® vPro® Essentials, 12 MB cache, 10 cores, up to 4.6 GHz 13 <sup>th</sup> Generation Intel® Core™ i7-1355U, Intel® vPro® Essentials, 12 MB cache, 10 cores, up to 5.0 GHz 13 <sup>th</sup> Generation Intel® Core™ i5-1340P, Intel® vPro® Essentials, 12 MB cache, 12 cores, up to 4.6 GHz 13 <sup>th</sup> Generation Intel® Core™ i5-1350P Intel® vPro® Enterprise, 12 MB cache, 12 cores, up to 4.7 GHz 13 <sup>th</sup> Generation Intel® Core™ i7-1360P, 18 MB cache, 12 cores, up to 5.0 GHz 13 <sup>th</sup> Generation Intel® Core™ i7-1370P Intel® vPro® Enterprise, 24 MB cache, 14 cores, up to 5.2 GHz
<b>OPERATING SYSTEM<sup>1</sup></b>	Windows 11 Home, 64-bit, Windows 10 downgrade capable Windows 11 Pro, 64-bit Windows 10 China G-SKU, 64-bit Ubuntu® 22.04 LTS, 64-bit
<b>MEMORY<sup>1,2,3</sup></b>	8 GB, 1 x 8 GB, DDR4, 3200 MHz, single-channel 16 GB, 2 x 8 GB, DDR4, 3200 MHz, dual-channel 16 GB, 1 x 16 GB, DDR4, 3200 MHz, single-channel 32 GB, 2 x 16 GB, DDR4, 3200 MHz, dual-channel 64 GB, 2 x 32 GB, DDR4, 3200 MHz, dual-channel 8 GB, 1 x 8 GB, DDR5, 4800 MHz, single-channel 16 GB, 2 x 8 GB, DDR5, 4800 MHz, dual-channel 16 GB, 1 x 16 GB, DDR5, 4800 MHz, single-channel 32 GB, 2 x 16 GB, DDR5, 4800 MHz, dual-channel 64 GB, 2 x 32 GB, DDR5, 4800 MHz, dual-channel
<b>PRIMARY HARD DISK DRIVE<sup>1,5</sup></b>	M.2 2230, 256 GB, PCIe NVMe Gen4 x4, SSD, Class 35 M.2 2230, 512 GB, PCIe NVMe Gen4 x4, SSD, Class 35 M.2 2230, 1 TB, PCIe NVMe Gen4 x4, SSD, Class 35 M.2 2230, 2 TB, PCIe NVMe Gen4 x4, SSD, Class 35 M.2 2230, 256 GB, PCIe NVMe Gen4 x4, SED, Class 35
<b>VIDEO CARD</b>	Intel® Iris® Xe Graphics with dual-channel memory configuration NVIDIA® RTX A500, 4 GB GDDR6
<b>DISPLAY</b>	14-inch, FHD 1920 x 1080, 60 Hz, anti-glare, non-touch, 45% NTSC, 250 nits, IPS 14-inch, FHD 1920 x 1080, 60 Hz, anti-glare, touch, 72% NTSC, 300 nits, IPS 14-inch, FHD 1920 x 1080, 60 Hz, anti-glare, non-touch, 100% sRGB, 400 nits, IPS, Low Blue Light, Super Low Power
<b>CASE COLOR</b>	Titan Gray
<b>PRODUCTIVITY SW<sup>1</sup></b>	Dell Command   Update (DCU) Dell Digital Deliver - Cirrus Client Excalibur Dell Optimizer MS Office MS Office - single language MS Office Home Business Non-Premium (Japan) MS Office Personal Non-Premium (Japan) MS Office Pro Non-Premium (Japan) Support Assist
<b>SECURITY SW</b>	McAfee Generic Build 30-day Commercial McAfee Generic Build 30-day Commercial JPN
<b>WARRANTY</b>	1-year hardware warranty with on-site/in-home service after remote diagnosis 2-year hardware warranty with on-site/in-home service after remote diagnosis 3-year hardware warranty with on-site/in-home service after remote diagnosis 4-year hardware warranty with on-site/in-home service after remote diagnosis 5-year hardware warranty with on-site/in-home service after remote diagnosis 1-year ProSupport Suite 2-year ProSupport Suite 3-year ProSupport Suite 4-year ProSupport Suite 5-year ProSupport Suite 2-year Data and Protective Services Extended Battery Services (EBS) - FRU Batteries Only 3-year Data and Protective Services Extended Battery Services (EBS) - FRU Batteries Only
<b>ACCIDENTAL DAMAGE SERVICES</b>	1-year Accidental Damage Service 2-year Accidental Damage Service 3-year Accidental Damage Service 4-year Accidental Damage Service 5-year Accidental Damage Service 1-year Accidental Damage Service with Theft Service 2-year Accidental Damage Service with Theft Service 3-year Accidental Damage Service with Theft Service 4-year Accidental Damage Service with Theft Service 5-year Accidental Damage Service with Theft Service 1-year Accidental Damage Protection 2-year Accidental Damage Protection 3-year Accidental Damage Protection 4-year Accidental Damage Protection 5-year Accidental Damage Protection
<b>KEYBOARD<sup>1</sup></b>	English US, Standard, non-backlit keyboard, 79 keys Brazilian, Standard, non-backlit keyboard, 80 keys Spanish, Standard, non-backlit keyboard, 80 keys Arabic, Standard, backlit keyboard, 79 keys Canada bilingual (MUI), Standard, backlit keyboard, 79 keys Chinese traditional, Standard, backlit keyboard, 79 keys English US, Standard, backlit keyboard, 79 keys French-Canadian, Standard, backlit keyboard, 79 keys Greek, Standard, backlit keyboard, 79 keys

# PRECISION 3480

## FEATURE TECHNICAL SPECIFICATION

Hebrew, Standard, backlit keyboard, 79 keys  
Korean, Standard, backlit keyboard, 79 keys  
Russian, Standard, backlit keyboard, 79 keys  
Thai, Standard, backlit keyboard, 79 keys  
Ukrainian, Standard, backlit keyboard, 79 keys  
Japanese, Standard, backlit keyboard, 83 keys  
Brazilian, Standard, backlit keyboard, 80 keys  
Belgian, Standard, backlit keyboard, 80 keys  
Bulgarian, Standard, backlit keyboard, 80 keys  
Czech & Slovakian (MUI), Standard, backlit keyboard, 80 keys  
Danish, Standard, backlit keyboard, 80 keys  
English UK, Standard, backlit keyboard, 80 keys  
Estonian, Standard, backlit keyboard, 80 keys  
French European, Standard, backlit keyboard, 80 keys  
German, Standard, backlit keyboard, 80 keys  
Hungarian, Standard, backlit keyboard, 80 keys  
Icelandic, Standard, backlit keyboard, 80 keys  
Italian, Standard, backlit keyboard, 80 keys  
Nordic (MUI), Standard, backlit keyboard, 80 keys  
Norwegian, Standard, backlit keyboard, 80 keys  
Portuguese Iberian, Standard, backlit keyboard, 80 keys  
Slovenian, Standard, backlit keyboard, 80 keys  
Spanish (Castilian), Standard, backlit keyboard, 80 keys  
Spanish (Latin America), Standard, backlit keyboard, 80 keys  
Swedish/Finnish, Standard, backlit keyboard, 80 keys  
Swiss European (MUI), Standard, backlit keyboard, 80 keys  
Turkish, Standard, backlit keyboard, 80 keys  
Turkish F, Standard, backlit keyboard, 80 keys  
English International, Standard, non-backlit keyboard, 79 keys  
English International, Standard, backlit keyboard, 79 keys  
Japanese, Standard, non-backlit keyboard, 83 keys  
French-Canadian Quebec, Standard, non-backlit keyboard, 80 keys

**PORTS** (2) Thunderbolt™ 4 ports with DisplayPort™ Alt Mode/USB Type-C/USB4/Power Delivery  
USB 3.2 Gen 1 port with PowerShare  
USB 3.2 Gen 1 port  
HDMI 2.0 port  
Universal audio port  
RJ45 Ethernet port

**SLOTS** Wedge shaped lock slot  
Smart card reader slot (optional)  
Nano-SIM card slot (optional)

**DIMENSIONS US**  
Height (rear): 0.83 in. (21.04 mm)  
Height (front): 0.75 in. (19.06 mm)  
Width: 12.65 in. (321.35 mm)  
Depth: 8.35 in. (212 mm)  
Starting weight: 3.06 lb (1.39 kg)

**Rest of the world**  
Height (rear): 21.04 mm (0.83 in.)  
Height (front): 19.06 mm (0.75 in.)  
Width: 321.35 mm (12.65 in.)  
Depth: 212 mm (8.35 in.)  
Starting weight: 1.39 kg (3.06 lb)

**CAMERA** 1080p at 30 fps, widescreen FHD RGB camera, Dual-array microphones  
1080p at 30 fps, widescreen FHD RGB + IR camera, Dual-array microphones  
1080p at 30 fps, widescreen FHD RGB + IR camera, Dual-array microphones, Ambient light sensor,  
Express Sign-In with Presence Detection and Intelligent Privacy

**AUDIO** Stereo speakers with Realtek Waves, MaxxAudio® 12.0, 2 W x 2 W = 4 W total

**WIRELESS WLAN:**  
Realtek RTL8852BE, 2x2 MIMO, 1201 Mbps, 2.4/5 GHz, Wi-Fi 6 (WiFi 802.11ax), Bluetooth 5.3  
Intel® AX211, 2x2 MIMO, 2400 Mbps, 2.4/5/6 GHz, Wi-Fi 6E (6 if 6E unavailable) (WiFi 802.11ax),  
Bluetooth 5.3

**WWAN:**  
4G Intel XMM 7560R Global LTE-Advanced Pro  
Intel 5000 Global 5G Modem, FirstNet Certified

**PRIMARY BATTERY** 3-cell, 42 Wh, ExpressCharge™ Boost  
3-cell, 42 Wh, Long Cycle Life, ExpressCharge™, 3-year warranty  
3-cell, 54 Wh, ExpressCharge™ Boost  
3-cell, 54 Wh, Long Cycle Life, ExpressCharge™, 3-year warranty

**POWER Integrated Graphics only:**  
65 W AC adapter, USB-C  
100 W AC adapter, USB-C  
130 W AC adapter, USB-C

**Discrete Graphics:**  
100 W AC adapter, USB-C  
130 W AC adapter, USB-C

**REGULATORY**<sup>8,12</sup> Product Safety, EMC and Environmental Datasheets  
Dell Regulatory Compliance Home Page  
Dell and the Environment

**CHIPSET**<sup>14</sup> 13<sup>th</sup> Generation Intel RPL-U-series  
13<sup>th</sup> Generation Intel RPL-P-series

# PRECISION 3480

## FEATURE TECHNICAL SPECIFICATION

<b>INTEL RESPONSIVENESS TECHNOLOGIES<sup>14,17</sup></b>	Intel® Rapid Storage Technology
<b>HARDWARE SECURITY</b>	Trusted Platform Module (TPM) 2.0 discrete FIPS 140-2 certification for TPM TCG Certification for TPM (Trusted Computing Group) Finger Print Reader in Power Button tied to ControlVault 3 (optional) ControlVault 3 Advanced Authentication with FIPS 140-2 Level 3 Certification Contacted Smart Card and ControlVault 3 Contactless Smart Card, NFC, and ControlVault 3 SED SSD NVMe, SSD and HDD (Opal and non-Opal) per SDL
<b>SENSORS</b>	Ambient Light Sensor Accelerometer in the base: ST Micro LIS2DW12TR Accelerometer in the hinge-up (Upsell config with Emza/ALS/IR camera): ST Micro LNG2DMTR
<b>SYSTEMS MANAGEMENT</b>	Dell Command   Monitor (DCM) Dell Command   Configure (DCC) 4.7 WIN 32, 64-bit Dell Command   Configure (DCC) 4.8 WIN 32, 64-bit Dell Command   Integration Suite (DCIS) Dell Command   Intel vPro (DCIV) Dell Command Update Dell Command Update Win 32

Note: Not all specs may be available in each regions. Please reach out to your Dell Sales Representation, as needed.



## PRECISION

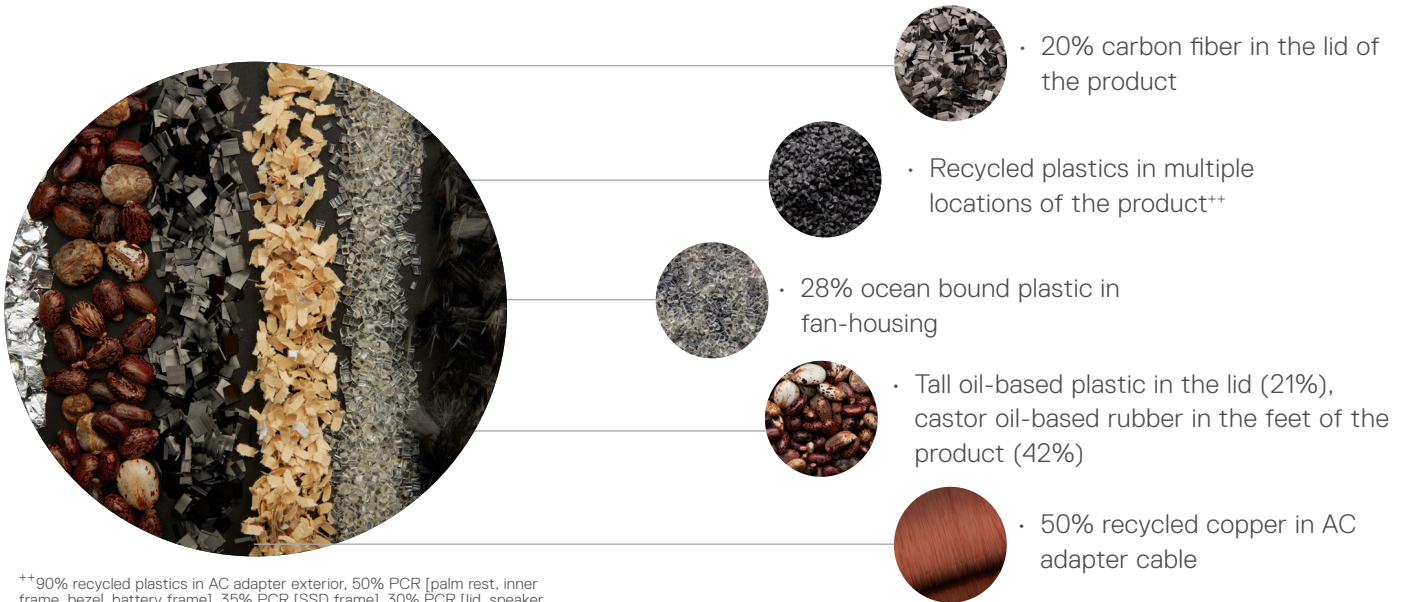
# 3480

## Sustainability on Dell Precision 3480

Delivering innovative technology and solutions to reduce our environmental impact, for ourselves and our customers.

### Sustainable Materials

Our use of sustainable materials helps reduce the environmental impact of making and recycling them.+



\*\*90% recycled plastics in AC adapter exterior, 50% PCR [palm rest, inner frame, bezel, battery frame], 35% PCR [SSD frame], 30% PCR [lid, speaker housing, LCD cover antenna window]

### Packaging Innovation

Ships in new enhanced **100% recycled or renewable packaging that is also 100% recyclable.**+++ Multipack shipping available on eligible products.



### Ecolabels

Eco-labeling standards drive sustainability further by helping customers understand electronic products and the companies that make them. This product meets the following standards:



### Recycle

Securely and responsibly retire your IT equipment with Dell regardless of brand, in support of a circular economy. Learn more at [Dell.com/Recycle](https://Dell.com/Recycle)

See how we are reducing the impact of our products and solutions [Dell.com/Sustainable-Devices](https://Dell.com/Sustainable-Devices)

\* Castor oil-based material rubber in the feet Tall oil-based bioplastic in the lid Ocean bound plastic in the fan housing Carbon fiber in the lid Recycled copper in AC adapter cable Recycled plastic in lid, AC adapter exterior, palm rest, inner frame, bezel, battery frame, SSD frame, speaker housing, LCD cover antenna window Packaging is made from 100% recycled or renewable content and is 100% recyclable.

\*\* Based on internal analysis, January 2023. Select Precision Mobile Workstations (3480, 3580, 3581).15P-H battery pack housing variants do not contain PCR.

\*\*\*Up to 38.8 % recycled content and 61.2 % renewable materials in the form of FSC fibers. Excludes optional items added to order and included in box. Paper packaging materials can be recycled via municipal recycling, where available. System bag is made from recycled plastic and can be recycled along with other thin plastics. See local recycling guidelines.

1. Offering may vary by region. Some items may be available after product introduction. For complete details, refer to the Setup and Specifications published on [www.dell.com/support](http://www.dell.com/support).

2. System Memory and Graphics: Significant system memory may be used to support graphics, depending on system memory size and other factors.

3. 4 GB or Greater System Memory Capability: A 64-bit operating system is required to support 4 GB or more of system memory.

4. Particular versions of Microsoft Windows may not support the full Bluetooth 4.2 functionality.

5. Storage Option: GB means 1 billion bytes and TB equals 1 trillion bytes; actual capacity varies with preloaded material and operating environment and will be less.

6. TPM is available in selected regions.

7. Computrace: Not a Dell offer. Certain conditions apply. For full details, see terms and conditions at [www.lockforlaptops.com](http://www.lockforlaptops.com).

8. Please refer to <https://www.epeat.net> for specific country registration rating and participation.

9. Limited Hardware Warranty: For copy of Ltd Hardware Warranty, write Dell USA LP, Attn: Warranties, One Dell Way, Round Rock, TX 78682 or see [www.dell.com/warranty](http://www.dell.com/warranty).

10. Onsite Service after Remote Diagnosis: Remote Diagnosis is determination by online/phone technician of cause of issue; may involve customer access to inside of system and multiple or extended sessions. If issue is covered by Limited Hardware Warranty ([www.dell.com/warranty](http://www.dell.com/warranty)) and not resolved remotely, technician and/or part will be dispatched, usually with business day following completion of Remote Diagnosis. Availability varies. Other conditions apply.

11. Dell Services: Availability and terms of Dell Services vary by region. For more information, visit <https://www.dell.com/servicesdescriptions>.

12. For complete listing of declarations and certifications, refer to the Dell Regulatory and Environmental Datasheet found in the Manuals section of Product Support information [www.dell.com/support/home/us/en/19](http://www.dell.com/support/home/us/en/19).

13. Based on Dell analysis, January 2023. Applies to Precision 3000/5000, Latitude 5000/7000/9000, Inspiron 16 Plus (7630), and Inspiron 14 Plus (7430). Recycled copper is 50% of total copper weight in the power adapter cable.