





EN

 According to the European WEEE directive, electrical and electronic equipment must not be disposed with consumers waste. Its components must be recycled or disposed apart from each other. Otherwise contaminative and hazardous substances can pollute our environment.
You as a consumer are committed by law to dispose electrical and electronic devices to the producer, the dealer, or public collecting points at the end of the devices lifetime for free. Particulars are regulated in national right. The symbol on the product, in the user's manual, or at the packaging alludes to these terms. With this kind of waste separation, application, and waste disposal of used devices you achieve an important share to environmental protection.

Congratulations on the purchase of the Wireless Mouse with Autolink!
Read the instructions and warning references in this operating instructions carefully, before you use the product for the first time. During neglect it can come to damages of the equipment.

Safety Instructions

1. Put the Device always on a stable and straight Surface. In case of falling, the Device can be damaged.
2. Don't place the Device into direct Sunlight or in Places with high Temperature. This can damage it or shorten his average useful Life.
3. Don't place the Device in the near of Heat Sources, like Radiators or other heat producing Devices.
4. Don't expose the Device to Rain, Water, Wetness or high Humidity.
5. Don't place it in the Bathroom or the Kitchen in the near of a Sink. Avoid the direct Contact with Water.
6. Don't try to open the Device.
7. Prior to the first use of our product make a backup of your data.
8. We are not liable for any loss of data, unless you can accuse us intention or gross negligence.
9. In any case, liability for loss of data is limited to the effort that is necessary to restore from existing backup copies.

 Le symbole CE garantit que ce produit respecte les exigences essentielles de la directive 2004/108/EC du Parlement européen et du Conseil concernant les appareils de télécommunication et terminaux et leurs effets sur la sécurité et la santé des utilisateurs, ainsi que les perturbations électromagnétiques. La conformité à la norme CE a été établie. Les déclarations correspondantes peuvent être consultées chez le constructeur.

2,4 GHz and Autolink.

ARP Wireless Travel Maus.
ARP souris de voyage sans fil.
ARP wireless travel mouse.
ARP draadloze reismuis.

Specification

- Wireless, optical Mini Mouse
- Small, compact Design – ideal for Notebook users
- 2.4GHz FSK Autolink Technology
- 64 RF channels
- 6–10 meters operation range
- 1200 dpi precision
- 3 Standard Buttons
- 3 Level Power Saving Modes
- Nano USB Shape Receiver (can be stowed in the Mouse)
- Auto Power-saving sleeping Function
- Supports Windows ME/2000/ XP/ Vista/7/8/8.1/10 and Mac OS X

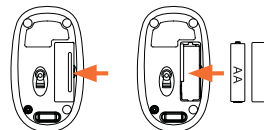
Package Content

- 1 x 2.4G Wireless Mouse with Autolink
- 1 x AA Alkaline Battery
- 1 x User Manual

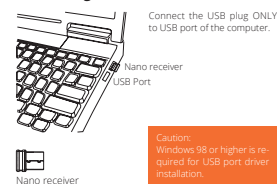
3.2 Installing the Batteries

1. La souris sans fil fonctionne avec une pile alcaline AA.
2. Installation

- Step 1 :** Open the battery compartment.
- Step 2 :** Put the batteries inside of the mouse as shown compartment of the battery
- Step 3 :** Replace the cover

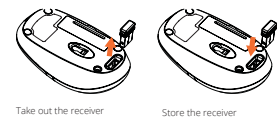


Connecting the Receiver



Stow the receiver in the mouse

1. Please take out the receiver from the mouse as following figure.
2. When you stop the work or go travelling, you can stow the receiver in the mouse as below figure.



Power-Save Function

1. This mouse is equipped with Traveling-Power-Save function.
2. When you are traveling with this mouse, the LED of the mouse will be switched off automatically for power-saving purpose, but you have to disconnect your receiver from your notebook or PC.
3. When you don't click, scroll or move your mouse over 8 seconds, the mouse will switch to sleep mode. To wake up the mouse, you can scroll the wheel or click any buttons on it.

Restoring the default

When the mouse set doesn't work, you can restore the default by the following steps.

1. Check the batteries; if the batteries are flat, please replace new one.
2. Press the right button and middle button (under the scroll wheel) simultaneously.
3. Then, plug the Nano receiver in the USB port of PC or notebook.