

# Unique ultra-slim design and effortless scanning

## DR-C225/DR-C225W

Ultra compact desktop scanner/  
Wi-Fi enabled scanner

you can



imageFORMULA

Canon

# Small, speedy and style-conscious scanners



Scanning made easier with the super-compact and intelligent imageFORMULA DR-C225/DR-C225W – ideal for small office and counter-top environments. The DR-C225W's built-in Wi-Fi allows wireless scanning from mobile, tablet and PC devices.



**B&W  
SPEED**



**COLOUR  
SPEED**



**DAILY DUTY  
CYCLE**



**AUTOMATIC  
DOCUMENT FEEDER**

	B&W SPEED	COLOUR SPEED	DAILY DUTY CYCLE	AUTOMATIC DOCUMENT FEEDER
DR-C225	25ppm	25ppm	1,500 scans/day	30 sheets
DR-C225W (Wi-Fi)*	25ppm	25ppm	1,500 scans/day	30 sheets

\* Scanning speeds may vary dependent on the Wi-Fi network/speeds quoted based on Access Point/Station Mode via Wireless Connection Setup Tool

## Slim profile, unique design

With its innovative and space-saving vertical J-Path design the DR-C225/W sets the standard for ultra-compact desktop scanners.

The vertical J-Path design allows documents to be fed and received vertically, so no extra desk space is required. Side-mounted cables and ports let you place both devices directly against a rear wall, or even on a shelf, for the ultimate in space-saving convenience.



**Unique vertical J-Path design**

## Boosting your productivity

To reduce delays and keep production levels high the DR-C225/W offers easy 'one-touch' scanning. Pressing the scanner's start button boots up your CaptureOnTouch software application and gets you ready to scan in seconds. Canon takes innovation forward with the scanner's intuitive natural feeding concept. This allows users to feed documents into the scanner face up, in their natural orientation.

## Fast, high quality scanning

The DR-C225 delivers impressive double-sided scanning speeds, while the DR-C225W with Wi-Fi offers greater productivity for scanning documents directly to smart devices. Equipped with a CMOS CIS (Contact Image Sensor) unit; high quality images can be produced allowing better text readability for enhanced OCR (Optical Character Recognition) accuracy.

## Extremely versatile and reliable

The DR-C225/W can handle a varied mix of document types. By switching the paper feeding to straight-through path you can scan A3 sized documents (in folio mode), thick documents, embossed cards and 3 metre long documents with ease.

The reliable ultrasonic Double Feed Detection feature accurately detects when more than one sheet is fed simultaneously, which can prevent important information from being lost or missed.

## Simple, intuitive scanning

The DR-C225/W have been designed to encourage easy scanning with an array of intuitive features. The Full Auto Mode feature (when using CaptureOnTouch software) automatically applies the best settings for key document parameters – including text orientation, page size detection, colour, resolution and skip blank page, saving you time and effort.

## Handle exceptions with optional flatbed

Scan bound books, journals and fragile media by adding the Flatbed Scanner Unit 101 for documents up to A4 or Flatbed Scanner Unit 201 for A3 scanning. Connected by USB, these flatbed scanners work seamlessly with the DR-C225 (only) in a smooth dual-scanning operation that lets you apply the same image-enhancement features to any scan.



A4 Flatbed Scanner Unit 101



A3 Flatbed Scanner unit 201

# Introducing the DR-C225W – with built-in Wi-Fi technology, it is the perfect device for scanning wirelessly from mobile, tablet and PC devices.

## Scan with Wi-Fi to Mobile, PC and to the Cloud



## DR-C225W

The DR-C225W with built-in Wi-Fi technology delivers an enhanced customer experience with efficient batch-capture of information to mobile/smart devices. Businesses can also share the DR-C225W wirelessly, amongst office departments by downloading the Canon Wireless Connection Setup Tool/Network Monitor to enable wireless scanning from your PC.

## CaptureOnTouch Mobile App

Scan direct to your iPhone®, iPad® and Android device with the free CaptureOnTouch mobile App. It comes with advanced image processing tools such as automatic size detection, deskew and skip blank page – giving consistently superior image quality results.

Download the free CaptureOnTouch mobile App from Google Play (Android user) and Apple App Store (iOS user).

## Powerful software built for integration and performance

The DR-C225/W are hybrid scanners which accommodate both Mac and Windows users. They are bundled with a great range of desktop software to boost your productivity.

### CaptureOnTouch

Intuitive capture software that makes it quick and simple to achieve premium quality results. CaptureOnTouch incorporates an icon-based user interface with scanning to multiple file formats including PDF, PDF-A, TIFF, JPEG, BMP, PPTX and PNG. CaptureOnTouch can also send captured information directly to data management systems and cloud-based applications (compatible with both Windows and Mac).



A powerful, easy-to-use desktop application that creates, edits and converts PDFs enabling collaboration like never before (compatible with Windows only).

### OmniPage

Convert original paper documents into editable electronic files using OCR (compatible with Windows only).

### PaperPort

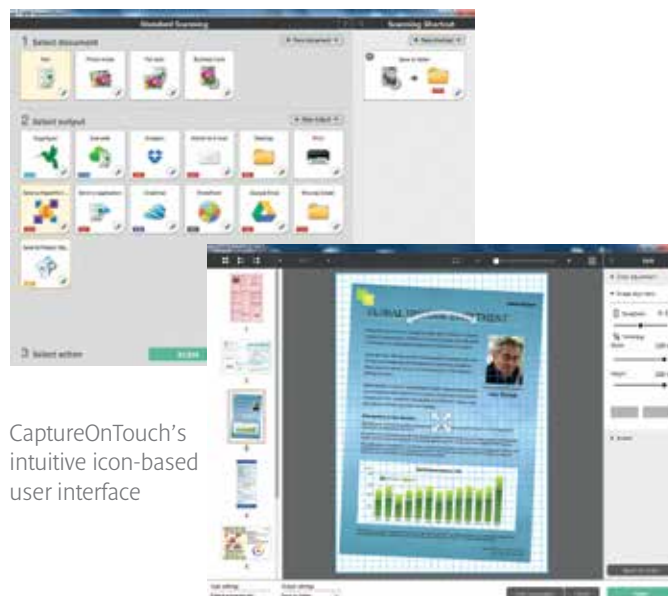
This file management application is renowned for its intuitive and user-friendly graphic user interface, making it easy to store, organise and retrieve your digital documents (compatible with Windows only).

### Presto! PageManager

A simple but powerful filing software for Mac users that enables you to store, organise and edit your digital documents (compatible with Mac only).

### Presto! BizCard

Scan business cards to convert and organise important information into a searchable database (compatible with both Windows and Mac).



CaptureOnTouch's intuitive icon-based user interface



## Specifications: imageFORMULA DR-C225/DR-C225W

<p>Type Document Reading Sensor Optical Resolution Light Source Reading Side Interface</p> <p>Dimensions</p> <p>Weight Power Requirements Power Consumption</p> <p>Operating Environment Environmental Compliance</p>	<p>Desktop Type Sheet Fed Scanner CMOS CIS 1 Line Sensor 600dpi RGB LED Front / Back / Duplex High Speed USB 2.0 IEEE802.11 b/g/n</p> <p>Tray Closed: 300 (W) x 156 (D) x 220 (H)mm Tray Opened: 300 (W) x 235 (D) x 339 (H)mm Approx: 2.7kg (DR-C225W: 2.8kg) AC100 – 240V (50 / 60Hz) Scanning: 12.8W or less, Sleep Mode: 1.9W or less, Power Turned Off: 0.5W or less (DR-C225) Scanning: 15.1W or less, Sleep Mode: 4.1W or less, Power Turned Off: 0.3W or less (DR-C225W) 10 – 32.5°C (50 – 90.5°F), Humidity: 20 – 80% RH RoHS and ENERGY STAR</p>														
<p><b>READING SPEED<sup>1</sup></b> (A4, Portrait, 200dpi) B&amp;W Greyscale Colour</p>	<table> <tr> <th>DR-C225/DR-C225W USB Connection</th><th>DR-C225W (AP/ST – Wi-Fi Mode)</th></tr> <tr> <td>25ppm / 50ipm 25ppm / 50ipm 25ppm / 50ipm</td><td>25ppm / 50ipm 25ppm / 50ipm 25ppm / 50ipm</td></tr> </table>	DR-C225/DR-C225W USB Connection	DR-C225W (AP/ST – Wi-Fi Mode)	25ppm / 50ipm 25ppm / 50ipm 25ppm / 50ipm	25ppm / 50ipm 25ppm / 50ipm 25ppm / 50ipm										
DR-C225/DR-C225W USB Connection	DR-C225W (AP/ST – Wi-Fi Mode)														
25ppm / 50ipm 25ppm / 50ipm 25ppm / 50ipm	25ppm / 50ipm 25ppm / 50ipm 25ppm / 50ipm														
<p><b>DOCUMENT SPECIFICATIONS</b> Width Length Thickness Long Document Card Scanning Folio Mode Business Card</p>	<table> <tr> <th>J-Path</th><th>Straight Through</th></tr> <tr> <td>50.8 – 216mm 70 – 356mm 0.06 – 0.15mm (52 – 128g/m<sup>2</sup>)</td><td>50.8 – 216mm 53.9 – 356mm 0.05 – 0.25mm (40 – 209g/m<sup>2</sup>) Up to 3000mm (Selectable in MS Windows Control Panel) 53.9 x 85.5 x 0.76mm (Embossed card scanning is supported) 216 x 297mm (Max) Width: 49mm – 55mm Length: 85mm – 91mm</td></tr> </table>	J-Path	Straight Through	50.8 – 216mm 70 – 356mm 0.06 – 0.15mm (52 – 128g/m <sup>2</sup> )	50.8 – 216mm 53.9 – 356mm 0.05 – 0.25mm (40 – 209g/m <sup>2</sup> ) Up to 3000mm (Selectable in MS Windows Control Panel) 53.9 x 85.5 x 0.76mm (Embossed card scanning is supported) 216 x 297mm (Max) Width: 49mm – 55mm Length: 85mm – 91mm										
J-Path	Straight Through														
50.8 – 216mm 70 – 356mm 0.06 – 0.15mm (52 – 128g/m <sup>2</sup> )	50.8 – 216mm 53.9 – 356mm 0.05 – 0.25mm (40 – 209g/m <sup>2</sup> ) Up to 3000mm (Selectable in MS Windows Control Panel) 53.9 x 85.5 x 0.76mm (Embossed card scanning is supported) 216 x 297mm (Max) Width: 49mm – 55mm Length: 85mm – 91mm														
<p>Paper Separation Feeder Capacity</p>	<p>Retard Roller Method (Reversing Separator Roller) 30 sheets (80g/m<sup>2</sup>)</p>														
<p><b>OUTPUT</b> Resolution Mode</p>	<p>150 x 150dpi, 200 x 200dpi, 300 x 300dpi, 400 x 400dpi, 600 x 600dpi Black &amp; White, Error Diffusion, Advanced Text Enhancement I, Advanced Text Enhancement II (Advanced Text Enhancement I not available with Mac driver), 8-Bit Greyscale: (256-Level), 24-Bit Colour, Auto Colour Detection</p>														
<table> <tr> <td><b>WI-FI DATA RATE</b></td><td>IEEE802.11b: Max. 11Mbps IEEE802.11g: Max: 54Mbps IEEE802.11n: Max: 300Mbps</td></tr> <tr> <td><b>WI-FI SECURITY</b></td><td>Authentication Mode: Open, Shared, WPA (PSK), WPA2 (PSK) Encryption Protocol: WEP (64/128), TKIP/AES</td></tr> <tr> <td><b>SPECIAL FEATURES</b></td><td>Automatic Page Size Detection, Deskew, 3-Dimensional Colour Correction (partially by driver), Colour Dropout (RGB), Colour Enhancement (Red), Auto Colour Detection, Text Enhancement, MultiStream, Preset Gamma Curve, Scan Panel, Prescan, Character Emphasis, Erase Shadow, Image Rotation, Skip Blank Page, Select Scanning Document Side, Folio, Scan Area Setting, Text Orientation Recognition, Background Smoothing, Shadow Removal (On / Off), Rapid Recovery Scan, Double Feed Detection (Ultrasonic Sensor / By Length), Full Auto Mode</td></tr> <tr> <td><b>BUNDLED SOFTWARE</b> For Windows OS</td><td>ISIS / TWAIN Driver (Windows XP Pro / XP Home / VISTA / 7 / 8) CaptureOnTouch<sup>2</sup> Wireless Connection Setup Tool / Network Monitor (DR-C225W) Nuance eCopy PDF Pro Office Nuance PaperPort Presto! BizCard Reader Plug-in: Microsoft SharePoint®, Evernote, Google Drive™, Dropbox, OneDrive, SugarSync</td></tr> <tr> <td>For Mac OS</td><td>TWAIN Driver CaptureOnTouch<sup>2</sup> Wireless Connection Setup Tool / Network Monitor (DR-C225W) Nuance eCopy PDF Pro Office Presto! PageManager Presto! BizCard Reader Plug-in: Microsoft SharePoint®, Evernote, Google Drive™, Dropbox, SugarSync</td></tr> <tr> <td>Options</td><td>A4 Flatbed 101<sup>3</sup> A3 Flatbed 201<sup>3</sup> Silex C-6600GB – Scan and Print Server<sup>3</sup> Silex SX-D5-4000U2 – USB Device Server<sup>3</sup></td></tr> <tr> <td>Consumables Suggested Daily Duty Cycle</td><td>Exchange Roller Kit 1500 scans/day</td></tr> </table> <p><sup>1</sup> Scanning speeds depend on the specification of PC and the settings of function. <sup>2</sup> Software Developer Kits are available through the Canon Business Solutions Developer Programme – <a href="http://www.canon.europe.com/bsdp">www.canon.europe.com/bsdp</a> <sup>3</sup> These options are only available for the DR-C225.</p>		<b>WI-FI DATA RATE</b>	IEEE802.11b: Max. 11Mbps IEEE802.11g: Max: 54Mbps IEEE802.11n: Max: 300Mbps	<b>WI-FI SECURITY</b>	Authentication Mode: Open, Shared, WPA (PSK), WPA2 (PSK) Encryption Protocol: WEP (64/128), TKIP/AES	<b>SPECIAL FEATURES</b>	Automatic Page Size Detection, Deskew, 3-Dimensional Colour Correction (partially by driver), Colour Dropout (RGB), Colour Enhancement (Red), Auto Colour Detection, Text Enhancement, MultiStream, Preset Gamma Curve, Scan Panel, Prescan, Character Emphasis, Erase Shadow, Image Rotation, Skip Blank Page, Select Scanning Document Side, Folio, Scan Area Setting, Text Orientation Recognition, Background Smoothing, Shadow Removal (On / Off), Rapid Recovery Scan, Double Feed Detection (Ultrasonic Sensor / By Length), Full Auto Mode	<b>BUNDLED SOFTWARE</b> For Windows OS	ISIS / TWAIN Driver (Windows XP Pro / XP Home / VISTA / 7 / 8) CaptureOnTouch <sup>2</sup> Wireless Connection Setup Tool / Network Monitor (DR-C225W) Nuance eCopy PDF Pro Office Nuance PaperPort Presto! BizCard Reader Plug-in: Microsoft SharePoint®, Evernote, Google Drive™, Dropbox, OneDrive, SugarSync	For Mac OS	TWAIN Driver CaptureOnTouch <sup>2</sup> Wireless Connection Setup Tool / Network Monitor (DR-C225W) Nuance eCopy PDF Pro Office Presto! PageManager Presto! BizCard Reader Plug-in: Microsoft SharePoint®, Evernote, Google Drive™, Dropbox, SugarSync	Options	A4 Flatbed 101 <sup>3</sup> A3 Flatbed 201 <sup>3</sup> Silex C-6600GB – Scan and Print Server <sup>3</sup> Silex SX-D5-4000U2 – USB Device Server <sup>3</sup>	Consumables Suggested Daily Duty Cycle	Exchange Roller Kit 1500 scans/day
<b>WI-FI DATA RATE</b>	IEEE802.11b: Max. 11Mbps IEEE802.11g: Max: 54Mbps IEEE802.11n: Max: 300Mbps														
<b>WI-FI SECURITY</b>	Authentication Mode: Open, Shared, WPA (PSK), WPA2 (PSK) Encryption Protocol: WEP (64/128), TKIP/AES														
<b>SPECIAL FEATURES</b>	Automatic Page Size Detection, Deskew, 3-Dimensional Colour Correction (partially by driver), Colour Dropout (RGB), Colour Enhancement (Red), Auto Colour Detection, Text Enhancement, MultiStream, Preset Gamma Curve, Scan Panel, Prescan, Character Emphasis, Erase Shadow, Image Rotation, Skip Blank Page, Select Scanning Document Side, Folio, Scan Area Setting, Text Orientation Recognition, Background Smoothing, Shadow Removal (On / Off), Rapid Recovery Scan, Double Feed Detection (Ultrasonic Sensor / By Length), Full Auto Mode														
<b>BUNDLED SOFTWARE</b> For Windows OS	ISIS / TWAIN Driver (Windows XP Pro / XP Home / VISTA / 7 / 8) CaptureOnTouch <sup>2</sup> Wireless Connection Setup Tool / Network Monitor (DR-C225W) Nuance eCopy PDF Pro Office Nuance PaperPort Presto! BizCard Reader Plug-in: Microsoft SharePoint®, Evernote, Google Drive™, Dropbox, OneDrive, SugarSync														
For Mac OS	TWAIN Driver CaptureOnTouch <sup>2</sup> Wireless Connection Setup Tool / Network Monitor (DR-C225W) Nuance eCopy PDF Pro Office Presto! PageManager Presto! BizCard Reader Plug-in: Microsoft SharePoint®, Evernote, Google Drive™, Dropbox, SugarSync														
Options	A4 Flatbed 101 <sup>3</sup> A3 Flatbed 201 <sup>3</sup> Silex C-6600GB – Scan and Print Server <sup>3</sup> Silex SX-D5-4000U2 – USB Device Server <sup>3</sup>														
Consumables Suggested Daily Duty Cycle	Exchange Roller Kit 1500 scans/day														

## Specifications for imageFORMULA Flatbed Unit 101 and Flatbed Unit 201

	Optional Flatbed Scanner Unit 101	Optional Flatbed Scanner Unit 201
Type Document Reading Sensor Optical Resolution Light Source Interface Dimensions Weight Power Requirements Power Consumption  Environmental Compliance	Universal A4 Flatbed Option  1200dpi  290 (W) x 512 (D) x 88.5 (H)mm 3.5kg (without AC adaptor) AC220 – 240V (50 / 60Hz) Scanning: <15.2W, Sleep Mode: <5.1W Power off: <0.5W	Universal A3 Flatbed Option  600dpi  571 (W) x 436 (D) x 96 (H)mm 8.5kg (without AC adaptor) AC100 – 240V (50 / 60Hz) Scanning: <21W, Sleep Mode: <3.1W Power off: <0.3W
	CCD Sensor LED (RGB) High speed USB 2.0	
	RoHS and ENERGY STAR	
<b>READING SPEED<sup>1</sup></b> B&W / Greyscale (200 / 300dpi) Colour (200dpi) Colour (300dpi)	3 Seconds 3 Seconds 4 Seconds	3.5 Seconds (A3) 4.5 Seconds (A3) 4.5 Seconds (A3)
<b>DOCUMENT SPECIFICATION</b> Width Length	up to 215.9mm up to 355.6mm	up to 297.4mm up to 421.8mm
<b>OUTPUT</b> Resolution	100 x 100dpi, 150 x 150dpi, 200 x 200dpi, 240 x 240dpi, 300 x 300dpi, 400 x 400dpi, 600 x 600dpi, 1200 x 1200dpi	100 x 100dpi, 150 x 150dpi, 200 x 200dpi, 240 x 240dpi, 300 x 300dpi, 400 x 400dpi, 600 x 600dpi
Mode	Black and White, Error Diffusion, Advanced Text Enhancement II, 8-bit Greyscale (256-level), 24-bit Colour, Auto Colour Detection	
<b>SPECIAL FEATURES</b>	Automatic Page Size Detection, Deskew, Ambient Light Cancelling Mode, Scan Area Setting. Additional features inherited from DR-Scanners	
<sup>1</sup> Scanning speeds depend on the specification of PC and the settings of function. Some images are simulated for clarity of reproduction. All data is based on Canon's standard testing methods. This leaflet and the specifications of the product have been developed prior to the date of product launch. Final specifications are subject to change without notice.™ and ®: all company and / or product names are trademarks and / or registered trademarks of their respective manufacturers in their market and / or countries.		



Canon Electronics Inc  
[canon.com](http://canon.com)

Canon Europe  
[canon-europe.com](http://canon-europe.com)

English Edition  
© Canon Europa N.V., 2014

Canon Europe Ltd  
3 The Square  
Stockley Park  
Uxbridge  
Middlesex  
UB11 1ET  
United Kingdom