

# Technical Specifications

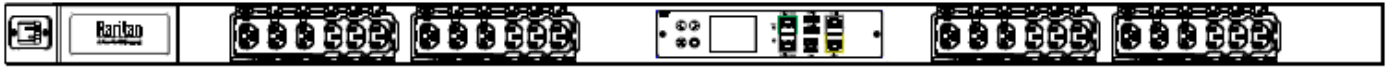
Model Number:

**PX4-23A8C-C8E7A0**

**100-240V, 1Φ, 16/16A, 1.6-3.8kVA**



## LINE DRAWING



## FEATURES

|                                     |   |
|-------------------------------------|---|
| Energy Metering                     | Voltage (V), Current (A), Active Power (kW), Real Power (kVA), Energy (kWh), Power Factor   |
| Metering Accuracy                   | Class 0.5 meter (see page 3 for details)  |
| Metering per Input Line             | Yes   |
| Metering per Branch Circuit Breaker | No  |
| Metering per Output Receptacle      | No  |
| Remote Outlet Switching             | Yes   |
| Power Quality Monitoring            | Voltage and Current Harmonic Distortion; Distortion Power Factor; Voltage Dip and Voltage Swell; Neutral Current, Current Inrush, Crest Factor                              |
| Outlet Power Distribution           | Alternating Branch  |
| Replaceable Controller              | Yes, hot-swappable  |
| Environmental Sensor Ready          | Yes   |
| Networking                          | Gigabit (10/100/1000 BaseT) Ethernet port; Secondary, redundant (10/100/1000 BaseT) Ethernet port; Optional Wi-Fi (802.11a/b/g/n)   |
| Remote Management                   | HTTP(s); SSH (CLI); Telnet; RS-232 (Serial); SNMP version v2/v3; SMTP; JSON-RPC API; MODBUS-TCP; Redfish API  |
| Cascading                           | Yes, Max 16 PDUs can be daisy chained using a USB connection and 32 PDUs using Ethernet connection  |
| Linking                             | Yes, a maximum of 8 PDUs can be linked using the PDU Link Port; PDU 1 is defined as the Primary PDU and can link up to 7 additional PDUs, called Link PDUs, totaling 8 PDUs |

## Technical Specifications

Model Number:

**PX4-23A8C-C8E7A0**

**100-240V, 1Φ, 16/16A, 1.6-3.8kVA**



### INPUT

|                        |                                |
|------------------------|--------------------------------|
| Input Plug             | No Plug (2P3W)                 |
| Cord Length            | 0 meters (0 feet)              |
| Cord Entry             | Bottom-front feed              |
| Number of Power Cords  | 1                              |
| Input Current, Maximum | 16/16A                         |
| Input Current, Rating  | 16 (UL), 16A (International)   |
| Input Voltage, Nominal | 100/240V, Single phase         |
| Input Voltage, Rated   | 100 - 240V                     |
| Input Frequency        | 50/60Hz                        |
| Power Capacity         | 1.6kVA at 100V, 3.8kVA at 240V |

### OUTPUT

|                                  |   |
|----------------------------------|---|
| Voltage, Nominal                 | 100 - 240V  |
| Voltage, Rated                   | 100 - 240V  |
| Receptacles (Output Connections) | (12) IEC320 C13 Locking, 12A; (12) Cx Locking, 16A  |
| Outlet Indicators                | Yes, R/G/B LEDs; Outlet Powered On/Off, Above/Below Threshold, Outlet Service Mode - Outlet On/Off, Suspect Outlet/Trip Forensics - Outlet Off, Circuit Breaker Trip/Fuse Blown - Outlet On/Off, Boot Up Sequence |
| Outlet Locking                   | Yes   |
| SecureLock (P-lock) Support      | Yes   |
| Overload Protection              | N/A   |

### PHYSICAL

|                             |   |
|-----------------------------|---|
| Color                       | Black powder coat (custom colors available) |
| Material of Construction    | Extruded Aluminum                           |
| Unit Dimensions (WxDxH)     | 2.2" x 2.6" x 51.1" ; 56mm x 65mm x 1298mm  |
| Unit Weight                 | TBD   |
| Shipping Dimensions (WxDxH) | TBD   |
| Shipping Weight             | TBD   |
| Mounting                    | Tool-less button mount                      |

# Technical Specifications

Model Number:

**PX4-23A8C-C8E7A0**

**100-240V, 1Φ, 16/16A, 1.6-3.8kVA**



## ENVIRONMENTAL

|                             |                             |
|-----------------------------|-----------------------------|
| Operating Temperature       | 60°C                        |
| Operating Relative Humidity | 5% to 95% (non-condensing)  |
| Operating Elevation         | 0 to 3048m; 0 to 10,000ft   |
| Storage Temperature         | -30 to 80°C/ -22 to 176°F   |
| Storage Relative Humidity   | 0% to 95%                   |
| Storage Elevation           | 0 to 15,000m; 0 to 50,000ft |

## CONFORMANCE

|                      |   |
|----------------------|---|
| Regulatory Approvals | UL Listed and CE, Canada ICES-003, Part 15 Class A of the FCC rules, RoHS compliant |
| Warranty             | 2-year manufacturer warranty  |

## ACCURACY

|                              | Input Measurement                                   | Output Measurement              |
|------------------------------|---|---------------------------------|
| LCD & GUI Current            | ±0.2% at 0.01 A resolution                          | ±0.2% at 0.01 A resolution      |
| Voltage                      | ±0.2% at 0.1 V resolution                           | ±0.2% at 0.1 V resolution       |
| Voltage, Neutral             | ±1% at 0.1 V resolution                             | n/a                             |
| Current, Neutral             | ±0.5% at 1% FS resolution (FS is PDU ampere rating) | n/a                             |
| Active Power                 | ±0.5% at 1 W resolution                             | ±0.5% at 1 W resolution         |
| Apparent Power               | ±0.5% at 1 VA resolution                            | ±0.5% at 1 VA resolution        |
| Reactive Power               | ±1% at 1 VA reactive resolution                     | ±1% at 1 VA reactive resolution |
| Power Factor                 | ±1% at 0.01 resolution                              | ±1% at 0.01 resolution          |
| Crest Factor                 | ±1% at 0.1 resolution                               | ±1% at 0.1 resolution           |
| Active Energy                | ±0.5% at 0.1 kWh resolution                         | ±0.5% at 0.1 kWh resolution     |
| Apparent Energy              | ±0.5% at 0.1 kVAh resolution                        | n/a                             |
| Reactive Energy              | ±1.0% at 0.1 kVAh resolution                        | ±1.0% at 0.1 kVAh resolution    |
| Voltage, Harmonic Distortion | 1.0%  | 1.0%                            |
| Current, Harmonic Distortion | 5.0%  | 5.0%                            |

## Branch Measurement

|         |                          |
|---------|--------------------------|
| Current | ±1% at 0.01 A resolution |
|---------|--------------------------|

# Technical Specifications

Model Number:

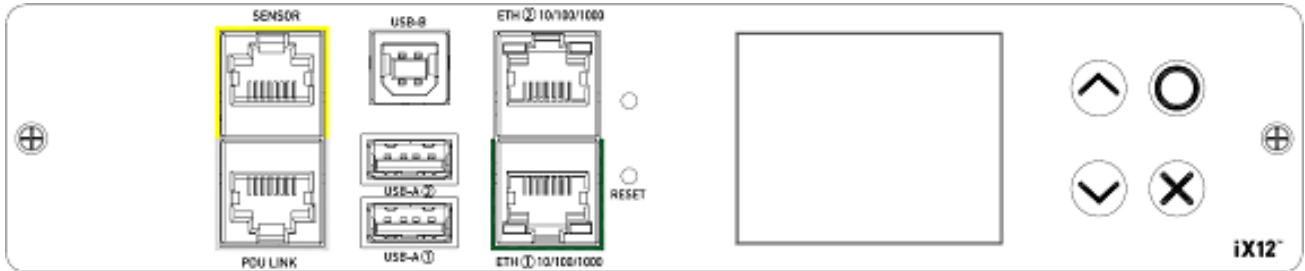
**PX4-23A8C-C8E7A0**

**100-240V, 1Φ, 16/16A, 1.6-3.8kVA**

# Raritan®

A brand of **Legrand**

## CONTROL PANEL



## FEATURES

|                       |  |
|-----------------------|--|
| Controller Version    | iX12   |
| Swappable/Replaceable | Yes, hot-swappable   |
| Onboard Display       | Voltage, current, or active power (per line, or per receptacle /outlet); Alarms; Configuration information (name, ratings, IP/Networking information); Auto-flip orientation |
| SmartSensors          | Yes, compatible sensors: Temperature, Humidity, Airflow, Differential Air Pressure, Water/Leak, Dust/Particle, Proximity/Motion, Vibration, and Sensor Hubs                  |
| SmartLock             | Yes, compatible sensors: Contact and Contact Closure   |

## PANEL FEATURES

|  |   |
|--|---|
| Control Buttons                                  | Navigate to the menu in the manual mode (Up, Down, Back, or Switch between automatic and manual modes, OK)                  |
| Multi-Color LCD                                  | Shows information on the device, built-in components, and connected peripheral devices                                      |
| Reset Button                                     | Restarts the device's firmware without any loss of power to outlets   |
| Dual Networking Gig E 10/100/1000 Ethernet Ports | Supports up to 1000 Mbps; also supports extended cascading  |
| Dual (2) USB-A Ports                             | Supports USB-A wireless LAN adapters; iOS mobile devices; cascading for sharing a network connection. Power rating 5V/500mA |
| USB-B Port                                       | Supports CLI and cascading for sharing a network connection   |
| PDU Link Port                                    | For power sharing, cascading, and current monitoring  |
| Sensor Port                                      | RJ45 connector; Power/control sensor packages/actuators, current monitoring; also supports Sensor Hubs                      |

# Technical Specifications

Model Number:

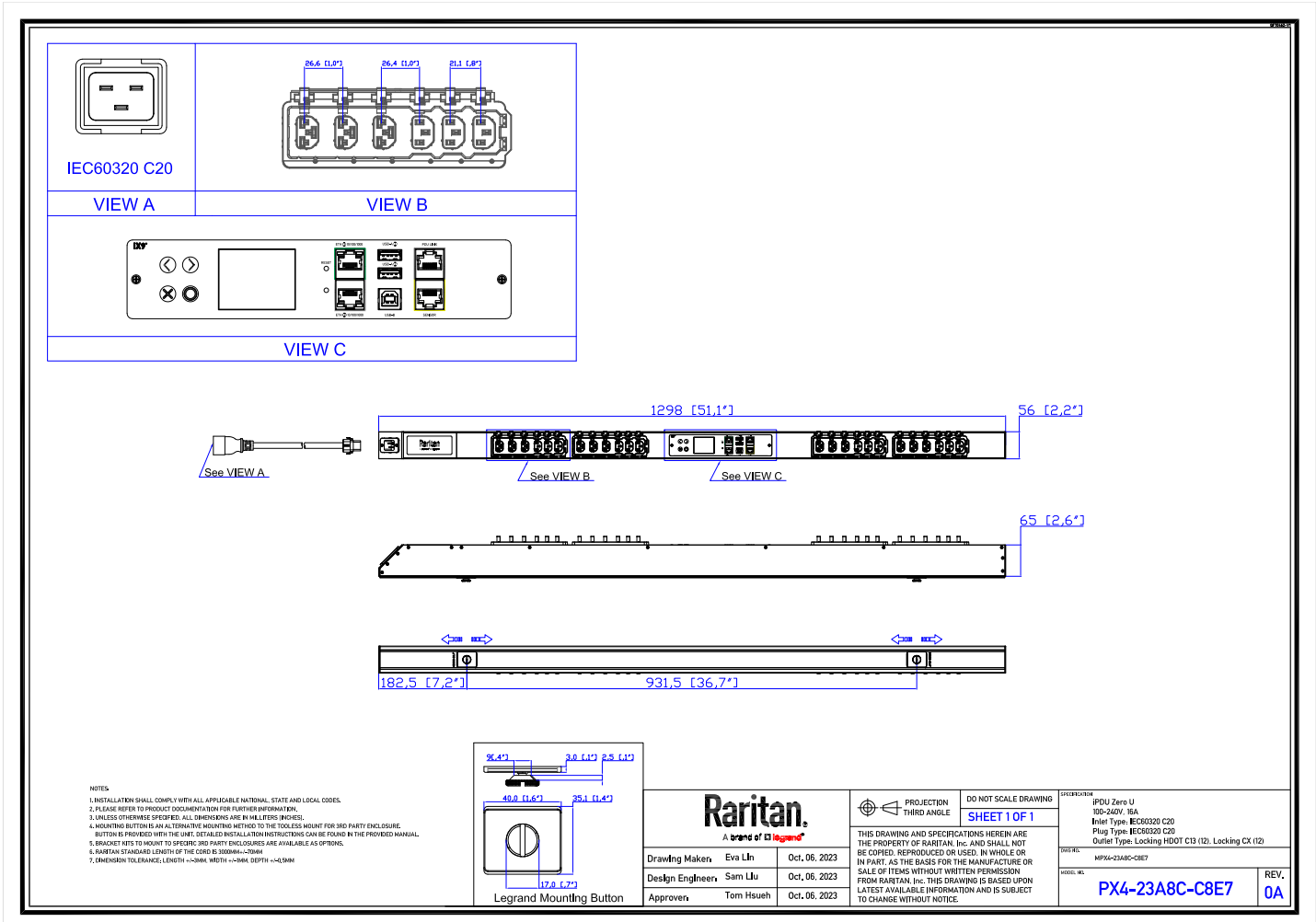
**PX4-23A8C-C8E7A0**

**100-240V, 1Φ, 16/16A, 1.6-3.8kVA**

# Raritan®

A brand of **Legrand**

## MECHANICAL DIAGRAM



# Technical Specifications

Model Number:

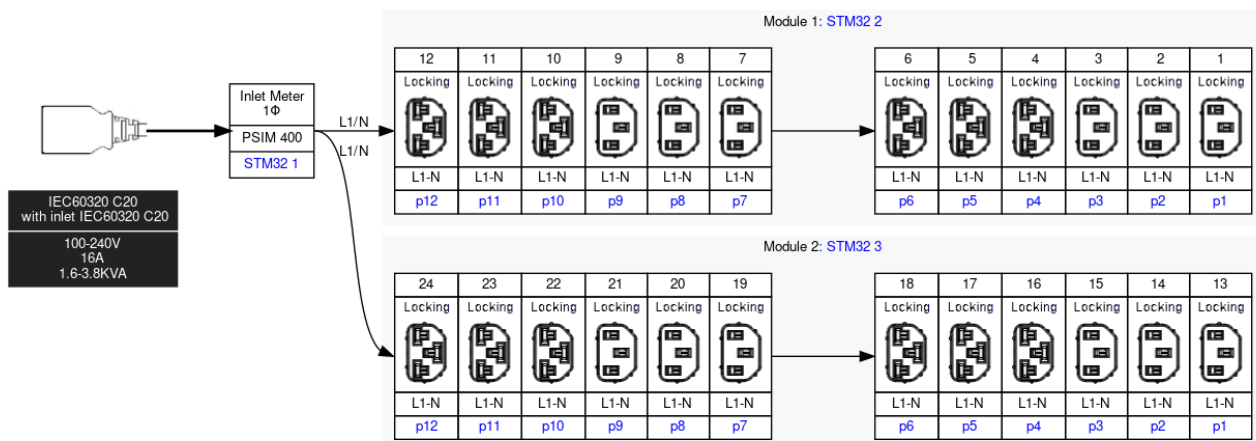
**PX4-23A8C-C8E7A0**

**100-240V, 1Φ, 16/16A, 1.6-3.8kVA**

# Raritan®

A brand of **Legrand**

## ELECTRICAL (ONE LINE) DIAGRAM



## Technical Specifications

Model Number:

**PX4-23A8C-C8E7A0**

**100-240V, 1Φ, 16/16A, 1.6-3.8kVA**



### ADDITIONAL INFORMATION

Warranty: Raritan offers a standard 2-year limited parts and labor warranty. Extended support is available at the time of purchase. Contact your local Raritan representative for more information.

Patents: Information on Raritan patents is available at [www.raritan.com/patents](http://www.raritan.com/patents)

"Global" models are typically for use in countries outside of North America. Contact your local Raritan representative for more information about which models are appropriate for your application.

Information in this document is current as of time of publishing. Contact your local Raritan representative for the most up-to-date information.

This datasheet was generated on October 21, 2025.

Interested in learning more about how Raritan products can help you manage and distribute power in your data center? Visit us online at [www.raritan.com](http://www.raritan.com)

©2023 Legrand. All rights reserved. The industry-leading brands of Raritan, Server Technology, Starline, and Ortronics empower Legrand's Data, Power & Control to deliver innovative solutions for data centers, building networks, and facility infrastructures.

PDF technology powered by Apryse™ and distributed by Legrand DPC, LLC under license. All rights reserved.