

QL-800 Series

Professional Label Printers



	QL-800	QL-810W	QL-820NWB
Black/Red printing*	●	●	●
P-touch Editor Lite	●	●	
USB	●	●	●
Wi-Fi		●	●
Wired Ethernet			●
Bluetooth			●
Stand-alone printing			●
Optional Li-ion battery		●	●

* requires DK-22251 roll

Print in both **red*** and **black**

- **Low heat = red print**
- High heat = black print
- Direct thermal means no ink is needed.



* requires DK-22251 roll

Wide range of connectivity options:

- **USB, Wi-Fi, Wired Network, Bluetooth, AirPrint, Made for iPhone/iPad....**
- **Works with PC, Mac, Android, iPhone, iPad....**



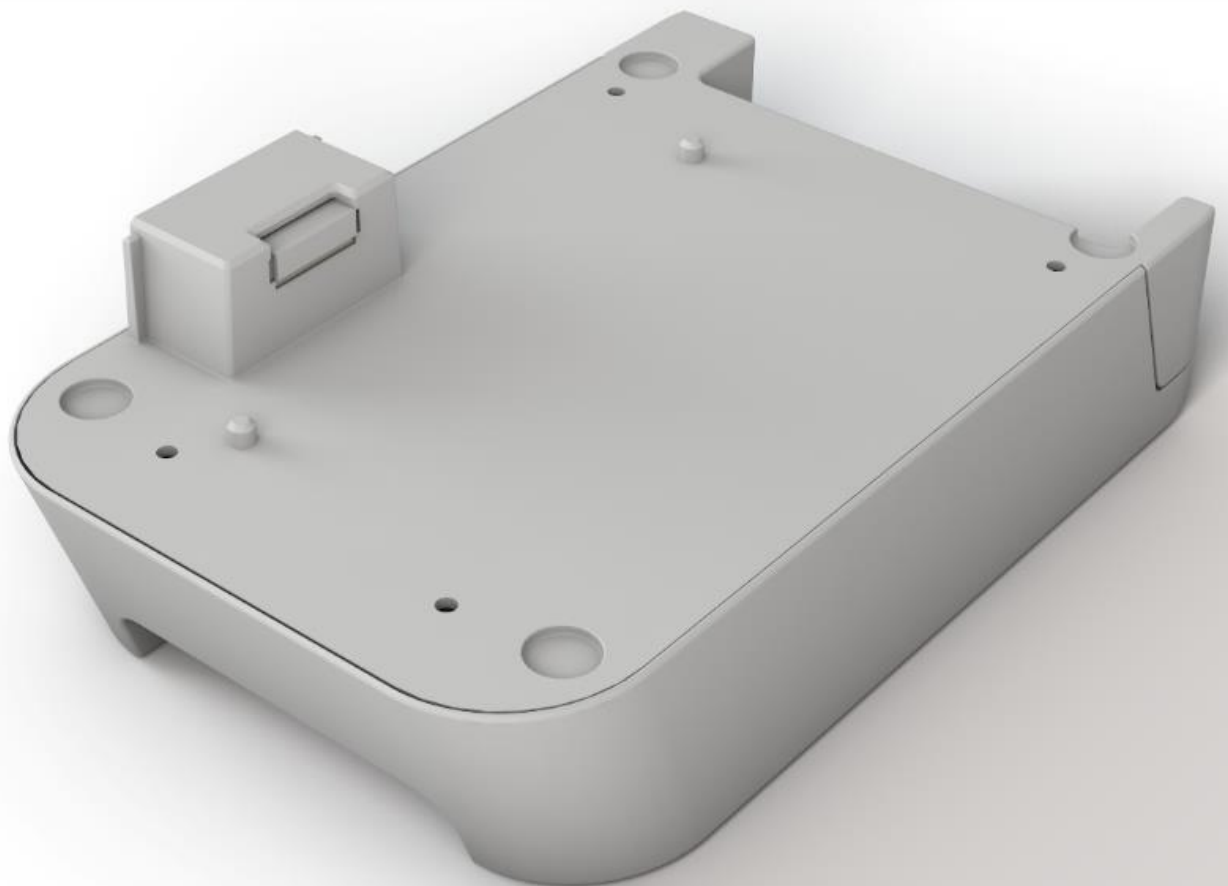
Stand-alone label printing functionality:

- Design your labels and upload to the QL-820NWB memory....
- **Then simply select the label on the Backlit LCD display and print....**



Optional Li-ion battery base:

- Use the QL-810W/QL-820NWB away from power sources.
- **Prints over 4,000 labels (black) and over 1,000 labels (red/black) when fully charged.**
- **And only takes 2.5 hours to fully charge....**



QL-800 Series Datasheet

brother
at your side

	QL-800	QL-810W	QL-820NWB
Included items			
In the box	Printer Standard address die-cut labels (100 labels) 2-colour print continuous roll (62mm x 5 metres) USB cable AC power cord Documentation	Printer Standard address die-cut labels (100 labels) 2-colour print continuous roll (62mm x 5 metres) USB cable AC adapter and power cord Documentation	
Printing / Media			
Printing technology	Direct thermal with 2 colour print capability		
Print resolution	300x300dpi (standard) / 300x600dpi (high resolution mode)		
Print speed (single colour)*	Max 148mm/sec (93 labels/minute)	Max 176mm/sec (110 labels/minute)	
Print speed (two-colour)*	Max 24mm/sec (equivalent to 15 labels/minute)		
Label widths	12mm - 62mm		
Maximum print width	60.96mm		
Maximum print length	1 metre		
Media sensor type	Reflective		
Cutter	Yes (full cut / guillotine type)		
Media types	DK Rolls (DK die-cut labels / DK continuous tape)		
LCD			
Type	-	-	320x120 dot graphic LCD with backlight
Connectivity			
USB	USB version 2.0 full-speed (type mini-B connector)		
USB host capability	-	-	Yes (HID class)
Bluetooth	-	-	Bluetooth 2.1+EDR
Bluetooth profiles	-	-	SPP(Serial Port Profile) OPP(Object Push Profile) BIP(Basic Imaging Profile) HCRP(Hard Copy Cable Replacement Profile)
iOS and Android compatibility	-	-	Yes
Wireless LAN	-	IEEE802.11b/g/n	
Wireless LAN security	-	WEP, WPA-PSK/WPA2-PSK (TKIP/AES), LEAP (CKIP), EAP-FAST (TKIP/AES), PEAP (TKIP/AES), EAP-TLS (TKIP/AES), EAP-TLS (TKIP/AES)	
Airprint	-	Yes	
Memory			
Flash (for label templates)	-	6MB	
Locations (for label templates)	-	99	255
Power			
Power	220-240V AC internal power supply	100-240V AC external adapter (auto switching)	
Battery (optional accessory)	-	Li-ion battery including base	
Battery print yield	-	4,300 labels (mono) / 1,400 labels (2 colour)	
Battery Charging time	-	Less than 2 hours 30 minutes	
Weights/Dimensions			
Dimensions	125(w) x 213(h) x 142(d) mm	125(w) x 234(h) x 145(d) mm	
Weight	1.15kg	1.12kg	1.16kg

QL-800 Series Datasheet



	QL-800	QL-810W	QL-820NWB
Software / Firmware			
Operating system support (visit http://support.brother.com for latest downloads and support)	Microsoft® Windows Vista®/ Windows® 7 / Windows® 8 Windows® 8.1 / Windows® 10 OS X v 10.10 / 10.11 / 10.12 Android 4.1 or higher	Microsoft® Windows Vista®/ Windows® 7 / Windows® 8 Windows® 8.1 / Windows® 10 Windows Server® 2008 / 2008 R2 / Windows® Server 2012 / 2012 R2 Android 4.1 or higher (SDK) iOS 6, 7 or higher (SDK only) iOS 8, 9, 10 or higher (iPrint & Label)	
SDK availability (visit http://www.brother.eu/developer)	b-PAC (for Windows)	b-PAC (for Windows) Brother Print SDK for Android™ Brother Print SDK for iPhone/iPad (for iOS)	
Supported printer commands	Raster	ESC/P P-touch Template Raster	ZPLII emulation (upon request) ESC/P P-touch Template Raster
Barcode symbologies (using P-touch Editor)	CODE39, CODE128, UCC/EAN128(GS1-128), ITF(I-2/5), CODABAR(NW-7), UPC-A, UPC-E, EAN13, EAN8, ISBN-2(EAN13 AddOn2), ISBN-5(EAN13 AddOn5), Laser Barcode, POSTNET, RSS(RSS14 Standard, RSS14 Truncated, RSS14 Stacked, RSS14 Stacked Omni, RSS Limited, RSS Expanded, RSS Expanded Stacked), PDF417(Standard, Truncate, Micro), QR code(Model1, Model2, Micro), Data Matrix(ECC Square, ECC Rectangular), MaxiCode(Model2, Model3, Model4, Model5) RSS symbols / CODE93 / POSTNET / UPC/EAN EXTENSION / MSI / QR Code (model 1, model 2, micro QR) PDF417 (Standard, Truncate, MicroPDF417) / Data Matrix(ECC200 Square, ECC200 Rectangular) / MaxiCode / Aztec		
Barcode symbologies (Built-in printer firmware)	-	CODE39, CODE128, UCC/EAN-128(GS1-128), ITF(I-2/5), CODABAR(NW-7), UPC-A, UPC-E, EAN13(JAN13), EAN8, GS1 DataBar(RSS)(GS1 DataBar Omnidirectional, GS1 DataBar Truncated, GS1 DataBar Stacked, GS1 DataBar Stacked Omnidirectional, GS1 DataBar Limited, GS1 DataBar Expanded, GS1 DataBar Expanded Stacked), PDF417(Standard, Truncate, Micro), QR Code(Model 1, Model 2, Micro), Data Matrix (ECC200 Square, ECC200 Rectangular), MaxiCode, CODE93, POSTNET, UPC-E EXTENTION	
Internal fonts	-	Bitmap fonts: Letter Gothic Bold, Helsinki, Brussels, San Diego, Brougham Font sizes: 24, 32, 49 dots Outline fonts: Letter Gothic Bold, Helsinki, Brussels Font sizes: 33-400 dots (22 sizes))	