

ePowerSwitch 4^{R3}



ePowerSwitch 4 Release 3 is a power strip that enables remote power management of four devices over Intranet, the Internet or locally through an RS-232 serial connection. It also offers IP devices monitoring and enables a remote soft shutdown of a server through an RS232 serial connection. This device includes a Real Time Clock with Scheduler to turn on/off the power outlet.

The ePowerSwitch supports the HTTP, DHCP, Syslog and SNMP protocols.

On, off and restart functions

The power outlets can be controlled through an Ethernet connection. The serial interface also enables to trigger a soft shutdown of a server with shutdown capabilities.

Programmable restart delay

A restart delay (5-60 seconds) can be set for the power outlets.

Concurrent access / IP security

Access to the ePowerSwitch is protected by name and password. The administrator account allows complete configuration and control of the power outlet over a web browser. The administrator can create up to 40 concurrent user accounts with restricted rights.

Easy and fast configuration

Full configuration can be performed through the Web using a web browser. The Network configuration can be done through the provided Windows tool over the LAN or through a Terminal connection.

Easy to use

The power strip can be used for remote control of the power supply of PC's, servers and routers but also for SOHO applications. It is available with the main used power outlets in Europe and can be mounted in a 19" rack. The optional wall mount kit enables to fix the power strip against a wall.

Programmable labels

To avoid confusion during operation, you can attribute a 32-character label to the device, power outlets, user accounts, rules..

Rules

Up to 32 rules (IP device monitoring, scheduler, timer) can be create.

Scheduler and Timer rules

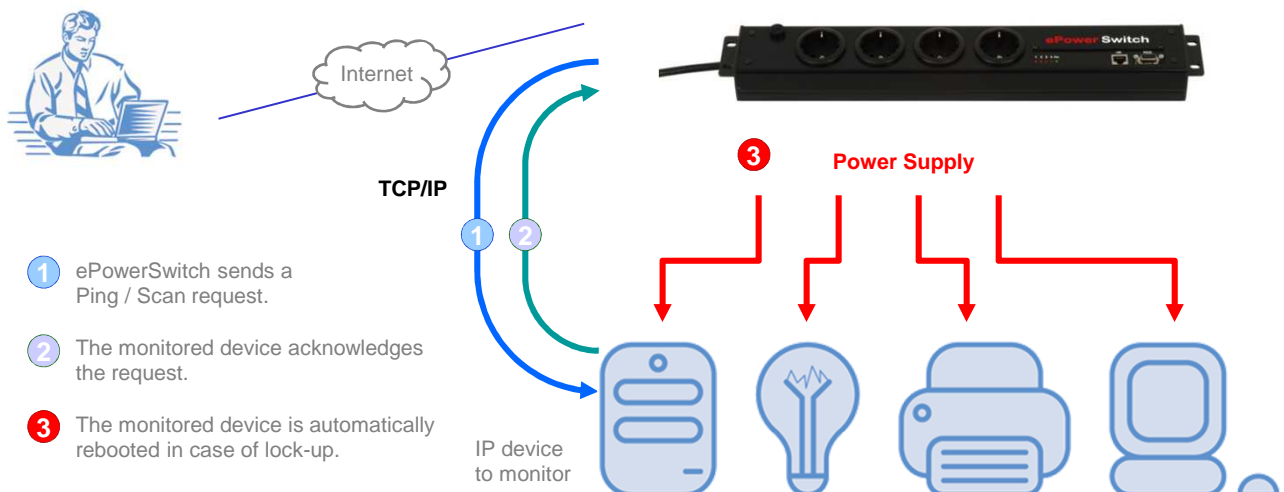
The ePowerSwitch 4-port includes a Real Time Clock and can automatically carry out rules to trigger scheduled tasks.

IP devices monitoring

A Watchdog function lets you monitor four IP devices (server, router, camera...). In case of lock-up of the monitored device, this one can be automatically rebooted.

Developer facility

Developers can use the specific page functionality for an easy implementation of the power outlets control through the network in their own program.



Benefits

- Remote power control of four power outlets.
- Free definable labels for the device, power outlets, rules...
- Control and configuration over IP and RS232 connection.
- Monitoring of four IP devices with automatic reboot in case of lock-up.
- Soft shutdown of a server with shutdown capabilities.
- 1 administrator account and 40 users accounts with concurrent access.
- Easy and fast configuration.
- Status LEDs for power input, network and power outlets.
- Improved log file reporting.
- On line help.
- Firmware updateable over the LAN.



Power strip for 19" rack mounting
(wall mounting kit in option)

What's included

- ▶ 1 Power Strip 19" rack mountable model
Ref: EPS-4 F 19 EPS-4 D 19 EPS-4 C 19



French



German (Schuko)

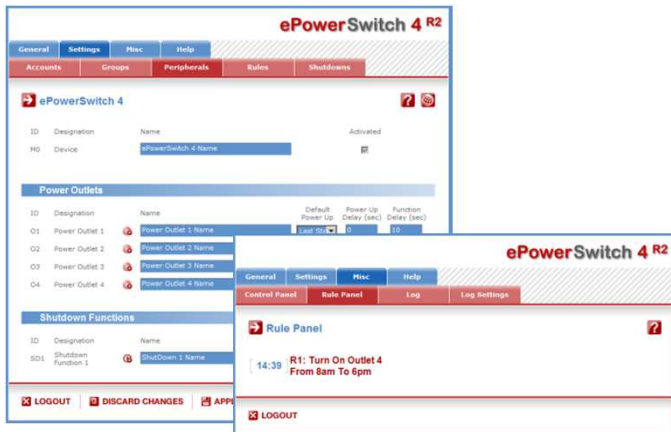


Swiss

- ▶ 1 serial cable (SUB-D9 male/female) 1,80 m
- ▶ 1 RJ45 cable 1,80 m
- ▶ 1 CD-ROM containing user guide in English and Windows IP configuration tool

Web Pages

The settings for the Web Server and the control of the power outlets are organized by an easy to use set of tabs.



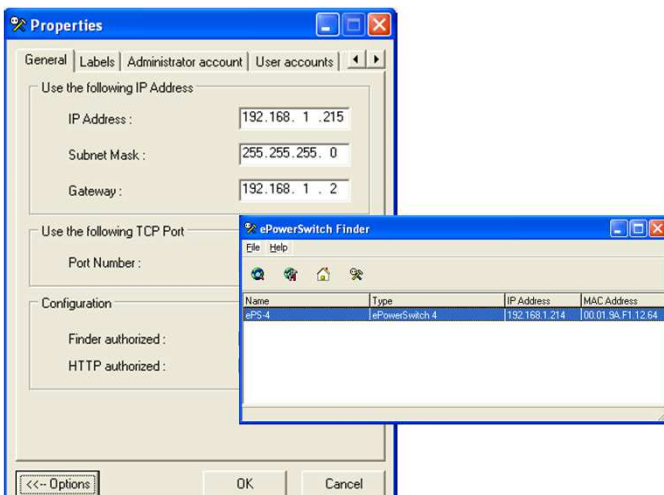
Technical features

- 1 input power socket: FR, DE, or CH power outlet (see above diagrams) 10 A
- ▶ Nominal input voltage: 100 - 240 V/50Hz
- ▶ Maximum current: 10A

- ▶ 4 outputs power socket : FR, DE, or CH power outlet (see above diagrams)
- ▶ Output voltage: 100 - 240 V/50Hz
- ▶ Maximum current/outlet: 10A

Windows configuration tool

This convenient Windows program provides an easy and quick way to configure your ePowerSwitch especially by the first settings of the Network parameters.



- ▶ Network standards: IEEE 802.3, 10/100 Mbit/s
- ▶ Network protocols: TCP/IP, HTTP
- ▶ Network connection: RJ-45 for UTP CAT5
- ▶ Max.network cable length: 100 m (not included)

- ▶ Terminal connection: RS-232, SUB-D 9 female
- ▶ Connection Bus: RS-485, RJ-45

- ▶ LED's: power and network traffic socket status

- ▶ Operating temperature: 0°C to + 40°C
- ▶ Operating humidity: 10% to 80%
- ▶ Dimensions: 478 x 73 x 49 mm
- ▶ Weight: 1 kg

- ▶ Approvals: CE, EN55022 & EN55024, RoHS
- ▶ Guarantee: 2 years repair or replace

Distributor :

Application

