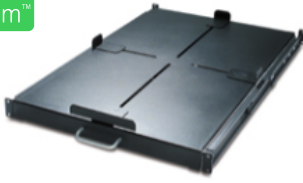


# Product datasheet

Specifications



## Sliding Shelf 200lbs/91kg Black

AR8128BLK

### Overview

**Presentation** Sliding shelf to enable the mounting of tower units, monitors, and other equipment into the rack environment.

**Lead time**

### Main

**Number of rack unit** 1U  
**Number of cables** 1  
**Provided equipment** Installation guide  
Mounting hardware  
4 x retaining clips

### Physical

**Colour** Black  
**Height** 4.4 cm  
**Width** 44.5 cm  
**Depth** 71.1 cm  
**Net weight** 15.91 kg  
**Mounting location** Front  
**Mounting preference** No preference  
**Mounting mode** Rack-mounted  
**Maximum mounting depth** 101.6 cm  
**Minimum mounting depth** 71.12 cm  
**Permanent permissible load** 90.72 kg static

### Conformance

**Standards** EIA-310D

### Packing Units

**Unit Type of Package 1** PCE  
**Number of Units in Package 1** 1  
**Package 1 Height** 21.6 cm  
**Package 1 Width** 92.7 cm

Package 1 Length	64.8 cm
Package 1 Weight	21.315 kg

## Offer Sustainability

Sustainable offer status	Green Premium product
REACH Regulation	<a href="#">REACH Declaration</a>
REACH free of SVHC	Yes
EU RoHS Directive	Pro-active compliance (Product out of EU RoHS legal scope) <a href="#">EU RoHS Declaration</a>
Toxic heavy metal free	Yes
Mercury free	Yes
RoHS exemption information	<a href="#">Yes</a>
Take-back	Take-back program available

## Contractual warranty

Warranty	2 years repair or replace
----------	---------------------------

## Recommended replacement(s)