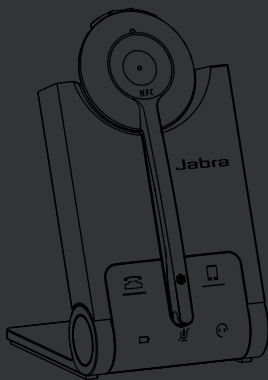


Jabra[®]
YOU'RE ON

JABRA PRO 925



User Manual

jabra.com/pro925

A BRAND BY

GN Netcom

© 2014 GN Netcom A/S. All rights reserved. Jabra® is a registered trademark of GN Netcom A/S. All other trademarks included herein are the property of their respective owners. The Bluetooth® word mark and logos are owned by the Bluetooth SIG, Inc. and any use of such marks by GN Netcom A/S is under license. (Design and specifications subject to change without notice).

MADE IN CHINA

MODEL WHB005HS/
WHB005BS



Declaration of Conformity can be found on
www.jabra.com/CP/US/declarations-of-conformity

1. WELCOME	4
2. PRODUCT OVERVIEW	5
3. CHARGE THE HEADSET	8
4. HOW TO WEAR	10
5. HOW TO CONNECT.....	12
6. HOW TO USE	17
7. VOICE GUIDANCE	19
8. BASE LED INDICATORS	20
9. SOFTWARE	22
10. ADVANCED SETTINGS.....	23
11. SUPPORT	26
12. TECHNICAL SPECIFICATIONS	27

1. WELCOME

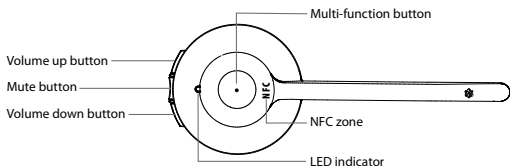
Thank you for using the Jabra PRO 925. We hope you will enjoy it!

JABRA PRO 925 FEATURES

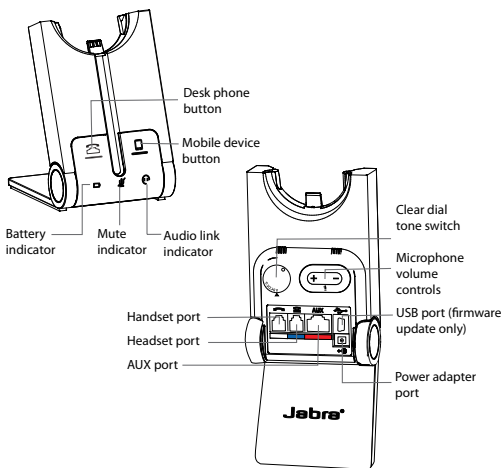
- Plug and play simplicity
- Wireless freedom - up to 100m/300ft from base
- 12 hours talk-time
- NFC technology - one touch pairing

2. PRODUCT OVERVIEW

2.1 HEADSET

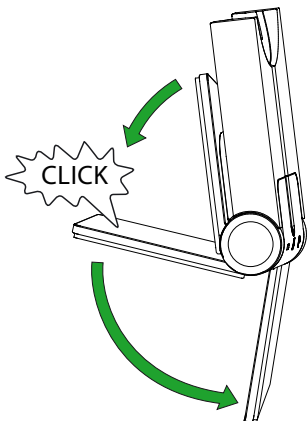


2.2 BASE



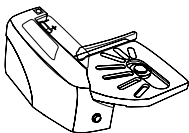
FOLDABLE BASE STAND

The Jabra PRO 925 base stand can be folded into three positions: open, closed and standing.

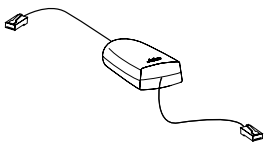


2.3 OPTIONAL ACCESSORIES

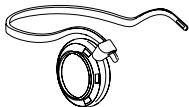
The following Jabra PRO accessories are available separately. Visit jabra.com for a full accessory overview.



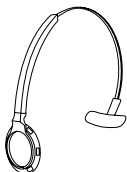
Jabra GN1000



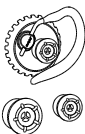
Electronic hookswitch adapter
(actual product may vary from illustration)



Neckband attachment



Replacement headband attachment



Replacement earhook, with
earbuds



Replacement ear cushions



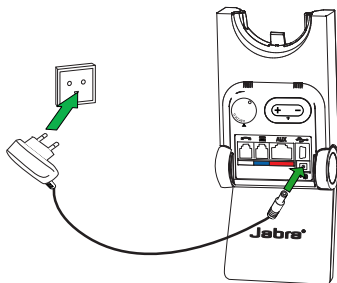
AC power cable



Charging cable






3. CHARGE THE HEADSET

The headset will charge when docked in the base, and the base is connected to a power supply.

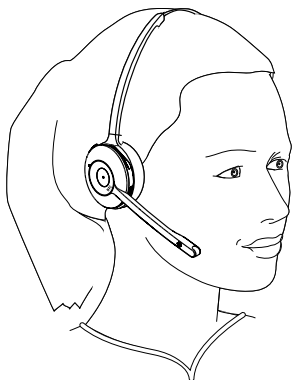


It takes approx. 3 hours to charge the headset.

3.1 HEADSET BATTERY STATUS

WHAT YOU SEE	BATTERY LEVEL
	High
	Medium
	Low
	Very low
	Battery charging

4. HOW TO WEAR



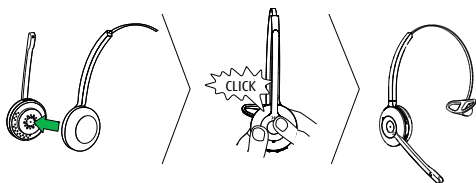
The Jabra PRO 925 headset can be worn in three different wearing-styles:

- Headband
- Earhook (optional accessory)
- Neckband (optional accessory)

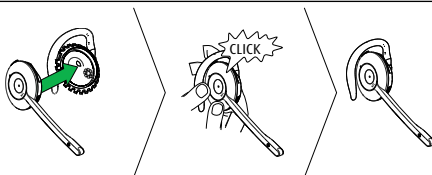
All wearing-styles can be worn on either the left or right ear.

NOTE: It is important to position the microphone close to the mouth for maximum noise cancellation.

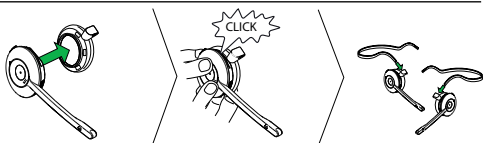
4.1 HEADBAND



4.2 EARHOOK (OPTIONAL ACCESSORY)





4.3 NECKBAND (OPTIONAL ACCESSORY)

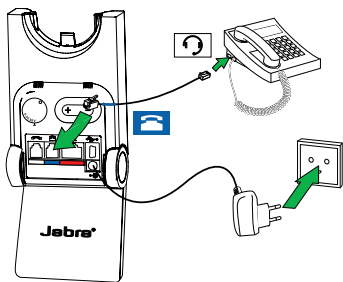


NOTE: The neckband or earhook can be purchased on jabra.com



5. HOW TO CONNECT

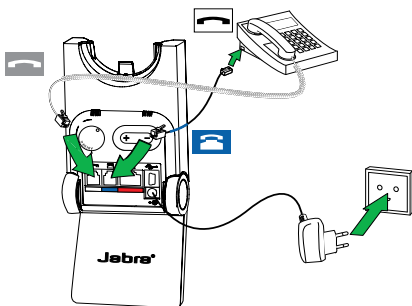
5.1 CONNECT TO DESK PHONE (WITH HEADSET PORT)

1. Connect the base to a power supply.
2. Plug the supplied telephone cable into the port marked  on the base.
3. Connect the telephone cable to the headset port  on the desk phone. The desk phone icon will light up when connected.
4. Dock the headset in the base.



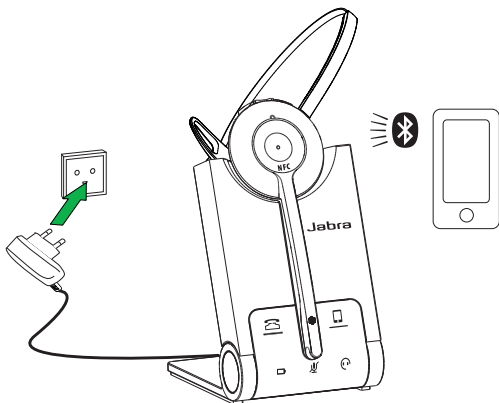
5.2 CONNECT TO DESK PHONE (WITHOUT HEADSET PORT)

1. Connect the base to a power supply.
2. On the desk phone, unplug the handset cable from the phone body.
3. Connect the handset cable to the port  marked on the base.
4. Plug the supplied telephone cable into the port  on the base.
5. Connect the telephone cable to the handset port on the desk phone. The desk phone icon will light up when connected.
6. Dock the headset in the base.



5.3 CONNECT TO MOBILE DEVICE

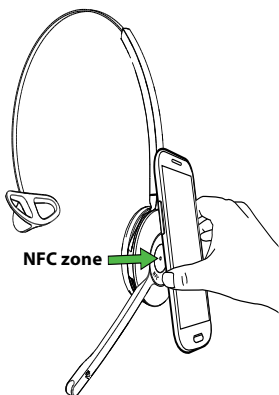
1. Connect the base to a power supply.
2. Press the Mobile device button on the base.
3. Pairing mode will be announced in the headset and the mobile device icon will light up.
4. Follow the voice-guided pairing instructions in the headset to pair to your Bluetooth device.



5.4 CONNECT TO MOBILE DEVICE (NFC)

NFC is a faster, simpler way to connect two Bluetooth devices.

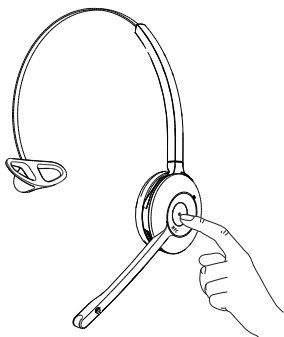
1. Ensure NFC is enabled on the mobile device.
2. Tap the NFC zone on the mobile device against the NFC zone on the headset.



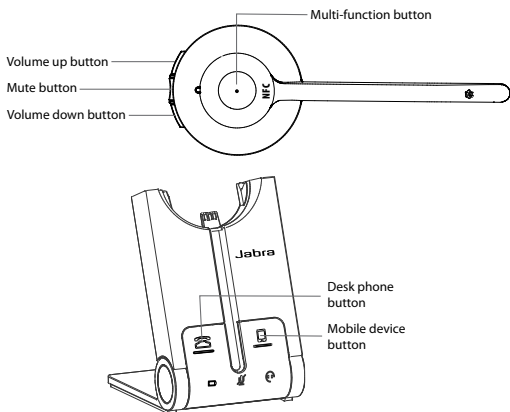
5.5 CONNECT TO MOBILE DEVICE (WITHOUT BASE)

It is possible to connect the headset directly to a mobile device.

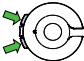
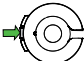

1. Ensure the headset is turned off.
2. Press and hold (5 seconds) the Multi-function button to turn the headset on and enter pairing mode.
3. Follow the voice-guided pairing instructions in the headset to pair to your mobile device.



6. HOW TO USE





FUNCTION	ACTION
Headset on/off	Press (1 sec) the Multi-function button to turn on. Press (3 secs) to turn off
Answer/end call	Tap the Multi-function button
Reject call	Double-tap the Multi-function button
Initiate call (Desk phone)	Tap the Multi-function button when not on a call
Voice dial (mobile device)	Press (1 sec) the Multi-function button when not on a call

	Adjust speaker volume	Tap the Volume up or Volume down button
	Mute/un-mute	Tap the Mute button
	Initiate or answer a call on the selected device	Tap the Desk phone button or Mobile device button on the base

6.1 MULTIPLE CALL HANDLING

The headset can accept and handle multiple calls.

	CALL FUNCTION	HOW TO DO IT
	End current call and answer incoming call	Tap the Multi-function button
	Switch between held call and active call	Press and hold (2 secs) the Multi-function button
	Put current call on hold and answer incoming call	Press and hold (2 secs) the Multi-function button
	Reject incoming call, and continue active call	Double-tap the Multi-function button
	Put current call on hold, and answer incoming call	Tap the Desk phone button or Mobile device button on the base

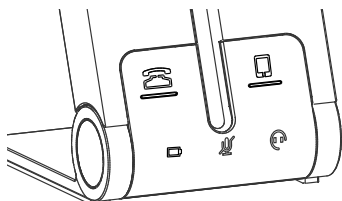
7. VOICE GUIDANCE

The headset plays a variety of voice announcements to indicate status and connection guidance.






LISTEN	WHAT YOU HEAR
	Go to the Bluetooth menu on your mobile device and connect to Jabra PRO
	Power on
	Power off
	Low battery
	Mobile connected
	Mobile disconnected
	Desk phone connected
	Desk phone disconnected
	Mute on
	Mute off

8. BASE LED INDICATORS

The Jabra PRO 925 base has five LEDs to indicate battery, call status and events.



LED	EVENT
	Incoming call
	On call
	Call on hold
	Attempting to connect
	Battery charging (slow flash)
	Full battery
	Low battery
	Very low battery (fast flash)

LED	EVENT
	Sleep mode (slow flash)
	Unknown battery status
	Microphone muted
	Active audio link between headset and base
	Searching for headset

9. SOFTWARE

9.1 JABRA PC SUITE

Jabra PC Suite is a collection of software designed to support, manage and enable optimal functionality for Jabra devices.

Download the latest version - jabra.com/pcsuite

9.2 UPDATE FIRMWARE

Updating firmware improves performance or adds new functionality to your Jabra PRO 925.

To update firmware:

1. Connect to a PC using a USB cable (not supplied).
2. Download and install Jabra PC Suite.
3. Launch Jabra Firmware Updater, or check for the latest firmware via Jabra Control Center.

10. ADVANCED SETTINGS

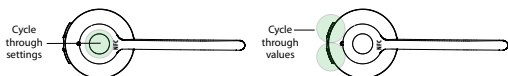
Six advanced settings can be configured using the headset.














- Mute reminder tone
- Open phone line on undock
- Intellitone
- Wireless range
- Remote call control
- Wideband audio

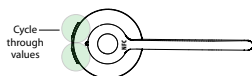
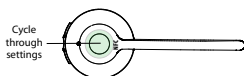
10.1 CHANGE THE ADVANCED SETTINGS

1. Wear the headset, and simultaneously press and hold (5 secs) the volume buttons on the headset until you hear 'setup', and then release the buttons.
2. Tap the Multi-function button to cycle through the settings (see table below). Each setting will be announced in the headset. To change a setting, use the volume buttons to cycle through the setting values, and tap the Multi-function button to select the value.
3. When finished, simultaneously press and hold (5 secs) the volume buttons until you hear 'goodbye', then release the buttons. The base will reset and update the settings.

10.2 LIST OF ADVANCED SETTINGS



SETTING LIGHT	SETTING	VALUE LIGHT	VALUE
 x1	Mute reminder tone		On
			Off
 x4	Open phone line on undock		On
			Off
 x5	Intellitone		Peakstop
			Peakstop and Intellitone
 x6	Wireless range		Normal range
			Low range
			Very low range



SETTING LIGHT	SETTING	VALUE LIGHT	VALUE
			Auto detect
			GN1000, RHL or none
	Remote call control		Jabra IQ
			DHSG
			MSH
			Optipoint
	Wideband audio		Off
			On

11. SUPPORT

11.1 FAQ

View the full FAQ on [Jabra.com/pro925](https://www.jabra.com/pro925).

11.2 HOW TO CARE FOR YOUR JABRA DEVICE

- Always store the headset with the power off.
- Avoid storage at extreme temperatures (below -20°C/-4°F or above 45°C/113°F). This can shorten battery life and may affect speaker operation.
- Do not expose the headset or base to rain or other liquids.

12. TECHNICAL SPECIFICATIONS

JABRA PRO 925	SPECIFICATION
Weight:	Headset: 28g Base: 176g
Dimensions:	Headset: H 131mm x W 50mm x 18mm Base: H 118mm x W 76mm x L 29mm
Microphones:	Noise reduction microphone
Speakers:	Wideband speaker
Operating range:	Up to 100m/300ft (class 1)
Bluetooth version:	4.0
Paired devices:	Up to 8 paired devices, Two active device connected at a time
Supported Bluetooth profiles:	Hands Free Profile (v1.6), Headset profile(v1.2)
Talk time:	Up to 12 hours
Standby time:	Up to 7 days
Operating temperature:	-0°C to 40°C (32°F to 104°F)
Storage temperature:	-20°C to 45°C (-4°F to 113°F)
Pairing passkey or PIN:	0000

