

Philips
LCD monitor with USB-C

B Line
27" (68.5 cm)
2560 x 1440 (QHD)

276B9



Simplify your connections

with USB-C

View Quad HD image and re-charge your laptop all at the same time with a single USB-C cable. SmartErgo base, Flicker-free and LowBlue mode make work easy-on-the eyes.

Single cable USB-C connection

- Connect your notebook with one USB-C cable
- Power and re-charge compatible notebook from the monitor
- USB 3.2 high-speed data transfer

Excellent performance

- Crystal clear images with Quad HD 2560 x 1440 pixels
- IPS technology for full colours and wide viewing angles

Designed for the way you work

- SmartErgoBase enables user-friendly ergonomic adjustments
- Less eye fatigue with Flicker-Free technology
- LowBlue Mode for easy-on-the-eyes productivity
- HDMI ensures universal digital connectivity

Designed for sustainability

- Designed to meet environmental standards
- PowerSensor saves up to 80% energy costs

PHILIPS

LCD monitor with USB-C
B Line 27" (68.5 cm), 2560 x 1440 (QHD)

276B9/00

Highlights

USB-C connection



This Philips display features a USB type-C connector with power delivery. With intelligent and flexible power management, you can power charge your compatible device directly. Its slim, reversible USB-C allows for easy, one-cable connection. You can watch high-resolution video and transfer data at super speed, while powering up and recharging your compatible device at the same time.

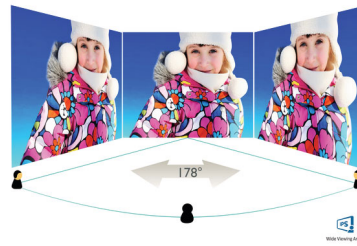
Power and re-charge notebook

This monitor features a built-in USB-C connector that meets USB Power Delivery standard. With intelligent and flexible power management, you can now power up and/or re-charge your compatible* Notebook directly from the Monitor using a single USB-C cable.

CrystalClear images

These Philips screens deliver Crystal Clear, Quad HD 2560 x 1440 or 2560 x 1080 pixel images. Utilising high-performance panels with high-density pixel count, enabled by high-bandwidth sources like Displayport, HDMI and Dual link DVI, these new displays will make your images and graphics come alive. Whether you are a demanding professional requiring extremely detailed information for CAD-CAM solutions, a user of 3D graphic applications or a financial wizard working on huge spreadsheets, Philips displays will give you Crystal Clear images.

IPS technology



IPS displays use advanced technology that gives you extra-wide viewing angles of 178/178 degrees, making it possible to view the display from almost any angle — even in 90-degree Pivot mode! Unlike standard TN panels, IPS displays gives you remarkably crisp images with vivid colours, making it ideal not only for Photos, films and web browsing, but also for professional applications that demand colour accuracy and consistent brightness at all times.

SmartErgoBase



The SmartErgoBase is a monitor base that delivers ergonomic display comfort and provides cable management. The user-friendly height, swivel, tilt and rotation angle adjustments of the base allow the monitor to be positioned for maximum comfort to help ease the physical strains of a long workday. In addition, cable management reduces cable clutter and keeps the workspace neat and professional.

Flicker-Free technology



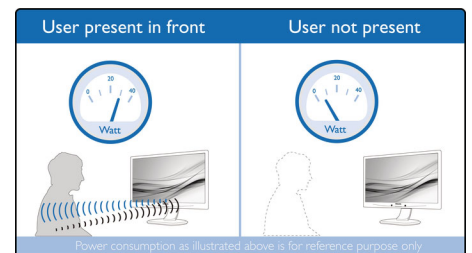
Due to the way brightness is controlled on LED-backlit screens, some users experience flicker on their screen which causes eye fatigue. Philips Flicker-Free technology applies a new solution to regulate brightness and reduce flicker for more comfortable viewing.

LowBlue Mode



Studies have shown that just as ultra-violet rays can cause eye damage, shortwave-length blue light rays from LED displays can cause eye damage and affect vision over time. Developed for wellbeing, the Philips LowBlue Mode setting uses a smart software technology to reduce harmful shortwave blue light.

PowerSensor



PowerSensor is a built-in 'people sensor' that transmits and receives harmless infrared signals to determine if the user is present and then automatically reduces monitor brightness when the user steps away from the desk, cutting energy costs by up to 80 percent and prolonging monitor life



USB-C



Quad HD



Wide Viewing Angle



SmartErgo Base



3-sided Frameless



Flicker-free



LowBlue Mode



EasyRead



PowerSensor

Specifications

Picture/Display

- LCD panel type: IPS technology
- Adaptive sync
- Backlight type: W-LED system
- Panel Size: 27 inch / 68.5 cm
- Display Screen Coating: Anti-Glare, 3H, Haze 25%
- Effective viewing area: 596.74 x 335.66 mm
- Aspect ratio: 16:9
- Maximum resolution: 2560 x 1440 @ 75 Hz*
- Pixel Density: 108.79 PPI
- Response time (typical): 4 ms (Grey to Grey)*
- Brightness: 350 cd/m²
- Contrast ratio (typical): 1000:1
- SmartContrast: 50,000,000:1
- Pixel pitch: 0.2331 x 0.2331 mm
- Viewing angle: 178° (H)/178° (V), @ C/R > 10
- Picture enhancement: SmartImage
- Display colours: 16.7 M
- Colour gamut (typical): NTSC 90%*, sRGB 114%*
- Scanning Frequency: 30–114 kHz (H)/48–75 Hz (V)
- sRGB
- Flicker-free
- LowBlue Mode
- EasyRead

Connectivity

- Signal Input: DisplayPort 1.2 x 1, HDMI 1.4 x 1, USB-C 3.2 Gen 1 x 1 (upstream, power delivery up to 65 W)
- USB: USB-C x 1 (upstream), USB 3.2 x 4 (downstream with 1 fast charge B.C 1.2)
- HDCP: HDCP 1.4 (DP/HDMI/USB-C)
- Audio (In/Out): Audio out
- Sync Input: Separate Sync

USB

- USB-C: Reversible plug connector
- Super speed: Data and Video transfer
- DP: Built-in DisplayPort Alt mode
- Power delivery: USB PD version 3.0
- USB-C max. power delivery: Up to 65 W (5 V/3 A; 9 V/3 A; 10 V/3 A; 12 V/3 A; 15 V/3 A; 20 V/3.25 A)

Convenience

- Built-in Speakers: 2 W x 2
- User convenience: SmartImage, Input, PowerSensor, Menu, Power On/Off
- Control software: SmartControl
- OSD Languages: Brazil Portuguese, Czech, Dutch, English, Finnish, French, German, Greek, Hungarian, Italian, Japanese, Korean, Polish, Portuguese, Russian, Simplified Chinese, Spanish, Swedish, Traditional Chinese, Turkish, Ukrainian
- Other convenience: Kensington lock, VESA mount (100 x 100 mm)
- Plug and Play Compatibility: DDC/CI, Mac OS X, sRGB, Windows 10 / 8.1 / 8 / 7

Stand

- Height adjustment: 150 mm

- Pivot: -/+ 90 degree
- Swivel: -/+ 175 degree
- Tilt: -5/30 degree

Power

- ECO mode: 19.7 W (typ.)
- Energy Label Class: F
- On mode: 18.6 W (typ.) (EnergyStar test method)
- Standby mode: 0.3 W
- Off mode: Zero watts with Zero switch
- Power LED indicator: Operation - White, Standby mode - White (flashing)
- Power supply: Built-in, 100–240 VAC, 50–60 Hz

Dimensions

- Product with stand (max height): 614 x 558 x 224 mm
- Product without stand (mm): 614 x 372 x 61 mm
- Packaging in mm (W x H x D): 690 x 462 x 250 mm

Weight

- Product with stand (kg): 7.75 kg
- Product without stand (kg): 5.30 kg
- Product with packaging (kg): 10.62 kg

Operating conditions

- Temperature range (operation): 0°C to 40°C °C
- Temperature range (storage): -20°C to 60°C °C
- Relative humidity: 20%-80 %
- Altitude: Operation: +12,000 ft (3658 m), Non-operation: +40,000 ft (12,192 m)
- MTBF (demonstrated): 70,000 hrs (excluded backlight)

Sustainability

- Environmental and energy: PowerSensor, EnergyStar 8.0, EPEAT*, TCO Certified Edge, RoHS
- Recyclable packaging material: 100 %
- Post-consumer recycled plastic: 85%
- Specific Substances: PVC/BFR free housing, Mercury free

Compliance and standards

- Regulatory Approvals: EPA, CB, TUV/GS, TUV Ergo, SEMKO, CU-EAC, EAEU RoHS, MEPS, RCM, PSB, PSE, VCCI, CCC, CECP, CEL, FCC Class B, ICES-003, CE Mark, UKRAINIAN

Cabinet

- Front bezel: Black
- Rear cover: Black
- Foot: Black
- Finish: Texture

What's in the box?

- Monitor with stand
- Cables: HDMI cable, DP cable, USB-C to C/A cable, Power cable
- User Documentation



Issue date 2021-03-11

Version: 2.1.2

12 NC: 8670 001 69538
EAN: 87 12581 76993 2

© 2021 Koninklijke Philips N.V.
All Rights reserved.

Specifications are subject to change without notice.
Trademarks are the property of Koninklijke Philips N.V.
or their respective owners.

www.philips.com

* "IPS" word mark / trademark and related patents on technologies belong to their respective owners.

* The maximum resolution works for either HDMI, DP or USB-C input.

* Response time value equal to SmartResponse

* NTSC Area based on CIE 1976

* sRGB Area based on CIE1931

* Activities such as screen sharing and online streaming over the Internet can impact your network performance. Your hardware and network bandwidth will determine the overall audio and video quality.

* For USB-C power and charging function, your Notebook/device must support USB-C standard Power Delivery specifications. Please check with your Notebook user manual or manufacturer for more details.

* For Video transmission via USB-C, your Notebook/device must support USB-C DP Alt mode

* EPEAT rating is valid only where Philips registers the product. Please visit <https://www.epeat.net/> for registration status in your country.

* The monitor may look different from feature images.

* This monitor is not suitable for use in locations where children are likely to be present.