

Data Sheet

FUJITSU Accessories Port Replicators, Cradle, Keyboard Docking for LIFEBOOK & STYLISTIC

Connect to your peripherals. Adapt to the task on demand

Flexibility, expandability, desktop replacement and investment protection are among the benefits of FUJITSU accessories. The port replicators and cradles are designed specifically for your LIFEBOOK, STYLISTIC and mobile CELSIUS, empowering you to connect to your display, keyboard and mouse with one click in the office. Enjoy the versatility of the keyboard docking options and Active Pen to adapt your tablet to the task on demand while on the move.

Reliability

- High quality and stability
- Everything you need from one source

Ease of Use

- Connect your notebook or tablet instantly to all your peripherals
- One-hand release mechanism (mechanical port replicator)
- Leave your peripherals plugged into the Port Replicator
- Wide range of interfaces
- Hot docking
- Family port replicator supporting products across several generations (depending on model)
- Optional power-on button for selected notebooks providing extra convenience in the office



Port Replicator for LIFEBOOK U7411 and U7511

Technical details

| | |
|------------------------------|------------------------|
| DC-in | 1 (19 V) |
| Power on switch | 1 |
| Audio: line-in / microphone | 1 |
| Audio: line-out / headphone | 1 |
| USB 3.1 Gen1 (USB 3.0) total | 4x Type-A 2x Type-C |
| USB Type-A | 4 |
| USB Type-C (to Devices) | 2 |
| DisplayPort | 2 |
| VGA | 1 |
| HDMI | 1 |
| Kensington Lock support | 1 (Portrep only) |
| Ethernet (RJ-45) | 1 |
| Order code | FPCPR402BP |



Port Replicator for LIFEBOOK U7 and E5 family (2020)

Technical details

| | |
|-----------------------------------|------------------------|
| DC-in | 1 (19 V) |
| Power on switch | 1 |
| Audio: line-in / microphone | 1 |
| Audio: line-out / headphone | 1 |
| USB 3.1 Gen1 (USB 3.0) total | 4x Type-A 2x Type-C |
| USB Type-A | 4 |
| USB Type-C (to Devices) | 2 |
| DisplayPort | 2 |
| VGA | 1 |
| DVI | 1 |
| Kensington Lock support | 1 (Portrep only) |
| Ethernet (RJ-45) | 1 |
| Order code | S26391-F1607-L109 |
| Order code Port Replicator Bundle | S26391-F1607-L119 |



Port Replicator for LIFEBOOK U7 and E5 family with key lock (2020)

Technical details

| | |
|------------------------------|---|
| DC-in | 1 (19 V) |
| Power on switch | 1 |
| Audio: line-in / microphone | 1 |
| Audio: line-out / headphone | 1 |
| USB 3.1 Gen1 (USB 3.0) total | 4x Type-A 2x Type-C |
| USB Type-A | 4 |
| USB Type-C (to Devices) | 2 |
| DisplayPort | 2 |
| VGA | 1 |
| DVI | 1 |
| Kensington Lock support | 1 (key lock to secure Portrep & System) |
| Ethernet (RJ-45) | 1 |
| Order code | S26391-F1607-L209 |



CELSIUS® H780 Port Replicator Kit

Technical details

| | |
|-----------------------------------|--|
| DC-in | 1 |
| Power on switch | 1 |
| Audio: line-in / microphone | 1 |
| Audio: line-out / headphone | 1 |
| USB 3.1 Gen1 (USB 3.0) total | Type-C (Gen1) 2 x, Type-A (Gen1) 4 x |
| DisplayPort | 1x DP 1.2 (next to Analog RGB connector; 1x DP 1.4 (next to USB 3.1 connector); DP++support; x1 through DP on dGPU, x1 via DP-Splitter; DP#1 on Portrep and HDMI on main unit are alternative. |
| VGA | 1x (up to 1,920 x 1,200 via Portrep internal DP-Splitter) |
| DVI | 1x (up to 1,920 x 1,200 via Portrep internal DP-Splitter) |
| Kensington Lock support | 1 |
| Ethernet (RJ-45) | 1 |
| Dimensions (W x D x H) | 404 x 94 x 28 mm |
| Weight | 540 g |
| Order code Port Replicator Bundle | S26391-F2249-L300 (Port Replicator and 330 W power supply w/o cable) |



STYLISTIC Q7311, Q7310 and STYLISTIC Q5010 Family Cradle

| | |
|-------------------------|-------------------|
| DC-in | 1 |
| USB 3.1 Gen2 total | 3 |
| DisplayPort | 1 |
| VGA | 1 |
| Kensington Lock support | 1 |
| Ethernet (RJ-45) | 1 |
| LAN / Ethernet (RJ-45) | 1 |
| Order code | S26391-F3397-L100 |



STYLISTIC Q5010 Keyboard Dock

Technical details

| | |
|------------------|--------------------|
| DC-in | 1 |
| Ethernet (RJ-45) | 1 |
| Weight | 385 g |
| Order code | S26391-F-3409-L2** |



Backlit Keyboard Dock for STYLISTIC Q7311 and Q7310

Technical details

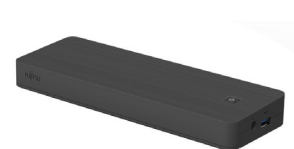
| | |
|------------------------|-------------------|
| DC-in | 1 |
| Ethernet (RJ-45) | 1 |
| LAN / Ethernet (RJ-45) | 1 |
| Weight | 572 g |
| Order code | S26391-F3399-L2** |



USB Type-C Port Replicator 2

Technical details

| | |
|-----------------------------|---|
| DC-in | 1 (19 V) |
| Power on switch | 1 |
| Power on switch | Resume from S3 (S4/S5/G3 depending on FUJITSU client, consult manual of client) |
| Audio | Combo jack for headset usage |
| USB 3.2 Gen1 (5 Gbps) total | 3x Type-A - 5 V / 0.9 A, 4.5 W 1x Type-C - 15 W 1x Type-C - Up to 60 W (PD v.2.0-1.1) power output to client or 4.5 W input |
| USB Type-C cable | 1 Length: 1 m |
| DisplayPort | 1x V 1.2 resolution up to 4,096 x 2,160 @24 Hz / 3,840 x 2,160@30 Hz depending on system and only one connected display |
| VGA | 1x resolution up to 1,920 x 1,200 @60 Hz depending on system and connected display |
| HDMI | 1 |
| HDMI text | Resolution up to 4,096 x 2,160 @24 Hz / 3,840 x 2,160@30 Hz depending on system and only one connected display |
| Ethernet (RJ-45) | 1 10/100/1000 WoL from S3 state (for all mobile clients) WoL from S4 / S5 / G3 depending on Fujitsu mobile clients Launch of PXE for dedicated Fujitsu mobile clients Set the MAC address by the user MAPT from 9th gen |
| Dimensions (W x D x H) | 219 x 75 x 22.9 mm (front) - 26 mm (back) mm |
| Weight | 334 g |
| Order code | S26391-F3327-L100 |



Thunderbolt™ 3 Port Replicator

Technical details

| | |
|------------------------------|--|
| DC-in | 1 (20V/170W required) |
| Power on switch | 1 |
| Audio | 1 Combo jack for headset usage |
| USB 3.2 Gen2 (10 Gbps) total | 1x Type-A - 5 V/ 2.4 A, 12 W 2x Type-A - 5 V/ 0.9 A, 4.5 W 2x Type-C - 5 V/ 1.5 A, 4.5 W charging port 1x Type-C - TBT3 up to 60 W (PD v2.0-1.1), 5-20 V/3.0 A upstream (PC) 1x Type-C - TBT3 up to 15 W (PD v2.0-1.1), 5 V/3.0 A downstream, power output |
| USB Type-A | 1x Type-A - 5 V/ 2.4 A, 12 W 2x Type-A - 5 V/ 0.9 A, 4.5 W |
| USB Type-C cable | 1 Thunderbolt 3 Length: 0.50 m |
| DisplayPort | 2 (up to 2,560 x 1,600) |
| HDMI | 1 |
| Interface Notes | 2x Type-A - 5V/0.9A, 4.5W 1x Type-A - 5V/2.4A, 12W 2x Type-C - 5V, 1.5A/4.5W charging port 1x Type-C - TBT3 up to 60 W (PD v2.0-1.1), 5-20V/3.0A upstream (PC) 1x Type-C - TBT3 up to 15 W (PD v2.0-1.1), 5V/3.0A downstream, power output |
| Kensington Lock support | 1 |
| Ethernet (RJ-45) | 1 (10/100/1000) WoL from S0 to S5 state depending on Fujitsu mobile client PXE launching depending on Fujitsu mobile client User MAC address setting MAPT from 9th gen Downwards compatible to Type C (the client needs to have a Type C interface) |
| Dimensions (W x D x H) | 239 x 80 x 26 mm |
| Weight | 440 g |
| Order code | S26391-F3357-L100 |



Thunderbolt™ 4 Port Replicator

Technical details

| | |
|------------------------------|--|
| DC-in | 1 (20V/170W required) |
| Power on switch | 1 |
| Power on switch | power on and off of dedicated Fujitsu products |
| Audio | 1 Combo jack for headset usage |
| USB 3.2 Gen2 (10 Gbps) total | 1x Type-A - 5 V/ 2.4 A, 12 W 2x Type-A - 5 V/ 0.9 A, 4.5 W 2x Type-C - 5 V/ 1.5 A, 4.5 W charging port |
| USB 4.0 Gen3 (20 Gbps) total | 1x Type-C - TBT4 up to 60 W (PD v2.0-1.1), 5-20 V/3.0 A upstream (PC) 1x Type-C - TBT4 up to 15 W (PD v2.0-1.1), 5 V/3.0 A downstream, power output to client |
| USB Type-A | 1x Type-A - 5 V/ 2.4 A, 12 W 2x Type-A - 5 V/ 0.9 A, 4.5 W |
| USB Type-C cable | 1 Thunderbolt™ 4 Length: 0.70 m |
| DisplayPort | 2 (up to 4,096 x 2,160, 60 Hz), DP 1.4++ Possible resolution: - using 1x DP (5,120 x 2,880, 60 Hz) - using 2x DP (4,096 x 2,160, 60 Hz or 3,840 x 2,160, 60 Hz) |
| HDMI text | 1 x 2.0b (4,096 x 2,160, 60 Hz) |
| Interface Notes | 2x Type-A - 5 V/0.9 A, 4.5 W 1x Type-A - 5 V/2.4 A, 12 W 2x Type-C - 5 V, 1.5 A/4.5 W charging port 1x Type-C - TBT™ 4 up to 60 W (PD v2.0-1.1), 5-20 V/3.0 A upstream (PC), Intel AMT support (vPRO) 1x Type-C - TBT™ 4 up to 15 W (PD v2.0-1.1), 5 V/3.0 A downstream, power output |
| Kensington Lock support | 1 |
| Ethernet (RJ-45) | 1 (10/100/1000) WoL from S0 to S5 state depending on Fujitsu mobile client PXE launching depending on Fujitsu mobile client Intel AMT (vPRO) User MAC address setting MAPT from 10th gen Downwards compatible to Thunderbolt™ 3 and Type-C (the client needs to have a Thunderbolt™ 3 or Type-C interface) |
| LAN / Ethernet (RJ-45) | 1 |
| Dimensions (W x D x H) | 239 x 80 x 26 mm |
| Weight | 440 g |
| Order code | FPCPR401BP |



Thunderbolt™ 3 Port-Replicator for CELSIUS Workstations

Technical details

| | |
|-----------------------------------|---|
| DC-in | 1 (19 V/65 W) |
| Audio: line-in / microphone | 1 |
| Audio: line-out / headphone | 1 |
| USB 2.0 total | 2 |
| USB 3.1 Gen1 (USB 3.0) total | 2 |
| USB Type-C (to PC/Tablet) | 1 Data connection; NO power supply to mobile Workstation |
| DisplayPort | 2x DP 1.2 (1x through from Portrep TypeC, 1x via Portrep internal DP-Splitter; No DP++ support), resolution up to 3,840 x 2,160 |
| VGA | 1x (via Portrep internal DP-splitter) resolution up to 1,920 x 1,200, 16M colors, 60 Hz |
| DVI | 1x (via Portrep internal DP-splitter) resolution up to 1,920 x 1,200, 16M colors, 60 Hz |
| Ethernet (RJ-45) | 1 |
| Dimensions (W x D x H) | 370 x 46 x 22.7 mm |
| Weight | 0.260 kg |
| Order code | S26391-F2249-L100 |
| Order code Port Replicator Bundle | (incl. power supply for port replikator only / separate AC-adapter for mobile Workstation mandatory) |



USB Port Replicator PR09

Technical details

| | |
|---------------------------|---|
| DC-in | 20 V |
| Power on switch | 1 default: ON (PR09 from Rev.:02) |
| Audio | 1 SPDIF (2.0) |
| USB Type-C cable | 1 (5A Gen2) (package content) |
| USB downstream | 7 (4x USB-A & 3x USB-C) |
| USB upstream | via USB Type-C cable (1m) |
| DisplayPort | 2 (DP1.2a as Dualmode DP++) |
| USB power delivery | ver 3.0 |
| USB Type-A 3.1 Gen1 (DFP) | 4 |
| USB Type-C (UFP) | 1 w/ USB PD (60 W) |
| USB Type-C 3.1 Gen2 (DFP) | 3 thereof 1x BC1.2 w/ 10.5 W |
| Kensington Lock support | yes |
| LAN / Ethernet (RJ-45) | 1 |
| LED | On/Off switch (blue), USB Power Delivery (amber), USB connection (green), LAN traffic, rear side (green/yellow) |
| Compatibility | With all DisplayLink based USB Port Replicators |
| Dimensions (W x D x H) | 200 x 97.6 x 29 mm |
| Weight | 340 g (device only w/o AC-Adapter) |
| Order code | S26391-F6007-L500 |



More information

Fujitsu products, solutions & services

In addition to FUJITSU Accessory, Fujitsu provides a range of platform solutions. They combine reliable Fujitsu products with the best in services, know-how and worldwide partnerships.

Fujitsu Portfolio

Build on industry standards, Fujitsu offers a full portfolio of IT hardware and software products, services, solutions and cloud offering, ranging from clients to datacenter solutions and includes the broad stack of Business Solutions, as well as the full stack of Cloud offering. This allows customers to leverage from alternative sourcing and delivery models to increase their business agility and to improve their IT operation's reliability.

Computing Products

www.fujitsu.com/global/products/computing/

Software

www.fujitsu.com/software/

More information

Learn more about FUJITSU Accessory, please contact your Fujitsu sales representative or Fujitsu Business partner, or visit our website. www.fujitsu.com/emeia/products/computing/peripheral/accessories

Fujitsu green policy innovation

Fujitsu Green Policy Innovation is our worldwide project for reducing burdens on the environment.

Using our global know-how, we aim to contribute to the creation of a sustainable environment for future generations through IT.

Please find further information at <http://www.fujitsu.com/global/about/environment>



**Green
Policy
Innovation**

Copyrights

All rights reserved, including intellectual property rights. Designations may be trademarks and/or copyrights of the respective owner, the use of which by third parties for their own purposes may infringe the rights of such owner. For further information see <http://www.fujitsu.com/emeia/resources/navigation/terms-of-use.html>

Copyright 2021 Fujitsu Technology Solutions GmbH

Disclaimer

Technical data is subject to modification and delivery subject to availability. Any liability that the data and illustrations are complete, actual or correct is excluded. Designations may be trademarks and/or copyrights of the respective owner, the use of which by third parties for their own purposes may infringe the rights of such owner.

CONTACT

Fujitsu Technology Solutions GmbH
Website: www.fujitsu.com
2021-09-21 EM-EN

All rights reserved, including intellectual property rights. Designations may be trademarks and/or copyrights of the respective owner, the use of which by third parties for their own purposes may infringe the rights of such owner. For further information see <http://www.fujitsu.com/emeia/resources/navigation/terms-of-use.html>
Copyright 2021 Fujitsu Technology Solutions GmbH