

Rittal – The System.

Faster – better – everywhere.

Component shelf, pull-out for TS, SE, PC, IW – IW 6902.960

Date : Dec 16, 2020

ENCLOSURES

POWER DISTRIBUTION

CLIMATE CONTROL

IT INFRASTRUCTURE

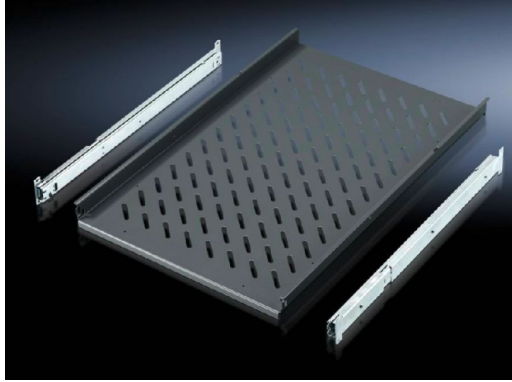
SOFTWARE & SERVICES

FRIEDHELM LOH GROUP



Component shelf, pull-out for TS, SE, PC, IW – IW 6902.960

created: 16.12.2020 on www.rittal.com/com-en



Product description

Description:	For direct mounting on the vertical TS enclosure section.
Applications:	On the vertical TS, SE enclosure section
Material:	Sheet steel
Colour:	RAL 7015
Supply includes:	2 telescopic slides
Note:	For enclosures without mounting plate
Note on Model No.:	May also be installed in 800 mm deep enclosures based on TS (pull-out rear attachment).

Product features

To fit:	Enclosure type: TS Enclosure type: PC Enclosure type: IW Width: = 600 mm Depth: = 600 mm Depth: = 800 mm
Support area:	Width: 465 mm Depth: 545 mm
Load capacity:	30 kg surface load, static

Packs of:	1 pc(s).
Weight/pack:	7.8 kg
Copper weight (kg per piece):	0
EAN:	4028177289864
Customs tariff number:	94039010
ETIM 7.0:	EC002620
ETIM 6.0:	EC002620
eCl@ss 8.0/8.1:	27189261
eCl@ss 6.0/6.1:	27189261
Product description:	IW Component shelf, pull-out, for TS, SE, PC, IW, for enclosure depth 600 mm