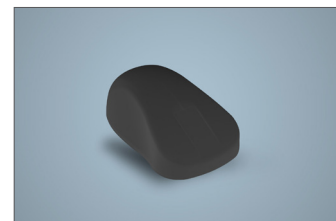


WIRELESS OPTICAL HYGIENE MOUSE WITH TOUCH SCROLL SENSOR

AK-PMH21 SERIES MEDICAL KEY



FEATURES & BENEFITS

- + Ergonomic Hygiene Mouse for Wipe Disinfection
- + Clinical Wipe Disinfection with all common Disinfectants according to German Guidelines VAH/DGHM
- + Precise Cursor & Scroll Control
- + 2.4 GHz Wireless Transmission
- + Shared single dongle together with the wireless keyboards
- + Wake Up from power saving mode via motion
- + Easy to Use Touch Scroll Sensor
- + Fully Sealed for Protection Class IP68
- + 1000 dpi optical system, perfect for shiny surfaces (e.g. Corian)
- + For left and right handers
- + German Brand Product

TECHNICAL DATA



Compatibility	x		All operating systems supporting USB
Temperature Range	x		Storage -20° to +60°C; Operation 0° to +50°C
Silicone Membrane	x		Fully Sealed IP68
Interface	x		USB (Funk-Dongle) / Wireless 2.4 GHz
Supply Voltage	x		3 V +5%/-10% via 2 AAA batteries
Current Consumption	x		Max. 10 mA (USB Low Power Device)
Sleep Mode	x		After approx. 20 sec. without operating; Wake Up by motion
Resolution	x		Optical, 1000 dpi
Dimensions	x		Approx. 114 x 62 x 37 mm
Weight	x		Approx. 93 g
Keys	x		2 Mouse Keys, Touch Scroll Sensor
Key Travel	x		Approx. 1 mm
Agency Approvals	x		CE, RoHS, Test Report FCC, EN-60601-1-2:2015 IEC 4th Edition*

*No Medical Device acc.to MDR 2017/745 EU

PART NO. / ORDER NO.

Example: Mouse AK-PMH21 wireless, IP68, white	AK-PMH21OS-FUS	-	W	-	
Wireless, fully sealed, IP68, white	AK-PMH21OS-FUS	-	W	-	
Wireless, fully sealed, IP68, black	AK-PMH21OS-FUS	-	B	-	

Identifier z Version/Option	Identifier y Color	
Version: wireless FUS = Wireless, fully sealed, protection class IP68	W = White B = Black	