

# PHILIPS

## LCD monitor

### Business Monitor

4000 series

27" (68.5 cm)

2560 x 1440 (QHD)

27B2N4500



## Redefining workflow productivity

Speed through daily tasks in comfort with this monitor's SoftBlue technology, Quad HD resolution and 120 Hz refresh rate. Additionally, SmartErgoBase adds an ergonomic touch to the monitor's feature list.

### Designed for the way you work

- Built-in stereo speakers for multimedia
- SmartErgoBase enables user-friendly ergonomic adjustments
- Eyesafe-certified blue light protection and colour accuracy
- Less eye fatigue with Flicker-Free technology
- EasyRead mode for a paper-like reading experience
- SoftBlue Technology: for comfortable viewing

### Easy to experience

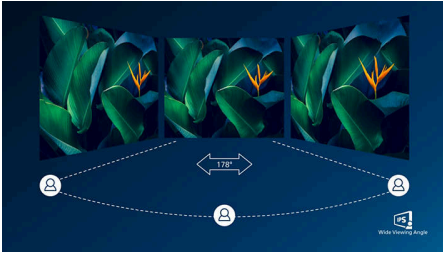
- VESA mount for convenience
- HDMI ensures universal digital connectivity

### Superb Picture Quality

- 120 Hz refresh rates for ultra-smooth images
- IPS LED wide view technology for image and colour accuracy
- Crystal clear images with Quad HD 2560 x 1440 pixels

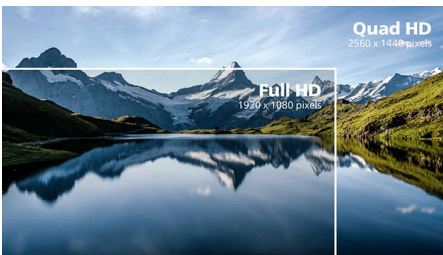
# Highlights

## IPS technology



IPS displays use an advanced technology that gives you extra-wide viewing angles of 178/178 degrees, making it possible to view the display from almost any angle. Unlike standard TN panels, IPS displays give you remarkably crisp images with vivid colours, making them ideal not only for Photos, movies and web browsing, but also for professional applications that demand colour accuracy and consistent brightness at all times.

## CrystalClear images



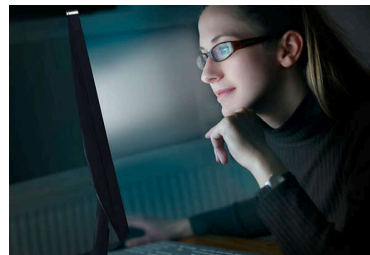
These Philips screens deliver CrystalClear, Quad HD 2560 x 1440 or 2560 x 1080 pixel images. Utilising high performance panels with a high-density pixel count enabled by high bandwidth sources, these new displays will make your images and graphics come alive. Whether you are a demanding professional requiring extremely detailed information for CAD-CAM solutions using 3D graphic applications, or a financial wizard working on huge spreadsheets, Philips displays will give you CrystalClear images.

## 120 Hz fast refresh



For gaming and video performance, you demand display with lag free, ultra-smooth images. This Philips display redraws the screen image up to 120 times per second, much faster than a standard display. A lower frame rate can make enemies appear to jump from spot to spot on the screen, making them difficult targets to hit. With 120 Hz frame rate, you get those critical missing images on the screen which shows enemy movement in ultra-smooth motion so you can easily target them.

## SoftBlue Technology



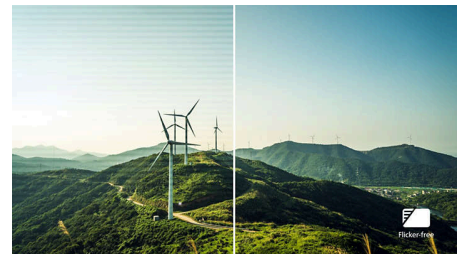
SoftBlue LED technology, combined with the monitor's low blue light panel, is an effective solution for reducing the adverse health effects caused by high exposure to blue light. In this monitor's panel, the ratio of light is reduced by nearly 50 percent, while the SoftBlue LED technology works simultaneously by reducing harmful blue light rays emitted from the screen. Furthermore, the SoftBlue LED technology is tested and certified by TUV Rheinland Eyesafe® for its effectiveness in reducing blue light emissions.

## Built-in stereo speakers



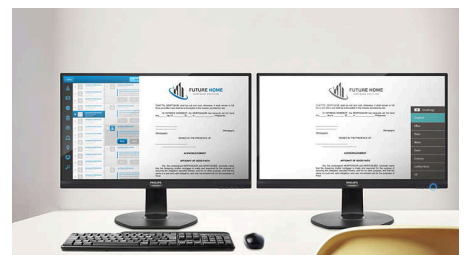
A pair of high-quality stereo speakers built into a display device. They may be visible front firing, or invisible down firing, top firing, rear firing etc. depending on model and design.

## Flicker-Free technology



Due to the way brightness is controlled on LED-backlit screens, some users experience flicker on their screen which causes eye fatigue. Philips Flicker-Free technology applies a new solution to regulate brightness and reduce flicker for more comfortable viewing.

## EasyRead mode



EasyRead mode for a paper-like reading experience



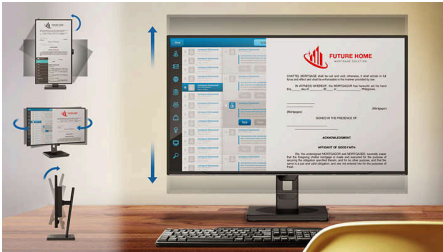
## Highlights

### TUV Rheinland Eyesafe - RPF<sup>®</sup> 40



Philips display meets the TUV Rheinland Eyesafe<sup>®</sup> standard to truly protect you from long exposure to blue light. The always-on blue light filter not only helps reduce digital eye strain, but also guarantees colour integrity.

### SmartErgoBase



The SmartErgoBase is a monitor base that delivers ergonomic display comfort and provides cable management. The base can swivel, tilt and

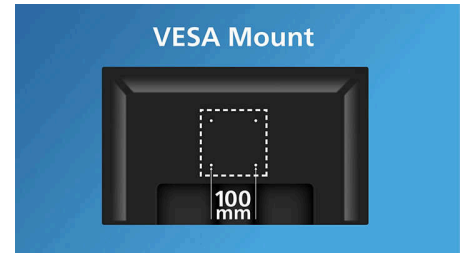
rotate to various angles to ensure maximum comfort. The height-adjustable stand guarantees the optimal viewing level, reducing the physical strains of a long workday, while cable management reduces cable clutter and keeps the workspace neat and professional.

### HDMI Ready



An HDMI-ready device has all the required hardware to accept High-Definition Multimedia Interface (HDMI) input. An HDMI cable enables high-quality digital video and audio to be transmitted over a single cable from a PC or any number of AV sources (including set-top boxes, DVD players, A/V receivers and video cameras).

### VESA mount for convenience



VESA mount for convenience



Wide Viewing Angle



Quad HD



120Hz



SoftBlue Technology



Built-in Speaker



Flicker-free

## Specifications

### Picture/Display

**Panel Size:** 27 inch/68.5 cm  
**Aspect ratio:** 16:9  
**LCD panel type:** IPS technology  
**Backlight type:** W-LED system  
**Pixel pitch:** 0.2331 x 0.2331 mm  
**Brightness:** 350 cd/m<sup>2</sup>  
**Display colours:** 16.7 M (True 8 bits)  
**Colour gamut (typical):** NTSC 114%, sRGB 125%\*  
**Contrast ratio (typical):** 1500:1  
**SmartContrast:** 50,000,000:1  
**Response time (typical):** 4 ms (Grey to Grey)\*  
**Viewing angle:** 178° (H)/178° (V), @ C/R > 10  
**Picture enhancement:** SmartImage  
**Maximum resolution:** 2560 x 1440 @ 120 Hz  
**Effective viewing area:** 596.74 (H) x 335.66 (V) mm  
**Scanning Frequency:** 30-190 kHz (H)/48-120 Hz (V)  
sRGB  
SoftBlue  
Flicker-free  
**Pixel Density:** 109 PPI  
**Display Screen Coating:** Anti-Glare, 3H, Haze 25%  
EasyRead  
Adaptive sync  
EyeSafe

### Connectivity

**Signal Input:** HDMI 2.0 x 2, DisplayPort 1.2 x 1  
**Sync Input:** Separate Sync, Sync on Green  
**Audio (In/Out):** Audio out  
**HDCP:** HDCP 1.4 (HDMI/DisplayPort), HDCP 2.2 (HDMI/DisplayPort)  
**USB Hub:** USB3.2, Gen1, 5G, upstream: 1 x USB-B, downstream: USB-A x 3 (with x 1 fast-charge B.C 1.2), USB-C x 1 (data, 15 W)

### Convenience

**Built-in Speakers:** 2 W x 2  
**Plug and Play Compatibility:** DDC/CI, Mac OS, sRGB, Windows 11/10  
**User convenience:** SmartImage, Input, Brightness, Menu, Power On/Off  
**OSD Languages:** Brazil Portuguese, Czech, Dutch, English, French, Finnish, German, Greek, Hungarian, Italian, Japanese, Korean, Portuguese, Polish, Russian, Simplified Chinese, Spanish, Swedish, Traditional Chinese, Turkish, Ukrainian

**Other convenience:** Kensington lock, VESA mount (100 x 100 mm), Earphone hook  
**Control software:** SmartControl

### Stand

**Height adjustment:** 150 mm  
**Pivot:** -/+90 degree  
**Swivel:** -/+ 180 degree  
**Tilt:** -5/30 degree

### Power

**ECO mode:** 12.7 W (typ.)  
**Power supply:** Built-in, 100–240 VAC, 50–60 Hz  
**Off mode:** 0.3 W (typ.)  
**On mode:** 14.94 W (typ.) (Energy Star test method)  
**Standby mode:** 0.3 W (typ.)  
**Power LED indicator:** Operation - White, Standby mode - White (flashing)  
**Energy Label Class:** C

### Dimensions

**Packaging in mm (W x H x D):**  
730 x 445 x 139 mm  
**Product without stand (mm):** 614 x 371 x 59 mm  
**Product with stand (max height):**  
614 x 436 x 231 mm

### Weight

**Product with packaging (kg):** 9.45 kg  
**Product with stand (kg):** 6.79 kg  
**Product without stand (kg):** 5.05 kg

### Operating conditions

**Altitude:** Operation: +12,000 ft (3658 m), Non-operation: +40,000 ft (12,192 m)  
**Temperature range (operation):** 0°C to 40 °C  
**Relative humidity:** 20%-80 %  
**Temperature range (storage):** -20°C to 60 °C  
**MTBF (demonstrated):** 70,000 hrs (excluded backlight)

### Sustainability

**Environmental and energy:** PowerSensor, LightSensor, Energy Star, EPEAT\*, RoHS  
**Post-consumer recycled plastic:** 85%+OBP 5%  
**Recyclable packaging material:** 100 %  
**Specific Substances:** PVC/BFR free housing

### Compliance and standards

**Regulatory Approvals:** CB, CE Mark, ETL, CEC, TUV/GS, TUV Ergo, TCO Certified, TCO Certified Edge, EAC, EAEU RoHS, MEPS, PSB, UKCA, EMF, FCC, ICES-003, TÜV Rheinland Low Blue Light (Hardware Solution), eyesafe<sup>®</sup> CERTIFIED 2.0

### Cabinet

**Finish:** Texture  
**Foot:** Silver  
**Front bezel:** Charcoal  
**Rear cover:** Charcoal

### What's in the box?

**Cables:** HDMI cable, DisplayPort cable, Power cable  
**Monitor with stand**  
**User Documentation**



\* "IPS" word mark / trademark and related patents on technologies belong to their respective owners.  
\* Response time value equal to SmartResponse  
\* sRGB Area based on CIE1931, NTSC Area based on CIE1976.  
\* Activities such as screen sharing and online streaming over the Internet can impact your network performance. Your hardware and network bandwidth will determine the overall audio and video quality.  
\* When calculating energy costs saving from PowerSensor, both USB and Power delivery are excluded.  
\* EPEAT rating is valid only where Philips registers the product. Please visit <https://www.epeat.net/> for registration status in your country.  
\* The monitor may look different from feature images.  
\* The products and accessories listed on this leaflet may differ by country and region.