



ECOPROFILE

Surface Pro 9 (Intel/Wifi)



Our commitments

Microsoft is committed to becoming carbon negative, water positive, and zero waste by 2030¹. Surface plays a key role in helping Microsoft achieve these goals, so we are working to reduce the environmental impacts of our Surface products. Our approach embeds sustainability into the design, manufacturing, distribution, use, and end-of-life management of our devices. We will continue to innovate to meet our ambitious targets and we will share our progress along the way.

We need to act quickly to meet our 2030 goals. That's why Surface is driven by the following priorities:

1. Reducing carbon emissions
2. Designing with circularity in mind
3. Building with integrity



Transparency to impact

We have made significant investments to improve our life cycle assessment (LCA) approach. That's because quantifying the environmental impacts of our products is critical to make and track progress toward our carbon reduction goal. We use LCA to identify and prioritize opportunities to minimize the carbon footprint across the full life cycle of our devices. We'll continue to learn from this work and apply new insights to each product we design, make, and ship to customers.

The life cycle assessment² of Surface Pro 9 includes production of one device, distribution to customer, 4.5 years of product use³, and end-of-life management. The estimated annual electricity consumption⁴ associated with product use is 16.6 kWh per year.

The Production life cycle stage includes extraction of raw materials, upstream materials preparation, electronic component manufacturing, subassembly manufacturing and assembly, and final assembly.

Calculations are based on the US configuration of Surface Pro 9 12th Gen Intel® Core™ i5, WiFi, 8GB RAM, 256GB SSD. Included in the assessment are the device, power supply unit, and packaging. Other accessories are not included.

LCA methodology details are included in the Resources and notes page of this document.



Reducing carbon emissions

Surface is helping achieve Microsoft's commitment to become carbon negative by improving efficiency in our operations, devices, software and supply chain.

Carbon footprint² of
1 year of computing
using Surface Pro 9 (Wifi)

40

kg CO₂eq

assuming a 4.5-year
total use period³

Surface Pro 9
energy consumption is

55%

less than the current
ENERGY STAR[®] computer
specification requirement⁴

Surface Pro 9 is our
most repairable

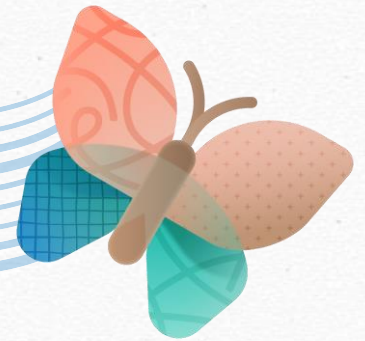
Pro to date. Repairing a device
rather than replacing it can
extend its life, reducing overall
carbon emissions.

We power key
distribution centers with

100%

renewable energy⁶

Carbon aware
Windows updates⁷



What we've done

Low carbon product design

Sustainability integrated in design and manufacturing

We achieve reductions in the carbon footprint of Surface by implementing a structured ecodesign approach that balances design decisions based on technical, economic, and environmental considerations. Data drives our progress.

We are working with suppliers to build action plans of emission reduction activities leading up to 2030.

A repairable device can stay in use longer, delaying the need to replace it. Manufacturing a new device accounts for most of its carbon footprint, eclipsing the impact of electricity use over several years. Extending the life of products through reparability is part of our carbon reduction strategy.

Design improvements are dependent on many factors including available materials and technology. Carbon reduction progress may not be linear and we may see emissions rise or fall year-over-year. Challenges will remain but we are committed to improving and sharing our learnings.

Supply chain reductions

Improvements in shipping & logistics

Microsoft is working to meet delivery demand without increasing our carbon footprint.

We are doing this by:

- Consolidating orders to reduce the number of shipments we make to stores and customers.
- Cutting back on expedited shipping when possible, decreasing the overall emissions from shipping our products.
- Powering key distribution centers with 100% renewable energy.
- Offering a lower carbon shipping option to Microsoft Stores customers. This options allows customers to avoid air freight, a higher carbon shipping mode, by selecting ground shipment when ordering from Microsoft.
- Participating in EPA's SmartWay initiative, a partnership that aims to better measure and improve freight transportation efficiency.

Energy efficiency

Achieving high efficiency

All Microsoft Surface computers are ENERGY STAR® certified and designed to be energy efficient while delivering the performance customers expect.

Surface Pro 9 is estimated to use 55% less energy than the current ENERGY STAR® computer specification requirement⁴, reflecting energy savings without sacrificing features or functionality.

Windows and apps

Carbon aware updates

Innovative software can lower a device's energy use and carbon footprint.

Microsoft and third parties work to improve Windows and applications so that you need lower power to operate your device in the office or at home. Surface is designed to enable these software features and is the best platform to experience games that support sustainability.

Windows Update has a new [carbon aware feature](#) that will schedule update installations at specific times of day, which we expect will result in lower carbon emissions.

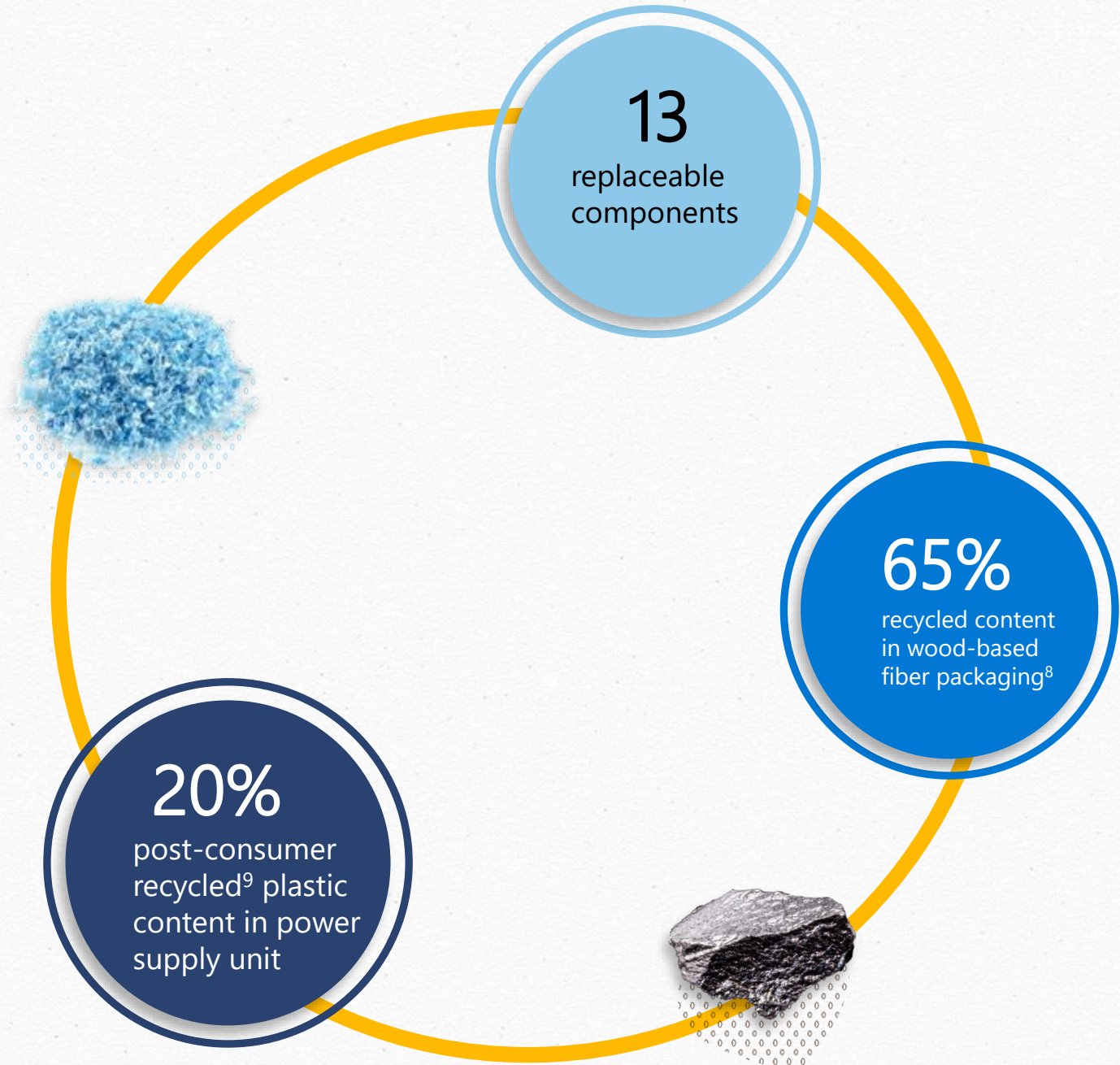
Circular by design

The linear 'take, make, and waste' approach is no longer viable. That's why we design products with circularity in mind, meaning we follow a 'reduce, reuse, and recover' model to minimize waste and maximize the reuse of resources.

Surface Pro 9 is our

most repairable

Surface Pro device to date.



Clockwise from the top of the circle, images are aluminum and plastic.

What we've done

Repairability

Surface Pro 9 is the most repairable Surface Pro to date

Microsoft designs devices with repairability in mind to ensure our devices continue to perform well and last longer. We have a growing Authorized Service Provider (ASP) network to make repair services available to more customers in more locations.

Surface Pro 9 parts replaceable by an ASP include:

- SSD (storage)
- SSD door
- Display
- Motherboard (includes processor and memory)
- Battery
- Surface Connect charging port
- Speaker
- Camera front & rear
- Camera deck
- Power & Volume button
- Thermal module
- Back cover (Bucket)
- Kickstand

Replacement power supply units for Surface Pro 9 are available from the [Microsoft Store](#) and other retailers.

[Surface help & learning](#) provides information about Surface maintenance, troubleshooting, support and repair.

Recyclability and reusability

Evaluating recyclability

By 2025, our goal is for our packaging to contain zero single-use plastics and, by 2030, will be 100% recyclable.

Microsoft supports multiple reuse, refurbishment, and recycling programs around the world that cover our consumer devices, batteries, and packaging. Visit our [End-of-life management and recycling](#) page for details.

Trade in your used laptop, tablet, phone, or game console. Learn more: [Microsoft Trade In & Recycling Program - Microsoft Store](#)

Designing with recycled materials

Qualifying recycled materials

The extraction and processing of raw materials causes negative environmental and social impacts. Microsoft is working with suppliers to qualify and source recycled materials. At the same time, we are designing products to increasingly use recycled materials.

The power supply unit that ships with Surface Pro 9 includes 20% post-consumer recycled⁹ content.

Building with integrity

Responsibly made

Our values of integrity, accountability, and respect provide the foundation for responsible sourcing. Engaging with our suppliers around issues of human rights, sustainability, and ethics helps us understand and mitigate risk, increase transparency, build capacity, and create shared value for society. Read our [Responsible Sourcing Report](#) for more information.

We take a precautionary approach to [substance management](#). We follow legislative developments and research regarding chemical impacts on health and environment and update our specifications with new product and manufacturing substance restrictions to address risks.

Labels and certifications

Surface Pro 9 is EPEAT registered in many countries at the Gold level, the highest available rating. EPEAT criteria cover topics including reduction of carbon transparency, energy efficiency, material selection, product design for repair and longevity, chemicals of concern, distribution, packaging, responsible end-of-life management, responsible manufacturing, and corporate performance and reporting. For more information, visit the [EPEAT registry](#).

Surface Pro 9 is ENERGY STAR® certified. Visit the [ENERGY STAR website](#) for more information.

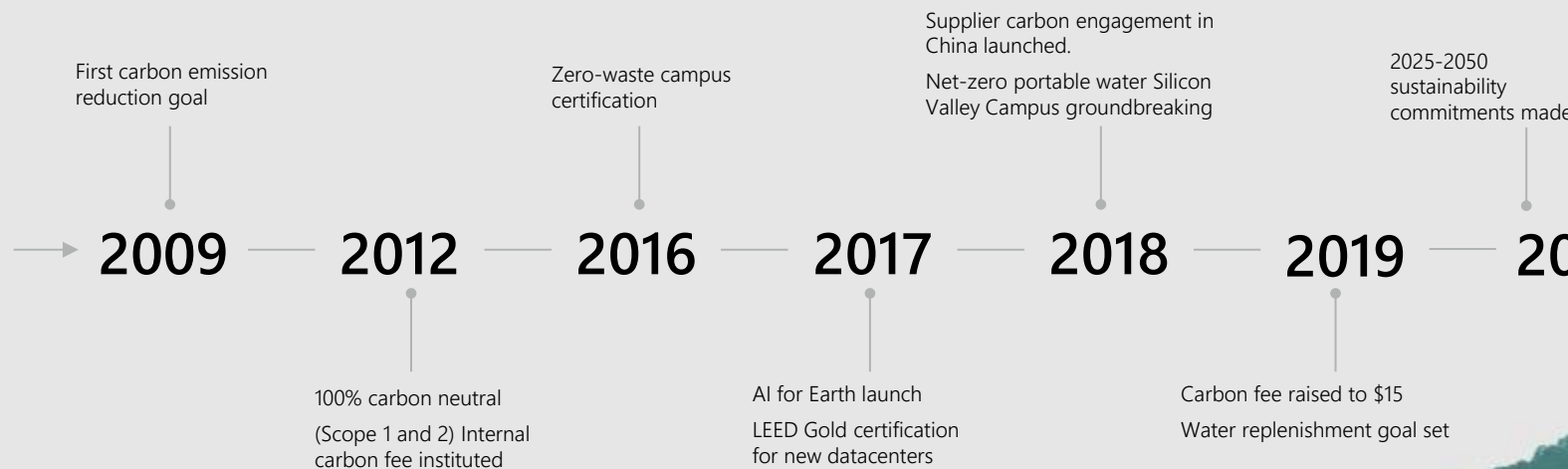
Surface Pro 9 is certified according to TCO Certified. TCO Certified is a sustainability certification for IT products focused on promoting environmental and social responsibility. Certifications cover a broad set of categories. For a list of Microsoft's TCO certified products and more information on the TCO Certified program, visit the [TCO Certified website](#).



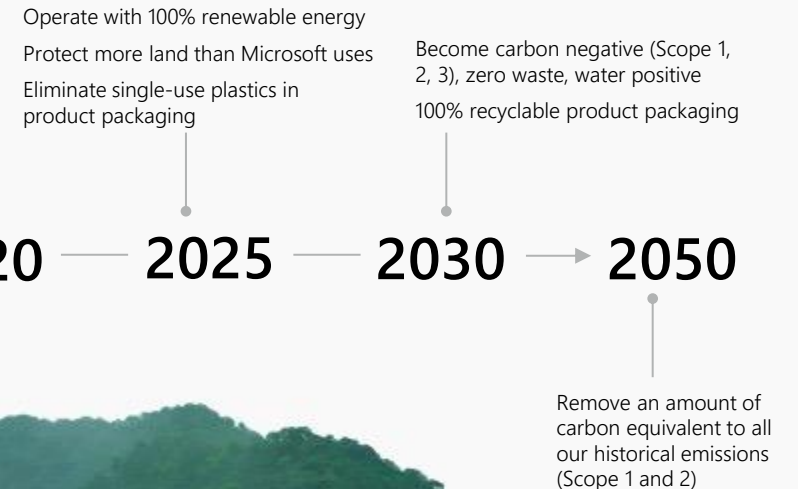
More to come

Microsoft made commitments to be carbon negative, water positive, and zero waste by 2030¹. We will also continue to be transparent about our progress, our challenges, and our learnings to help others on their journey.

Our history 2009-2019



Our commitments 2020-2050



Resources and notes

- 1 For more information on Microsoft's sustainability commitments, approach, and progress visit our [corporate sustainability website](#) and read our annual [Sustainability Report](#).
- 2 The product carbon footprint and other environmental impacts are calculated in accordance with ISO 14040 and ISO 14044 using Microsoft Devices LCA Methodology v2.1 (available with our [Ecoprofiles](#)) and are not directly comparable to results calculated using Methodology v1.0-2.0 nor to results calculated by other companies. Our new methodology enables us to model complex electronic products with greater accuracy, transparency, and supply chain representativeness. The Life Cycle Inventory (LCI) data is based on our own measurements, collected from suppliers, and content supplied by Makersite and ecoinvent along with other internationally available LCI databases. Uncertainties are inherent in all LCA methodologies. We continually work to improve our data and models, and our results may be updated to reflect these improvements.
LCA results are reported for a representative configuration of the product. The production result may vary by hardware configuration. The transport, product use, and end of life management results may vary by region. The use phase carbon footprint for devices used in Europe sees a 27% reduction, while Asia sees a 104% increase, compared to the US reference scenario. The carbon footprint is reported as carbon dioxide equivalent (CO₂eq), a measure of global warming potential that converts all greenhouse gases to the equivalent amount of carbon dioxide with the same global warming potential over 100 years.
- 3 The product use period is an estimate of average product lifetime for the purpose of the life cycle assessment (LCA). We estimate the use period based on reliability and reparability of the device. Disclosure of the use period estimated for LCA does not imply a guarantee or warranty.
- 4 The estimated annual electricity consumption and energy efficiency are calculated using ENERGY STAR® Computer Specification version 8.0. The sample used for the energy testing represents the most energy-intensive configuration. Testing is not conducted on every configuration; therefore, the results reflect a worst-case scenario. Energy efficiency may improve over time with software updates.
- 5 Equivalency to passenger vehicle miles is calculated using US EPA's [Greenhouse Gas Equivalencies Calculator](#).
- 6 More information on how we're working to reduce our distribution footprint can be found in our [Sustainability Report](#).
- 7 Carbon aware Windows Update is available starting with Windows 11, version 22H2.
- 8 Packaging configurations may vary for consumer vs. commercial applications and by configuration of the device and power supply unit. We report the minimum percentage of recycled content in wood-based fiber packaging across all configurations. Some configurations may contain a higher percentage of recycled content in wood-based fiber packaging.

Resources and notes

- 9 Recycled content calculated based on mass of recycled material as a percentage of total device, part, or material mass. Recycled content in the product is based on validation performed by Underwriter Laboratories, Inc. using Environmental Claim Validation Procedure for Recycled Content, UL 2809-2, either First Edition, April 6, 2023, or Second Edition, November 7, 2023.

