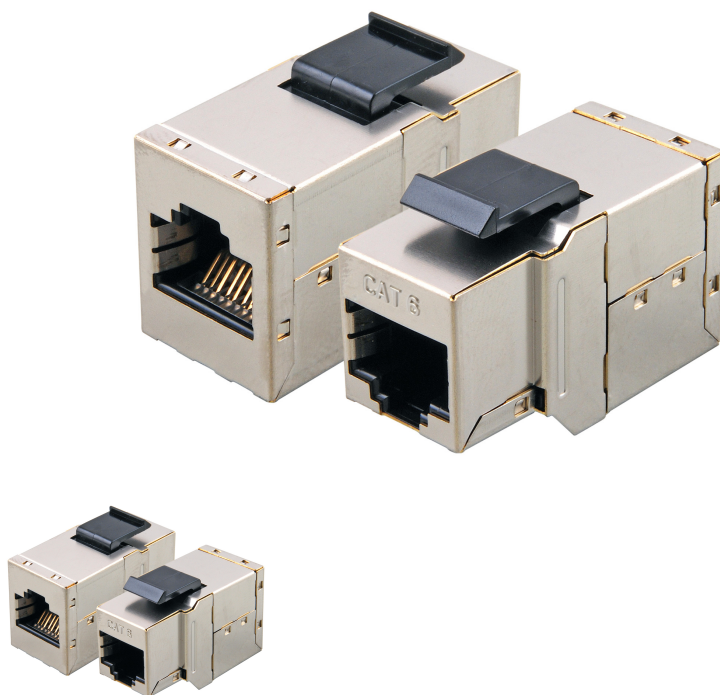


DATASHEET

Keystone Snap-In Adapter RJ45 STP, Cat.6



General data

Snap-In mounting (Keystone)
 Cat.6
 Connecting adapter for patch cables
 2x RJ45 connectors shielded
 Allocation: 1:1
 Metal housing
 Snap-in spring: plastic

Allgemeine Daten

Type of connector	2x RJ45
Type of fastening	Engage (snap)
Model	jack/jack
Category	6

Mechanische Eigenschaften

Mating cycles	≥ 750
Construction type	straight

This datasheet was created automatically on 31-08-2023 . Technical changes reserved.



DATASHEET

Keystone Snap-In Adapter RJ45 STP, Cat.6

Umgebungsbedingungen

Temperature Range (Operation)	0 - 70 °C
Temperature Range (Storage)	-40 - 80 °C

Available variants

ArtNr.	Bezeichnung	screened
37486.1	Keystone Snap-In Adapter RJ45 STP, Cat.6	True

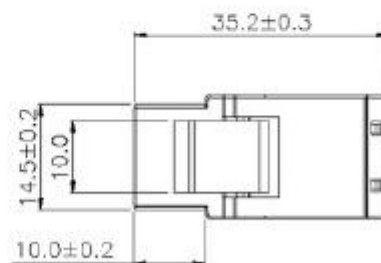
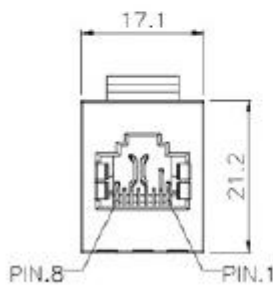
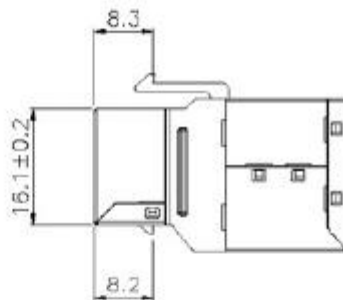
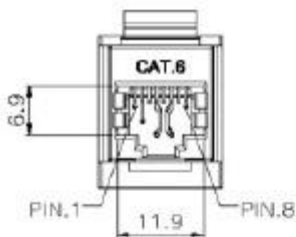
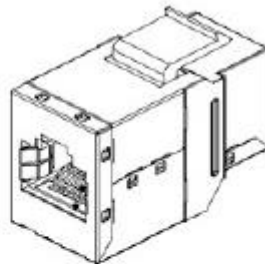
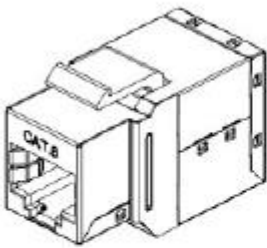
Drawings

This datasheet was created automatically on 31-08-2023 . Technical changes reserved.



DATASHEET

Keystone Snap-In Adapter RJ45 STP, Cat.6



This datasheet was created automatically on 31-08-2023 . Technical changes reserved.

