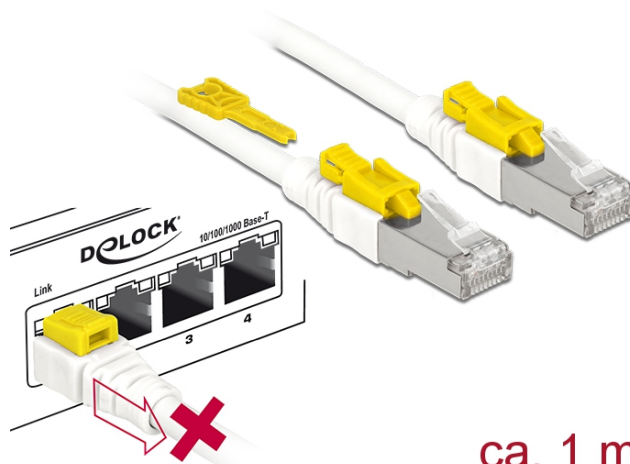




Delock Cable RJ45 Secure Cat.6A 1 m

Description

This network cable by Delock is used to connect different network devices, such as a patch panel to a switch. The connector can be locked in the RJ45 jack, and the cable is protected against removal. At the same time, the socket is blocked and secured from unauthorised use. This allows control of physical access to the network in safety-critical areas, e.g. in public places or data centers. To open the lock, the included tool is required.



ca. 1 m

Specification

- Connectors:
 - 1 x RJ45 male >
 - 1 x RJ45 male
- 1:1 connected
- Cat.6A specification
- Shielded (S/STP)
- Copper cable
- LSOH (halogen free)
- Cable gauge: 26 AWG
- Cable diameter: ca. 7 mm
- Colour: white
- Length incl. connectors: ca. 1 m

System requirements

- One free RJ45 jack

Package content

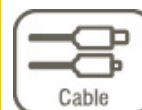
- Patch cable
- RJ45 Secure tool

Item no. 85331

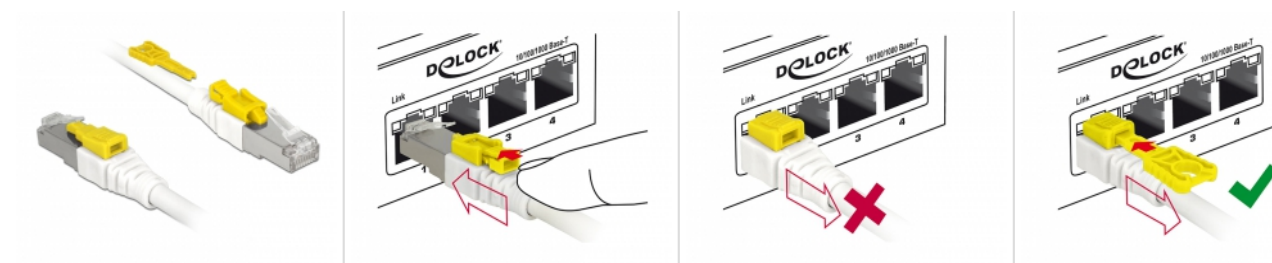
EAN: 4043619853311

Country of origin: China

Package: Poly bag



Images





General

Specification: Cat. 6A

Interface

Connector 1: 1 x RJ45 male

Connector 2: 1 x RJ45 plug

Physical characteristics

Cable colour: white

Cable diameter: 7 mm

Cable length incl. connector: 1 m

Conductor material: copper

Conductor gauge: 26 AWG

Shielding: S/STP