

Creativity meets productivity in CorelDRAW Graphics Suite: your fully-loaded, professional design toolkit for delivering breathtaking vector illustration, layout, photo editing, and typography projects with incredible efficiency.

“The most versatile digital design tool”

– Leonardo Cardona Perez
Vector illustrator, Colombia



Why subscribe to CorelDRAW Graphics Suite?



Produce unique illustrations, signage, logos, and more—on Windows or Mac—and on-the-go with the CorelDRAW[®] Web.



Deliver exceptional results in less time, thanks to incredibly productive tools for any type of output.



Import and export a variety of project assets based on client-provided files or needs, thanks to extensive file compatibility.

A budget-friendly subscription provides incredible ongoing value with instant, guaranteed access to exclusive new features, apps, and content, and support for the latest technologies.



“Powerful yet easy to use, CorelDRAW is my vector illustration toolkit of choice!”

— OCTO, Brazil

Who is it for?

Enjoyed by diverse designers, industries, and businesses worldwide, from marketing, commerce and sign making, to engineering, manufacturing, and more.

Graphics and creative professionals

Design logos, brochures, sales and marketing materials, training tools, and other detailed visuals for web or print.

Production professionals

Produce signage, large-format prints, vehicle wraps, apparel and textile design, embroidery, schematics, engraving, and much more.

Occasional graphics users in businesses

Create or manipulate visually rich projects for in-house use, from web graphics and sales presentations, to sell sheets, and visual aids.

Competitive advantages

All-in-one design and layout

Enjoy integrated functionality for graphic design and layout in one application.

Flexible, affordable purchasing

Subscribe to a full suite of professional graphic design applications for about the cost of a competitor’s single-application subscription. Or, choose a perpetual license to own your software outright.

FREE PANTONE[®] support

Ensure your colors are accurate for output with integrated access to PANTONE[®] color libraries at no additional cost.

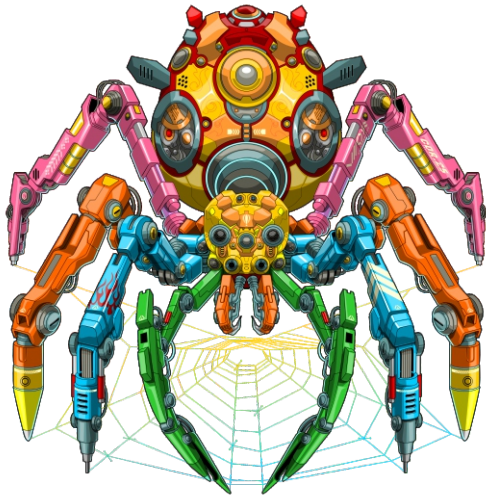
Native OS experience

Create how you’re used to creating on Windows or Mac, with award-winning software that’s been built from the ground up for your platform of choice.

Easy to learn & use

Create confidently with a personalized in-app learning experience, bringing relevant tips, tutorials, and practice projects to your fingertips, based on the tools you select, how you work, and what you want to see.

What's new in CorelDRAW Graphics Suite 2025?



Create beyond limits with CorelDRAW Graphics Suite 2025, packed with new features, content, and enhancements to propel your productivity into hyper speed.

- Expand your artistic universe with CorelDRAW Web, a powerful browser-based version of CorelDRAW for flexible creativity. Available exclusively to subscribers, CorelDRAW Web offers the full CorelDRAW experience in the cloud, enabling you to design without limitations, beyond the desktop.
- Accelerate your creativity with a more powerful Painterly Brush tool, now featuring additional brush controls, and improved compatibility with other tools. What's more, subscribers get exclusive access to 50 additional free brushes, unlocking new galaxies of artist expression.
- New Print-to-PDF capabilities in CorelDRAW and Corel PHOTO-PAINT streamline your workflow by eliminating the need for additional software and steps.
- Plus, enjoy the latest performance and quality improvements, direct access to additional Google Fonts, and advanced security upgrades for your peace of mind.

Compare purchase options

Feature	Subscription	One-time purchase
Full featured Enjoy exclusive cloud-based features and workflows.	✓	—
Latest and greatest Instant access to the latest updates at no extra cost.	✓	—
Budget-friendly Lowest upfront cost and the flexibility to stop paying for a defined period as your software needs change.	✓	—
Ongoing support Guaranteed support for the latest operating systems, devices, and technologies.	✓	Quality updates for a limited time
Product ownership Pay once to own and use the software version for as long as you choose.	—	✓

Looking for a detailed feature comparison? [Compare](#)

Core features

Vector illustration

Turn basic lines and shapes into complex works of art and create curves with a robust drawing toolbox for professional design. Add creative effects with tools like Contour, Envelope, Mesh Fill, Impact, Painterly brush, and more.

Page layout

Find all the tools you need to create layouts for brochures, multi-page documents, and more. Toggle between single-page and multi-page editing for creative freedom to work the way you want.

Photo editing

Adjust color and tone, remove imperfections, correct perspective, and more with Corel PHOTO-PAINT's powerful layer-based photo editing tools. Improve the size and quality of your images with artificial intelligence, create complex compositions, and add special effects.

Typography

Add effects like block shadows and contours to text, fine-tune fonts responsively, fit text to paths, and more, with a complete set of typography tools, including variable fonts and integrated access to Remote fonts.

Web graphics tools

Develop captivating web content with a collection of web graphics tools and presets. Ensure any graphic you export for the web has crisp edges, thanks to a series of pixel-perfect tools.

Professional print output

Experience unconstrained control over output to all media types, with advanced printing options that put CorelDRAW ahead of the competition. With a powerful color management engine and integrated PANTONE color support, you'll have complete confidence that your colors are accurate before you print.

What's included?

Main Applications



CorelDRAW®
Vector illustration
and page layout.



Corel PHOTO-PAINT™
Image editing and
pixel-based design.



CorelDRAW® Web
Browser-based
vector illustration
and graphic design.
Subscriber exclusive



Corel® Font Manager
Font exploration
and management.



CAPTURE™
Screen capture tool
(Windows only).



Content

- 7,000 clipart, digital images, and vehicle wrap templates.
- 1,000 high-resolution digital photos.
- Over 1,000 TrueType and OpenType fonts plus integrated access to over 1,700 Google Fonts families.
- 200+ professionally designed templates (plus 300+ additional templates for subscribers).
- Over 600 fountain, vector, and bitmap fills.
- Integrated access to Pantone® Color Libraries at no additional cost.
- 100+ Painterly brushes (plus 100 additional free brushes for subscribers).

Documentation & training

- Quick Start Guide
- Online Help
- Online training videos
- Built-in learning inspector
- Discovery files accessible through “Get Started” in the Welcome screen

© 2025 Corel Corporation. All rights reserved.

Corel, the Corel balloon logo, CorelDRAW, the CorelDRAW balloon logo, CAPTURE, Corel PHOTO-PAINT are trademarks or registered trademarks of Corel Corporation in Canada, the U.S., and/or elsewhere. Apple, macOS, and Mac are trademarks of Apple Inc. Google is a trademark of Google LLC. All other company, product and service names, logos, brands and any registered or unregistered trademarks mentioned are used for identification purposes only and remain the exclusive property of their respective owners. Use of any brands, names, logos or any other information, imagery or materials pertaining to a third party does not imply endorsement. # We disclaim any proprietary interest in such third-party information, imagery, materials, marks and names of others.

For all notices and information about patents please visit www.corel.com/patents

Original sample artwork is provided by third parties and is used, and/or modified, by permission, unless otherwise agreed with such parties.

System Requirements

Windows

- Windows 11 or Windows 10 (Version 22H2 or later), 64-bit, with latest Updates
- Intel Core i3/5/7/9 or AMD Ryzen 3/5/7/9/ Threadripper, EPYC
- OpenCL 1.2-enabled video card with 3+ GB VRAM
- 8 GB RAM (16 GB RAM or higher recommended)
- 5.5 GB hard disk space for application and installation files
- Mouse, tablet or multi-touch screen
- 1280 x 720 screen resolution at 100% (96 dpi)

Mac

- macOS Sequoia (14), macOS Sonoma (14), or macOS Ventura (13), with the latest revision
- Apple Silicon or Multicore Intel processor with AVX2 instruction set support (or Apple Silicon*)
- OpenCL 1.2-enabled video card with 3+ GB VRAM
- 8 GB RAM (16 GB RAM or higher recommended)
- 3 GB available hard disk space for application files
- 1920 x 1200 screen resolution
- Mouse or tablet

CorelDRAW Web - browser requirements

- Google Chrome Version 130 or higher
- Microsoft Edge Version 130 or higher
- Firefox* Version 130 or higher

*Support for Firefox is limited, and some features (such as clipboard) may not work as expected.

Internet connection is required to install and authenticate CorelDRAW Graphics Suite and access some of the included software components, online features and content.

