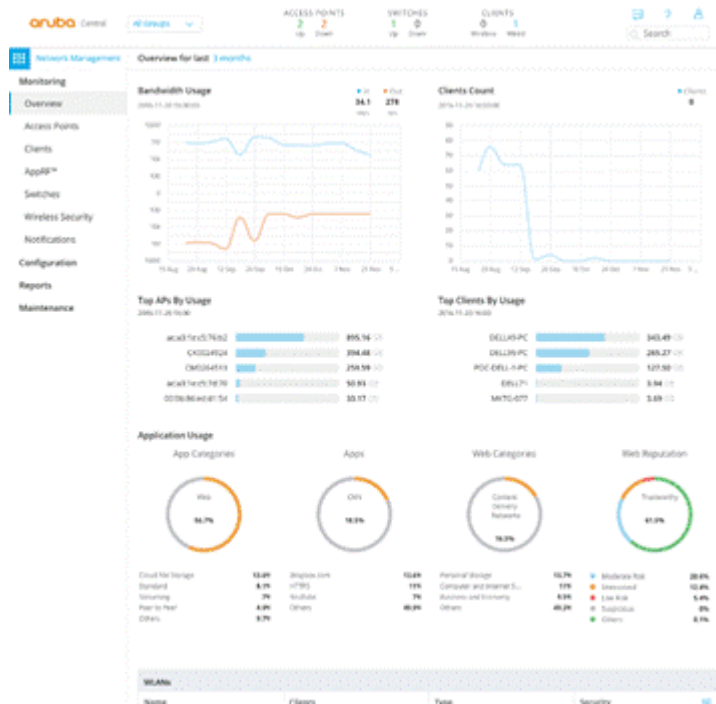


## Overview

### Aruba Central Software



## Product overview

Aruba Central is a cloud-hosted solution offering IT organizations not only a simple and effective way to manage and monitor their wired and wireless networks, but also powerful services such as customizable guest Wi-Fi, presence analytics and more.

With Aruba Central, you get anywhere-anytime access to ensure that your network is up and performing efficiently.

No additional management appliances need to be installed or maintained.

## Features and Benefits

### Network Health Monitoring and Troubleshooting

Get an at-a-glance summary of your entire networks health via an intuitive dashboard, designed to let you drill-down for more information with just a few simple clicks.

Using this single dashboard, you can view metrics for access points (APs), switches, and clients, along with flagged alerts and location mapping.

Isolate problems and troubleshoot quickly and easily with simple workflows, granular detail and extensive search capabilities.

- Check alerts by AP, switch name, MAC address, serial number, or any other attribute – and then click the device for more details.
- Get information about connected clients, memory usage and firmware for fast troubleshooting.
- Track individual Wi-Fi client data, including signal strength, speed, association history, and device type.
- Identify rogue devices on the network with Wireless Intrusion Detection System (WIDS).

Launch the command line interface directly into the AP and switch if needed.

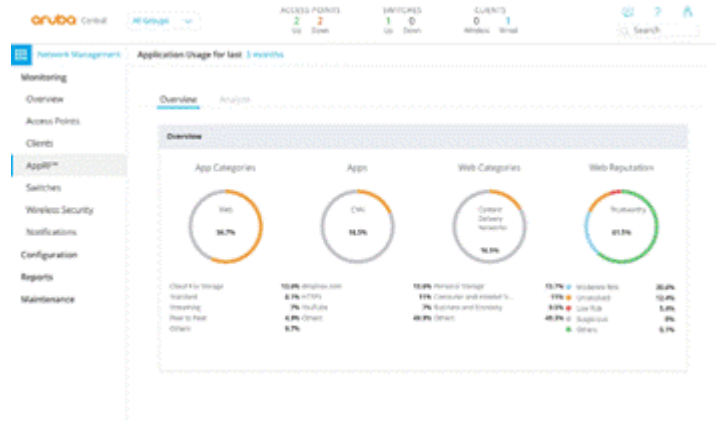
## Overview

### Application Visibility and Control

Secure and optimize your network performance with actionable application-level intelligence and web URL classification offered by our dedicated AppRF dashboard.

View and analyze traffic based on individual applications, application categories, web categories, and web reputation.

Leverage the app-specific insight to define and enforce granular access policies.



Granular visibility into apps and web traffic

### Mobile-Friendly Guest Access

Customize and simplify visitor access with fully, secure and scalable guest Wi-Fi management. Choose from well-known login methods for guest access:

- Allow anonymous or self-registered guest logins.
- Enable guest sponsors – such as receptionists, event coordinators and other non-IT staff – to create temporary guest accounts.
- Use social logins with Facebook, Google+, Twitter and LinkedIn.
- Leverage Facebook Wi-Fi if you are a business with a Facebook business page.

Customize mobile-friendly login pages to display with your logo, custom welcome messages, terms and conditions, backgrounds, colors, and images, or simply choose from existing templates for a quick and easy start.



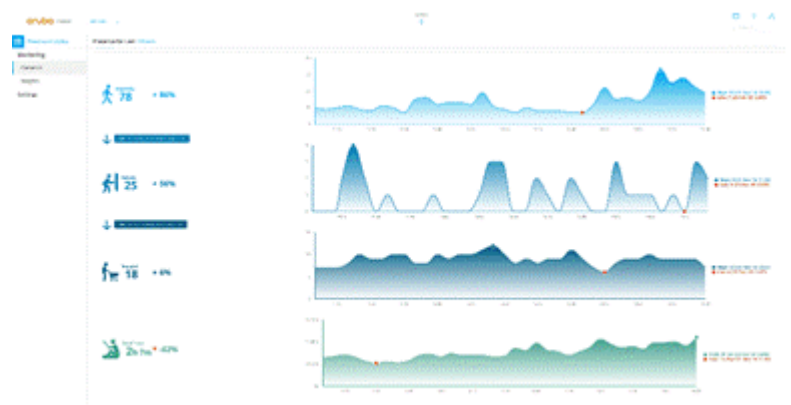
Customizable guest login page

### Presence Analytics

Get powerful insight into customer traffic and engagement with smart phone signals received by your Wi-Fi network.

- Gather real-time and historical data on how many prospective customers passed by a location, how many entered, stayed on, and for how long.
- Compare metrics across multiple locations and times to make intelligent business decisions.
- Customize RSSI and time thresholds to measure traffic and engagement conversions.

Capturing this valuable insight does not require installation and management of additional



### Overview

hardware. More importantly, mobile users do not need to be connected to the network to gather the essential customer traffic data, recognize patterns and find opportunities to improve your business is easier.

Visibility into customer traffic and engagement

### Zero-Touch Provisioning

Simplify network set up and offload IT resources by directly shipping Aruba Instant APs and Mobility Access Switches to remote sites where a non-technical person can simply unpack, power up and get them configured automatically.

When powered up, they simply download their configuration and firmware from Central and your network is up and running in minutes.

### Maintenance and Firmware Management

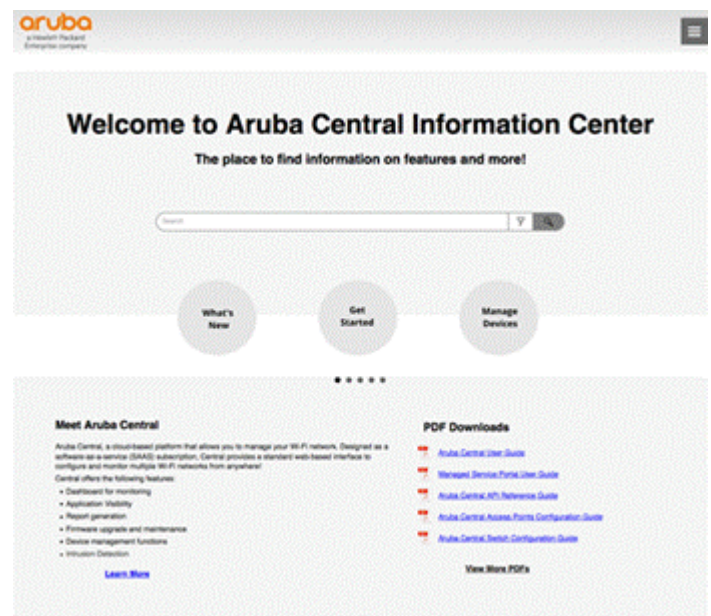
Streamline and automate your network management while maintaining complete control.

- Perform one-click firmware updates or schedule specific updates.
- Manage device licenses and user accounts with different levels of access to Central.
- Create groups and tag devices with labels to simplify firmware management and configuration.

### Reporting

Store your management data indefinitely so you can create reports containing historical data if needed.

- View network, AppRF and security snapshots over a predefined period.
- Schedule reports and receive automated email reports. Export them to a PDF for low-effort monitoring.
- Generate Payment Card Industry (PCI) reports that document proper security scanning was in place, keeping your company compliant with regulatory mandates.



Centralized hub for product information and tips

### Secure and Always-On

Aruba Central, designed from the ground up as a cloud application, ensures the highest possible availability and uninterrupted service.

- Web-scale database design for responsive performance, even when working with huge amounts of data.
- Redundancy with clustering and distribution to multiple data centers from multiple providers. If one provider experiences performance issues, others remain available for seamless continuity.
- Global reach with data center locations around the world.
- HTTPS connection with strong mutual authentication using certificates to ensure secure communication with Aruba products. Certificates are stored in Trusted Platform Module (TPM) chips on Aruba hardware for the highest level of protection.

## Overview

---

### Technical Support Included

Aruba Central has everything you need maintain a fully operational enterprise network, including full technical support. Your Aruba Central subscriptions includes:

- Phone and online support for any technical issues with Aruba Central, Instant APs and Mobility Access Switches.
  - Online case management portal to open technical support cases and track their statuses.
  - Access to the latest Aruba Instant and Mobility Access Switches firmware releases.
-

Configuration

## Ordering Information

Description	Part Number
<b>Device Management Subscription</b>	
Aruba Central Device Management 1 Token 1 Year Subscription E-STU	JY925AAE
Aruba Central Device Management 1 Token 3 Year Subscription E-STU	JY926AAE
Aruba Central Device Management 1 Token 5 Year Subscription E-STU	JY927AAE
<b>Services Subscription</b>	
Aruba Central Cloud Services 1 Token 1 Year Subscription E-STU	JY928AAE
Aruba Central Cloud Services 1 Token 3 Year Subscription E-STU	JY929AAE
Aruba Central Cloud Services 1 Token 5 Year Subscription E-STU	JY930AAE

## Summary of Changes

Date	Version History	Action	Description of Change
03-Apr-2017	From Version 2 to 3	Changed	Format on Accessories section updated
06-Mar-2017	From Version 1 to 2	Changed	Document name changed to Aruba Central Software Document was completely revised.
01-Nov-2016	Version 1	Created	Document creation.



Sign up for updates

---

© Copyright 2017 Hewlett Packard Enterprise Development LP. The information contained herein is subject to change without notice. The only warranties for Hewlett Packard Enterprise products and services are set forth in the express warranty statements accompanying such products and services. Nothing herein should be construed as constituting an additional warranty. Hewlett Packard Enterprise shall not be liable for technical or editorial errors or omissions contained herein.

To learn more, visit: <http://www.hpe.com/networking>

c05272678 - 15696 - Worldwide - V3 - 3-April-2017

