

# groupgear

...better connected

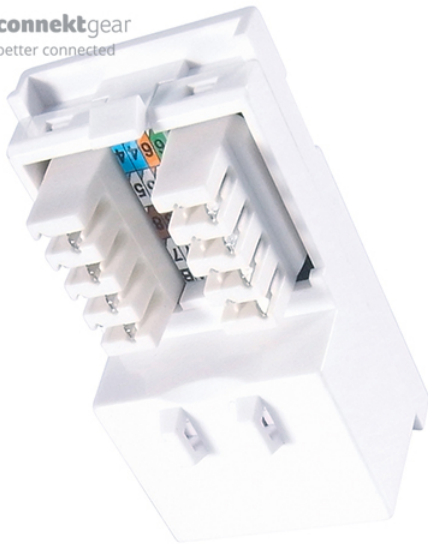
**Group Gear Limited**

Antler Buildings, Bromsgrove Road,  
Halesowen, West Midlands, B63 3HJ.

T 0121 503 0666

E [sales@groupgear.co.uk](mailto:sales@groupgear.co.uk)

W [www.groupgear.co.uk](http://www.groupgear.co.uk)



**Single IDC RJ45 Shuttered Module 25 x 50mm  
(Cat6) - White**

Brand: **connektgear**

Code: 90-0103

Box Qty: 500



## Why do you need it?

You need to insert a single Cat 6 RJ45 module into your network installation, and you want a reliable module as part of your install.

## What does it do?

Creates a single Cat 6 network port in your network installation. This is a simple yet effective way to upgrade your module and create

a new network port. This provides an easy install with no complicated wiring without compromising the quality of the install.

## Product Details

- Shutter style, low profile module
- ID window and label
- Complies with EIA TIA Category 6 standard
- Compatible with IDC punchdown tool
- To be used in conjunction with Connekt Gear's faceplates and back boxes
- Colour matched with Connekt Gear's faceplates and back boxes
- Lifetime warranty
  
- Barcode: 5035624022478
  
- Dimensions: 25 x 50mm (W x H)
- Colour: White

## Packaging Specifications

- Packaging Type:
- Packaging Dimensions: 106 x 153mm (W x H)
- Packaging Material: Retail
- Packaging Weight:
- Product & Packaging Weight: 0.0140Kg
- Carton Dimensions: 400 x 290 x 430mm
- Carton Net Weight: 1Kg
- Carton Gross Weight: 7.8Kg
- Country of Origin: PR China
- Commodity Code: 8544421000

## Whats In The Box

- 1 x Single Cat6 RJ45 Module

## Product Information

- Barcode: 5035624022478
- Commodity Code: 8544421000
- Product Weight: 0.02