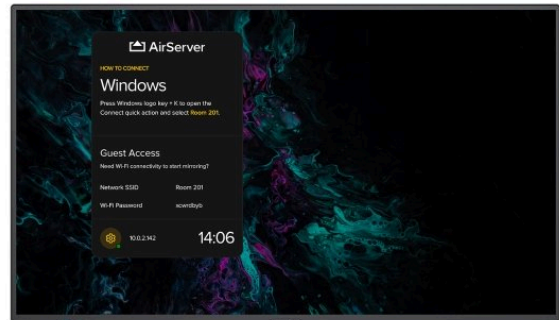
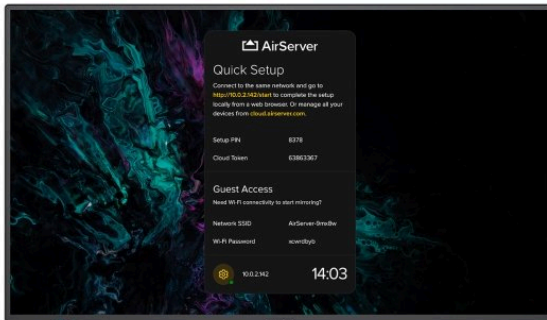


NEC MultiSync® M551 AirServer

LCD 55" Midrange Large Format Display (incl. AirServer® Embedded Screen Mirroring Solution)

Datasheet



Content sharing made simple with native wireless screen mirroring

Initiating effective collaboration in meeting rooms has never been easier to plan, install and operate. Simply share content from your personal device to the large meeting room display.

The MultiSync® ME/M series AirServer models provide a sleek combination of intuitive screen sharing with professional display technology for meeting rooms and huddle spaces.

Future-proof and upgradable, AirServer software is powered by a pre-installed modular SoC Raspberry Pi module which transforms the Sharp/NEC M and ME series large format display into a universal screen mirroring receiver. With AirServer enabled on the Sharp/NEC large format display, users can wirelessly mirror the content on their personal screen (Mac or PC, iPhone, iPad, Android or Chromebook) to the meeting room display, instantly turning the room into a collaborative space.

Benefits

Modern and slim design – robust yet elegant allowing for an unobtrusive integration into any application and environment.

Secure remote management – control your devices remotely and securely using NEC NaviSet Administrator 2; proactively manage maintenance requirements saving time and resources

Unhindered readability – no reflections from windows or other light sources means no disruption to the visibility of signage content or meeting room presentation

Mission-critical 24/7 ready operation – the meticulous selection of industrial-grade components and careful design focused on demanding usage scenarios accompany an impressive and continuous viewer experience.

Future Ready Connectivity – featuring multiple industry standard digital and analogue signal inputs for flexible integration into AV infrastructures.

Product Information

Product Name	NEC MultiSync® M551 AirServer
Product Group	LCD 55" Midrange Large Format Display (incl. AirServer® Embedded Screen Mirroring Solution)
Order Code	40001582

Display

Panel Technology	IPS with Edge LED backlights
Screen Size [inch/cm]	55 / 138.8
Aspect Ratio	16:9
Brightness [cd/m²]	500
Contrast Ratio	≥ 8000:1 ¹
Viewing Angle [°]	178 horizontal / 178 vertical (typ. at contrast ratio 10:1)
Colour Depth [bn]	1.076 (10bit)
Response Time (typ.) [ms]	8
Panel Refresh Rate [Hz]	60
Haze Level [%]	Pro (28)
Supported Orientation	Landscape; Portrait

Synchronisation Rate

Horizontal Frequency [kHz]	26 - 91.1
Vertical Frequency [Hz]	23 - 86

Resolution

Native Resolution	3840 x 2160			
Supported Resolutions	1024 x 768; 1280 x 1024; 1280 x 720; 1360 x 768;	1366 x 768; 1400 x 1050; 1440 x 900; 1600 x 1200;	1650 x 1050; 1900 x 1200; 1920 x 1080; 1920 x 2160;	2560 x 1440; 2560 x 1600; 3840 x 2160; 4096 x 2160

Connectivity

Input Video Digital	1 x DisplayPort (with HDCP); 2 x HDMI (with HDCP)
Input Audio Digital	1 x DisplayPort; 2 x HDMI
Input Control	LAN 100Mbit; remote control wire (3,5mm jack); RS232
Input Data	1 x USB 2.0 (MediaPlayer)
Output Audio Analogue	1 x 3,5 mm jack
Input Detect	Custom; First; Last

Open Modular Intelligence

Intel® SDM	accepts Intel® Smart Display Modules Large and Small up to 66 W
Compute Module Slot	RPi Compute Module 4

AirServer Embedded Screen Mirroring Solution

AirPlay	code and password; extend macOS display; iOS, iPadOS and macOS; screen mirroring and content sharing
Google Cast	Android, Chrome OS and Google Chrome; prompt security; screen mirroring and cast from apps with DRM
Miracast	Android and Windows; extend Windows 10 desktop; Miracast over infrastructure; screen mirroring; touchback and pen support

Guest Connectivity	2.4 and 5 GHz channel selection; access control (device only, Internet only or Internet/LAN; Wi-Fi Hotspot; WPA2 security
Video Output	up to Full HD (1920 x 1080) at 60 fps
No. of Connections	1
Networking	1 x Gigabit LAN; 802.11 ac/b/g/n Wi-Fi; 802.1X security; IPv6 addresses; Proxy
Automatic Updates	provides new features and security enhancements

Sensors

Ambient Light Sensor	Integrated, triggered actions programmable
Temperature Sensor	Integrated, 3 sensors, triggered actions programmable

Electrical

Power Consumption Eco/max. [W]	110 shipping
Power Savings Mode [W]	< 0.5; < 2 (Networked Standby)
Power Management	VESA DPMS
Power Supply	100-240 V AC; 50/60 Hz; internal

Environmental Conditions

Operating Temperature [°C]	+0 to +40
Operating Humidity [%]	20 to 80
Storage Humidity [%]	10 to 90
Storage Temperature [°C]	-20 to 60

Mechanical

Dimensions (W x H x D) [mm]	1,239.6 x 713 x 61.1
Weight [kg]	26.4
Bezel Width [mm]	12 (top); 12.5 (left and right); 15.6 (bottom)
VESA Mounting [mm]	300 x 300 (FDMI); 4 holes; M6
Ingress Protection	IP5x (front); IP2x (back)
Packaging Dimensions (W x H x D) [mm]	1,430 x 920 x 250
Packaging Weight [kg]	36.47
Colour Bezel	Pantone 426M (black)
Material	Metal

MediaPlayer

Supported File Storage / File System	USB 2.0 / FAT16, FAT32
Supported Image Formats	JPG (baseline, progressive, RGB, CMYK); max. resolution 15360 x 8640
Supported Video Formats	MPG (MPEG1/2/4, max res 1080p@30Hz); MP4 (MPEG2/4, H.263, H.264, HEVC/H.265, max res 3840x2160@60Hz); TS (MPEG2, H.264, HEVC/H.265, max res 3840x2160@60Hz); audio: LPCM, MP3, AAC; WMV (video H.264, Windows Media Video 9, max res 1080p@30Hz, audio WMA 9, WMA 10 Pro)
Supported Audio Formats	MP3 (MP3); max. bit-rate 320 kBit/s

Available Options

Accessories	Feet (ST-43M); Soundbar (active: SP-ASCM-IQ2 / SP-ASCM-2); Speaker (SP-RM3a); Trolley (PD04-Tipster Trolley); Wall mount (PDW S 32-65 L, PDW S 32-65 P)
-------------	---

Green Features

Energy Efficiency	Energy consumption: 100 kWh/1000 h; Energy efficiency class: G; LED backlight
Ecological Standards	EnergyStar 8.0

Additional Features

Special Characteristics	DICOM Simulation; HDMI ARC; Powered USB Port (10 W); Removable Logo
Safety and Ergonomics	BSMI; CE; EAC; EMC Class B; Energy Star 8; FCC Class B; KC/KCC; PSB; RCM; RoHS; VCCI
Pixel Failure Class	ISO 9241-307, Class 1
Audio	Integrated Speakers (10 W + 10 W)
Shipping Content	2x AAA batteries; Display; HDMI Cable; Power Cable; Remote Control; Setup Manual
Warranty	3 years warranty incl. backlight; additional services available; optional 4. + 5. year warranty extension ²
Operating Hours	24/7
External Control	AMX NetLinx Support; ASCII Control Commands; Crestron Connected; HDMI CEC; HTTP Browser; PJLink; Scheduled Timer; SNMP
Remote Management	Automated Email Alerts; NEC NaViSet Administrator 2
Security	Disable HW Buttons; Disable IR Functionality; Emergency Notification
Resistance to Fire	Metal backcover, plastic material certified acc. to UL94-5VB

¹ out of the box conditions, local dimming ON

² please refer to terms and conditions of warranty extensions



RoHS



CE



FCC Class B



VCCI



RCM

This document is © 2022 Sharp NEC Display Solutions Europe GmbH.

All rights reserved in favour of their respective owners. All hardware and software names are brand names and/or registered trademarks of the respective manufacturers. All specifications are subject to change without notice. Errors and omissions are excepted. 05.05.2022