

Let your productivity flow

Perform at your peak with
a Fellowes Monitor Arm



Fellowes

The precision you need. The style you want.

When we're in a flow state, incredible things happen. We become totally immersed, able to fly through activities without being distracted. Time seems to pass unnoticed as we achieve more. Can you imagine if every day we could be in that flow state? A Fellowes Monitor Arm makes it possible, by helping you accomplish tasks faster, easier and in heightened ergonomic comfort. Allowing you to perform at your peak, however you wish to work.

In a 2021 survey*, 48% of participants said that relieving neck pain would make their workspace healthier for them. Using a Fellowes monitor arm means that you can set your screen to the exact height and angle to improve your health when working. This reduces the risk of neck pain and allows for more comfortable, productive working.

Fellowes 100-year wealth of research and product development in the office workspace has resulted in a monitor arm and accessories range designed to allow effortless adjustment for full workspace flexibility, with configurations and added features to suit all individual work styles.



FIRA Compliance

FIRA International are an independent Ergonomic Standards Accreditor.

This logo signifies that the relevant product complies with EU Health and Safety Legislation: BS EN ISO 9241 Ergonomic requirements for office work with visual display terminals (VDT's): Part 5: 1999, workstation layout and postural requirements.

All Fellowes monitor arms are FIRA accredited.



*Survey data collected by Censuwide for Fellowes, 2021



reddot winner 2022



Tallo™ &

Tallo Modular™

Perfect
Harmony

Our most sophisticated range of monitor arms,
expertly crafted to perform effortlessly

Tallo™ not only reimagines how a monitor arm can facilitate productive work, but enriches it through human-centered design. Modern in appearance, robust in performance, Tallo™ makes any desk a productive space for comfortable, meaningful work.



How Tallo™ works

Choose a configuration to suit your needs from a mixture of fixed and gas spring arm options.

Fixed and motion arms

Fixed arms provide additional reach and movement as well as being a cost effective solution where regular height adjustment is not required. Motion arms deliver effortless gas spring height adjustment, great for hot desking and collaborative working.

Sliders

Sliders allow you to increase the size of screens an arm can hold whilst enabling you to place screens seamlessly side by side. This helps to save valuable desk space and maintain an ergonomic working position.

Seamless
Adjustment

Ergonomic **excellence**

Experience perfect harmony

S = Slider

Provides seamless monitor alignment and increases the maximum screen size the arm can hold

M – Motion Arm (gas spring)

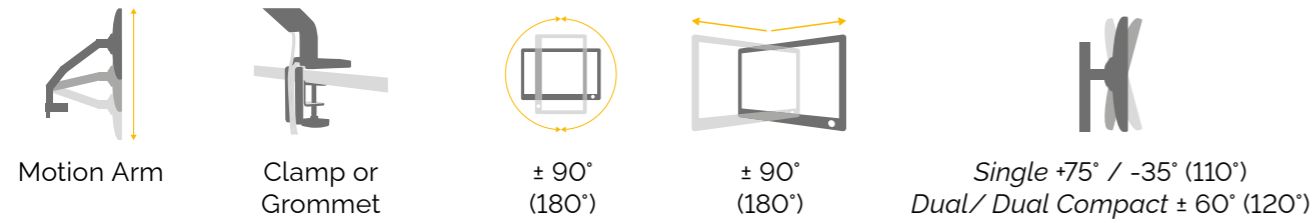
Provides dynamic effortless height adjustability

F = Fixed Arm

Increases reach, height and movement range

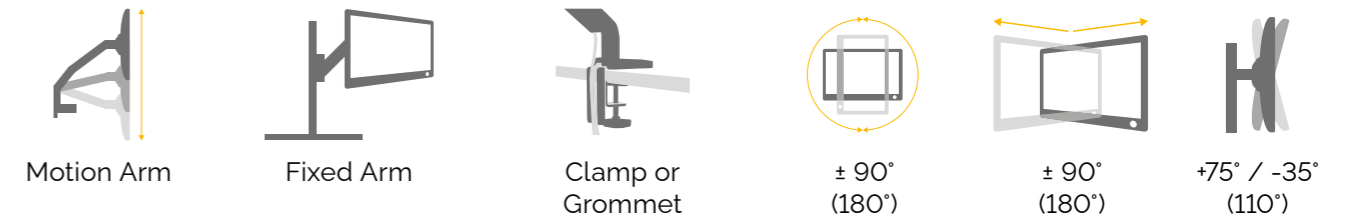


Tallo Configurations



	Tallo™ Single	Tallo™ Dual	Tallo™ Dual Compact
Code	White: 8614601	White: 8614701	White: 8614801
	Black: 8614301	Black: 8614401	Black: 8614501
	Silver: 8613001	Silver: 8613101	Silver: 8613201
Product Dimensions (H x W x D)	130 x 375 x 320 mm	145 x 570 x 430 mm	150 x 660 x 320 mm
Product Weight	3.6 kg	6.9 kg	5.8 kg
Height Adjustment Range	178 - 500 mm	178 - 500 mm	0 - 482 mm
Dynamic Height Adjustability	322 mm		
Pole Height	-	-	200 mm
Reach Range	74 - 619 mm	120 - 667 mm	120 - 446 mm
Rotation	± 90° (180°)		
Pan	± 90° (180°)		
Tilt	+ 75° / - 35° (110°)	± 60° (120°)	
Arm Swivel	360° / 180° Lockout feature	270° / 180° Lockout feature	270° / 180° Lockout feature
VESA	75 x 75 / 100 x 100		
Clamp: Desk Thickness	0 - 45 mm		
Grommet: Desk Thickness / Diameter	10 - 75 mm / 10 - 80 mm		
Tension Adjustment	Yes		
Weight Capacity: Per Screen (kg)	1 - 9 kg		
Maximum Monitor Size (diagonal)	40" (101.6 cm)	40" (101.6 cm)	40" (101.6 cm)
Maximum Monitor Size (W x H)	100 cm (H)	144 x 100 cm	103 x 96 cm
Warranty	15 years		

Tallo Modular Single Configurations



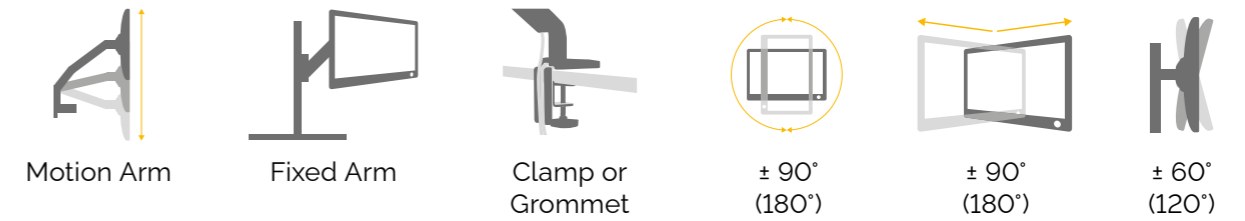
	1F	1FF	1M	1FM
Code	White: 8615901	White: 8616001	White: 8616201	White: 8616101
	Black: 8614901	Black: 8615001	Black: 8615201	Black: 8615101
	Silver: 8613301	Silver: 8613401	Silver: 8613601	Silver: 8613501
Product Dimensions (H x W x D)	100 x 550 x 250 mm	100 x 540 x 312 mm	100 x 505 x 140 mm	100 x 555 x 320 mm
Product Weight	3.3 kg	4.0 kg	3.7 kg	4.4 kg
Height Adjustment Range	166 - 603 mm	250 - 673 mm	0 - 772 mm	0 - 852 mm
Dynamic Height Adjustability	-	-	322 mm	322 mm
Pole Height	510mm			
Reach Range	74 - 373 mm	74 - 628 mm	74 - 432 mm	74 - 687 mm
Rotation	± 90° (180°)			
Pan	± 90° (180°)			
Tilt	+ 75° / - 35° (110°)			
Arm Swivel	270°			
VESA	75 x 75 / 100 x 100			
Clamp: Desk Thickness	0 - 45 mm			
Grommet: Desk Thickness / Diameter	10 - 75 mm / 10 - 80 mm			
Tension Adjustment	No	No	Yes	Yes
Weight Capacity: Per Screen (kg)	1 - 9 kg			
Maximum Monitor Size (diagonal)	40" (101.6 cm)	40" (101.6 cm)	40" (101.6 cm)	40" (101.6 cm)
Maximum Monitor Size (H)	121 cm	135 cm	154 cm	170 cm
Warranty	15 years			

Tallo Modular Dual Configurations



	2FS	2FFS	2MS	2FMS
Code	White: 8616301	White: 8616401	White: 8616601	White: 8616501
	Black: 8615301	Black: 8615401	Black: 8615601	Black: 8615501
	Silver: 8613701	Silver: 8613801	Silver: 8614001	Silver: 8613901
Product Dimensions (H x W x D)	160 x 550 x 255 mm	155 x 610 x 374 mm	150 x 660 x 320 mm	155 x 620 x 365 mm
Product Weight	5.7 kg	8.3 kg	4.6 kg	7.9 kg
Height Adjustment Range	188 - 623 mm	250 - 673 mm	0 - 791 mm	0 - 871 mm
Dynamic Height Adjustability	-	-	322 mm	322 mm
Pole Height	510 mm			
Reach Range	120 - 450 mm	120 - 705 mm	120 - 446 mm	120 - 764 mm
Rotation	± 90° (180°)			
Pan	± 90° (180°)			
Tilt	± 60° (120°)			
Arm Swivel	270° / 180° Lockout feature			
VESA	75 x 75 / 100 x 100			
Clamp: Desk Thickness	0 - 45 mm			
Grommet: Desk Thickness / Diameter	10 - 75 mm / 10 - 80 mm			
Tension Adjustment	No	No	Yes	Yes
Weight Capacity: Per Screen (kg)	1 - 9 kg			
Maximum Monitor Size (diagonal)	40" (1016 cm)			
Maximum Monitor Size (W x H)	94 x 125 cm	145 x 135 cm	104 x 158 cm	154 x 174 cm
Warranty	15 years			

Tallo Modular Triple & Quad Configurations



	3FFS	3FMS	4FFS	4FMS
Code	White: 8616701	White: 8616801	White: 8610101	White: 8601401
	Black: 8615701	Black: 8615801	Black: 8610001	Black: 8610301
	Silver: 8614101	Silver: 8614201	Silver: 8610201	Silver: 8610501
Product Dimensions (H x W x D)	155 x 610 x 374 mm	155 x 620 x 365 mm	155 x 620 x 365 mm	100 x 640 x 345 mm
Product Weight	7.3 kg	9.6 kg	15.0 kg	15.4 kg
Height Adjustment Range	267 - 524 mm	267 - 524 mm	250 - 874 mm	112 - 1084 mm
Dynamic Height Adjustability	-	322 mm	-	322 mm
Pole Height	510 mm		721 mm	
Reach Range	120 - 705 mm	120 - 764 mm	120 - 705 mm	120 - 764 mm
Rotation	± 90° (180°)			
Pan	± 90° (180°)			
Tilt	± 60° (120°)			
Arm Swivel	270° / 180° Lockout feature			
VESA	75 x 75 / 100 x 100			
Clamp: Desk Thickness	10 - 85 mm			
Grommet: Desk Thickness / Diameter	10 - 75 mm / 10 - 80 mm			
Tension Adjustments	No	Yes	No	Yes
Weight Capacity: Per Screen (kg)	1 - 9 kg		1 - 7 kg	
Maximum Monitor Size (diagonal)	30" (76.2 cm)	32" (81.2 cm)	40" (101.6 cm)	40" (101.6 cm)
Maximum Monitor Size (W x H)	73 x 102 cm	78 x 102 cm	102 x 57 cm	120 x 67 cm
Warranty	15 years			

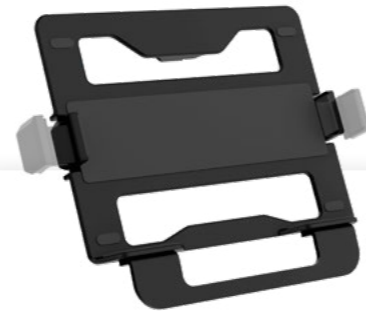
Tallo™ Laptop Arm

Effortless integration

Combine with any Tallo arm for a multi-screen set up. Optional ergonomic handle for easy adjustment and quick release plate for seamless installation.



Tallo Laptop Arm Accessory	
Code	White: 8000501
	Black: 8000401
	Silver: 8000601
Product Dimensions (H x W x D)	312 x 242 x 52 mm
Product Weight	2 kg
Weight Capacity (kg)	6 kg
Maximum Laptop Size (diagonal)	18" (45.72 cm)



Ergonomic Handle

Optional handle allows for easy repositioning and sharing with colleagues.

Tallo™ FlexCharge Hub

Qi and USB connectivity

Upgrade your Tallo monitor arm with the Tallo Flexcharge Hub.

Featuring Qi wireless charging and easy to access fast charging USB ports, the Flexcharge makes staying connected effortless.



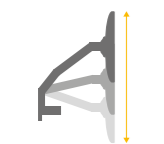
	White	Black	Silver
Code	7502501 (UK) 7502601 (EU)	7502901 (UK) 7503001 (EU)	7503301 (UK) 7503401 (EU)
Product Dimensions (H x W x D)	29 x 165 x 219 mm		
Product Weight	0.5 kg		
Power consumption	12v, 3A		
USB Connectivity	1 x USB Port (Type A) Quick Charge 5V – 12V, 2.4A 1 x USB Port (Type C) Quick Charge 5V – 12V, 2.4A		
Wireless charging	Qi compatible smartphone only 5V, 2A, 10 Watts		
Warranty	5 years		



Eppa™

Enjoy seamless fluidity

Beneath the Eppa's minimal design is a reliable and smooth gas spring adjustment control. This allows the user to effortlessly adjust the height and position of their monitors. The Eppa range of monitor arms offers a comfortable viewing distance regardless of the depth of your desk top.



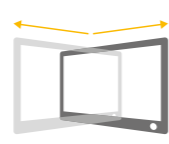
Motion Arm



Clamp or Grommet



± 90° (180°)



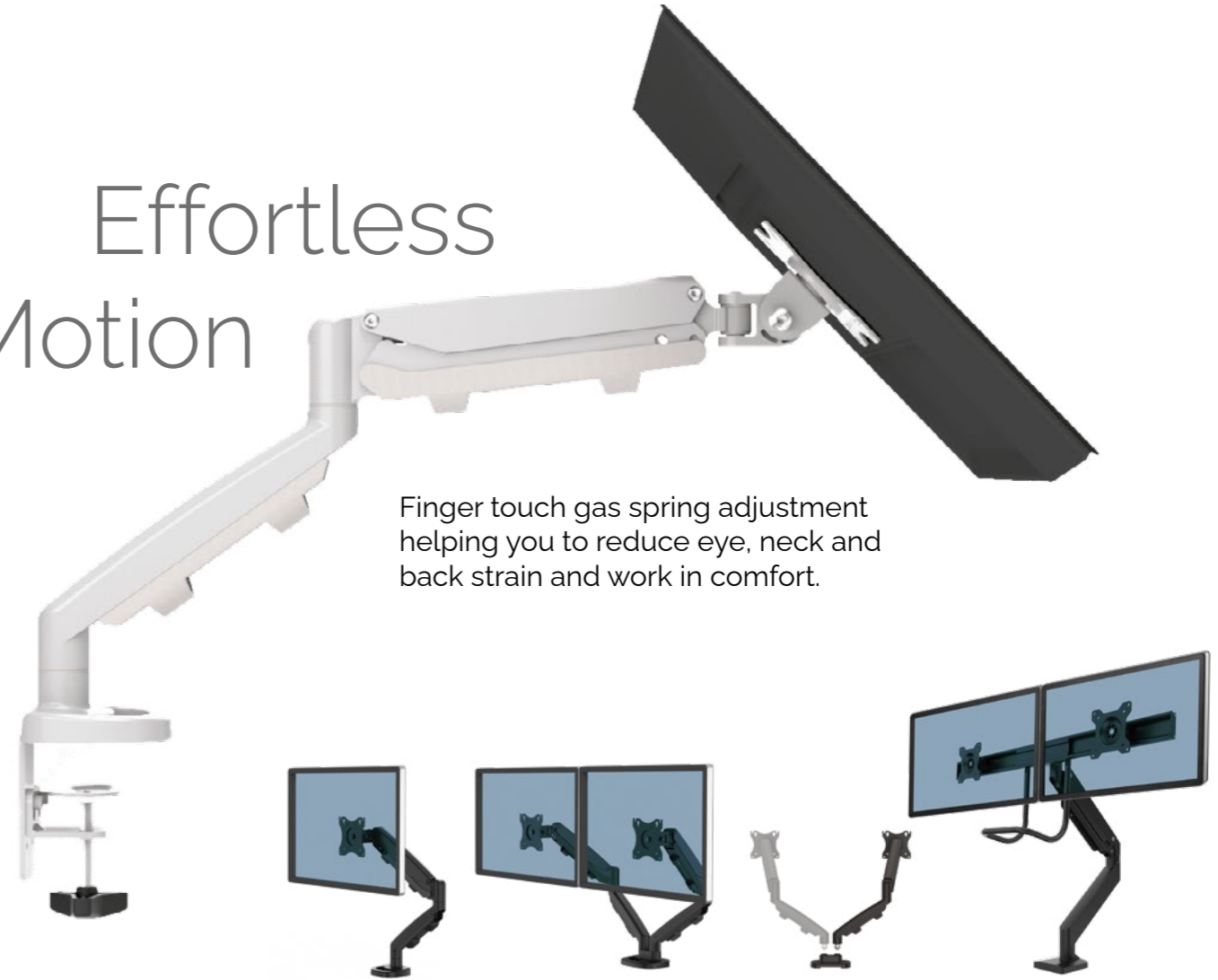
± 90° (180°)



+ 90° / - 25° (115°)

Effortless Motion

Finger touch gas spring adjustment helping you to reduce eye, neck and back strain and work in comfort.



	Single	Dual	Dual Kit	Cross Bar
Code	White: 9683201	White: 9683501	White: 9683801	White: 9909401
	Black: 9683101	Black: 9683401	Black: 9683601	Black: 9909301
	Silver: 9683001	Silver: 9683301	Silver: 9683701	Silver: 9909201
Product Dimensions (H x W x D)	480 x 117 x 565 mm	480 x 1000 x 565 mm	480 x 117 x 565 mm	830 x 726 x 46 mm
Product Weight	3.0 kg	5.1 kg	3.2 kg	7.2 kg
Height Adjustment Range	133 - 415 mm			251 - 601 mm
Dynamic Height Adjustability	282 mm			350 mm
Reach Range	67 - 537 mm			103 - 629 mm
Rotation	± 90° (180°)			
Pan	± 90° (180°)			±10° (20°)
Tilt	+ 90° / - 25° (115°)			±10° (20°)
Arm Swivel	360°			360° / 180° Lockout feature
VESA	75 x 75 / 100 x 100			
Clamp: Desk Thickness	10 - 85 mm			
Grommet: Desk Thickness / Diameter	10 - 85 mm / 8 - 82 mm			10 - 85 mm / 10 - 48 mm
Tension Adjustment	Yes			
Weight Capacity: Per Screen (kg)	1 - 8 kg			
Maximum Monitor Size (diagonal)	40" (101.6 cm)			32" (81.2 cm)
Maximum Monitor Size (W x H)	99 x 829 cm			76 x 1201 cm
Warranty	5 years			

Fluid collaboration made simple

