



Insight to action —  
across every endpoint.

# Automated device lifecycle management – across on-premises, cloud-based, and hybrid environments

*We simplify IT complexity so you can focus on what matters: keeping your systems secure and users productive*

baramundi automation simplifies and streamlines your core IT tasks:



The **baramundi Management Suite** and **baramundi Proactive Hub** can transform IT efficiency and quality by dramatically reducing the amount of time-consuming manual work needed for routine endpoint tasks.

Powerful and intuitive automation in the **baramundi Management Suite** enables you to streamline lifecycle management for Windows, Linux, and Mac clients, as well as iOS and Android mobile devices. With automated inventory updates, OS configuration and installation, software distribution, patch management and more, you'll reduce costs, optimize infrastructure performance, and gain time for new projects. <https://www.baramundi.com/en-us/products/baramundi-management-suite/>



baramundi perform2work is a **baramundi Proactive Hub** solution that combines continuous collection of endpoint and network performance data with end-user feedback so you can identify and resolve hardware and software problems early on.

<https://www.baramundi.com/en-us/products/baramundi-proactive-hub/perform2work/>



## Your Advantages

- Comprehensive endpoint management
- Continuous endpoint monitoring and experience management
- Powerful and easy to use
- Flexible deployment – on-premises, cloud-hosted, or hybrid
- Rapid ROI through improved efficiency, quality, and costs
- Outstanding support from our knowledgeable and responsive IT team
- ISO 27001 certified and EU data protection compliant



## Flexible on-premises, cloud, or hybrid deployment

**Cloud or on-prem – why not both?** A hybrid solution provides greater flexibility for managing heterogeneous environments and for meeting a broader range of business, IT, and compliance requirements. It also increases your organization's ability to respond rapidly to changes in technology and market conditions.

### Choose your deployment:

- baramundi Management Suite as a classic on-premises server installation
- baramundi Management Suite as a Service – hosted and always up to date
- baramundi Proactive Hub – a 100% cloud-native service

## Hybrid Co-Management for Intune

Combine the baramundi Management Suite with **modern endpoint management systems** to take advantage of best-of-breed capabilities for comprehensive co-management to gain:

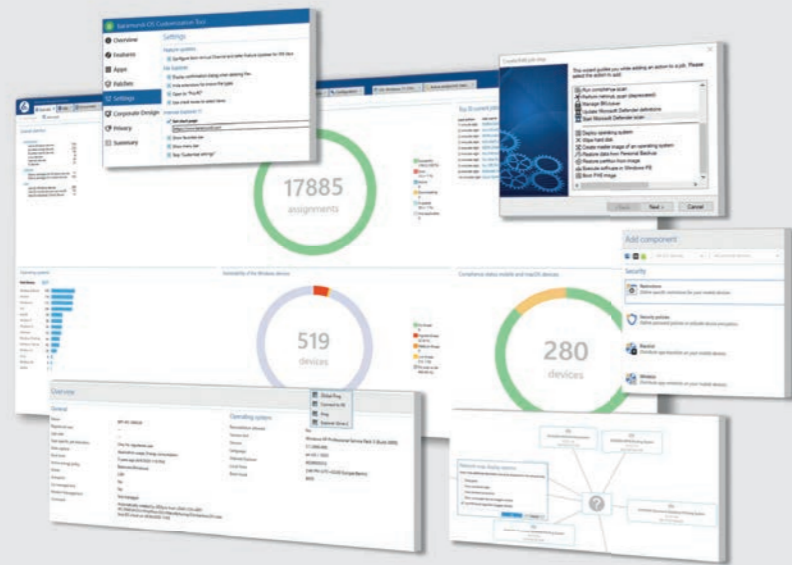
- **Flexibility:** Test and implement changes without affecting overall system functionality.
- **Business Continuity:** Leverage both cloud-based and on-premises management systems for greater security and to ensure uninterrupted operations.
- **More Control:** Support a wider range of devices, administrative actions, and operating requirements.
- **Data Sovereignty:** Maintain control of your own data while taking advantage of cloud-based management.



<https://www.baramundi.com/en-us/resources/checklists/co-management/>

# The baramundi Management Suite – Intuitive, Secure, Powerful

*simplify your IT management with a centralized unified end-point management platform—for greater visibility, less effort, and automated processes across all endpoints.*



With the baramundi Management Suite, you get all the relevant features for automated endpoint management, allowing you to handle IT tasks quickly and easily—whether on Windows, Linux, macOS, iOS, or Android.

- **Inventory & Network Discovery**
- **OS-Deployment & Configuration**
- **IT Automation**
- **Mobile Device Management**
- **Software Deployment**
- **Patch Management**
- **Endpoint Security**
- **Device Control powered by DriveLock**
- **Remote Access**
- **Vulnerability Scan**
- **Managed Software**
- **Interface for third-party integrations**

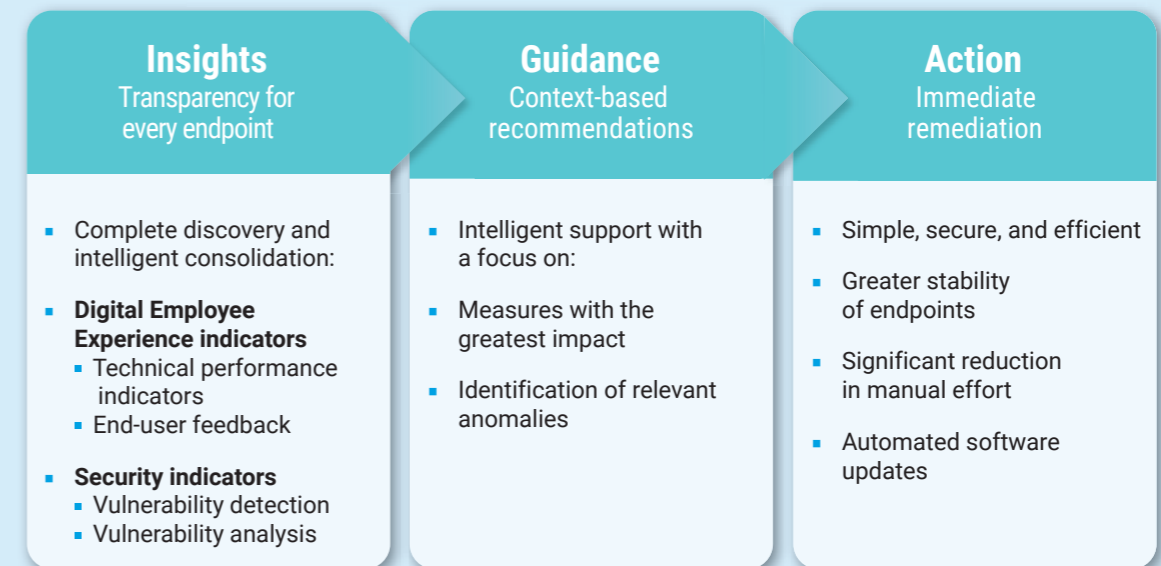
*“It’s amazing what we’ve been able to achieve with the software so far. Thanks to baramundi Mobile Device Management combined with classic client management, we now have true, comprehensive unified endpoint management. And we’re still far from having explored all the possibilities of this powerful tool. The training on how to use the software was crystal clear, and the trainers were well-prepared and knew their product inside and out. All in all, we are very satisfied with baramundi.”*

– Andrea Ruscitti, Information and Communication Officer at Servizi Italia

# The baramundi Proactive Hub – intelligent, automated, and scalable

At the heart of the Proactive Hub is the **Digital Employee Experience (DEX) solution baramundi perform2work**. Our tool collects and analyzes performance and stability metrics from endpoints and supplements them with direct end-user feedback. perform2work continues to evolve: with features such as remediation and IT security, it will develop into the **baramundi Proactive Hub** by fall 2026.

The cloud-based **baramundi Proactive Hub** offers the capabilities to manage the entire digital work environment intelligently, automatically, and scalably. Thanks to open interfaces, the data-driven platform can be flexibly integrated into existing IT landscapes—ideal for modern hybrid environments.



*“In the past, we had to conduct time-consuming analyses and evaluations of logs to identify the causes of problems. Now, using perform2work’s clear dashboard, we can detect early signs or anomalies before outages occur. This not only saves time but also a lot of stress, as we can resolve such issues internally before they disrupt other departments.”*

– Matthias Nguyen, IT Administrator, Schnaithmann Maschinenbau GmbH

## The baramundi partner world

### Grow and succeed as a baramundi sales partner

We collaborate with experienced system integrators, dedicated specialists, and carefully selected partners who want to provide their customers with high-quality solutions. Our partner levels are tailored to meet your individual requirements, and our combined expertise as well as practical know-how drive growth and innovation.

Become a partner  
[www.baramundi.com/en-us/partners/become-a-partner/](https://www.baramundi.com/en-us/partners/become-a-partner/)



#### baramundi Academy - Events & IT-Trainings

Whether it's online or in-person training, informative webinars, or exciting events, at baramundi you can learn everything you need to know about using our products, IT best practices, and specialist know-how. <https://www.baramundi.com/en-us/events-trainings/>

#### Platforms and Technology Partners

New software must integrate into existing environments and scale as needed. baramundi solutions and support make that easy.

Our open interfaces enable smooth integration with a wide variety of technologies and platforms. Our versatility makes baramundi an ideal choice for building and delivering a complete solution.



Find more information about our technology partners, supported platforms, and system requirements at:  
<https://www.baramundi.com/en-us/products/platforms/>

## About Us: baramundi stands for uncomplicated IT management

We specialize in on-premises, cloud-based, and hybrid Unified Endpoint Management with the baramundi Management Suite. We also provide cloud-native solutions for intelligent, automatic, and scalable management of digital work environments with the baramundi Proactive Hub. Since 2000, we've developed software and services that simplify IT complexity and help companies worldwide manage their digital infrastructure securely and efficiently. As part of the WITTENSTEIN group since 2017, we also have unique access to deep expertise in operational technology (OT) solutions for networked manufacturing environments.

#### Our mission & vision

- **Mission:** Offer organizations worldwide an open platform for secure, proactive, and uncomplicated management of digital infrastructure.
- **Vision:** Our customers can efficiently orchestrate their digital working environments and focus entirely on value creation.


#### Choose baramundi for

- **Uncomplicated solutions:** User-friendly, intuitive IT management
- **Excellent support:** Customers and industry analysts praise our in-house support
- **Reliable partnership:** Steady and continuous growth with more than 25 years of experience
- **Customer-focused:** We prioritize interactive, results-oriented customer relationships





More information about baramundi software can be found at [www.baramundi.com/en-us/company/](https://www.baramundi.com/en-us/company/)

baramundi software GmbH  
Forschungsallee 3  
86159 Augsburg, Germany

 +49 821 5 67 08 - 380  
request@baramundi.com  
www.baramundi.com


 +43 19 28 01 36 00 10  
request@baramundi.com  
www.baramundi.com


 +48 735 91 44 54  
request@baramundi.com  
www.baramundi.com

 +41 77 280 49 79  
request@baramundi.com  
www.baramundi.com

baramundi software USA, Inc.  
30 Speen St, Suite 501  
Framingham, MA 01701, USA

 +1 508-861-7561  
requestUSA@baramundi.com  
www.baramundi.com

 +44 2071 93 28 77  
request@baramundi.com  
www.baramundi.com

 +39 340 8861886  
request-italia@baramundi.com  
www.baramundi.com

 +49 821 5 67 08 - 390  
request@baramundi.com  
www.baramundi.com

Founded in  
2000

Part of  
Wittenstein SE

Award-winning  
Global Support



"We needed a secure on-prem solution, but one that also came with exceptional support and service. Simply put, we didn't just want software, we wanted a qualified, reliable partner that could accommodate our needs. After six months of careful evaluation we chose baramundi."

*Matteo Scala, Senior System Administrator at EXOR International*



"We now have the capability to issue targeting updates and patches for malware and other vulnerabilities as soon as they arise. baramundi helps contend with potentially hundreds of software threats discovered daily for the most common operating systems and daily applications, providing us with the time and resources that can be used to improve patient and staff care."

*Liz Capp-Gray, Director of IT at Medway NHS Foundation Trust*



"baramundi makes our work easier every day. The multitude and variety of tasks that we were able to automate and simplify [with baramundi] enable us to focus on the important and complicated tasks. Our entire IT department has become much more efficient since then – our users are often amazed by how quickly and accurately we respond to their requests."

*Michał Gawryluk, IT Asset Management Manager at CD PROJEKT RED*



**BOSCH**



Test the full functionality now –  
free and without obligation

