

TOUCHSCREENS

INFORMATION

65" All-in-One PCAP Interactive Display for Smart Collaboration Spaces

The ProLite T6529AS-B1AG is a 65" all-in-one PCAP touchscreen display built for the evolving needs of modern workspaces, especially huddle spaces where creativity, flexibility, and seamless sharing take center stage.

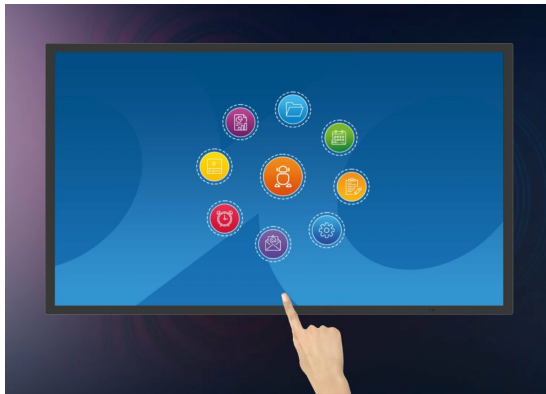
Powered by Android OS, this interactive display delivers a user-friendly and highly adaptable experience. You can install your preferred apps directly on the device, enabling customized workflows tailored to your environment — whether in a collaborative meeting area, an enterprise innovation hub, or an educational breakout room.

The USB-C loop-through feature simplifies connectivity by allowing multiple displays to be easily daisy-chained while transmitting power, data, and video — all through a single cable. This reduces cable clutter and setup time, making it ideal for dynamic workspaces. The included wall mounting bracket makes installation straightforward and secure.

With [iiSignage²](#) (CMS), [iiControl](#)(DMS), and [iiShare](#) (Wireless Presentation) you gain full control over content and messaging, even remotely — perfect for updating shared information or branded visuals on the fly. The integrated [EShare](#) app brings wireless screen sharing and collaboration to life, supporting multi-user interaction and real-time ideation.

The T6529AS-B1AG isn't just a display — it's a collaboration tool designed to empower teams, streamline communication, and make every meeting count.





Android OS

Thanks to Android OS, you can easily customize the display to your needs by installing applications directly to it.



iiSignage²

iiSignage² is our digital signage content management platform to easily show and control your content and to manage your displays in a secure way. The Content Management System (CMS) gives you total control of your messaging and advertising remotely and safely.



Signal FailOver

FailOver is a feature which automatically detects input sources. When there is no signal on the default input it will automatically switch to the next available input. FailOver allows customers to prioritize a number of inputs (incl. Browser, Media Player and Custom) and ensures your content is always actively displayed, assuring active content at all times.



Touch Through-Glass

This through glass touch screen works right through glass and can turn glass surfaces into an interactive touch screen display. Use it on storefront windows, real estate office, in-store for POS or restaurants.

SPECIFICATION

01 DISPLAY CHARACTERISTICS

Design	Edge to edge glass
Diagonal	64.5", 164cm
Panel	VA ELED
Touch Glass	Anti-Glare Glass with Anti-Gloss treatment, Smooth writing, Zero Gap - Air Bonded, DeepContrast PCAP
Panel	VA
Native resolution	3840 x 2160 (8.3 megapixel 4K UHD)
Aspect ratio	16:9
Panel brightness	500 cd/m ²
Brightness	420 cd/m ² with touch
Light transmittance	83%
Static contrast	4000:1
Response time (GTG)	6.5ms
Viewing zone	horizontal/vertical: 178°/178°, right/left: 89°/89°, up/down: 89°/89°
Colour support	1.07G (8 Bits+FRC) (72% NTSC)
Horizontal Sync	28 - 160kHz
Viewable area W x H	1428.5 x 803.5mm, 56.2 x 31.6"
Pixel pitch	0.372mm
Bezel colour and finish	black, matte

02 TOUCH

Touch technology	DeepContrast-PCAP
Touch points	20 (HID, only with supported OS)
Touch accuracy	+/- 2.5mm
Touch method	stylus, finger, glove (latex)
Touch interface	USB
Supported operating systems	All iiyama monitors are Plug & Play and compatible with Windows and Linux. For details regarding the supported OS for the touch models, please refer to the driver instruction file available in the downloads section.
Through-Glass	6mm
Palm rejection	yes

03 INTERFACES / CONNECTORS / CONTROLS

Digital signal input	HDMI x2 (1.4/ 2.0, max. 3840x 2160 @60Hz) USB-C x1 (3.2, DP 1.2 Alt mode, 15W PD)
Monitor control input	RS-232c x1 RJ45 (LAN) x1 IR x1 (3.5mm)
Audio output	Speakers 2 x 10W

Monitor control output	RS-232c x1 IR loop through x1 (3.5mm)
HDCP	1.4 / 2.2
USB ports	x2 (2.0 with Multi-Media support)
RS-232c	x1

04 FEATURES

Integrated software	Android 14, Signal FailOver, iiSignage ² (CMS), iiControl (DMS), iiShare, iiBrowser, Web-, PDF- and Media Player, File manager, EShare, TeamViewer
WiFi	WiFi 5 @ 2.4G / 5G
Hardware	CPU: MTK9679 Quad-core A73*4, GPU: Mali G51, RAM: 4GB, ROM: 32GB
Extra	handles, Touch Through-Glass
Kiosk mode	yes
Max. non-stop operating time	24/7
Anti image retention	yes
Glass thickness	3.7mm
Glass hardness	8H
Housing (bezel)	metal
OSD key lock	yes
Remote control lock	yes

05 GENERAL

OSD languages	EN, DE, FR, ES, IT, RU, CZ, NL, PL, SV, FI, DA, NB
Control buttons	Power (long press for Quick Menu (source, volume +, volume -, brightness +, brightness -, Touch unlock)
User controls	picture (brightness, contrast, sharpness, black level, tint, colour, noise reduction, gamma selection, low blue light, color temp., color control, picture reset), audio (balance, treble, bass, volume, audio out, max. volume, min. volume, mute, speakers setting audio reset), OSD setting (OSD timeout, OSD H position, OSD V position, OSD transparency, information OSD, side bar), general (logo and animation, wallpaper, no signal image, schedule, off timer), screen (zoom mode, custom zoom, system rotation, screen reset), device (power on status, RS232 routing, IR control, Physical button, motorized stand, power saving, panel saving, monitor info, Touch lock, other), system (language, system update, setting reset, factory reset, Android setting), admin (menu lock, meeting lock, HDMI CEC, kiosk mode, screen share, Miracast standby, log export)
Plug&Play	DDC2B

06 MECHANICAL

Orientation	landscape, portrait
Fanless design	yes
VESA mounting	400 x 400mm
Operation temperature range	0°C - 40°C
Operation temperature range (-°/+°)	-20°C - 60°C

MTBF	50000 hours (excluding backlight)
-------------	-----------------------------------

07 ACCESSORIES INCLUDED

Cables	power, HDMI, RS-232c
Touch pen	x2 (Dual tips)
Guides	quick start guide, safety guide
Other	Wall Mounting Bracket (VESA 400x400), Magnetic holding places for Touch pens (on sides in landscape)
Remote control	yes (batteries included)

08 POWER MANAGEMENT

Power supply unit	internal
Power supply	AC 100 - 240V, 50/60Hz
Power usage	118W typical, 0.5W stand by, 0.3W off mode

09 SUSTAINABILITY

Regulations	CB, CE, TÜV-Bauart, EAC, RoHS support, ErP, WEEE, REACH, UKCA, cTUVus
Energy efficiency class (Regulation (EU) 2017/1369)	G
REACH SVHC	above 0.1%: Lead

10 DIMENSIONS / WEIGHT

Product dimensions W x H x D	1447.3 x 852.3 x 42.8mm
Box dimensions W x H x D	1645 x 1050 x 192mm
Weight (without box)	38.5kg
Weight (with box)	47.3kg
EAN code	4948570125593



T INTERACTIVE SERIES
TOUCH PENS WITH DUAL-FUNCTION
TIPS AND ANTI-BACTERIAL COATING



x2

Iiyama

ProLite
T6529AS-B1AG

Iiyama



POWER



HDMI



USB-C