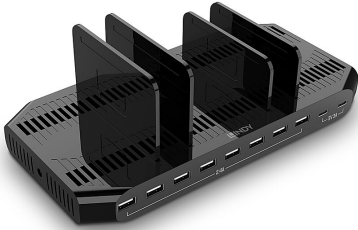


120W 10 Port USB Charging Station

Part No.: 73435



Description

- Simultaneous charging of up to 10 tablets, smartphones and other USB Type A and Type C devices
- Max. 5V 2.4A charging per USB Type A port, max. 5V 3A charging per USB Type C port
- Smart charging function adjusts the current for optimum, safe charging
- Battery Charging Standard 1.2 supports fast charging, Apple Charging Protocol, QC 3.0 and Samsung AFC supported
- 2 year warranty

The Lindy 120W 10 Port USB Charging Station allows charging up to 8 USB Type A and 2 Type C devices like tablets or smartphones. Each USB Type A port can provide up to 5V 2.4A, each USB Type C port can provide up to 5V 3A to satisfy the most power hungry devices. If all 10 ports are occupied and/or when total power draw is higher than 120W, load balancing will occur. With its smart charging function and support of many different protocols like QC 3.0 (only type C ports) , Samsung AFC and Apple 5V 2.4A Charging Protocol and BC 1.2 (only Type A ports) this USB Charging Station can recognise the connected device to automatically adjust the charging current for a fast and safe charge while also providing overcurrent, overvoltage and short-circuit protection to avoid excessive current damaging the device.

Plastic dividers can be assembled and stood on the top of the unit, which allows different widths for different tablets or mobile phone sizes. This product is perfect for use in schools, libraries, hotels, restaurants or any location that uses multiple devices. Country specific power cables are provided for seamless use of the charging station, ideal for global events or integration into installations abroad..

Technical details

Specifications

- Interface: USB
- Compatibility: 8x USB Type A ports and 2x USB Type C ports for USB Type A and C devices
- Power Requirements: 20V 6A
- Output Power: 5V 21A
- Power Delivery: -
- Special Features: BC 1.2, Smart Charging; QC 3.0; Samsung AFC; Apple 5V 2.4A Charging Protocol; Overcurrent, overvoltage and short-circuit protection, LED indicators

Connectors

- Input: 8x USB Type A (Female), 2x USB Type C (Female)

Physical properties

- Dimensions (approx.) WxDxH: 238x118x26mm (9.37x4.65x1.02in)
- Connector Material: -
- Housing Material: Plastic
- Net Weight: 0.98kg (2.16lb)

- Operating Temperature: 5°C - 35°C (41°F - 95°F)
- Storage Temperature: -20°C - 50°C (-4°F - 122°F)
- Humidity: 20% - 80% RH (non-Condensing)
- Colour: Black

Miscellaneous

- Packaging Type: Carton Box
- Packaging Dimensions: 269x156x95mm (10.59x6.14x3.74in)
- Gross Weight: 1.68kg (3.70lb)
- Warranty (Years): 2
- Certificated: CE, FCC, LVD, RoHS, REACH, California Proposition 65

Package Contents

- USB Charging Station
- 11 plastic separators
- 20V 6A PSU with 5.5/2.5mm DC cable, 0.9m (2.95ft)
- 4 country specific power cables (Schuko/US/UK/AUS to IEC C5), 0.9m (2.95ft)
- LINDY Manual

Purchasing information

- No.: 73435
- EAN: 4002888734356

© LINDY 2024