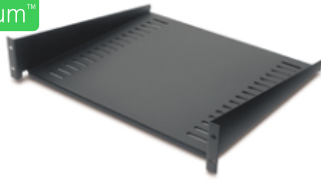


# Product datasheet

Specifications



## Fixed Shelf 50lbs/22.7kg Black

AR8105BLK

### Overview

<b>Presentation</b>	Cantilever fixed shelf to enable the mounting of a monitor or other equipment into the rack environment.
<b>Lead time</b>	

### Main

<b>Number of rack unit</b>	2U
<b>Number of cables</b>	1
<b>Provided equipment</b>	Installation guide Mounting hardware

### Physical

<b>Colour</b>	Black
<b>Height</b>	8.9 cm
<b>Width</b>	48.3 cm
<b>Depth</b>	40.6 cm
<b>Net weight</b>	2.27 kg
<b>Mounting location</b>	Front
<b>Mounting preference</b>	No preference
<b>Mounting mode</b>	Rack-mounted
<b>Maximum mounting depth</b>	40.64 cm
<b>Minimum mounting depth</b>	40.64 cm
<b>Permanent permissible load</b>	22.68 kg static

### Conformance

<b>Standards</b>	EIA-310D
------------------	----------

### Packing Units

<b>Unit Type of Package 1</b>	PCE
<b>Number of Units in Package 1</b>	1
<b>Package 1 Height</b>	10.2 cm
<b>Package 1 Width</b>	57.2 cm
<b>Package 1 Length</b>	44.5 cm

---

Package 1 Weight 4.261 kg

## Offer Sustainability

---

Sustainable offer status Green Premium product

---

REACH Regulation [REACH Declaration](#)

---

REACH free of SVHC Yes

---

EU RoHS Directive Pro-active compliance (Product out of EU RoHS legal scope)  
[EU RoHS Declaration](#)

---

Toxic heavy metal free Yes

---

Mercury free Yes

---

RoHS exemption information [Yes](#)

---

Take-back Take-back program available

## Contractual warranty

---

Warranty 2 years repair or replace

## Recommended replacement(s)