



ADDERView CATxIP 5000

High density fully featured USB, and Video control for local, remote and global users



The AdderView AVX5016 IP is the culmination of Adder's KVM over IP expertise to date. This new device offers 4 non blocking simultaneous IP connections together with a local port (5 separate users), and allows the user to control 16 separate devices. The AVX5016 IP is very small and compact enabling you to fit two units side by side to support 32 computers and 10 sessions in just 1U of rack space.

Using Adder's CAM modules, you can connect the switch via CAT5e cable to any type of server including PC, Mac and Sun. Country code reporting, DDC and continuous keyboard and mouse emulation further ensure faultless operation across your unique installation.



FEATURES

4 simultaneous IP users

Allows 4 simultaneous global users to connect via IP to any of the 16 connected devices.

Local user support

Direct connection for 1 local user to connect straight into the switch.

LDAP integration

Authenticate users against your existing LDAP infrastructure. This feature can be enabled and disabled.

RS232 control

Integrated RS232 gives you the ability to control other external devices such as power management devices.

Ecopulse circuitry

Ecopulse powers down unnecessary circuits when not required to reduce power requirements. Over the life of the product this will save significant power resources.

Encryption and Authentication

This enterprise grade KVM over IP switch employs AES128 bit encryption and RSA2048 authentication ensuring your control system remains secure at all times.

Configuration

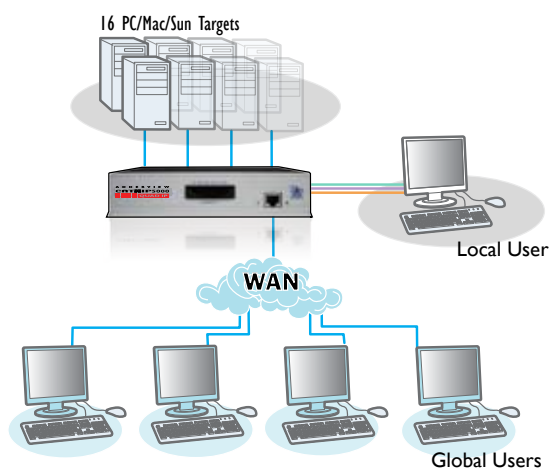
The AVX5016 IP allows you to configure 16 separate users internally with unique access privileges all of which are stored within the switch.

Open Architecture

Adder's continuous improvement policy further ensures your system against future hardware changes - Adder offers free firmware updates for the life of the product. Furthermore, Adder's open architecture design philosophy will not tie you in to specific manufacturer's equipment.

ADDER.net

Network management software, automating the task of managing your network control hardware.



Local, Remote and Global Computer Control

ADDERView CATxIP 5000

High density fully featured USB, and Video control for local, remote and global users



TECHNICAL SPECIFICATIONS

Video Modes	Support for standard PC, Sun and Mac video modes up to a resolution of 1600 x 1200 @ 60Hz. DDC emulation supported via connected Computer Access Modules (CAMs).
Hardware compatibility	Video, mouse and keyboard for PC, Sun, Mac, RS/6000, Alpha and SGI computers using PS/2, USB or Sun flash upgradable Computer Access Modules (CAMs).
OS compatibility	Operates with all currently known software and operating systems including all Windows versions, DOS, Linux, Unix, BSD, all Sun OS, all Mac OS and NetWare.
Local console	Video: HDD15 socket Keyboard/Mouse: USB type A sockets
Connections	Local console connections as stated above. CATx computer connections: all RJ45 style. 10/100 auto-sensing Ethernet network port: RJ45. Power connection: 2.5mm DC jack (5V DC, 2.5A). RS232 triggered power switching and syncing: DB9 plug
Physical design	Compact 1U high metal case construction suited for rack mounting (rack mount kits available). Width: 198mm/7.92", Height: 44mm/1.76", Depth: 120mm/4.8". Weight: 0.77kg/1.70lbs.
Power supply	Mains adaptor with IEC style power lead (included). Input: 100-240VAC 0.5A 50-60Hz Output: 5VDC 2.5A
Operating temperature	0Deg C to 40Deg C / 32Deg F to 104Deg F
Approvals	CE, FCC
Order Codes	AVX5016IP-XX (CATx IP 16 port version) (XX= Mains Lead Country Code: UK = United Kingdom US = United States EURO = Europe AUS = Australia) CAM: Computer Access Module Order Codes One required per connected computer. CATX-PS2 (PS/2 only). Connectors: Analog video, PS/2-style keyboard and PS/2-style mouse. CATX-USB (USB only). Connectors: Analog video and USB keyboard/mouse.
Rackmount Options	Single Unit Rack Brackets: RMK4S Double Unit rack brackets: RMK4D

Local, Remote and Global Computer Control



ADDER TECHNOLOGY

Technology House, Trafalgar Way, Bar Hill,
Cambridge, CB23 8SQ UK
Tel: +44 (0)1954 780044 Fax: +44 (0)1954 780081
email: sales@adder.com www.adder.com

All trademarks acknowledged. Specifications subject to change without notice.
March 2010

ADDER CORPORATION

29 Water Street
Newburyport, MA 01950 USA
Tel: +1 888 932 3337 Fax: +1 888 275 1117
email: usasales@adder.com www.adder.com



www.leunig.de

Leunig GmbH

Wilhelm-Ostwald-Straße 17
D-53721 Siegburg
Tel.: +49-2241-1766-0
Fax: +49-2241-1766-99
www.leunig.de

ADDER TECHNOLOGY ASIA PACIFIC

6 New Industrial Road
#07-01 Hoe Huat Industrial Building, Singapore 536199
Tel: +65 6288 5767 Fax: +65 6284 1150
email: asiasales@adder.com www.adder.com