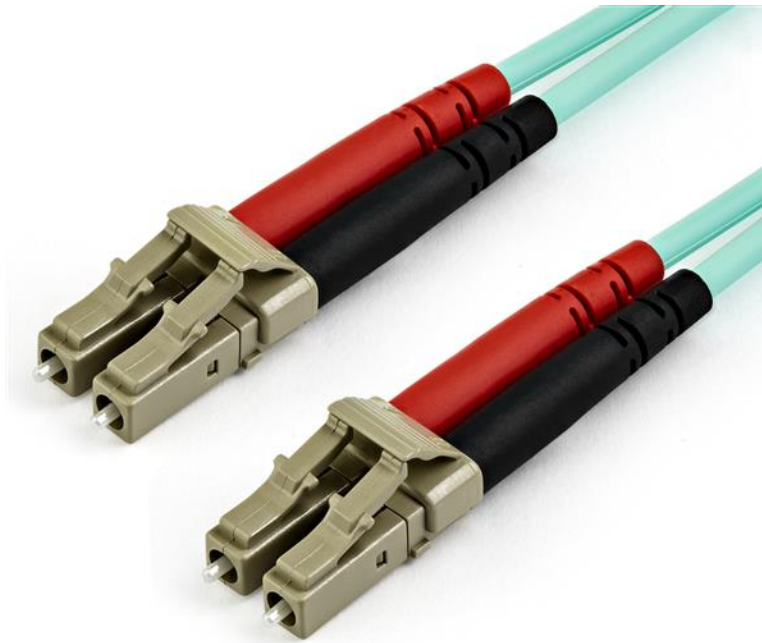


# 10 m OM4 LC to LC Multimode Duplex Fiber Optic Patch Cable

Product ID: 450FBLCLC10



This LC to LC Multimode Duplex Fiber Optic Patch cable offers reliable connections for 40GBase-SR4, 100GBase-SR10, SFP+ and QSFP+ transceivers in your 40 and 100 Gigabit networks.

## Built for Performance

With laser-optimized multimode fiber (LOMMF), the patch cable is ideal for 850 nm and 1350 nm Vertical Cavity Surface Emitting Laser (VCSEL) and LED sources. The high-speed connectivity on the aqua fiber-optic cable provides a high-bandwidth solution for your data centers or high-density applications.

## Maximum Compatibility

This fiber-optic patch cord is backward compatible with your existing 50/125 equipment, ensuring a reliable connection with legacy LANs.

## **High Quality Construction**

Housed in a LSZH (Low-Smoke, Zero-Halogen) flame retardant jacket, this fiber-optic cable ensures minimal smoke, toxicity and corrosion when exposed to high sources of heat, or in the event of a fire. It's the best choice for a wide range of environments, including industrial settings, central offices and schools, as well as residential settings where building codes are a consideration.

Each OM4 fiber cable is also individually tested and certified to be within acceptable optical insertion loss limits for guaranteed compatibility and 100% reliability.

450FBLCLC10 is backed by a StarTech.com lifetime warranty and free lifetime technical support.

### Certifications, Reports and Compatibility



### Applications

- Use in 40/100 Gigabit Ethernet and fiber-channel applications
- High-speed connectivity for high-density applications

### Features

- Reliable connection to SFP+ and QSFP+ transceivers in 40 and 100 Gigabit networks
- Provides high bandwidth with laser-optimized multimode fiber (LOMMF)
- Easily connect to your VCSEL and LED sources
- Backward compatible with your existing 50/125 equipment
- Built with a Low-Smoke, Zero-Halogen flame retardant jacket for a safe connection

<b>Hardware</b>	Warranty	Lifetime
	Fiber Size	50/125
	Fire Rating	LSZH Rated (Low Smoke Zero Halogen)
<b>Performance</b>	Cable Rating	10Gbps / 40Gbps / 100Gbps
	Fiber Classification	OM4
	Maximum Data Transfer Rate	100Gbps
	Type	Multi Mode
	Wavelength	850nm
<b>Connector(s)</b>	Connector A	1 - Fiber Optic LC Duplex Male
	Connector B	1 - Fiber Optic LC Duplex Male
<b>Environmental</b>	Humidity	0~90% RH
	Operating Temperature	-20°C to 60°C (-4°F to 140°F)
	Storage Temperature	-20°C to 60°C (-4°F to 140°F)
<b>Physical Characteristics</b>	Cable Length	10 m [32.8 ft]
	Color	Aqua
	Product Height	0 mm [0 in]
	Product Length	10 m [32.8 ft]
	Product Width	0 mm [0 in]
	Weight of Product	131 g [4.6 oz]
<b>Packaging Information</b>	Package Height	22 mm [0.9 in]
	Package Length	20 cm [7.9 in]
	Package Width	22 cm [8.7 in]
	Shipping (Package) Weight	142 g [5 oz]
<b>What's in the Box</b>	Included in Package	1 - 10 m Fiber Optic Cable

Product appearance and specifications are subject to change without notice.