

DELL Technologies

LATITUDE

9440 2-IN-1

World's most collaborative
commercial PC²⁰



LATITUDE

9440 2-IN-1

WORLD'S MOST COLLABORATIVE COMMERCIAL PC²⁰

A 14" ultra-premium 2-in-1, designed to offer the industry's best collaboration and connectivity²⁰ with intelligent performance, built-in security and privacy.

For C-suite executives, Account Managers, Consultants, Small and Medium business owners, etc. driven to build and grow the business with strategic vision. They need the best mobile performance, collaboration tools and connectivity to work anywhere.



World's smallest 14" commercial PC²⁰ with the world's best screen-to-body ratio on a 14" commercial ultra-premium PC²¹. Offers up to 7% more viewing area than competition in ultra-premium commercial PCs²¹.

World's 1st Haptic Collaboration Touchpad²⁰
Hear and feel customizable feedback every time you click the touchpad or use critical Zoom conferencing controls. Quickly access mic, camera, share screen, & chat controls during online meetings²⁵.

World's first commercial PC with a Zero-Lattice Keyboard with battery-saving backlight technology²⁰.
Wider, curved keys for improved tactile response and efficient and comfortable typing. Mini-LED backlight technology reduces the keyboard's power usage by up to 75% and increases battery life²⁰.

World's first PC to have low-carbon, 75% recycled aluminum in the lid and palmrest of the device²³.
Reduces the material's carbon footprint by up to 90%²⁹.



Premium materials and finishes
Meticulously crafted using a high-precision CNC machining process. A stunning graphite color and seamless, diamond-cut edges complete the elegant look.

Intelligent Audio with Neural Noise Cancellation
Collaborate confidently with AI-based background noise elimination.

ExpressSign-in
Wake your system when you approach and lock it when you step away.



Speakerphone
Hear every detail in your meetings with intelligent tuning and quad speakers, including two top and two bottom-firing speakers.

Dell Optimizer's Intelligent features
Onlooker Detection – alerts you of onlookers and protects data on screen.
Look-away Detect – knows when you're not looking at screen and dims for privacy & battery savings.

Hardware controlled camera, mute keys
Stay in charge of your privacy with hardware level controls for the camera shutter (F9) and mic mute (F4).

Utilize two networks at once with ExpressConnect, world's 1st simultaneous multi-network connection for faster data and video downloads¹⁹.

Flexible form factor
Work your way with a 2-in-1 form factor featuring laptop, tent, stand, or tablet mode.

FHD IR camera & SafeShutter
Look great on every call with an FHD IR camera and protect your privacy with automatic SafeShutter.

Enterprise-level security with SafeBIOS and SafeID, serviceability, and durability. Passes MIL-STD 810H tests.

Advanced Thermals
Maximize performance with dual fan rear-venting thermals system so hot air blows away from the user. Customize thermals to your needs using Dell's user selectable thermal tables.

Multi-task for evolving demands. An Intel® Evo™ Design with 13th Gen Intel® up to Core™ i7 vPro processors, up to 64GB LPDDR5x memory and up to 2TB SSD.

Ready when you are
Up to 35% within 20 min with ExpressCharge Boost¹⁷.

See important information on last page

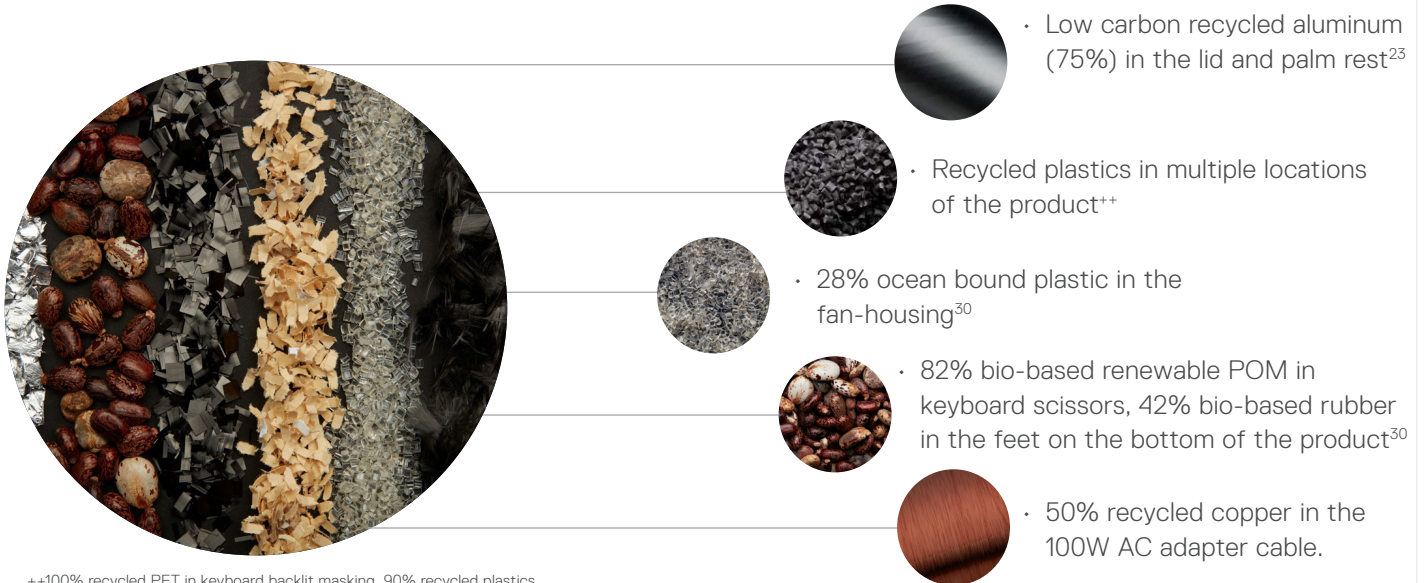
9440 2-IN-1

Sustainability on Dell Latitude 9440 2-in-1

Delivering innovative technology and solutions to reduce our environmental impact, for ourselves and our customers.

Sustainable Materials

Our use of sustainable materials helps reduce the environmental impact of making and recycling them.



++100% recycled PET in keyboard backlit masking, 90% recycled plastics in battery housing, AC adapter exterior contains 50% PCR resins in the 60W and 65W adapters and 90% PCR resins in the 100W adapter, 80% recycled PET in keyboard membrane, 75% recycled polycarbonate plastic in keyboard keycaps, 30% PCR in speaker housing.

Packaging Innovation

Ships in premium **100% recycled or renewable packaging that is also 100% recyclable²⁴**. Multipack shipping available on eligible products.

Ecolabels

Eco-labeling standards drive sustainability further by helping customers understand electronic products and the companies that make them. This product meets the following standards:



Recycle

Securely and responsibly retire your IT equipment with Dell regardless of brand, in support of a circular economy. Learn more at Dell.com/Recycle

See how we are reducing the impact of our products and solutions Dell.com/Sustainable-Devices



LATITUDE

9440 2-IN-1

Dell Optimizer

We make it intelligent. You make it yours.

In a work-from-anywhere world, powering the world's most intelligent commercial PCs* is not enough, Dell Optimizer is extending personalized intelligence to the rest of the Dell ecosystem.

Dell Optimizer lets you accomplish anything with built-in intelligence that learns and adapts to the way you work.



Elevate everyday work with personalized performance extending from your Latitude to the devices within your workspace.



Collaboration at your fingertips

Hear and feel customizable feedback every time you click the touchpad or use critical Zoom conferencing controls¹⁸.



An intelligent ecosystem

Enjoy easy pairing and management of your Dell monitors and accessories with the **integration of Dell Display Manager and Dell Peripheral Manager**.



Improved app performance

Analyzes how you use your preferred apps to boost performance.



Intelligent privacy anywhere

This technology lets you texturize your screen when an intruder is detected and dims your PC when you look away. It also wakes your PC when your approach and locks it when you walk away.



Unmatched connectivity

ExpressConnect* provides the world's first simultaneous multi-network connection** that joins the best network* available.

With Dell Optimizer, no telemetry data is sent without explicit consent.

[Click here to learn more about Dell Optimizer.](#)



Up level audio

Intelligent Audio delivers sound and mic enhancements reducing background noise using neural noise cancellation and voice quality monitoring.



Extended power

ExpressCharge analyzes your power usage habits to improve PC battery utilization and extends run times by charging your system faster when you need a boost in power.

9440 2-IN-1

Make yourself more resilient to cyberattacks with Dell Trusted Devices.

Attacks are inevitable. In fact, 69% of organizations report a cyber-attack due to a poorly managed internet-facing asset in the prior 12 months.* Dell Technologies understands that today's security challenges include managing an evolving threat landscape with a modern work environment in mind. With Dell commercial devices, catch and repel malicious activity before it compromises your system. Latitude, one of the industry's most secure commercial PCs**, offers layers of security features to keep you protected and give you visibility to threats for swift action.

Secure anywhere-work with hardware and firmware defenses built for our hyper-distributed world.



Stay protected from evolving threats

Our unique BIOS and firmware verification provides greater security than other PCs. Assess a corrupt BIOS, repair it and gain insights that reduce exposure to future threats.



Spot ticking timebombs

Indicators of Attack, an early-alert feature offered only by Dell, scans for behavior-based threats before they can do damage.



Detect chassis tampering

Detect unauthorized access, e.g., malicious implanted hardware or software, data/component theft inside system chassis.



Secure end user credentials

SafelD, a dedicated FIPS Level 3 certified security chip, keeps user credentials hidden from malware.



Be safe from first boot

Rigorous, state-of-the-art supply chain controls reduce the risk of product tampering. Optional additions like the Dell-unique Secured Component Verification provide additional assurance of device integrity.

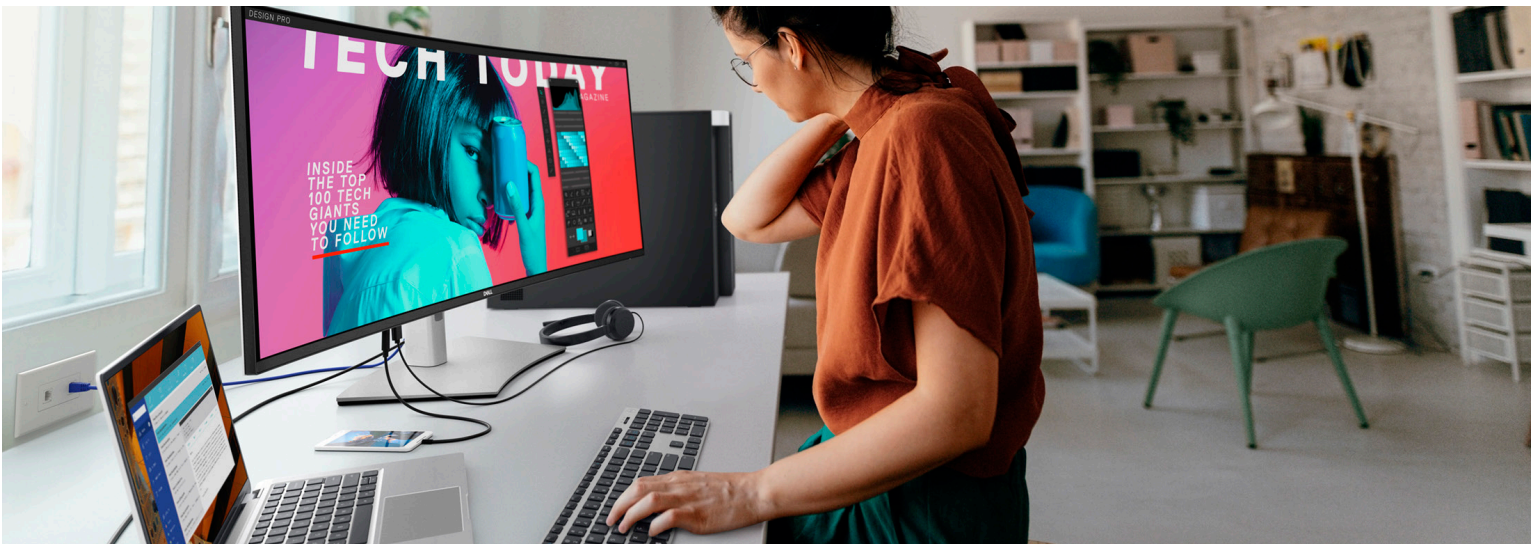


Protect data everywhere

Stay protected against advanced threats with optional software-based protections from our ecosystem of best-of-breed partners (CrowdStrike, VMware Carbon Black, Secureworks, Netskope and Absolute).

*ESG Survey: Security, Hygiene and Posture Management, Jan. 2022

**Dell internal analysis, September 2022. Not all features available with all PCs. Additional purchase required for some features



RECOMMENDED SOLUTIONS

OFFICE



UltraSharp 40 Curved WUHD Monitor - U4021QW

Redefine productivity on this revolutionary 40" curved WUHD 5K2K monitor that delivers exceptional color and clarity.



Dell Thunderbolt™ Dock - WD22TB4

Modular thunderbolt dock with swappable modules for easy upgrades and SuperBoost technologies for fast charging.



Ultrasharp Webcam - WB7022

Elevate your video conferencing experience with the world's best image quality 4K webcam²⁶ that optimizes your visuals with a large 4K Sony STARVIS™ CMOS sensor and AI Auto-Framing.



Premier Wireless ANC Headset - WL7022

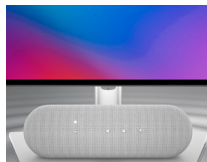
Collaborate with ease anywhere with this Teams certified wireless headset which offers active noise cancellation and smart sensors that automatically mute and unmute your call.

HOME



Dell UltraSharp 32 4K Video Conferencing Monitor - U3223QZ

Featuring Dell's most intelligent webcam in a 31.5" 4K video conferencing monitor, this is the first monitor in its class with IPS Black panel technology³¹.



Dell Speakerphone - SP3022

Experience crystal-clear conference calls with the world's most intelligent Microsoft Teams-certified speakerphone²⁷.



Dell Dual Charge Dock - HD22Q

The world's first laptop docking station with a wireless charging stand for Qi-enabled smartphones or earbuds²⁸. Cellular device not included with purchase.



Dell Premier Multi-Device Wireless Keyboard and Mouse - KM7321W

Experience superior multitasking features with a stylish and comfortable premium keyboard and mouse combo. Complete your tasks powered by one of the industry's leading battery lives at up to 36 months³².



Dell Premier Rechargeable Active Pen - PN7522W

Write naturally and create with precision with a rechargeable premium active pen featuring a tile location function for complete peace of mind.

ROAM



Dell 14 Portable Monitor - C1422H

Experience dual-screen productivity anywhere with Dell's first-ever 14" portable monitor.



Dell Premier Rechargeable Wireless Mouse - MS7421W

Get uninterrupted productivity with a rechargeable mouse that offers up to six months battery life on a full charge. Connect up to three devices and recharge in just two minutes for a full day's work.



Dell 7-in-1 USB-C Multiport Adapter - DA310

A compact multiport 6-in-1 adapter that offers video, network, data connectivity and up to 90W power pass-through for your laptop.



Dell EcoLoop Leather Sleeve 14

Designed for on-the-go productivity and protection, the Dell EcoLoop Pro Sleeve is made of eco-conscious material to complement any lifestyle.

9440 2-IN-1

FEATURE	TECHNICAL SPECIFICATION
MODEL NUMBER	9440 2-in-1
PROCESSOR OPTIONS¹	13 th Gen Intel® Core™ Processors up to i7 vPro, RPL-U
OPERATING SYSTEM¹	Microsoft® Windows 11 Home 64 bit Microsoft® Windows 11 Pro 64 bit Microsoft® Windows 11 Downgrade (Windows 10 Pro 64 bit)
MEMORY OPTIONS^{1,2,3}	Up to 64GB LPDDR5x SDRAM 6400 MT/s (on board)
CHIPSET¹	Integrated with the Processor
INTEL RESPONSIVENESS TECHNOLOGIES^{1,7}	Intel® Rapid Storage Technology
GRAPHICS^{1,8}	Intel® Iris® Xe® Graphics (Integrated)
DISPLAY¹	2-in-1 14" 16:10 QHD+ (2560 x 1600) Touch, Battery-saving, IPS, Anti-reflective and Anti-Smudge, Corning® Gorilla Glass® 6 DX, 500 nits, sRGB 100%, Comfort View Plus Low Blue Light, Intelligent Privacy, SafeShutter, Active Pen Support
STORAGE^{1,3}	SED SSD M.2 2230 PCIe/NVMe Class 35 256GB SSD M.2 2230 PCIe/NVMe Class 35 256GB SSD M.2 2230 PCIe/NVMe Class 35 512GB SSD M.2 2230 PCIe/NVMe Class 35 1TB SSD M.2 2230 PCIe/NVMe Class 25 2TB
SECURITY¹	Dell Security Features: Dell SafeBIOS - Verifies that BIOS is good using a secure off-host source, and if the test fails, captures and stores a copy in a secure area on the PC Dell SafeBIOS - Indicators of Attack - Alerts when malicious activity is detected Dell SafeID - Dedicated FIPS Level 3 security chip secures end user credentials ¹ - TCG Certified Dell SafeSupply Chain - Optional tamper evident packing and pre-imaging HDD wipes to NIST standards from a secure Dell facility. Dell SafeShutter™ - Automatically closes the camera shutter when not in use, so user privacy is ensured Dell Intelligent Privacy powered by Dell Optimizer 4.0 - Texturizes the screen when a shoulder surfer tries to peek, dims the screen when user is disengaged. Intel ME Firmware Authentication (with Intel vPro) – Verifies that critical firmware is good using a secure off-host source Face IR camera (Windows Hello compliant) with ExpressSign-in 1.0 (Proximity Sensor), ExpressSign-in 2.0 (Camera Sensing) Optional Windows Hello compliant fingerprint reader in power button Optional Touch Fingerprint Reader (in Power Button) with Control Vault 3.0 Advanced Authentication with FIPS 140-2 Level 2 Certification Factory Installed Dell Command Update Dell Performance Dell Trusted Devices Additional Software Security Features: Netskope™ Cloud Access Security Broker (CASB) Netskope™ Secure Web Gateway Netskope™ Zero Trust Private Access Vmware® Carbon Black Endpoint Standard Vmware® Carbon Black Endpoint Standard + Secureworks® Taegis™ XDR Bundle Vmware® Carbon Black Endpoint Advanced Vmware® Carbon Black Endpoint Enterprise Secureworks® Taegis™ XDR VMware® Workspace ONE Standard VMware® Workspace ONE Advanced VMware® Workspace ONE Enterprise Absolute® Endpoint - Visibility Absolute® Endpoint - Control Absolute® Endpoint - Resilience
DOCKING¹	Dell Business Thunderbolt Dock - WD22TB4 Dell Dual Charge Dock - HD22Q Dell USB-C Dock - WD19S Dell Performance Dock - WD19DCS Dell Universal Dock - HD22Q Dell 7-in-1 USB-C Multiport Adapter - DA310
MULTIMEDIA¹	SafeShutter™ (electro-mechanical camera shutter) FHD IR Camera with Optional Built-in Collaboration Features Experience: Low light capability + TNR + Intelligent Privacy + IPU6 + Proximity Sensor + Intel Camera Sensing Technology (ExpressSign-in 2.0™)

FEATURE	TECHNICAL SPECIFICATION
MULTIMEDIA¹	2 x Top Firing Premium Speakers, 2 x Bottom Firing Premium Speaker, Waves MaxxAudio Pro, Smart Amplifier 2 x Noise Canceling Microphones Universal Audio Jack
BATTERY OPTIONS¹	60 Whr ⁶ Li-Ion, ExpressCharge Boost™, ExpressCharge 1.0™, & Long Life Cycle capable, 3-cell
POWER OPTIONS¹	65W Type-C Power Adapter 60W Type-C Ultralight Mini Power Adapter 100W Type-C Power Adapter
CONNECTIVITY OPTIONS¹	Microsoft Modern Standby compliant WiFi Display (Miracast) ¹⁴ Wireless LAN Options:⁸ Intel® Wi-Fi 6E (6 where 6E unavailable) AX211, 2x2, 802.11ax, MU-MIMO, Bluetooth 5.3 ⁹ Mobile Broadband Options:¹⁰ 5G - Intel® 5000 Advanced 5G WWAN (DW5931), eSIM, Worldwide 5G - Intel® 5000 Advanced 5G WWAN (DW5931), No eSIM, China and Turkey 5G - Intel® 5000 Advanced 5G WWAN (DW5931), eSIM capable, AT&T, Verizon, T-Mobile - US only
PORTS, SLOTS & CHASSIS¹	3 x Thunderbolt™4 with Power Delivery & DisplayPort (USB Type-C) 1 x External nano SIM card tray option (WWAN only) 1 x Universal Audio Jack 1 x Optional Touch Fingerprint Reader in Power Button Wedge Lock slot
TOUCHPAD	3-panel Haptic Collaboration Touchpad
DIMENSIONS & WEIGHT^{1,15}	12.2" x 8.46" x 0.64" (rear) / 0.59" (front) 310.5mm x 215mm x 16.28mm (rear) / 14.92mm (front) Screen to Body: 91.5% Starting weight: 3.38lbs / 1.535kg
REGULATORY AND ENVIRONMENTAL COMPLIANCE¹	Regulatory Model: P142G (2-in-1) Regulatory Type: P142G001 (2-in-1) ENERGY STAR EPEAT Registered. For specific country participation and rating, please see www.epeat.net Halogen-Free/Arsenic-Free BFR/PVC free (not including PSU) ⁹
INPUT¹	10-Finger Touch Display 3-panel Haptic Collaboration Touchpad Zero-Lattice Spill Resistant Keyboard with Battery-Saving Backlit Dell Premium Rechargeable Active Pen PN7522W (optional, sold separately)
SENSORS	Low power vision AI based user presence detection, Windows auto brightness, Gyroscope, eCompass/Magnetometer, Accelerometer, GPS (via WWAN Card only), Screen rotate support, Hall effect sensor, Sensor hub, Ambient Light Sensor, Adaptive Thermal Performance (via Gyroscope/Accelerometer), Dell ExpressSign-In 1.0 (via Proximity Sensor), Dell ExpressSign-in 2.0 (via Intel Camera Sensing Technology), Wake/Power on with lid open
SYSTEMS MANAGEMENT¹	Dell Optimizer Intel® vPro™ Technology (iAMT 12) (optional, requires Intel WiFi® Link WLAN and a vPro compatible processor), Dell Client Command Suite available (dell.com/command), Factory Installed Dell Client Command Update, Dell Command.
WARRANTY AND SERVICE¹	Limited Onsite Hardware Warranty ⁴ , standard 1 year, optional 3, 4 and 5 year hardware warranty extensions, and 3-5 year Dell ProSupport contracts available ¹²
PERIPHERAL ECOSYSTEM¹	Powerful accessories designed and tested for Latitude 9440 enable seamless productivity for On-the-Go Professionals, wherever work takes them.
SUSTAINABILITY	Low carbon 75% recycled aluminum in top cover and palmrest Total 35% sustainable materials in keyboard - 75% recycled polycarbonate plastic in keyboard keycaps, 82% bio-based renewable POM in scissors, 80% recycled PET in membrane, 100% recycled PET in backlit masking. 42% bio-based rubber in the feet on the bottom of the device 30% PCR in speaker housing 90% recycled plastics in battery housing 28% ocean-bound plastic in fan housing 50% recycled copper wire for DC cable in 100W Type-C power adapter 90% PCR resins in 100W Type-C power adapter 50% PCR resins in 65W Type-C power adapter 50% PCR resins in 60W Type-C Ultralight Mini power adapter Latitude 9440 2-in-1 chassis designed with low carbon aluminum, reducing the material's carbon footprint by 90% Shipped in 100% recycled or renewable packaging
WHAT'S IN THE BOX	Latitude 9440 2-in-1, Power Adapter of your selection, Power cord, USB-C to USB-A Nano Dongle, Documentation

Product Disclosures:

* Based on Dell analysis, October 2022. Dell Optimizer not available in OptiPlex 3000 series, Latitude Chromebook Enterprise, and Linux-based devices. Feature availability and functionality may vary by model. For more details visit: <https://www.delltechnologies.com/asset/en-us/solutions/business-solutions/technical-support/dell-optimizer-features-availability-matrix.pdf.external>

** Simultaneous multi-network connection (or Connection based teaming) is a new connectivity feature under ExpressConnect. It simultaneously sends and receives data and video traffic using two or more wired or wireless connections. Simultaneous multi-network connection works with wired and wireless networks. For select Dell platforms, a USB Wi-Fi adapter is required to connect a second Wi-Fi network. Based on Dell internal analysis, September 2021.

1 Offering may vary by country and by configuration and Operating System

2 A 64-bit operating system is required to support 4GB or more of system memory.

3 GB means 1 billion bytes and TB equals 1 trillion bytes; actual capacity varies with preloaded material and operating environment and will be less.

4 Limited Hardware Warranty: For copy of Limited Hardware Warranty, write Dell USA LP, Attn: Warranties, One Dell Way, Round Rock, TX 78682 or see www.dell.com/warranty.

5 Tap to Pay will not be supported. Tap to Login is only supported with USH SKU

6 The stated Watt Hour (Whr) is not an indication of battery life

7 Intel Rapid Storage Technology requires a HDD, mSATA, or an SSD, as primary storage device. See OS requirements

8 Wireless antenna and module available only at time of system purchase. Wi-Fi6e (supporting 6GHz spectrum) depends on the Regional Regulatory & Certifications as well as on OS /Routers/ APs/ Gateways that need to support Wi-Fi6E technology.

9 Dell Latitude 9420 are brominated flame retardant free (BFR-free) and polyvinyl chloride free (PVC-free); meeting the definition of BFR-/PVC-free as set forth in the iNEMI Position Statement on the 'Definition of Low-Halogen Electronics (BFR-/CFR-/PVC-free)'. Plastic parts contain less than 1,000 ppm (0.1%) of bromine (if the Br source is from BFRs) and less than 1,000 ppm (0.1%) of chlorine (if the Cl source is from CFRs or PVC or PVC copolymers). All printed circuit board (PCB) and substrate laminates contain bromine/chlorine total less than 1,500 ppm (0.15%) with a maximum chlorine of 900 ppm (0.09%) and maximum bromine being 900 ppm (0.09%).

10 Mobile Broadband antenna and module (for 2-in-1 devices) available only at time of system purchase. Mobile Broadband subject to service provider's broadband subscription and coverage area; additional charges apply. eSim technology subject to regional carrier/service provider availability & service provider's data plan subscription; additional charges apply.

11 Onsite Service after Remote Diagnosis: Remote Diagnosis is determination by online/phone technician of cause of issue; may involve customer access to inside of system and multiple or extended sessions. If issue is covered by Limited Hardware Warranty (www.dell.com/warranty) and not resolved remotely, technician and/or part will be dispatched, usually within 1 business day following completion of Remote Diagnosis. Availability varies. Other conditions apply.

12 Dell Services: Availability and terms of Dell Services vary by region. For more information, visit www.dell.com/servicesdescriptions. For more information, visit www.dell.com/service-descriptions.

13 GB means 1 billion bytes and TB equals 1 trillion bytes; significant system memory may be used to support graphics, depending on system memory size and other factors.

14 Miracast Wireless Technology: Requires a compatible media adapter (sold separately and can be integrated into the display) and an HDMI-enabled display.

15 Weights vary depending on configuration and manufacturing variability.

16 Available in US only.

17 ExpressCharge must be enabled within Dell Power Manager software. System must be powered off or in hibernation mode for ExpressCharge feature to function. After charging has reached the stated capacity, charging speed will return to normal speed. Recommended for use with the provided Dell power adapter; not recommended with a smaller capacity power adapter. Charging times may vary.

18 On Windows 10, haptic feedback can be customized within the Dell Optimizer app. On Windows 11, haptic feedback can be customized within the OS.

19 ExpressConnect available with Dell Optimizer software version 2.0 and onwards. Download the latest at <https://www.dell.com/support/home>.

Simultaneous multi-network connection (or connection-based teaming) is a new connectivity feature under ExpressConnect. It simultaneously sends and receives data and video traffic using two or more wired or wireless connections. Based on Dell internal analysis, October 2021.

20 Based on Dell Analysis, October 2022.

21 Based on Dell internal testing, October 2022. Applicable to Windows PCs only.

22 Wi-Fi 6E requires Windows 11 Operating system and compatible router. Router requires a separate purchase. Wi-Fi 6E connectivity is only available in select locations. Check availability with your service provider.

23 Based on Dell Analysis, October 2022. Applicable to Windows PCs only.

24 71.9% recycled content and 28.1% renewable materials in the form of FSC fibers. Percentages may vary slightly by region. Excludes optional items added to order and included in box. Paper packaging materials can be recycled via municipal recycling, where available. System bag is made from recycled plastic and can be recycled along with other thin plastics. See local recycling guidelines.

25 Haptic feedback can be customized via Win11 OS settings or Dell Optimizer on Win10 OS. To enable the collaboration touchpad, the user must have Zoom and Dell Optimizer on their PC. Collaboration touchpad icons are only visible during a Zoom call. Collaboration icon settings can be customized within Dell Optimizer. Compatible conferencing platforms are subject to change. Please see Technical Guidebook for more detailed instructions.

26 Based on an independent user study of 20 experienced webcam users commissioned by Dell. Participants evaluated the brightness, color saturation and sharpness of live web meeting video streamed with the Dell UltraSharp webcam and leading competitive external 4K personal conferencing webcams in uniform, low and high contrast lighting conditions (No physical webcams nor brands were shown to participants) (June 2021).

27 Based on Dell analysis comparing against competitive personal conferencing speakerphones, September 2021.

28 For Qi-enabled smartphones and earbuds. Based on analysis of competitive products, using publicly available data – November 2021.

29 Based on internal analysis, November 2022

30 Based on internal testing as of Feb 2023

31 Based on Dell analysis of publicly available data, August 2021.

32 Based on Dell analysis of battery life usage model calculations, Nov. 2020. Results vary depending on use, operating conditions and other factors.