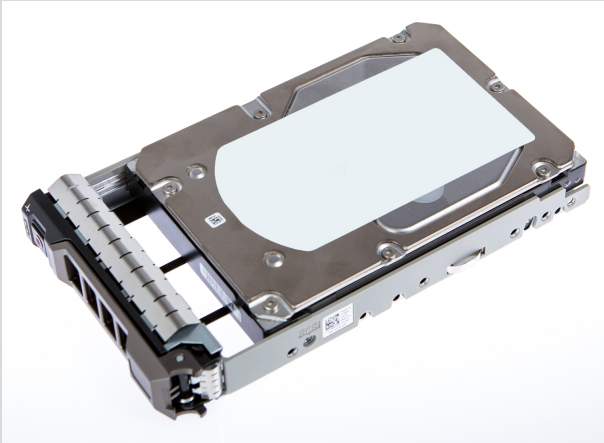




Origin Storage HDD, Hot Swap, 4TB, 7200RPM, 3.5 inch (8.9cm), 12G NLSAS



Key Features

- 100% hardware compatible HDD / SSD
- Plug & Play solution
- Complete kit incl. hot swap caddy
- Does not invalidate OEM warranty
- 5 Years advanced replacement warranty

Origin Storage Ltd. manufactures a comprehensive range of compatible storage solutions for many branded servers, laptops, desktops and desktops. All compatible HDD and SSD solutions come with up to 5 years advanced replacement warranty and free pre- and post-sales technical support. Our offering includes 100% hardware compatible storage solutions in M.2, 2.5 inch and 3.5 inch form factors to suit your use cases with SATA, SAS or NVMe interfaces, and in a wide range of capacities and rotational speeds. All Origin Storage storage upgrades have been designed and tested for the specific system and, if necessary, mounted in the appropriate fitting kit / hot swap tray for an easy upgrade and 100% hardware compatibility (no software compatibility assured with tools like OpenManage or Insight Manager).

Product Details

Product	Origin Storage DELL-4000NLS/7-S17
Description	Origin Storage HDD, Hot Swap, 4TB, 7200RPM, 3.5 inch (8.9cm), 12G NLSAS
Article Number	DELL-4000NLS/7-S17
EAN-Code	5055146641728
OEM-Numbers	n/a

Main specifications

Type	Hot Swap Server Drive
Capacity	4.0TB
Form Factor	3.5 inch (8.9cm) inches
Interface Type	SAS
Spindle Speed	7200 RPM
Cache	256 MB
Hardware Compatibility	Dell PowerEdge R230, PowerEdge R330, PowerEdge R430, PowerEdge R530, PowerEdge R730, PowerEdge R730XD, PowerEdge R730XD XL, PowerEdge R730XL, PowerEdge R830, PowerEdge T330, PowerEdge T340, PowerEdge T430, PowerEdge T440, PowerEdge T630, PowerEdge T640 (G13 HDD Backplane), PowerVault NX3230
Warranty	5 Years Advance Replacement
Box Contents	HDD / SSD mounted in hot swap caddy

STORAGE - ENCRYPTED SOLUTIONS - MEMORY - ACCESSORIES



Weight ca. 1000 g

Customs Tariff Number 84717050

Country of Origin United Kingdom

STORAGE - ENCRYPTED SOLUTIONS - MEMORY - ACCESSORIES