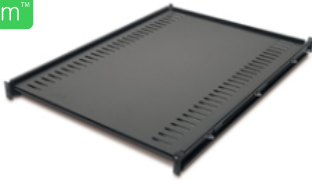


Product datasheet

Specifications



Fixed Shelf 250lbs/114kg Black

AR8122BLK

Overview

Presentation Fixed shelf to enable the mounting of tower units, monitors, and other equipment into the rack environment.

Lead time

Main

Number of rack unit 1U

Number of cables 1

Provided equipment Installation guide
Mounting hardware

Physical

Colour Black

Height 4.4 cm

Width 47 cm

Depth 66 cm

Net weight 8.18 kg

Mounting location Front

Mounting preference No preference

Mounting mode Rack-mounted

Maximum mounting depth 82.55 cm

Minimum mounting depth 67.31 cm

Permanent permissible load 113.40 kg static

Conformance

Standards EIA-310D

Packing Units

Unit Type of Package 1 PCE

Number of Units in Package 1 1

Package 1 Height 77.5 cm

Package 1 Width 57.6 cm

Package 1 Length	8.9 cm
Package 1 Weight	10.438 kg

Offer Sustainability

Sustainable offer status	Green Premium product
REACH Regulation	REACH Declaration
REACH free of SVHC	Yes
EU RoHS Directive	Pro-active compliance (Product out of EU RoHS legal scope) EU RoHS Declaration
Toxic heavy metal free	Yes
Mercury free	Yes
RoHS exemption information	Yes
Take-back	Take-back program available

Contractual warranty

Warranty	2 years repair or replace
----------	---------------------------

Recommended replacement(s)