

Panasonic
BUSINESS

TOUGHBOOK 20 mk2
Solution Guide

TOUGHBOOK





TOUGHBOOK 20 TWO PARTS: ONE STORY

WINDOWS 10 PRO FULLY RUGGED DETACHABLE WITH 10.1" OUTDOOR FULL-HD DISPLAY

The Panasonic TOUGHBOOK 20 delivers a new level of unrivalled versatility for mobile business computing as a fully-rugged detachable notebook. Offering the best of all worlds for mobile workers, the TOUGHBOOK 20 can be used in 6 different modes to meet every business need. With its glove-enabled touchscreen, up to 17 hour hot-swappable battery life and purpose-built vehicle mount and desktop port replicator, the Panasonic TOUGHBOOK 20 is an unrivalled mobile business machine.

- Intel® Core™ i5-7Y57 vPro™ processor
- Windows 10 Pro
- Intel® HD Graphics 615
- Next generation IPS outdoor display technology
- 10.1" high brightness WUXGA (1920x1200) display (up to 800cd/m²)
- Capacitive 10 finger multi-touchscreen
- Optional IP55 Digitiser (Dual-touch model)
- 120cm drop resistant (main unit), water and dust resistant (IP65)*
- Windows Hello compliant front camera
- Up to 8.5 hours battery life (MobileMark™ 2014)
- Up to 17 hours battery life with second battery (MobileMark™ 2014)
- User exchangeable battery
- Hot Swap function
- Flexible configurations (serial, smartcard, 2D barcode reader, NFC)
- Lightweight design, weights approx. 1.89kg
- 3 years standard warranty

*Tested by an independent third party lab following MIL-STD-810G and IEC 60529, Sections 13.4, 13.6.2, 14.2.5 and 14.3



TOUGHBOOK 20 ACCESSORY ECOSYSTEM



All accessories in this guide are fully tested and certified in the Panasonic factory by Panasonic engineers

DOCKING SOLUTIONS

TOUGHBOOK 20 Desktop Port Replicator

With full port replication.

Size: 315mm x 270mm x 50mm

Weight: 1.6 kg

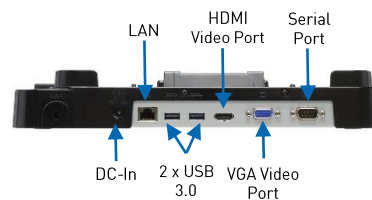
Part No: CF-VEB201U



Left side



2 x USB 2.0



Rear

TOUGHBOOK 20 Notebook Vehicle Dock (GJ)

Ruggedised vehicle dock with full port replication and optional dual antenna pass-through. Non-electronic version also available.

Full port replication:

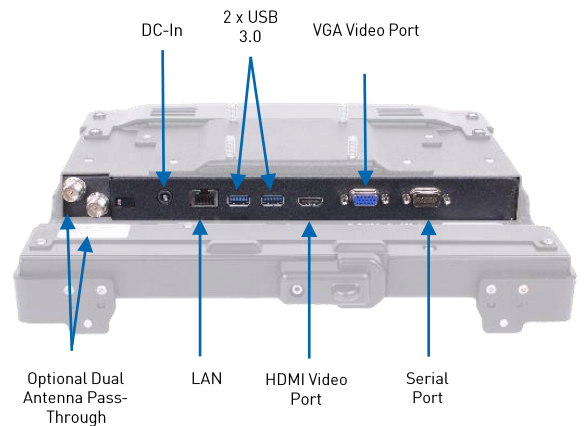
- 2 x USB 3.0; 1 x LAN; 1 x Serial; 1 x HDMI; 1 x VGA
- Optional dual antenna pass-through
- 16V DC-in

Size: 307 x 295 x 65 mm

Weight: 2.3 kg

Part Nos:

- PCPE-GJ20V07 No RF, keyed alike
- PCPE-GJ20V08 Dual RF, keyed alike
- PCPE-GJ20V10 Non electronic, keyed alike
- PCPE-GJ20V11 Non electronic, keyed to differ



All technical specifications are subject to change without notice.

DOCKING SOLUTIONS

TOUGHBOOK 20 Notebook Dock (Havis)

Full port replication:

- 2 x USB 3.0; 1 x LAN; 1 x Serial; 1 x HDMI; 1 x VGA
- Optional dual antenna pass-through
- 16V DC-in

Size: 635 x 280 x 244 mm

Weight: 1.95 kg

Part No:

- PCPE-HAV2003 Non-electronic, keyed alike
- PCPE-HAV2005 Without pass-through, keyed alike
- PCPE-HAV2006 With dual pass-through, keyed alike



TOUGHBOOK 20 Tablet Vehicle Dock – Slim Model

Reduced Port Replication:

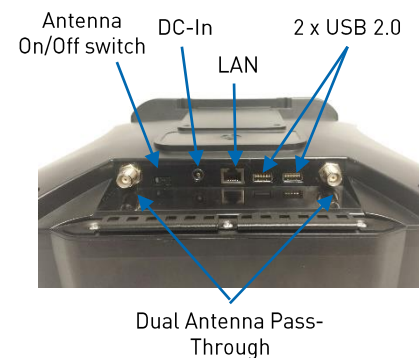
- 2 x USB 3.0
- 1 x LAN
- Optional Dual Antenna Pass-through
- 16V DC-In

Size: 297 x 269 x 76 mm

Weight: 1.0 kg / 2.1 lbs

Part Nos:

- PCPE-GJA2V01 Without pass-through, keyed alike
- PCPE-GJA2V02 With pass-through, keyed alike
- PCPE-GJA2V03 Without pass-through, keyed to differ
- PCPE-GJA2V04 With pass-through, keyed to differ
- PCPE-GJA2V05 Non electronic, keyed alike



TOUGHBOOK 20 Tablet Vehicle Dock – Expanded Model

Reduced Port Replication (as above)

Size: 297 x 259 x 109 mm

Weight: 1.4 kg

Part Nos:

- PCPE-GJA2V06 Without pass-through, keyed alike
- PCPE-GJA2V07 With pass-through, keyed alike
- PCPE-GJA2V08 Without pass-through, keyed to differ
- PCPE-GJA2V09 With pass-through, keyed to differ
- PCPE-GJA2V10 Non electronic, keyed alike



All technical specifications are subject to change without notice.

CARRYING SOLUTIONS

Panasonic Rotating X-Strap

Part Nos:

- CF-VST2011U – does not accommodate MSR
- CF-VST2031U – accommodates MSR



TOUGHBOOK 20 Tablet Rotating Hand Strap

Part No: PCPE-INF20H1



TOUGHBOOK 20 Always On Case

Size: 280 x 230 x 40mm

Weight: 375.3g

Part No: PCPE-INF20A0



TOUGHBOOK 20 Mobility Bundle

Contains shoulder strap and handle.

Part No: PCPE-INF20B1



TOUGHBOOK 20 Modulflex Case

Size: 280 x 230 x 40mm

Weight: 375.3g

Part No: PCPE-INF20MF



TOUGHBOOK 20 Tablet Case (Non Docking)

With screen flap and standard shoulder strap.

Size: 289 x 220 x 39 mm

Weight: 436g

Part No: PCPE-SYS1548



User Harness

Can be used with TOUGHBOOK 20 Always On and other cases with D-rings on each corner

Weight: 0.2 kg

Part No: PCPE-INFUVA1



TOUGHBOOK 20 Vehicle Holster

For temporary storage of laptops and tablets.

Dimensions: 326 x 293 x 48 mm

Weight: 588.8g

Part No: PCPE-SL20VH1



All technical specifications are subject to change without notice.

CARRYING SOLUTIONS CONTINUED

Multi Compact Case

Size: 425 x 320 x 90mm

Weight: 1 kg

Part No: PCPE-DCTBAG6



Legacy 16" Double Laptop Case

Size: 380 x 430 x 110 mm

Weight: Not provided

Part No: PCPE-CCI7652



Synergy 15.4" Laptop Rucksack

Size: 254 x 330 x 460 mm

Weight: 1 kg

Part No: PCPE-WENSYN1



Top Traveller PRO bag

Size: 410 x 300 x 170 mm

Weight: 1.4kg

Part No: PCPE-DCTBAG7



General Backpack

Size: 470 x 368 x 279 mm

Weight: 1.5 kg

Part No: PCPE-INFBPk1



All technical specifications are subject to change without notice.

POWER MANAGEMENT SOLUTIONS

Li-ion Battery Pack

Part No: CF-VZSU0QW



4-bay Battery Charger

Includes AC adaptor (CF-AA5713A)

Part No: CF-VCB201*

*E: UK; G: EU; T: Italy; D: Switzerland



Car charger (12 - 16VDC)

EIAJ & TypeA both, 80W

Part No: CF-LND80S - FD/BW*

*FD: with vehicle plug; BW: bare wire



Car charger (12 - 32VDC)

EIAJ & TypeA both, 80W

Part No: CF-LND8024 FD/BW*

*FD: with vehicle plug; BW: bare wire



Replacement AC Power Supply

Standard, 65W

Part No: CF-AA6413A*

*E: UK; G: EU; T: Italy; D: Switzerland



Mil Spec Vehicle Charger

90W (11 to 32VDC)

Part No: CF-LNDMLSTD



Car Charger For Forklifts

Part Nos:

- PCPE-LNDFH11: 70-110V
- PCPE-LNDFH32: 12-32V
- PCPE-LNDFH60: 20-60VDC



Replacement AC Power Supply

Part No: CF-AA5713A*

For MIL, 110W. For use with 4-bay Battery Charger

*E: UK; G: EU; T: Italy; D: Switzerland



All technical specifications are subject to change without notice.

CONNECTIVITY SOLUTIONS



Ruggedised LTE, WIFI and GPS router with cloud management

Part Nos:

- **PCPE-CRD96B1** - IBR900-600M router with 1yr cloud management bundle
- **PCPE-CRD96B3** - IBR900-600M router with 3yr cloud management bundle
- **PCPE-CRD96B5** - IBR900-600M router with 5yr cloud management bundle
- **PCPE-CRD96F1** - IBR900-600M router with 1yr cloud management bundle and vehicle antenna
- **PCPE-CRD96F3** - IBR900-600M router with 3yr cloud management bundle and vehicle antenna
- **PCPE-CRD96F5** - IBR900-600M router with 5yr cloud management bundle and vehicle antenna

LAN Port Saver Cable

Part No: PCPE-LANCA1



Semi-rugged cloud managed LTE router

Part Nos:

- **PCPE-CRD6001** - IBR600C Wi-Fi router with 3-year NetCloud Essentials support
- **PCPE-CRD6002** - IBR600C Wi-Fi router with 5-year NetCloud Essentials support
- **PCPE-CRD6003** - IBR600C Wi-Fi router with 3-year NetCloud Essentials Prime support
- **PCPE-CRD6004** - IBR600C Wi-Fi router with 5-year NetCloud Essentials Prime support
- **PCPE-CRD6005** - Cradlepoint 9 wire GPIO cable. Adds 4 GPIO, 2nd ignition sense, redundant power

Wireless USB Adaptor

Part No: PCPE-ZYWAN30



SECURITY & PROTECTION SOLUTIONS

LCD Screen Cleaning Cloth

Part No: CF-VNC001W

MOQ: 10 pcs



LCD Protective Film

Replacement for protective film pre-installed on TOUGHBOOK 20

Part No: CF-VPF31U



Kensington Lock

Part No: PCPE-KENLOK1



All technical specifications are subject to change without notice.

PRODUCTIVITY SOLUTIONS

Replacement TOUGHBOOK 20 Digitiser Pen

IP55 rated.

Part No: CF-VNP025U



Capacitive Stylus Pen

Part No: PCPE-LDYST02



Stylus Tether

Part No: PCPE-INFUVA2



Mini Rugged Wireless Keyboard

With Bluetooth.

Part No: PCPE-ACDS*

*UK1: UK; FR1: French;
GR1: German



Rugged Bluetooth Barcode Scanner

IP 54 rating.

Part Nos:

- PCPE-SMSD730 – Grey 1D barcode Scanner
- PCPE-SMSD750 – Grey 1D & 2D barcode scanner



USB External Disc Drive

Part No:

- PCPE-FCDVR06 - Blu-ray
- PCPE-FCDVR05 – CD/DVD



All technical specifications are subject to change without notice.

MOBILE PRINT / SCAN SOLUTIONS



MW Series A7 Lightweight Printers

The extremely small and lightweight MW printers are easy-to-operate mobile printing solutions for printing A7 documents. Works with a range of printing materials, including a 2-ply carbon copy paper, ideal for receipt and ticket printing.

Part Nos.: PCPE-BRP145B MW-145BT A7 Mobile Printer (USB & Bluetooth)



PJ7 Series A4 Mobile Printers

Perfectly dimensioned for your briefcase or computer bag, PJ7 series of compact, direct thermal printers can also be easily mounted in your vehicle. Take it out on the road and make sure your clients and customers receive those all-important documents in an instant. Available with 300 dpi print resolution, and with USB, Bluetooth or Wi-Fi.

Part Nos.:

- PCPE-BRPJ762 PJ762 A4 mobile printer, 200dpi with USB & Bluetooth
- PCPE-BRPJ763 PJ763 A4 mobile printer, 300dpi with USB & Bluetooth

RJ Series Rugged Mobile Printers

The RJ "Rugged Jet" series portable printers are ideal on-person devices for mobile workers needing to print labels and receipts on the go.

RJ2000 Series



- PCPE-BRP2030 RJ2030 2" ticket/receipt printer (USB & Bluetooth)
- PCPE-BRP2050 RJ2050 2" ticket/receipt printer (USB, Bluetooth & Wi-Fi)
- PCPE-BRP2140 RJ2140 2" ticket and label printer (USB & Wi-Fi)
- PCPE-BRP2150 RJ2150 2" ticket and label printer (USB, Bluetooth & Wi-Fi)

RJ3000 series



- PCPE-BRP3050 RJ3050 3" Mobile Receipt Printer (USB, serial, Bluetooth & Wi-Fi)
- PCPE-BRP3150 RJ3150 3" Mobile Receipt & Label Printer (USB, serial, Bluetooth & Wi-Fi)

RJ4000 series



- PCPE-BRPRJ30 RJ4030 4" Mobile Printer (USB, serial & Bluetooth)
- PCPE-BRPRJ40 RJ4040 4" Mobile Printer (USB, serial & Wi-Fi)

All technical specifications are subject to change without notice.

PROFESSIONAL SERVICES

Custom BIOS Services

Part No: PCPE-PSBIO5G

SIM Installation

Part No: PCPE-PSSIMIN

Information Management Bundle

IMEI, MAC, SIM, ASSET, Hardware Hash reporting.

Part No: PCPE-PSATAGB

Customer Branding

Logo badge on device casing or bezel.

Part No: PCPE-PSLOG0B

Bespoke Training Material

Part No: PCPE-PSBTM01

Price on Request.

Custom Imaging

Part Nos:

- PCPE-PSIMSP1 – Image Support / Creation (per day)
- PCPE-PSIMSP2 – On Site Image Support / Creation (per day)

Asset Tagging

Standard, using CPE label set.

Part No: PCPE-PSATAG1

Customised Deployment / Logistics

Part No: PCPE-PSCDL01

Price on Request.

Solution Packaging

Up to 10 items packaged together in a box.

Does not include custom designed case.

Part No: PCPE-PSSPACK

Autopilot Enrolment

Part No: PCPE-PSAUTOP

LIFECYCLE SUPPORT SOLUTIONS



Extended Warranty (5 years)

Panasonic's Extended Warranty provides an additional two years of warranty, helping you to minimise repair costs and maximise the life cycle of your TOUGHBOOK or Toughpad.

Part No.: CF-LESPEW* *4 / 5

Accidental Damage (3 or 5 years)

Panasonic's Accidental Damage Warranty provides protection against any eventuality out in the field for up to 5 years, providing you and your workforce with complete peace of mind.

Part No.: CF-LESPAD* *3 / 4 / 5 (4 & 5 year options include Extended Warranty)

Hard Drive Warranty (3, 4 or 5 years)

Panasonic's Hard Drive Warranty allows you to keep your original hard drive in the event of a replacement being required, or in the event that your device needs to be sent for repair, ensuring the security of your sensitive data.

Part No.: CF-LESPHDEW* *3 / 4 / 5

Docking Station Warranties (3, 4, or 5 years)

Extended Warranty:

CF-LESPPD*	*3 / 4 / 5	Panasonic Dock – 3, 4 or 5 years Extended Warranty
CF-LESPND*	*3 / 4 / 5	3rd Party Dock – 3, 4 or 5 years Extended Warranty

Accidental Damage:

CDS-LESPAD*	*3 / 4 / 5	Panasonic Dock – 3, 4 or 5 years Accidental Damage Warranty
CDS-LESPTAD*	*3 / 4 / 5	3rd Party Dock – 3, 4 or 5 years Accidental Damage Warranty

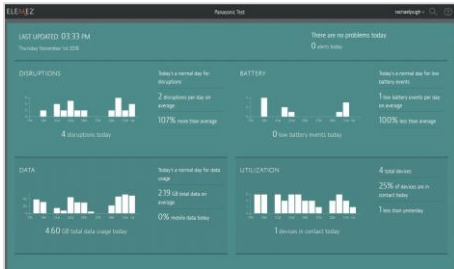
Smart Battery Warranty (3 years only)

Smart Battery Monitor software, powered by B2M Solutions, monitors device battery health in real-time. Smart Battery Monitor will alert you when batteries deployed in the field reach low capacity during normal use, so a replacement battery can be sent out in advance. Available at point of sale of device only.

Part No.: CF-LESPBASS3

All technical specifications are subject to change without notice.

TOUGHBOOK Smart Service

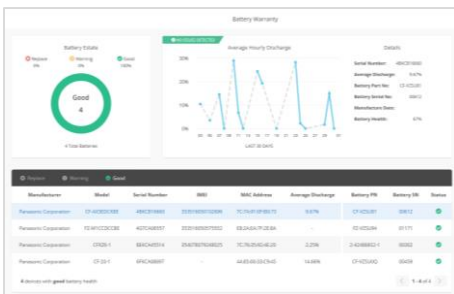


Real time analytics, powered by B2M Solutions, showing the health and performance of your estate of mobile devices, focussing on areas such as battery life, data usage, disruptions and connectivity. Enables the user to recognise patterns of usage and potentially pre-empt issues before they arise.

Part Nos.:

- **CF-LESPSSM3** 3 year Smart Service self-managed licence
- **CF-LESPSSM5** 5 year Smart Service self-managed licence

Smart Battery Monitor

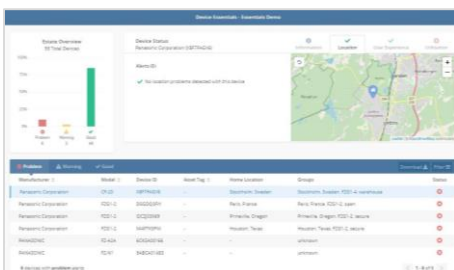


An additional “Smart” module that monitors battery usage and health in detail, focusing on battery serial numbers, the software allows the customer to track, identify and replace batteries before they impact productivity. With dashboard access and alerts.

Part Nos:

- **CF-LESPBAEE1** 1 year Smart Battery Monitor software licence
- **CF-LESPBAEE3** 3 year Smart Battery Monitor software licence
- **CF-LESPBAEE5** 5 year Smart Battery Monitor software licence

Smart Device Monitor



An additional “Smart” module that monitors device usage in more detail. Dashboard access provides information such as device location; user experience, including drop detection on Android devices and also enables alerts and geofences to be set up.

Part Nos:

- **CF-LESPDAEE1** 1 year Smart Device Monitor software licence
- **CF-LESPDAEE3** 3 year Smart Device Monitor software licence
- **CF-LESPDAEE5** 5 year Smart Device Monitor software licence



SOFTWARE SOLUTIONS – PREMIER PARTNERS



Absolute Data and Device Security

Patented technology to centrally secure TOUGHBOOK devices for unrivalled endpoint security and data risk management.

Part Nos:

- | | | |
|--------------------------|---------------------|----------------|
| • PCPE-ABSVIS* 1/2/3/4/6 | Absolute Visibility | 1/2/3/4/5 yrs. |
| • PCPE-ABSDPR* 1/2/3/4/6 | Absolute Control | 1/2/3/4/5 yrs. |
| • PCPE-ABSDPM* 1/2/3/4/6 | Absolute Resilience | 1/2/3/4/5 yrs. |

Website: <https://www.absolute.com/partners/oem/panasonic/>



NetMotion Mobility

More than just a VPN, "Mobility" Mobile Performance Management software can dynamically maintain access to applications through changing network conditions, allowing mobile workers to remain productive anywhere their work takes them. Diagnostics option also available.

Part Nos:

- PCPE-NLW 1/3/5*** Mobility and Diagnostics (plus 1, 3 or 5 years maintenance/support)
- PCPE-NMW 1/3/5*** Mobility only (plus 1, 3 or 5 years maintenance/support)

Website: <https://www.netmotionsoftware.com/products/mobility>



SOTI MobiControl

MobiControl is an Enterprise Mobility Management (EMM) solution with enhanced EMM features like application management, content management, location services and remote help.

Part Nos:

- PCPE-SOTCL** 1/2/3/5 U/E Cloud license & hosting (1, 2, 3 or 5 yrs. / UK or EU)

Website: <https://www.soti.net/products/soti-mobicontrol/>



Sygic

Sygic Professional GPS Navigation works offline and features truck specific routing, itinerary with time windows and over 60 APIs for development with Android and Windows based apps.

Part numbers available upon request.

Website: <https://www.sygic.com/enterprise/professional-gps-navigation-sdk>

For more info on these software solutions, please refer to the co-branded data sheet [here](#).

SOFTWARE SOLUTIONS – CERTIFIED PARTNERS



StayLinked

StayLinked's SmartTE software provides a cost-effective way to take advantage of touchscreen devices with Terminal Emulation by transforming traditional "green screen" application screens into easy-to-use, graphical screens with no changes to the underlying enterprise applications.

For more information or to request a demo, visit:
<https://www.staylinked.com/panasonic>



Loqus

Loqus Fleet Ltd specialises in the provision of end-to-end Transport management systems providing organisations with the necessary tools to help them Plan, Execute and Monitor & Control work orders from initial order taking down to the last mile. Headquartered in Malta, the group employs a passionate team of high calibre software engineers supported by an experienced management team

Visit website: <http://openfleet.loqusgroup.com/>



Acronis

Acronis sets the standard for cyber protection and hybrid cloud storage through its innovative backup, anti-ransomware, disaster recovery, storage, and enterprise file sync and share solutions. Enhanced by its award-winning AI-based active protection technology, blockchain-based authentication and unique hybrid-cloud architecture, Acronis protects all data in any environment – including physical, virtual, cloud, mobile workloads and applications – all at a low and predictable cost.

Visit website: <https://www.acronis.com>



GPC Systems

GPC is an award-winning software house with over 25 years of experience working with a range of sectors across the globe. Driven by the needs of their customers in healthcare, transportation, police, logistics and local government, GPC strives to improve outcomes through the most efficient use of resources. GPC has in-depth experience creating solutions utilising 3D cameras, including the Intel® RealSense™ technology integrated into the TOUGHBOOK M1.

Visit website: <https://www.gpcsl.com/>

All technical specifications are subject to change without notice.

ACCESSORY SUMMARY 1

Solution Type	Part Number	Description
Power Management	CF-VZSU0QW	Spare Battery Pack
	CF-VCB201*	4-bay Battery Charger
	CF-AA6413A	Replacement AC Power Supply (65W)
	CF-AA5713A*	Replacement AC Power Supply (110W)
	CF-LND80S-FD/BW	Car Charger (12-16VDC)
	CF-LND8024FD/BW	Car Charger (12-32VDC)
	PCPE-LNDAC01	AC/DC Combo Adaptor
	PCPE-LNDFH11	Car Charger for Forklifts (70-110V)
	PCPE-LNDFH32	Car Charger for Forklifts (12-32V)
	PCPE-LNDFH60	Car Charger for Forklifts (20-60VDC)
CF-LNDMLSTD	Mil Spec Vehicle Charger	
Connectivity	PCPE-CRD96B1/3/5	IBR900-600M router with cloud management bundle (1, 3 or 5 year)
	PCPE-CRD96F1/3/5	IBR900-600M router with cloud management bundle and vehicle antenna (1, 3 or 5 year)
	PCPE-CRD6001/2	IBR600C Wi-Fi router with NetCloud Essentials support (3 or 5 year)
	PCPE-CRD6003/4	IBR600C Wi-Fi router with NetCloud Essentials Prime support (3 or 5 year)
	PCPE-ZYWAN30	Wireless USB Adaptor
	PCPE-LAN CAB1	LAN Port Saver Cable
Security & Protection	PCPE-KENLOK1	Kensington Lock
	CF-VN001W	LCD Screen Cleaning Cloth
	CF-VPF31U	LCD Protective Film for TOUGHBOOK 20
	CF-VNP025U	Replacement TOUGHBOOK 20 Digitiser Pen
	PCPE-LDYST02	Capacitive Stylus Pen
	PCPE-INFUVA2	Stylus Tether
	PCPE-SMSD730	Rugged Bluetooth 1D Barcode Scanner
	PCPE-SMSD750	Rugged Bluetooth 1D & 2D Barcode Scanner
	PCPE-FCDVR06	External USB Blu-Ray Drive
	PCPE-FCDVR05	External USB CD/DVD-RW Drive
	PCPE-ACDSUK1/FR1/GR1	Rugged Mini Bluetooth Keyboard
Carrying Solutions	CF-VST2011U	Panasonic Rotating X-Hand Strap
	PCPE-INF20H1	TOUGHBOOK 20 Rotating Hand Strap
	PCPE-INF20A0	TOUGHBOOK 20 Always On Case
	PCPE-INF20B1	TOUGHBOOK 20 Tablet Mobility Bundle
	PCPE-INF20MF	TOUGHBOOK 20 Moduflex
	PCPE-SYS1548	TOUGHBOOK 20 Tablet Case (Non Docking)

All technical specifications are subject to change without notice.

ACCESSORY SUMMARY 2

Solution Type	Part Number	Description
Carrying Solutions	PCPE-INFUVA1	User Harness
	PCPE-SL20VH1	TOUGHBOOK 20 Vehicle Holster
	PCPE-INFBPK1	General Backpack
	PCPE-DCTBAG6	MultiCompact Case
	PCPE-WENSYN1	Synergy 15.4" Laptop Rucksack
	PCPE-DCTBAG7	Top Traveller PRO bag
	PCPE-CCI7652	Legacy 16" Double Laptop Case
Docking Solutions	CF-VEB201U	TOUGHBOOK 20 Desktop Port Replicator
	PCPE-GJ20V0 7/8/9	TOUGHBOOK 20 Notebook Vehicle Dock (GJ)
	PCPE-HAV2003/5/6	TOUGHBOOK 20 Notebook Vehicle Dock (Havis)
	PCPE-GJA2V* 01/02/03/04/05	TOUGHBOOK 20 Tablet Slim Vehicle Dock
	PCPE-GJA2V* 06/07/08/09/10	TOUGHBOOK 20 Tablet Expanded Vehicle Dock
Mobile Print & Scan Solutions	PCPE-BRP145B	MW-145BT A7 Portable Printer (with USB & Bluetooth)
	PCPE-BRPJ762	PJ762 A4 mobile printer, 200dpi with USB & Bluetooth
	PCPE-BRPJ763	PJ763 A4 mobile printer, 300 dpi with USB & Bluetooth
	PCPE-BRP2030	RJ2030 2" ticket/receipt printer (USB & Bluetooth)
	PCPE-BRP2050	RJ2050 2" ticket/receipt printer (USB, Bluetooth & WiFi)
	PCPE-BRP2140	RJ2140 2" ticket and label printer (USB & WiFi)
	PCPE-BRP2150	RJ2150 2" ticket and label printer (USB, Bluetooth & WiFi)
	PCPE-BRP3050	RJ3050 Mobile Receipt Printer (with USB, serial, Bluetooth & Wi-Fi)
	PCPE-BRP3150	RJ3150 Mobile Receipt & Label Printer (with USB, serial, Bluetooth & Wi-Fi)
	PCPE-BRPRJ30	RJ-4030 4" Mobile Printer (with USB, serial & Bluetooth)
	PCPE-BRPRJ40	RJ-4040 4" Mobile Printer (with USB, serial & Wi-Fi)

All technical specifications are subject to change without notice.

ACCESSORY SUMMARY 3

Solution Type	Part Number	Description
	PCPE-PSBIO5G	Custom BIOS Service – Gold
	PCPE-PSIMSP1	Image Support / Creation (per day)
	PCPE-PSIMSP2	On Site Image Support / Creation (per day)
	PCPE-PSSIMIN	SIM Installation
	PCPE-PSATAG1	Asset Tagging
	PCPE-PSATAGB	Information Management Bundle
	PCPE-PSAUTOP	Autopilot Enrolment
	PCPE-PSLOGOB	Custom logo badge
	PCPE-PSSPACK	Solution Packaging
	PCPE-PSCDL01	Customised Deployment / Logistics
	PCPE-PSBTM01	Bespoke Training Material
Lifecycle support solutions	CF-LESPEW 4/5	Extended Warranty
	CF-LESPAD 3/4/5	Accidental Damage
	CF-LESPHDEW 3/4/5	Hard Drive Warranty - 3, 4 or 5 years
	CDS-LESPAD* 3/4/5	Panasonic Dock – 3, 4 or 5 years Accidental Damage Warranty
	CDS-LESPTAD* 3/4/5	3rd Party Dock – 3, 4 or 5 years Accidental Damage Warranty
Smart Services	CF-LESPSSSM3/5	Smart Service self managed licence – 3 or 5 years
	CF-LESPBAEE1/3/5	Smart Battery Monitor software licence – 1, 3 or 5 years
	CF-LESPDAEE1/3/5	Smart Device Monitor software licence – 1, 3 or 5 years
Software Solutions	PCPE-ABSVIS* 1/2/3/4/6	Absolute Visibility
	PCPE-ABSDPR* 1/2/3/4/6	Absolute Control
	PCPE-ABSDPM* 1/2/3/4/6	Absolute Resilience
	PCPE-NMW 1/3/5***	NetMotion Mobility & Diagnostics software and support
	PCPE-NLW 1/3/5***	
	PCPE-SOTMC 1/2/3/5 U/E	Subscription & Maintenance (1, 2, 3 or 5 yrs; U: UK/E: EU)
	PCPE-SOTCL 1/2/3/5 U/E	Cloud License & hosting (1, 2, 3 or 5 yrs; U: UK/E: EU)

Panasonic and TOUGHBOOK are brand names and registered trademarks of Panasonic Corporation. Intel, the Intel logo, Intel Core, Intel vPro, Core Inside and vPro Inside are trademarks of Intel Corporation in the U.S. and other countries. Microsoft® and Windows® are registered trademarks of Microsoft® Corporation of the United States and/or other countries. All other brand names shown are the registered trademarks of the relevant companies. All rights reserved.

Mobile Solutions Business Division Europe, a division of Panasonic Marketing Europe GmbH Panasonic Marketing Europe GmbH is a company registered in Germany at Hagenauer Strasse 43, 65203 Wiesbaden, Germany. Registered in AG Wiesbaden HRB 13178