

**ZEBRA**

# **TC7X ACCESSORIES GUIDE**



# ZEBRA TC70/75 & 70x/75x Accessory Ecosystem



**A robust accessory family to tailor the TC70(x)/TC75(x) Series for any enterprise**

The Comprehensive family of accessories includes a snap-on magnetic stripe reader for mobile payment, a holster, a hand strap, a snap-on trigger handle and more, allowing you to easily tailor the TC70(x)/TC75(x) to meet the needs of many different types of users performing many different types of tasks. Multi-slot battery chargers and the unique ShareCradle – a multi-slot and 2-slot cradle system that can accommodate charge-only or data transfer needs for the TC70(x)/TC75(x) and future Zebra mobile computers– make backroom management easy and cost effective.

# ZEBRA Batteries / Battery Charging Accessories

## 4620 mAh Battery

### BTRY-TC7X-46MPP-01

TC7X PowerPrecision+ spare lithium ion Battery, 4620mAh (single) Advanced new battery technology, provides a higher level of intelligence (State of Charge and State of Health) to deliver maximum performance.



### BTRY-TC7X-46MPP-10

10-Pack



## Charging LED indicators

Off	Battery not charging
Solid Amber	Healthy battery charging
Solid Green	Healthy battery charging complete
Fast Blink Red	Charging error
Solid Red	Unhealthy battery charging or fully charged

## Spare Battery Charging Options

### SAC-TC7X-4BTYPP-01

Drop in style 4-Slot Battery Charger with LEDs to indicate Charge State. Can be docked and powered in the 5-Slot Cradle via adapter cup (Sold Separately) or used standalone.



When used stand-alone requires Power Supply: PWR-BGA12V50W0WW and a DC Line cord: CBL-DC-388A1-01 and country specific AC line cord (Cords and Power Supplies Sold Separately). Compatible with both PowerPrecision and PowerPrecision Plus Batteries

### Required Power Supply and DC Cable for Battery Charger:

Power supply for 4-slot battery charger: 100-240 VAC, 12VDC, 4.16A.

(PN: PWR-BGA12V50W0WW)

**Requires:** Country specific AC grounded line cord.



DC cable for Level 6 power supply PWR-BGA12V50W0WW (12 VDC, 4.16A), 1.8 M length. (PN: CBL-DC-388A1-01)

## US AC Line Cord



### 23844-00-00R

US AC line cord, 7.5 feet long, grounded, three wire for power supplies.

\*See slide 17 for your country Line cord needs

# ZEBRA Charging Options

## 2-Slot ShareCradle



### ShareCradle, Charge & Ethernet Communication

The 2-Slot ShareCradle is designed to provide the best desktop solution. Available in Charge-Only or USB/Ethernet variants, the 2-Slot ShareCradles accommodate 1x TC70(x)/TC75(x) Series and 1x spare battery.

*Note: 2-Slot ShareCradles require power supply: PWR-BGA12V50W0WW and requires a DC line cord: CBL-DC-388A1-01 and country specific AC line cord (Cords and Power Supplies Sold Separately)*

**CRD-TC7X-SE2CPP-01:** 2-Slot Charge Only ShareCradle for 1 terminal and one spare battery. Compatible with both PowerPrecision and PowerPrecision Plus batteries.

**CRD-TC7X-SE2EPP-01:** 2-Slot USB/Ethernet ShareCradle for 1 terminal and one spare battery. Compatible with both PowerPrecision and PowerPrecision Plus batteries.

## 2-slot Ethernet Module



### MOD-MT2-EU1-01

USB to Ethernet Module integrated into the bottom of the cradle providing a mechanical switch between USB and Ethernet

## Required for 2-Slot cradle



Power supply for 2-slot cradle: 100-240 VAC, 12VDC, 4.16A. (PN: PWR-BGA12V50W0WW)  
**Requires:** Country specific AC grounded line cord.



DC cable for power supply PWR-BGA12V50W0WW. (12 VDC, 4.16A) 1.8m length. (PN: CBL-DC-388A1-01)

## US AC Line Cord



### 23844-00-00R

US AC line cord, 7.5 feet long, grounded, three wire for power supplies.

\*See slide 17 for your country Line cord needs

# ZEBRA Charging Options

## Required for Multi-Slot ShareCradle

Power supply for multi-slot cradle: 100-240 VAC, 12VDC, 9A. (PN: PWR-BGA12V108W0WW)

**Requires:** Country specific AC grounded line cord (sold separately).



DC cable provides power from the power supply to multi-slot charge-only and Ethernet cradles.

(PN: CBL-DC-381A1-01)



## US AC Line Cord



**23844-00-00R**

US AC line cord, 7.5 feet long, grounded, three wire for power supplies.

\*See slide 17 for your country Line cord needs

### Notes:

1. 5-Slot Cradles require Power Supply: **PWR-BGA12V108W0WW**; and requires a DC line cord: **CBL-DC-381A1-01** and country specific AC line cord (*cords sold Separately*)
2. Optional 4-Slot Battery Charger, 4-Slot Battery Charger Adapter Cup and Mounting Accessory sold separately

## Multi-Slot ShareCradle



The 5-Slot ShareCradles provide high density & flexibility. Available in Charge-Only or Ethernet variants, the 5-Slot Share Cradles can accommodate either 5x or 4x TC70(x)/TC75(x) Series plus 4x spare batteries off of one power supply via the 4-Slot Battery Charger Adapter Cup (*Sold Separately*). The 5-Slot ShareCradles can be racked/mounted in a standard 19 in. rack system via the mounting accessory.

**CRD-TC7X-SE5C1-01:** TC7X 5-Slot Charge-Only Cradle for 5x TC7Xs or 4x TC7Xs 4x spare batteries off of one power supply via Adapter Cup sold separately. PWR-BGA12V108W0WW, country specific AC line cord and DC Line Cord CBL-DC-382A1-01 (Cords and Power Supplies Sold Separately)

**CRD-TC7X-SE5EU1-01:** TC7X 5-Slot Ethernet Cradle for 5x TC7Xs or 4x TC7Xs 4x spare batteries off of one power supply via Adapter Cup sold separately. PWR-BGA12V108W0WW, country specific AC line cord and DC Line Cord CBL-DC-382A1-01 (Cords and Power Supplies Sold Separately)

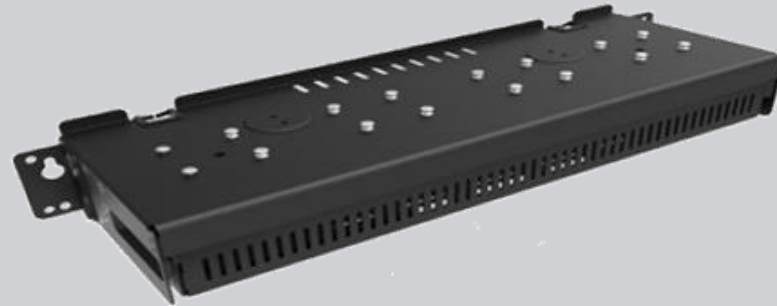


## Mount Options for Multi-Slot Cradles

### MAXIMUM DENSITY

#### RACK MOUNTED SOLUTION:

The Rack/Wall Mount Bracket has been optimized to work on a standard 19-inch IT rack. The brackets can also be configured in different angles for maximum flexibility.



### Rack/Wall Bracket for Multi-Slot ShareCradle



#### BRKT-SCRD-SMRK-01

Rack/Wall mounting bracket is designed to help customers install any Single-Slot or Multi-Slot ShareCradle on a wall or a 19" IT rack. The bracket also enables the installation of up to four 4-Slot Spare Battery Chargers together on a wall or standard 19" IT rack.

### 4-slot Battery Charging Solution

#### CUP-SE-BTYADP1-01

ShareCradle 4-Slot battery charger adapter cup. Allows for a 4-Slot Battery Charger to be charged and docked on the 5-Slot ShareCradles

#### CRD-TC7X-SE5C1-01

TC7X 5-Slot Charge-Only Cradle for 5x TC7Xs or 4x TC7Xs 4x spare batteries off of one power supply via Adapter Cup sold separately. PWR-BGA12V108W0WW, country specific AC line cord and DC Line Cord CBL-DC-382A1-01 (Cords and Power Supplies Sold Separately)



# ZEBRA Trigger Handle

## TC7X Attachable Trigger

### TRG-TC7X-SNP1-02

TC70(x)/TC75(x) Snap-On Trigger Handle. Easily attaches to bottom housing and easily removed to access the battery. The trigger handle includes a wrist tether that is attached to the trigger and the bottom housing of the device



New

New

ShareCradle Compatibility Varies Based on Trigger Cleat	
For Use With Charge-Only ShareCradle	<b>ADP-TC7X-CLHTH-10</b> - pack of 10 pairs of cleats + straps – compatible to leave in with trigger gun
For Use With Ethernet ShareCradle	<b>ADP-TC7X-CLPTH1-20</b> - pack of 20 cleats – compatible to leave in (but trigger gun needs to be removed)

## Trigger Handle Service Plan

The TC7X trigger accessory provides users with significant flexibility as they adapt the TC7X device to different operations within their retail environment. The TC7X trigger accessory is considered a consumable item which may need to be replaced during the life of a TC7X. Therefore, Zebra highly recommends the purchase of a Zebra trigger handle service plan.

\*For dedicated high-intensity scanning operations, customers are urged to consider Zebra mobile devices with integrated gun handles such as the MC33 and TC8000.

OPT-TRGMNT-3	3-Year Zebra OneCare Comprehensive Trigger Maintenance
OPT-TRGMNT-5	5-Year Zebra OneCare Comprehensive Trigger Maintenance

## Hand Strap

### SG-TC7X-HSTR2-03

3-pack of hand straps. Made of leather and Hypalon, this adjustable hand strap provides comfort to support a wide range of hand sizes while resisting wear in rugged environments. The hand strap also provides a loop tether point for the optional stylus. Plastic clip latches into terminal for easy insertion and removal.



## Soft Holster

### SG-TC7X-HLSTR1-02

Soft holster for vertical orientation with open bucket design to accommodate hand strap and snap-ons, such as the MSR for easy insertion and removal. Includes loop for optional stylus.



## Stylus & Screen Protector



### SG-TC7X-STYLUS-03

Stylus with coiled tether 3-pack. Made of conductive carbon-filled plastic material, optimized for enterprise durability.

### SG-TC7X-SCRNTMP-01

This optional screen protector safeguards the display, eliminates sunlight glare and maintains clarity of your mobile computer. Part contains 1 each, and compatible with the TC70x/TC75x (Android) Only.



## Rigid Holster

### SG-TC7X-RHLSTR1-01

Rigid Holster with snap-in design. Rotating Belt Clip with ability to insert in either direction. Compatible with Snap-on Accessories excluding the Trigger Handle.





## Rugged Headset

### HS2100-OTH

HS2100 Rugged Wired Headset Over-The-Head Headband includes HS2100 Boom Module and HSX100 OTH Headband Module



## Headset

### HDST-35MM-PTVP-01

Over the ear headset with mic and PTT button. Requires 3.5MM adapter cable CBL-TC51-HDST35-01 (sold separately).



## Audio Jack Adapter

### ADP-TC7X-AUD35-01

2.5MM Female to 3.5MM Male Headset Adapter Cable.



## Bluetooth Headset

### HS3100-OTH

HS3100 Rugged Bluetooth Headset Over-The-Head Headband includes HS3100 Boom Module and HSX100 OTH Headband Module



## Rugged Charge Cable

### CHG-TC7X-CBL1-01

TC7X Charging Cable Cup. Requires PWR-BUA5V16W0WW, DC Cable CBL-DC-383A1-01 and Country specific AC Line Cord sold separately



## MSR Adapter

### MSR-TC7X-SNP1-01

Provides charging and communications. Snaps on to bottom of TC7X device. Can be used with any consumer grade USB-C cable. Plugs into any standard wall adapter or USB port. USB-C cable sold separately



## USB Charge Cable

### CBL-TC7X-USB1-01

Snap-On USB/Charge Cable. For charging, PWR-BUA5V16W0WW, DC cable CBL-DC-383A1-01 and Country Specific sold separately



## Headset Adapter

### ADP-35M-QDCBL1-01

3.5MM Quick-Disconnect Headset Adapter Cable. Connects headsets with Quick-Disconnect connector to devices with a standard 3-pole 3.5mm barrel jack connector.



## DX30

**3PTY-BTEK-DX30**

DX30 Key Fob/ 620mAh Battery (Charging accessories and SmartDex License sold separately)



## DX30 Charge Cable

**3PTY-BTEK-DX30CHG**

DX30 Charge Cable



## DX30 Charger

**3PTY-BTEK-DX304SC**

DX30 4-Slot Charger



## DEX Cable

**CBL-TC7X-DEX1-01**

Snap-on Cable for DEX Communication



## Vehicle Cradle

### CRD-TC7X-VCD1-01

TC7X Vehicle Data Communication and Charge Cradle Kit with USB I/O Hub. For power it requires CHG-AUTO-CLA1-01 or hard wired CHG-AUTO-HWIRE1-01, both sold separately.



## Vehicle Cradle

### CRD-TC7X-CVCD1-01

TC7X Charge Only Vehicle Cradle. Compatible with snap on accessories (excluding Trigger handle). Optional CLA or Hardwire Charging, Windshield or Hard installation via Ram mounts sold separately.



## Auto Charge Cable

### CHG-TC7X-CLA1-01

TC7X Auto Charging Cable Cup. Snaps onto the bottom of TC75, allowing the users to charge their TC75 via a Vehicles Cigarette Light Adapter CLA.



## Hardwire Auto Charge Cable

### CHG-AUTO-HWIRE1-01

Hardwire Auto Charge Cable for the vehicle cradle. Allows for installation into Vehicles fuse box. Does not work without Cradle (Sold Separately)



## Cigarette Light Adapter

### CHG-AUTO-CLA1-01

Auto Charger for TC7X Vehicle Cradle sold separately. Cigarette light adapter to Barrel Jack.





## Ram Suction Cup Mount

### RAM-B-166U

RAM Twist Lock Suction Cup with Double Socket Arm and Diamond Base Adapter; Overall Length: 6.75". Compatible with both charge and communications vehicle cradles.



## RAM Mount Ball Base

### RAM-B-238U

RAM 2.43" x 1.31" Diamond  
Ball Base w/ 1" Ball



## ProClip Swivel Mount

### 3PTY-PCLIP-215500

Tilt swivel mount for TC70/TC75 vehicle  
cradle



## ProClip Pedestal Mount Kit

**3PTY-PCLIP-710834**

4" Pedestal mounting kit for TC70(x)/TC75(x) vehicle cradle.



## ProClip Pedestal Mount Kit

**3PTY-PCLIP-710835**

4" Pedestal mounting kit for TC70(x)/TC75(x) vehicle cradle (90 degree 2 inch center rod).



## ProClip Pedestal Mount Kit

**3PTY-PCLIP-710836**

2" Pedestal mounting kit for TC70(x)/TC75(x) vehicle cradle.



## ProClip Forklift Cradle



**3PTY-PCLIP-710832**

TC70(x)/TC75(x) Forklift cradle with 8" forklift grill mounting hardware

## ProClip Forklift Cradle



**3PTY-PCLIP-710833**

TC70(x)/TC75(x) Forklift cradle with 2" forklift grill mounting hardware

## ProClip Forklift Mount

**3PTY-PCLIP-215772**

Forklift mount (clamps to post or grill on forklift)





# ZEBRA Country Specific AC Line Cord Options

Country	Grounded AC Line Cord
Abu Dhabi	50-16000-220R: AC line cord, 1.8 m, grounded, three wire, CEE 7/7 plug.
Australia	50-16000-217R: AC line cord, 1.9 m, grounded, three wire, AS 3112 plug.
Bolivia	50-16000-220R: AC line cord, 1.8 m, grounded, three wire, CEE 7/7 plug.
China	50-16000-217R: AC line cord, 1.9 m, grounded, three wire, AS 3112 plug. 50-16000-257R: AC line cord, 1.8 m, grounded, three wire, IEC 60320 C13 plug.
Dubai	50-16000-220R: AC line cord, 1.8 m, grounded, three wire, CEE 7/7 plug.
Egypt	50-16000-220R: AC line cord, 1.8 m, grounded, three wire, CEE 7/7 plug.
Europe	50-16000-220R: AC line cord, 1.8 m, grounded, three wire, CEE 7/7 plug.
Hong Kong	50-16000-219R: AC line cord, 1.8 m, grounded, three wire, BS1363 plug.
India	50-16000-669R: AC line cord, 1.9 m, grounded, three wire, BS 546 plug.
Iran	50-16000-220R: AC line cord, 1.8 m, grounded, three wire, CEE 7/7 plug.
Iraq	50-16000-219R: AC line cord, 1.8 m, grounded, three wire, BS1363 plug.
Israel	50-16000-672R: AC line cord, 1.9 m, grounded, three wire, S132 plug.
Italy	50-16000-671R: AC line cord, 1.8 m, grounded, three wire, CIE 23-16 plug.
Japan	50-16000-218R: AC line cord, 1.8 m, grounded, three wire, NEMA 1-15P plug.
Korea	50-16000-220R: AC line cord, 1.8 m, grounded, three wire, CEE 7/7 plug.
Malaysia	50-16000-219R: AC line cord, 1.8 m, grounded, three wire, BS1363 plug.
Russia	50-16000-220R: AC line cord, 1.8 m, grounded, three wire, CEE 7/7 plug.
Singapore	50-16000-219R: AC line cord, 1.8 m, grounded, three wire, BS1363 plug.
New Guinea	50-16000-217R: AC line cord, 1.9 m, grounded, three wire, AS 3112 plug.
United Kingdom	50-16000-219R: AC line cord, 1.8 m, grounded, three wire, BS1363 plug.
United States	23844-00-00R: US AC line cord, 7.5 ft. long, grounded, three wire.
	50-16000-221R: AC line cord, 1.8 m, grounded, three wire, USA NEMA 5-15P.
	50-16000-678R: AC line cord, 36in. long, grounded, three wire.
Vietnam	50-16000-220R: AC line cord, 1.8 m, grounded, three wire, CEE 7/7 plug.

Country	Ungrounded AC Line Cord
Argentina	50-16000-255R: AC line cord, 1.8 m, ungrounded, two wire, CEE7/16.
Australia	50-16000-666R: AC line cord, 1.8 m, ungrounded, two wire, AS 3112 plug.
Belgium	50-16000-255R: AC line cord, 1.8 m, ungrounded, two wire, CEE7/16.
Bermuda	50-16000-670R: AC line cord, 1.8 m, ungrounded, two wire, BS 1363 plug.
Chile	50-16000-255R: AC line cord, 1.8 m, ungrounded, two wire, CEE7/16.
China	50-16000-664R: AC line cord, 1.8 m, ungrounded, two wire, GB 2099-1-1996 plug.
France	50-16000-255R: AC line cord, 1.8 m, ungrounded, two wire, CEE7/16.
Germany	50-16000-255R: AC line cord, 1.8 m, ungrounded, two wire, CEE7/16.
Hong Kong	50-16000-670R: AC line cord, 1.8 m, ungrounded, two wire, BS 1363 plug.
India	50-16000-668R: AC line cord, 1.8 m, ungrounded, BS 546 plug.
Iraq	50-16000-670R: AC line cord, 1.8 m, ungrounded, two wire, BS 1363 plug.
Italy	50-16000-255R: AC line cord, 1.8 m, ungrounded, two wire, CEE7/16.
Malaysia	50-16000-670R: AC line cord, 1.8 m, ungrounded, two wire, BS 1363 plug.
Netherlands	50-16000-255R: AC line cord, 1.8 m, ungrounded, two wire, CEE7/16.
New Zeland	50-16000-666R: AC line cord, 1.8 m, ungrounded, two wire, AS 3112 plug.
Singapore	50-16000-670R: AC line cord, 1.8 m, ungrounded, two wire, BS 1363 plug.
South Korea	50-16000-255R: AC line cord, 1.8 m, ungrounded, two wire, CEE7/16.
Spain	50-16000-255R: AC line cord, 1.8 m, ungrounded, two wire, CEE7/16.
Sweeden	50-16000-255R: AC line cord, 1.8 m, ungrounded, two wire, CEE7/16.
United Kingdom	50-16000-670R: AC line cord, 1.8 m, ungrounded, two wire, BS 1363 plug.
United States	50-16000-182R: US AC line cord, ungrounded, two wire.
Vietnam	50-16000-255R: AC line cord, 1.8 m, ungrounded, two wire, CEE7/16.