

Rittal – The System.

Faster – better – everywhere.

PDU basic – DK 7979.114

Date : Jul 2, 2021

ENCLOSURES

POWER DISTRIBUTION

CLIMATE CONTROL

IT INFRASTRUCTURE

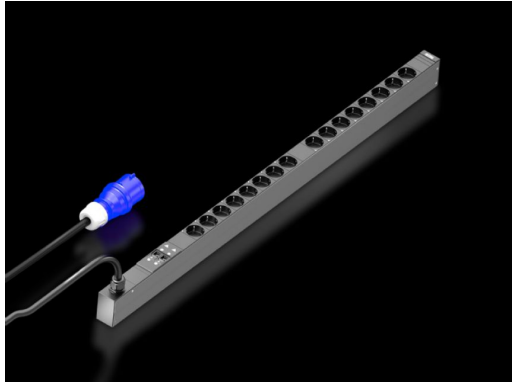
SOFTWARE & SERVICES

FRIEDHELM LOH GROUP



PDU basic – DK 7979.114

created: 02.07.2021 on www.rittal.com/com-en



Product description

Description:	Compact basic power distribution. Thanks to the PDU basic, any IT rack can easily be equipped with a professional power distribution system. Depending on the PDU design, horizontal mounting in the 482.6 mm (19") level or vertical mounting (including in the zero-U space) is possible.
Benefits:	For vertical mounting, it may be attached in the zero-U space of the Rittal VX IT or TS IT rack with no need for tools Colour coding of phases and fuse circuits (L1=pink, L2=black, L3=white) Tool-free divider kit for VX IT
Material:	Extruded aluminium section, anodised Slots: Plastic
Protection category IP to IEC 60 529:	IP 20
Standards:	EN 62368-1 EN 61000-3 EN 61000-4 EN 61000-6 EN 62053-21
Directives:	EMC Directive 2014/30/EU Low Voltage Directive 2014/35/EU
Supply includes:	Connector lock for IEC C14 and C20 connectors Assembly parts
Options:	Type 3 overvoltage protection with interchangeable arresters while operational, with status monitoring, suitable for integration into PDU enclosure Other enclosure colours are available

Product description

Variant:	passive
Sockets:	16 x earthing-pin
To fit:	Enclosure type: Enclosure frame Enclosure type: 482.6 mm (19") mounting angles Height: ≥ 1200 mm Height: ≥ 1800 mm
Dimensions:	Width: 44 mm Depth: 70 mm Length: 1095 mm
Rated operating voltage:	230 V (AC)
Infeeds:	Qty.: 1 Phases per infeed: 1~
Length of connection cable:	3 m
Ambient conditions:	Operating temperature: +5 °C...+50 °C Storage temperature: -20 °C...+70 °C Ambient humidity (non-condensing): 10 % - 95 %
Circuit-breaker 16 A (qty.):	2
Type of electrical connection:	CEE
Rated current (max.):	32 A
Output:	7.4 kW
Packs of:	1 pc(s).
Weight/pack:	4.68 kg
Copper weight (kg per piece):	0
EAN:	4028177947436
Customs tariff number:	85366990
ETIM 7.0:	EC000330
ETIM 6.0:	EC000330
eCl@ss 8.0/8.1:	27142604

eCl@ss 6.0/6.1:	27142604
Product description:	PDU basic 32A/1P CEE 16xCEE7/3 earthing-pin, DK PDU basic, Compact basic power distributor, WHD: 44x1095x70, CEE 7/3: 16 x earthing-pin
Approvals	
Certificates:	EAC
Declarations:	Declaration of conformity