



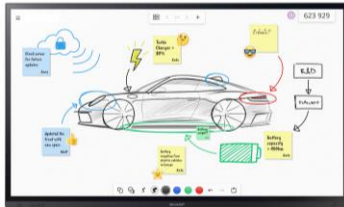
Sharp Collaboration Displays

Make meetings come alive

Sharp Collaboration Displays

It's as easy as ABC !

A
is for
Advanced



Sharp LA Series
65", 75", 86"

Positioning
Target Market
Platform

High-end
Enterprise
Non-Android

B
is for
Business



Sharp LB Series
65", 75", 86"

Positioning
Target Market
Platform

Mainstream
SMB
Android SoC – option to hide

C
is for
Classroom



Sharp LC Series
65", 75", 86"

Positioning
Target Market
Platform

Entry
Higher Education
Android SoC

Benefits of Sharp Collaboration Displays

- Intuitive “**Pen-on-Paper**” user experience along with zero-bonded glass, gives a particularly smooth, engaging and natural writing performance.
- **Unhindered readability** during classroom or meeting room presentations without distracting reflections or glare from windows or other light sources.
- **Rich connectivity** featuring multiple industry standard signal inputs for flexible integration into AV infrastructures including the latest USB-C input.
- A **modular & futureproof approach** to enhance the computing power of your display, choose from different slot-in PC options (Intel® OPS, Intel® SDM).
- **Secure remote management** controls your Sharp Collaboration Displays remotely using NEC NaviSet Administrator 2; proactively manage maintenance requirements saving time and resources.

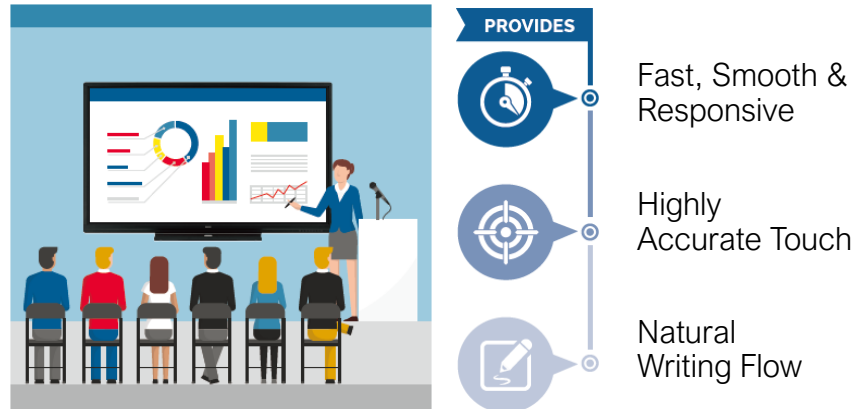
“Pen-on-Paper” writing

Trusted writing experience on all Sharp Collaboration Displays.



Pen-on-Paper

- There's a reason why we've named it the **Pen-on-Paper** experience.
- Whether using the Sharp pens or your finger - is just as **natural and accurate** as if drawing with an ink pen on a paper.
- “Pen-on-paper” is a **registered trademark** of Sharp Corporation.



Versatile installation

Sharp Collaboration Displays support orientation any which way. Every installation has different demands and requirements for integration, so flexibility is key!

Portrait installation with
LB (65"/75") & LA Series

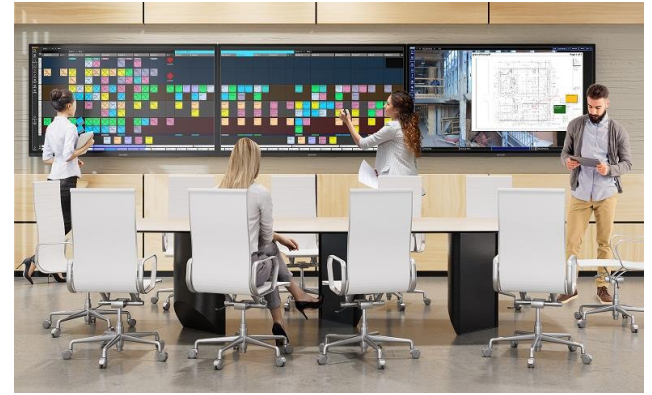


Tilted desk & face up,
allowing table-top with LA Series



Face-up installation requires special
face-up bracket for LA752 & LA862

Multi-board side-by-side for up to
three displays with LA Series



Sharp's **Multi-board Driver** enables
simultaneous writing on up to three screens

Zero-Bonding

for more accurate touch response

InGlass™ M5

for exceptional writing experience

Most natural writing

supporting Windows Ink, palm rejection & pressure sensitivity

Premium coating

resists fingerprints, scratches & glare in perfect balance

Sharp Meeting Launcher*

provides quick & easy access to Windows apps

AirServer*

wireless screen sharing without apps or dongles

FlatFrog Board for Rooms**

highly collaborative cloud-based whiteboarding platform

Built-in ECO sensors

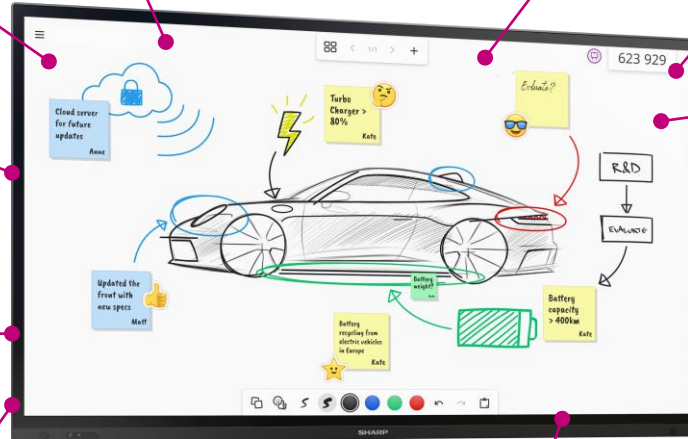
motion and brightness sensors help reduces power consumption

Secure by design

meeting highest IT security standards

USB-C

BYOM with up to 65W charging



Best-in-class image quality

superior brightness output & high haze panel

Intel® SDM slot

for enhanced computing power

*Optional with SDM-L Slot-in PC Collaboration

** One-year free license included

Benefits of Sharp LA Series

- Most natural writing experience – **InGlass™ M5 premium touch** system supports patented pressure sensitivity as well as **Windows Ink** and **palm rejection**.
- Best readability – **500cd/m² brightness** output with **high haze panel** and **premium glass coating** ensures content is easily readable even in brightly lit spaces.
- ‘Secure by design’ – the **non-Android platform** with enhanced security features meets **highest IT security** standards.
- Optional Windows based **Intel® SDM Slot-in PC** – driving unlimited versatility with powerful integrated computing. SDM-L Collaboration includes **Sharp’s Meeting Launcher** for quick and easy access to your apps.
- **Energy efficiency** – built-in functionality including an ambient light sensor, motion detection and eco modes help to reduce power consumption.



Intuitive UI

even for non regular users

PrecisionTouch

natural writing including WindowsInk

Zero-Bonding

for more accurate touch response

Overlay mode

annotate over any content

Pre-installed apps

Whiteboard, wireless screen sharing and browser

BytelloShare*

wireless screen sharing without apps or dongles

App side-loading

install your own apps

Graded Android Security

adjust the security level to your needs

Front facing speakers

for clear and directed sound

Extra brackets

VESA bracket for mini-PC and bracket to mount camera/soundbar



USB-C

BYOM with up to 65W charging

Intel® OPS slot

for enhanced computing power

*Also supporting native AirPlay, Chromecast and Miracast

Benefits of Sharp LB Series

- Highly responsive touch experiences - Sharp PrecisionTouch technology with **Windows Ink** support provides **accurate and natural touch** interaction.
- Out-of-the-box collaboration – the integrated **Android SoC** features a **powerful home screen launcher** offering fast and flexible access to a range of **pre-installed apps**.
- Latest BYOD wireless collaboration – **wirelessly share content from any device** using the BytelloShare app.
- No need to bring your own notebook – the trusted **Google CTS certified** platform allows you to **install your own applications** to the built-in Android SoC.
- **Graded Android security** – graded data security allows to you to adjust the Android SoC security level, with the **option to hide**.



Intuitive UI

including customizable compass to set your preferred shortcuts

Zero-Bonding

for more accurate touch response

Overlay mode

annotate over any content

User comfort

blue-light filter, eye-care mode & Universal Color Design

Pre-installed apps

Whiteboard, wireless screen sharing and browser

USB-C

BYOM with up to 65W charging

EShare*

mirror from your device to the display and back from the display to multiple devices

Intel® OPS slot

for enhanced computing power

Educational tool

to support your presentations and lessons

Front facing speakers

for clear and directed sound

Buttons & ports at the front

for easy access

HDMI-out

to present content to a larger canvas

Extra brackets

bracket to mount camera/soundbar on top of display



*Also supporting native AirPlay, Chromecast and Miracast

Benefits of Sharp LC Series

- **Out-of-the-box ready experience** – with interactive functionality pre-installed, no external devices are needed for an all-in-one solution.
- Boost participation with wireless sharing - **share content between devices and to the display simultaneously** with the eShare feature.
- Instantly access the tools you need – **powerful educational tools** are always available no matter which input is used.
- **Ease of use** - buttons and ports are located at the front of the display for fast and easy access.
- **Project to a bigger audience** - connect to an additional output device such as a projector via **HDMI-OUT**, ideal for lecture halls



A Sharp LA Series
 High-end Enterprise
 Non-Android
 Is for Advanced

B Sharp LB Series
 Midrange SMB
 Android SoC - option to hide
 Is for Business

C Sharp LC Series
 Entry Higher Education
 Android SoC
 Is for Classroom

LA Series
 65", 75", 86"

LB Series
 65", 75", 86"

LC Series
 65", 75", 86"

	LA Series	LB Series	LC Series
Touch Technology	InGlass™ M5	PrecisionTouch	Infrared
Windows Ink	✓	✓	X
Palm Rejection	✓	X	X
Pressure Sensitivity	✓	X	X
Operating Hours	24/7	16/7	16/7
Slot-in Option	Intel SDM	Intel OPS	Intel OPS
Embedded Android SoC	X	✓	✓
Hide Android SoC	N/A	✓	X
App Side Loading (Android SoC)	N/A	✓	X
Launcher Application	+	✓	✓
Embedded Whiteboard	+	✓	✓
Embedded Wireless Screen Sharing	+	✓	✓
Pre-installed Educational Tools	X	X	✓
Video Output	✓	X	✓
Face-up Support	✓	X	X
Multi-Board Support	✓	X	X

✓	Standard
X	Not available
+	Optional

Slot-in computing

Simplifying device installation, usage, maintenance and upgrade

Intel® OPS Slot-in PC for LB & LC Series

- OPS Slot-in PC **Enterprise Pro**: Intel® Core™ i5, 8GB RAM, 128GB SSD, WiFi, Windows11 Pro
- OPS Slot-in PC **Enterprise Ultra**: Intel® Core™ i7, 16GB RAM, 256GB SSD, WiFi, Windows11 Pro



Intel® SDM Slot-in PC for LA Series

- SDM-L Slot-in PC **Enterprise**: Intel® Core™ i5, 16GB RAM, 256GB SSD, WiFi, TPM, Windows11 Pro
- SDM Slot-in PC **Collaboration**: Intel® Core™ i5, 16GB RAM, 256GB SSD, WiFi, TPM, Windows11 Pro & preinstalled applications:
 - Sharp Meeting Launcher
 - FlatFrog Board for Room whiteboard (1-year license)
 - AirServer for wireless screen sharing



Options for meeting rooms

Supporting today's hybrid meeting room requirements

Universal all-in-one soundbar

Sharp's AV Soundbar **PN-ZCMS1** enabling quick and easy-to-use unified communication, enhancing almost any office, meeting room and classroom. Easy installation on top of your Sharp Collaboration Display using the supplied camera bracket.



USB-C Cable to support BYOM

One single USB-C cable connects your notebook with your Sharp Collaboration Display to share content or start a video meeting.

- **USB-C 5M:** 5 meter USB-C hybrid optical cable, DP1.4 DP Alt Mode 4 lanes USB2.0
- **USB-C 7M:** 7 meter USB-C active optical cable, DP1.4 DP Alt Mode 4 lanes USB2.0



Mounting options

Choose from wall-mounted or mobile trolley-mounted options to suit your usage scenario

Wall Mounts



L20PNWALL90EU

Universal X-Large flat wall mount for 65" LC & LB Series and LA Series.



SF680P

Universal XX-Large flat wall mount for 75", 86" LC & LB Series.

Mobile Stands



L20PNSR780MEU

Mobile stand for 65" and 75" LC & LB Series and LA Series.



PD02MHA

Entry automatic height-adjustable trolley. (Note: Use PD02MHA-CB86 for 86" LC & LB series).



PD03MHA

High-end automatic height-adjustable trolley. (Note: Use PD03MHA-CB86 for 86" LC & LB series)



Sharp Meeting Launcher

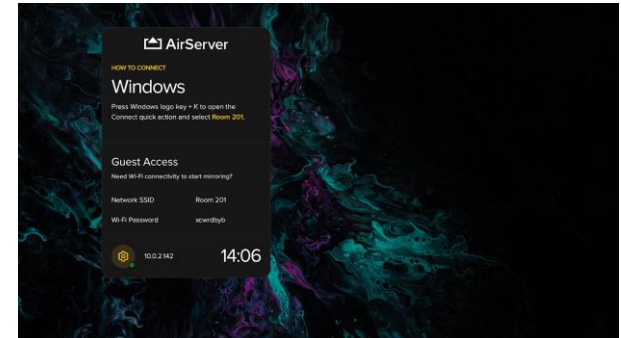
Sharp Meeting Launcher provides quick and easy access to your favorite Windows apps while offering a secure and locked environment.

- Full screen locked kiosk mode
- Dedicated PC security settings
- Room reset features

AirServer™

Start presenting on time with native wireless screen mirroring. AirServer supports AirPlay, Google Cast, Miracast and guest access along with many innovative features.

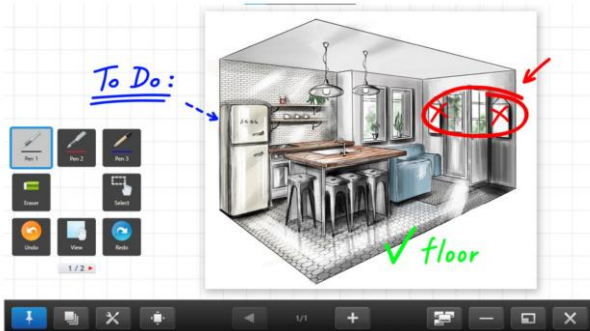
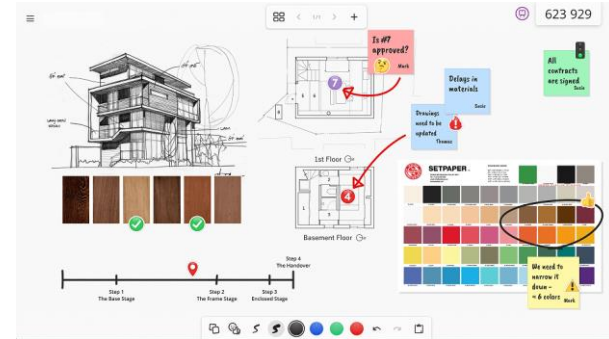
- No apps or dongles required
- Display your own content between sessions
- Cast your favorite media and other Chromecast enabled apps



FlatFrog™ Board for Rooms

FlatFrog Board for Rooms is a collaborative whiteboard solution that turns ordinary meetings into productive sessions in the office.

- Designed to be as intuitive as your dry-erase whiteboard
- Add sticky notes and choose from different templates
- Collaborate from any device



Sharp Pen Software

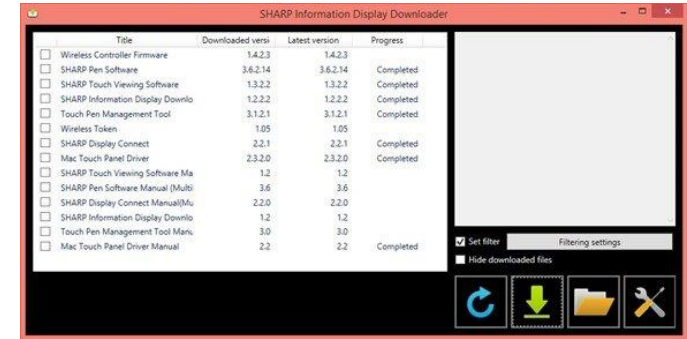
Sharp Pen Software allows several people to write on the same display at the same time.

- Floating tool bar offering smartly arranged icons with easy access to pen settings and functions
- Overlay mode allows the user to write on-screen and annotate directly onto photos, videos, PDFs and Microsoft® files
- Turns your handwritten notes into digital script

Sharp Information Display Downloader

Stay up to date with the latest applications and firmware available for your Sharp displays.

- Receive automatic update information for your Sharp displays
- Know precisely which applications are available for your Sharp displays (e.g., Sharp Pen software)
- Easy download from Sharp server of latest software and firmware



NaviSet Administrator 2.0

All-in-one remote support for desktop monitors, large format displays, interactive displays, and projectors.

- Reduces administration efforts and costs
- Easier management of large visual estates
- Enables detailed analysis of device usage

Service PLUS – a commitment to quality

Sharp/NEC has built a world-renowned reputation developing Visual Solutions that offer the ultimate in quality, performance and longevity.

The Service Plus offering

A unique service with an unrivalled service partner network and support infrastructure. Guaranteed performance for the entire lifecycle of our products.

- Flexible Warranty Extension Programs for all product categories
- 24/7 for selected displays and projectors
- De-Re-install service for displays and projectors
- Optional additional services for dedicated Sharp/NEC displays and projectors with Support+



SHARP / NEC

Sharp NEC Display Solutions Europe GmbH