

# PHILIPS

WUXGA LCD  
monitor

Business Monitor

3000 series

24 (24.1"/61.13 cm diag.)

1920 x 1200 (WUXGA)

24B2N3200D



## Redefining workflow productivity

This Philips WUXGA (1920 x 1200) 16:10 monitor is equipped with an IPS panel for wide viewing angles. The 100 Hz refresh rate ensures smooth performance. It features SoftBlue technologies to reduce eye strain and support all-day productivity.

### Designed for the way you work

- Built-in stereo speakers for multimedia
- Smart Link Sync: Matches primary display on second screen
- SmartErgoBase enables user-friendly ergonomic adjustments
- Ultra Slim Bezel: for minimal edges and more screen
- SoftBlue Technology: for comfortable viewing
- Less eye fatigue with Flicker-Free technology

### Easy to experience

- VESA mount for convenience
- HDMI ensures universal digital connectivity

### Superb Picture Quality

- 100 Hz refresh rates for ultra-smooth images
- 16:10 WUXGA display for more productivity
- IPS LED wide view technology for image and colour accuracy

# Highlights

## IPS technology



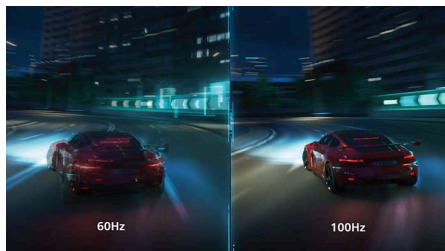
IPS displays use an advanced technology that gives you extra-wide viewing angles of 178/178 degrees, making it possible to view the display from almost any angle. Unlike standard TN panels, IPS displays give you remarkably crisp images with vivid colours, making them ideal not only for Photos, movies and web browsing, but also for professional applications that demand colour accuracy and consistent brightness at all times.

## 16:10 WUXGA display



Experience the power of WUXGA resolution (1920 x 1200), offering a taller 16:10 aspect ratio compared to standard Full HD. That extra vertical space means less scrolling and more room to view documents, spreadsheets and web pages at once. Enjoy a more comfortable, efficient workflow designed to boost productivity and keep you focused throughout the day.

## 100 Hz fast refresh



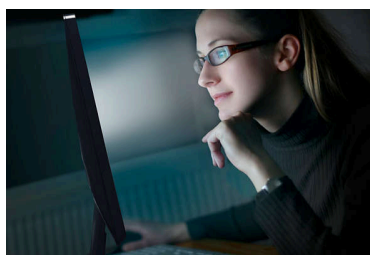
This Philips display refreshes the screen image up to 100 times per second which makes this monitor much faster than a standard display. With a 100 Hz frame rate, gamers are able to find those critical images on the screen that show enemy movement in an ultra-smooth motion so that they are easily targetable.

## Ultra-Slim Bezel



This monitor makes your viewing experience feel more seamless and complete by reducing the amount of frame surrounding the screen. The Ultra-Slim Bezel feature makes for an elegant transition from the screen to the narrow monitor bezel, thereby making it more beautiful in form and function.

## SoftBlue Technology



SoftBlue LED technology, combined with the monitor's low blue light panel, is an effective solution to reduce the adverse health effects

caused by high exposure to blue light. In this monitor's panel, the ratio of light is reduced by nearly 50%, while the SoftBlue LED technology works simultaneously by reducing harmful blue light rays emitted from the screen. Not to mention, the SoftBlue LED technology is tested and certified by TÜV Rheinland Eyesafe for its effectiveness in reducing blue light emissions.

## Flicker-Free technology



Due to the way brightness is controlled on LED-backlit screens, some users experience flicker on their screen which causes eye fatigue. Philips Flicker-Free technology applies a new solution to regulate brightness and reduce flicker for more comfortable viewing.

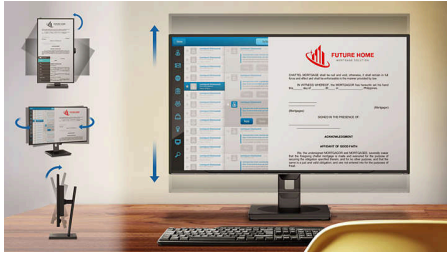
## Smart Link Sync Second Screen Harmony



When connected as a secondary monitor in a daisy-chain setup with a Smart Link Sync enabled primary display, brightness and colour settings are automatically synchronised. There is no manual adjustments needed. Whether you're designing, presenting or multitasking, enjoy seamless visual consistency across screens. Choose from OSD Sync or Light Sync modes (Low, Mid or High) in the primary monitor to match your environment.

## Highlights

### SmartErgoBase



The SmartErgoBase is a monitor base that delivers ergonomic display comfort and provides cable management. The base can swivel, tilt and rotate to various angles to ensure maximum comfort. The height-adjustable stand guarantees the optimal viewing level, reducing the physical strains of a long workday, while cable management reduces cable clutter and keeps the workspace neat and professional.

### Built-in stereo speakers



A pair of high-quality stereo speakers built into a display device. They may be visible front firing, or invisible down firing, top firing, rear firing etc. depending on model and design.

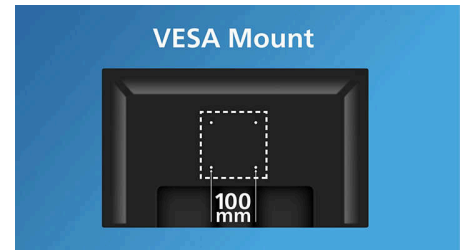
### HDMI Ready



An HDMI-ready device has all the required hardware to accept High-Definition Multimedia Interface (HDMI) input. An HDMI cable enables

high-quality digital video and audio to be transmitted over a single cable from a PC or any number of AV sources (including set-top boxes, DVD players, A/V receivers and video cameras).

### VESA mount for convenience



VESA mount for convenience

# Specifications

## Picture/Display

**Panel Size:** 24.1 inch/61.13 cm  
**Aspect ratio:** 16:10  
**LCD panel type:** IPS technology  
**Backlight type:** W-LED system  
**Pixel pitch:** 0.270(H) mm x 0.270(V) mm  
**Brightness:** 300 cd/m<sup>2</sup>  
**Display colours:** 16.7 M (8 bits)  
**Colour gamut (typical):** sRGB: 115% ,NTSC: 100%  
 \*

**Contrast ratio (typical):** 1500:1  
**SmartContrast:** 50,000,000:1  
**Response time (typical):** 4 ms (Grey to Grey)\*  
**Viewing angle:** 178° (H)/178° (V), @ C/R > 10  
**Picture enhancement:** SmartImage  
**Maximum resolution:** VGA: 1920 x 1200@75 Hz,  
 HDMI/DP: 1920 x 1200@100 Hz  
**Effective viewing area:** 528.2(H) x 339(V) mm  
**Scanning Frequency:** VGA: 30 kHz - 85 kHz  
 (H)/48 Hz - 75 Hz; HDMI/DP: 30 kHz - 135 kHz  
 (H)/48 Hz - 100 Hz (V)  
 sRGB  
 SoftBlue  
 Flicker-free  
**Pixel Density:** 94.07 PPI  
**Display Screen Coating:** Anti-Glare, 3H, Haze  
 25%  
 EasyRead  
 Adaptive sync  
 EyeSafe  
**Smart Link Sync:** When used as a secondary  
 monitor only\*

## Connectivity

**Signal Input:** VGA x 1, HDMI 1.4 x 1, DisplayPort  
 1.2 x 1  
**Sync Input:** Separate Sync, Sync on Green  
**Audio (In/Out):** Audio out  
**Audio (In/Out):** Audio-in  
**HDCP:** HDCP 1.4 (HDMI/DisplayPort)  
**USB Hub:** USB3.2, Gen1, 5G, Upstream: 1 x USB-B  
 Downstream: USB-A x 4 (with x 1 fast charge B.C  
 1.2), USB-C x 1 (data, 15 W)

## Convenience

**Built-in Speakers:** 2 W x 2  
**Plug and Play Compatibility:** DDC/CI, Mac OS,  
 sRGB, Windows 11/10  
**User convenience:** SmartImage, Input,  
 Brightness, Menu, Power On/Off

**OSD Languages:** Brazil Portuguese, Czech, Dutch,  
 English, French, Finnish, German, Greek,  
 Hungarian, Italian, Japanese, Korean,  
 Portuguese, Polish, Russian, Simplified Chinese,  
 Spanish, Swedish, Traditional Chinese, Turkish,  
 Ukrainian  
**Other convenience:** Kensington lock, VESA  
 mount (100 x 100 mm)  
**Control software:** SmartControl\*

## Stand

**Height adjustment:** 150 mm  
**Pivot:** -/+90 degree  
**Swivel:** -/+ 180 degree  
**Tilt:** -5/30 degree

## Power

**ECO mode:** 9.8 W (typ.)  
**Power supply:** Built-in, 100–240 VAC, 50–60 Hz  
**Off mode:** 0.3 W (typ)  
**On mode:** 12.69 W (typ.) (Energy Star test  
 method)  
**Standby mode:** 0.3 W (typ)  
**Power LED indicator:** Operation - White, Standby  
 mode - White (flashing)  
**Energy Label Class:** C

## Dimensions

**Packaging in mm (W x H x D):**  
 615 x 420 x 139 mm  
**Product without stand (mm):** 535 x 348 x 46 mm  
**Product with stand (max height):**  
 535 x 531 x 227 mm

## Weight

**Product with packaging (kg):** 7.89 kg  
**Product with stand (kg):** 5.76 kg  
**Product without stand (kg):** 4.25 kg

## Operating conditions

**Altitude:** Operation: +12,000 ft (3658 m), Non-  
 operation: +40,000 ft (12,192 m)  
**Temperature range (operation):** 0°C to 40 °C  
**Relative humidity:** 20%-80 %  
**Temperature range (storage):** -20°C to 60 °C  
**MTBF (demonstrated):** 70,000 hrs (excluded  
 backlight)

## Sustainability

**Environmental and energy:** RoHS, Energy Star,  
 EPEAT\*  
**Post-consumer recycled plastic:** 85%  
**Recyclable packaging material:** 100 %  
**Specific Substances:** PVC/BFR free housing

## Compliance and standards

**Regulatory Approvals:** CB, CE Mark, ETL, CEC,  
 TUV/GS, TUV Ergo, TCO Certified, TCO Certified  
 Edge, EAC, EAC ROHS, UKCA, EMF, FCC, ICES-003,  
 TÜV Rheinland Low Blue Light (Hardware  
 Solution), eyesafe® CERTIFIED 2.0

## Cabinet

**Finish:** Texture  
**Foot:** Black  
**Front bezel:** Black  
**Rear cover:** Black

## What's in the box?

**Cables:** HDMI cable, DisplayPort cable, Power  
 cable  
**Monitor with stand**  
**User Documentation**



\* "IPS" word mark / trademark and related patents on  
 technologies belong to their respective owners.

\* Response time value equal to SmartResponse

\* sRGB area based on CIE 1931; NTSC area based on CIE 1976

\* EPEAT rating is valid only where Philips registers the  
 product. Please visit <https://www.epeat.net/> for  
 registration status in your country.

\* This monitor supports Smart Link Sync only when used as a  
 secondary monitor in a daisy-chain configuration,  
 connected to a primary monitor that also supports Smart  
 Link Sync.

\* The products and accessories listed on this leaflet may differ  
 by country and region.

\* The monitor may look different from feature images.