



# ExpertBook B5 Flip | B5402FBA



## Power to turn your business world

ASUS ExpertBook B5 Flip is built for business success in style, with a precision-crafted chassis that pushes the limits of lightness — plus a 360° flippable design and a garaged stylus for ultimate flexibility. Powered by cutting-edge 12th gen Intel® Core™ processors, ExpertBook B5 Flip is your perfect portable, powerful partner for the corporate world.



Up to 12<sup>th</sup> Gen CPU



Ultra light

### Ultimate portability

- Lightweight from 1.38 kg
- Aluminum and Mg-Al alloy chassis
- Up to 10 hour battery life<sup>1</sup>, supports fast charging



All-day battery life



360° EgoLift hinge

### Exceptional performance for productivity

- Up to 12th Gen Intel Core™ i7 processor
- Up to 1 TB PCIe® 4.0 performance SSD + 1 TB PCIe® 3.0 performance SSD
- Up to 40 GB DDR5 4800MHz Memory
- Full I/O ports with Thunderbolt™ 4 USB-C, HDMI, USB-A, RJ45, microSD card reader
- Two-way AI noise-canceling technology with hot keys



AI noise-canceling technology



Garaged stylus

### Business focused design

- Up to WiFi 6E\* & ASUS WiFi Master provides seamless connection
- 360° flip design with garaged MPP 2.0 stylus<sup>2</sup>
- User-status indicator on the top cover
- ASUS exclusive NumberPad\*



US military grade



Dual SSDs support RAID 0, 1

### Enterprise-grade durability and security

- MIL-STD 810H durability to cope with business rigors on the road
- IR camera<sup>2</sup> for facial log in and webcam shield
- TPM 2.0 chip<sup>2</sup>, Kensington lock slot, fingerprint sensor

1. ACTUAL BATTERY LIFE MAY VARY DEPENDING ON PRODUCT CONFIGURATION, USAGE, OPERATIONAL CONDITIONS AND POWER MANAGEMENT SETTINGS.  
2. OPTIONAL SPECIFICATION

## Warranty and Support



**3-year global warranty**  
100% free of charge, with no hidden costs.



**Pick Up & Return service**  
Enjoy door-to-door service including pick up, repair, and return.



**MyASUS App**  
Contact customer service, view repair status, read product guides and more.

## Contact Us

### Commercial Support – Contact Us

Self-service:  
Phone:  
Email:

### Commercial Sales – Volume Purchase Inquiries

Email:  
For more information:

# SPECIFICATION S



Model	B5402FBA
Operating system	Windows 11 Pro (ASUS recommends Windows 11 Pro) Windows 11 Home
Processor	Intel®Core™i5-1240P processor 1.7 GHz (12M Cache, up to 4.40 GHz, 12 cores) (Non-vPro / vPro Essential) Intel®Core™i7-1260P processor 2.1 GHz (18M Cache, up to 4.70 GHz, 12 cores) (Non-vPro / vPro Essential) Intel®Core™i5-1250P processor 1.7 GHz (12M Cache, up to 4.40 GHz, 12 cores) (vPro) Intel®Core™i7-1270P processor 2.2 GHz (18M Cache, up to 4.80 GHz, 12 cores) (vPro)
Graphics	Intel®Iris Xe graphics, Intel®UHD graphics
Memory	1x onboard + 1x customer upgradeable SO-DIMM up to DDR5 4800Hz 8GB on board + 8GB/16GB/32GB SO-DIMM
Storage	Up to 1 TB PCIe®4.0 Performance SSD + 1 TB PCIe®3.0 Performance SSD 256 GB/512 GB/1 TB M.2 PCIe®4.0/3.0 Value SSD 512 GB/1 TB M.2 PCIe®4.0/3.0 Performance SSD
Display	14.0" FHD (1920 x 1080), IPS, 16:9, touch screen, wide view, anti-glare, 400 nits, stylus support, 100% sRGB 14.0" FHD (1920 x 1080), IPS, 16:9, touch screen, wide view, anti-glare, 400 nits, stylus support, low power, 72% NTSC
Stylus	MPP 2.0 ASUS Pen (optional)
I/O ports	2 x Thunderbolt™ Type-C (supports 4K display, USB PD 3.0), 1 x USB 3.2 Gen 2 Type-A 1 x USB 2.0 Type-A, 1 x HDMI 2.0, 1 x microSD card reader 1 x 3.5 mm combo audio jack, 1 x RJ45, 1 x Kensington Nano Security Slot
Camera	1.0 MP camera with 720P FHD video, Webcam Shield IR camera with 720P HD video, Webcam Shield
Wireless	Dual-band 2x2 WiFi 6E + Bluetooth®5.2 Dual-band 2x2 WiFi 6 (802.11ax) + Bluetooth®5.2
Audio	2 x speaker, 2 x multi-array microphone ASUS two-way AI Noise-Canceling Technology Cortana voice-recognition support Dolby Atmos Support, Wake on Voice (ISST)
Weight	Starting at 1.38kg
Dimensions (WxDxH)	32.34 x 22.31 x 1.79 cm
Battery	63 Wh, 3-cell, Li-polymer
Security	Fingerprint sensor (with power button), TPM 2.0 (optional), IR Camera (optional), Webcam Shield, Kensington lock slot, BIOS Booting User Password Protection
Keyboard and touchpad	Full-size keyboard with 1.5 mm key travel; backlit (optional); spill-resistant to 66cc* *Quantity used during testing, with duration of 3 minutes
NumberPad	Optional
Featured software	ASUS Control Center (sold separately), ASUS Business Manager, MyASUS
AC adapter	USB Type-C® 65 W; Output: 20 V DC, 3.25 A; Input: 100~240 V AC 50/60 Hz universal
Energy efficiency	Energy Star, EPEAT Gold

DISCLAIMER :  
1. ASUS EXPERT SERIES SERVICE PACKAGE MAY DIFFER FROM COUNTRY TO COUNTRY. WE RECOMMEND THAT YOU CHECK WITH YOUR LOCAL DEALERS FOR THE SPECIFICATIONS OF THE PRODUCTS AVAILABLE IN YOUR COUNTRY.

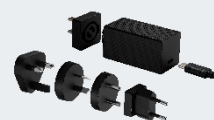
## Recommended Accessories



ASUS SimPro dock 2



ZenScreen MB 165B



65W USB-C Ultra  
Mini Universal  
Adapter