

TPG-25/TPG-65



TPG-125

Details make the difference

This new generation actively supports smooth operation through buffering: Using an optional USB stick*, print data is temporarily stored when a printer is not ready for printing. As soon as the printer is ready to go, TPG-25/TPG-65/TPG-125 automatically send the buffered print job.

Of course, the new generation comes with a broad security package: TPGs support end-to-end encryption and much more.

Our ThinPrint Gateways are the perfect complement for ThinPrint environments – see for yourself!

*USB stick not included

Advantages

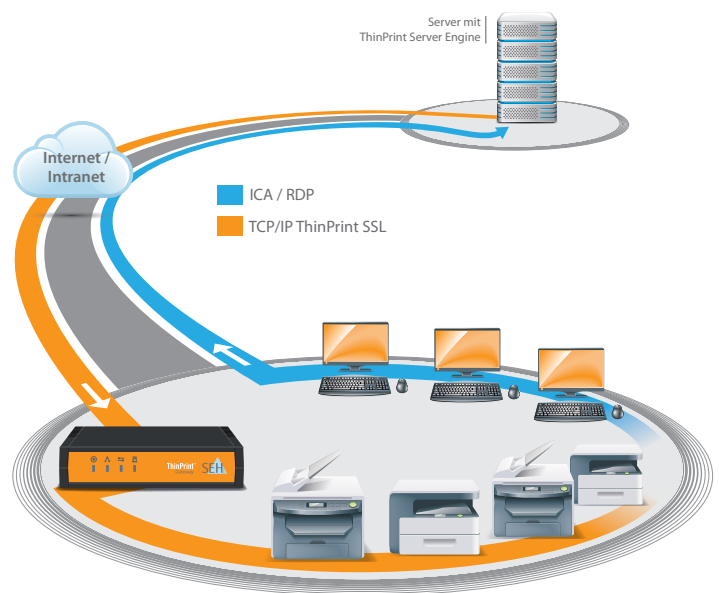
- Optimized bandwidth usage and decompression of print jobs, ensuring application performance and reduced data transfer time
- Additional features such as parameter backup and print job buffering
- Low costs per printer (TCO)
- Easy configuration, administration and management with TPG Control Center or SEH InterCon-NetTool
- Fast and easy installation with ThinPrint AutoConnect and ThinPrint Connection Services

Welcome to the New Generation

The ThinPrint Gateways are specifically designed for environments with implemented ThinPrint technology. With the new generation we have not only changed the look, we have also equipped them with smart features.

The TPG-25 connects up to two, the TPG-65 connects up to six and the TPG-125 connects up to twelve network printers for bandwidth optimized printing. This allows perfectly scalable network printer connections in ThinPrint environments.

This new generation comes with many innovations in terms of maintenance, administration and security, all of which simplify the daily work routine significantly. Each ThinPrint Gateway is equipped with the parameter backup feature. You can quickly and easily secure all TPG parameters within an optional USB stick*. When required, you can simply load these parameters into another TPG. In addition, the Gateways are enhanced with an e-mail notification function. Stay up to date by receiving status reports and precise error messages conveniently via e-mail directly from TPG-25/TPG-65/TPG-125. This feature also allows remote maintenance via e-mail.



Typical Fields of Application

- For all network environments with implemented ThinPrint technology
- Branch offices and outlets
- WANs with narrow bandwidth lease lines or dial connections
- Server-based computing environments (Citrix Xen App, Microsoft Remote Desktop Services/Terminal Services)
- Virtualized environments (VMware, Citrix Xen Desktop or server virtualization)

Features

- For two (TPG-25), six (TPG-65) or twelve (TPG-125) network printers in ThinPrint environments
- Printer vendor independent
- Print job buffering
- E-mail notification, e.g., in case of printer failure messages, status reports
- Parameter backup
- End-to-end encryption
- Integrated ThinPrint Client

TPG-25 / TPG-65 / TPG-125 – Technical Data

ThinPrint-Support

- ThinPrint Client
- SSL Printing
- Auto Connect Support
- Connection Service Support
- For up to two (TPG-25), six (TPG-65) oder twelve (TPG-125) Network printers

Interfaces and Network Connectors

- 1x 10BaseT/100BaseTX/1000BaseT
- 1x USB 2.0 High Speed

Configuration and Management

- SEH InterCon-NetTool for Windows, Linux, Mac
- TPG Web Control Center (monitoring, configuration, administration, firmware update)
- E-Mail, SNMP, SNMP-MIB II-compatible, SNMPv1, SNMPv3, Bonjour

Supported Operating Systems

- Operating system independent

Supported Protocols

- IPv6-enabled
- TCP/IP:
DHCP, BootP, ARP, TCP, UDP, ICMP, IGMP, TFTP, HTTP, HTTPS, Zeroconf, DNS, SLP, SNMPv1, SNMPv3, SMTP, POP3, SSL/TLS, IPPv1.0, IPPv1.1, RawTCP, Bonjour, etc.
- Windows:
SMB/CIFS (NetBIOS over TCP/IP), WINS, etc.

Security

- Encryption: SSL 3.0, TLS 1.0, HTTPS, FTPs
- Authentication: 802.1X (EAP-MD5, EAP-TLS, Cisco EAP (LEAP), EAP-FAST, EAP-TTLS, PEAP)
- Access control (ACL)
- Certificate Management: self-signed certificate, certificate request, root certification, PKCS#12-certificate, S/MIME certificate
- Password protection
- Port access control

Printing protocols and methods

- Socket/Raw Printing
- LPR/LPD Printing
- IPP v1.1 Printing, IPP Secure Printing

Supported Languages

- English, German, French, Spanish, Italian, Portuguese, Japanese, Korean, Chinese (traditionl and simplified)

Tests (Notifications)

- CE: EN55022 Klasse B, EN55024, EN62301
- FCC Class A
- VCCI Class A
- C-TICK
- ROHS

Power supply

- External power supply
Output: 5 V, 2 A
Input: 100–240 V ~

Operating Environment

- Temperature: 5–40 °C
- Relative humidity: 20–80 %

Dimensions (Length, Width, Height)

- 99 x 140 x 32 mm

Weight

- 120 g

Order Numbers

- | | |
|------------------------|-------------------------|
| • M03870 – TPG25 (EU) | • M03890 - TPG125 (EU) |
| • M03871 – TPG25 (UK) | • M03891 - TPG125 (UK) |
| • M03872 – TPG25 (US) | • M03892 - TPG125 (US) |
| • M03873 – TPG25 (JP) | • M03893 - TPG125 (JP) |
| • M03874 – TPG25 (AUS) | • M03894 - TPG125 (AUS) |
| • M03880 – TPG65 (EU) | |
| • M03881 – TPG65 (UK) | |
| • M03882 – TPG65 (US) | |
| • M03883 – TPG65 (JP) | |
| • M03884 – TPG65 (AUS) | |



SEH Computertechnik GmbH

Südring 11
33647 Bielefeld
Deutschland

Phone +49 (0) 5 21 9 42 26-29
Fax +49 (0) 5 21 9 42 26-99
Support +49 (0) 5 21 9 42 26-44
Internet www.seh.de
Email info@seh.de



ThinPrint GmbH

Alt-Moabit 91 a/b
10559 Berlin
Deutschland

Telefon +49 (0) 30 39 49 31-0
Fax +49 (0) 30 39 49 31-99
Internet www.thinprint.de
E-Mail info@thinprint.com



Scannen Sie diesen Barcode mit
Ihrem Smartphone

<http://www.seh-technology.com/products/thinprint-gateways.html>

For more information and a full list of all technical details, please refer to the electronical data sheets on our website www.seh-technology.com.