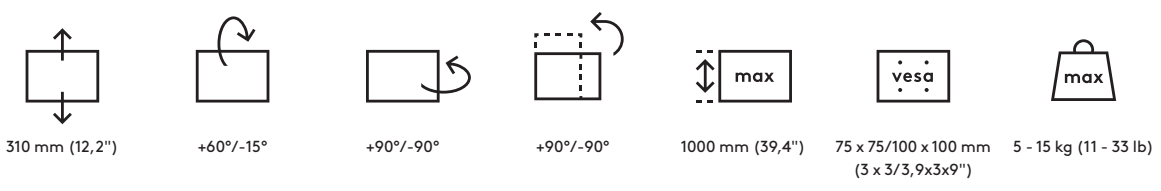
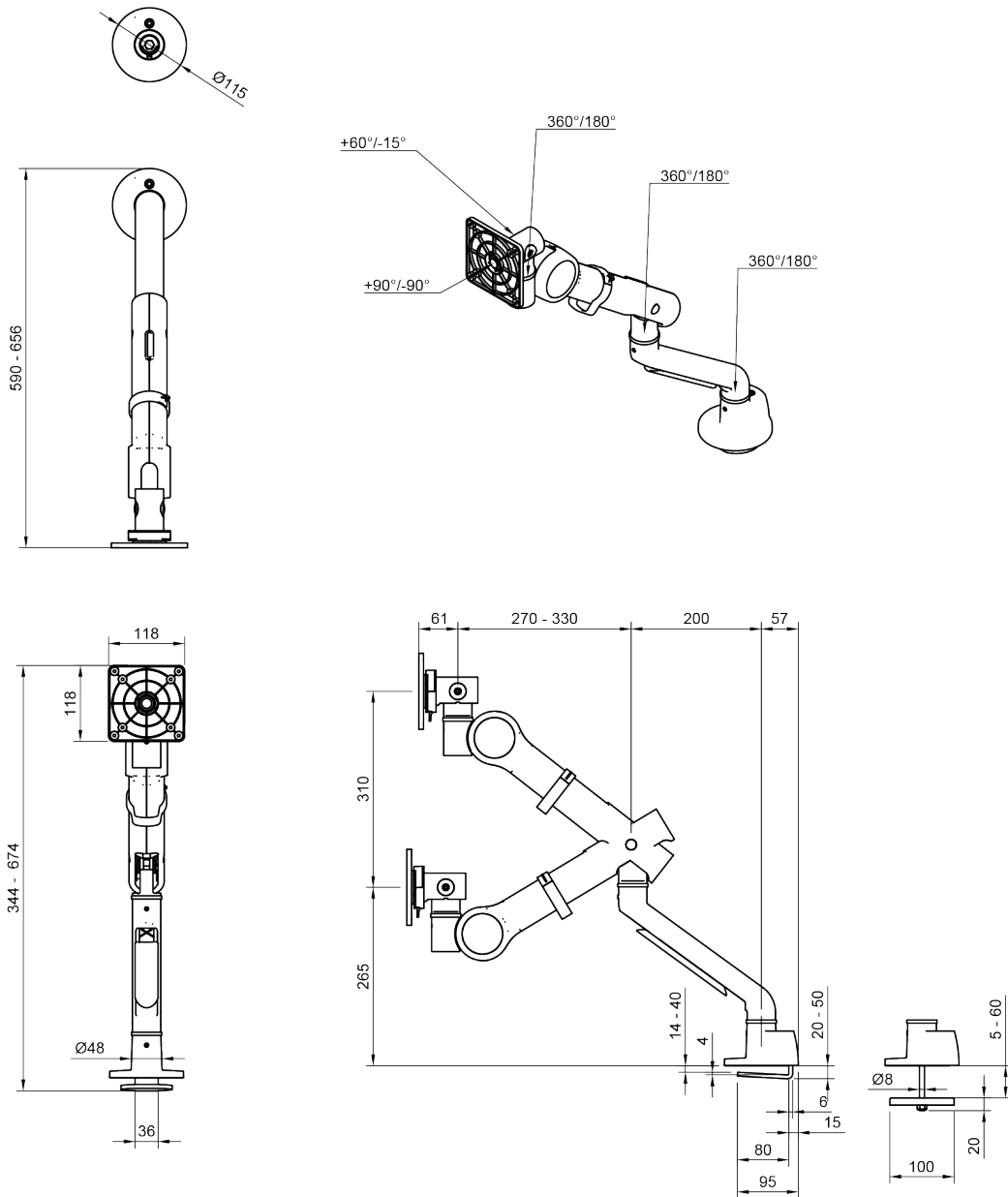


48.823







# Viewgo pro monitor arm HD - desk 823

Elevate your workspace with the Viewgo pro HD ergonomic monitor arm. Perfect for heavier monitors. Even larger curved monitors are a breeze to move around. Enhance employee productivity and comfort, while reclaiming precious desk real estate and fostering a clutter-free environment. The Viewgo pro not only conforms to all ergonomic requirements but also boasts an elegant design, all at a compelling price point. Installation is a piece of cake, and its versatile top-access clamp ensures compatibility with nearly all types of desks.

- Dynamic height adjustment of 310 mm (12,2")
- Independent depth adjustment
- Fitted with a lifetime warranty adjustable tension spring
- Fitted with cable clips to guide cables tidily
- Main components made of aluminium
- Standard VESA quick release
- Compatible with VESA MIS-D 75 x 75/100 x 100 mm
- Monitor: tilt +60°/-15°, swivel +90°/-90°, rotate +90°/-90°
- Arm: swivel 360°
- Arm swivel lock set at +90°/-90° (can be switched off)
- Weight capacity min. 5 kg - max. 15 kg per monitor (11 - 33 lb)
- Equipped with desk clamp mount (top access clamp) and desk outlet mount
- Suitable for desktop thicknesses from 14 to 40 mm (0,6 - 1,57") (clamp) or 60 mm (2,36") (grommet)
- Maximum monitor size: height 1000 mm (39,4")
- Sturdy, scratch-free attachment to any surface thanks to protective rubber anti-slip coating
- Easy installation with the tools provided
- Supports monitors in portrait and landscape mode
- Tension gauge ensures easy monitor setup



**Viewgo pro monitor arm HD - desk 823** 2024/03/25

 <b># 48.823</b>	 <b>790 x 150 x 130 mm</b>	 <b>1 pcs</b>
 <b>black</b>	 <b>4,90 kg</b>	 <b>805410488239</b>