

Rittal – The System.

Faster – better – everywhere.

Door-operated switch – SZ 4127.010

Date : Jun 24, 2021

ENCLOSURES

POWER DISTRIBUTION

CLIMATE CONTROL

IT INFRASTRUCTURE

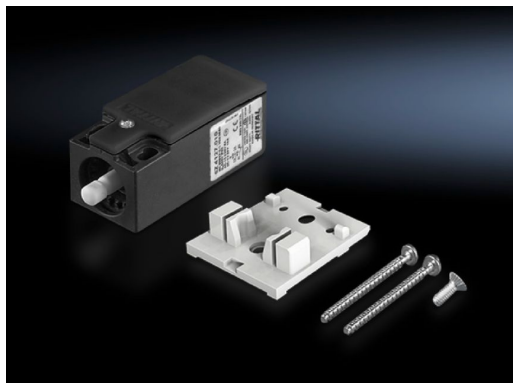
SOFTWARE & SERVICES

FRIEDHELM LOH GROUP



Door-operated switch – SZ 4127.010

created: 24.06.2021 on www.rittal.com/com-en



Product description

Design: Without connection cable

**Protection category
IP to IEC 60 529:** IP 40

Product description

**Rated operating
voltage:** 400 V

Installation options: for LED system light
for standard and courtesy light without integral door-operated switch
for cooling units and air/water heat exchangers

**For rated current
(max.):** 240 V AC, 6 A

**Rated insulation
voltage:** 400 V AC

**Rated impulse
withstand voltage,
phase to phase:** 6000 V AC

Packs of: 1 pc(s).

Weight/pack: 0.08 kg

**Copper weight (kg
per piece):** 0

EAN: 4028177497740

Customs tariff 85365080

number:	
ETIM 7.0:	EC002626
ETIM 6.0:	EC002626
eCl@ss 8.0/8.1:	27189266
eCl@ss 6.0/6.1:	27119116
Product description:	SZ Door-operated switch, with accessory for interior installation, without connection cable
Approvals	
Approvals:	CCC CQC CSA UL
Certificates:	EAC
Declarations:	Declaration of conformity NA