



ArticonA International BV, Withuisveld 30, 6226 NV Maastricht,
Netherlands , support@articonA.eu

1- Pair Gigabit Port PoE+ IEEE 802.3at/af Mid-Span Power Supply

(High Power PoE Injector)

User's Manual

FCC Warning

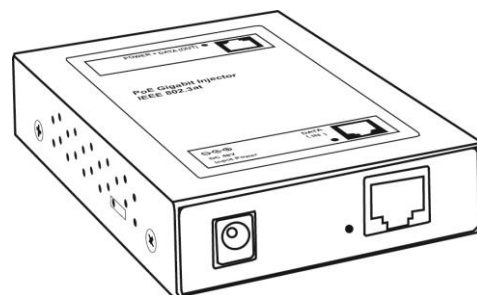
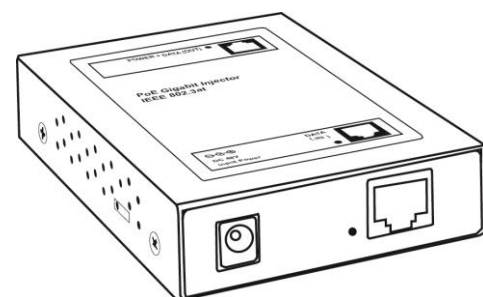
This device has been tested and found to comply with limits for a Class A digital device, pursuant to Part 15 of FCC Rules. These limits are designed to provide reasonable protection against harmful interference when the equipment is operated in a commercial environment. This equipment generates and radiates radio frequency energy and, if not installed and used in accordance with the user's manual, it may cause interference in which case users will be required to correct interference at their own expenses.

CE Warning

This is a Class A product. In a domestic environment, this product may cause radio interference in which case the user may be required to take adequate measures.

Introduction

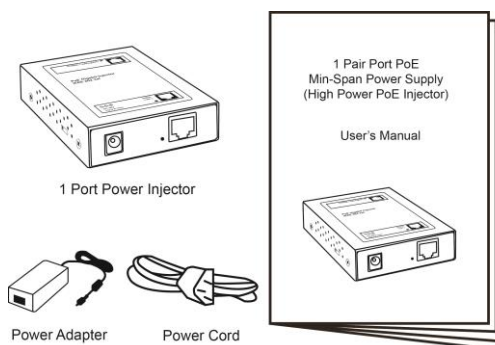
This PoE+ Mid-Span is 1-pair port power supply consisting of 1 Gigabit Ethernet data input ports, and 1 Gigabit Ethernet data output ports with 48~56V power equipped, which is fully IEEE 802.3at compliant. Any Cat. 5/5e cable (or above cable) can directly connect to the input port and then come out "Data with Power" from output port. It is smart plug and play and very easy to install in any existing networking system, to bring in PoE+ features without any new reconfiguration.



Package Contents

Before you start to install this PoE+ Mid-Span Power Supply, please verify your package that contains the following items:

- One PoE+ Mid-Span Power Supply
- One Power Adapter with One Power Cord
- One User's Manual



Note: If any of these items is found missing or damaged, please contact your local supplier for replacement.

Key Features

- 1 "Data" input ports compliant with IEEE 802.3 10BaseT, IEEE 802.3u 100BaseTX and IEEE 802.3ab 1000BaseT
- 1 PSE/PoE+ output ports compliant with IEEE 802.3af PoE and IEEE 802.3at PoE+
- Supporting the power Max. 30 W for PSE/PoE+ port
- Output port has output current limited, short-circuit protection, complete Power Device (PD) detection and classification
- Smart plug & play

Front Panel (LEDs)

LED Indicators

LED	Status	Description
Power	On	PoE Power is on.
	Off	PoE Power is off.
PD	On	PD Link on
	Off	No Link

Connections

Power Device/Existing Switch to this 1-Pair Port Mid-Span Power Supply

Use Cat. 5/5e twisted-pair cable (or above cable) from the existing switch to the "Data" input port of this Mid-span Power Supply, and then connect the "Data + Power" output port to the Power Device, such as Wireless AP, another switches with PD function...etc.

Technical Specifications

Standards	IEEE 802.3af IEEE 802.3at IEEE 802.3 10BaseT IEEE 802.3u 100BaseTX IEEE 802.3ab 1000BaseT
Features	Number of Ports: 1 x Input (data only) Port 1 x Output (data + power) Port
LED Indicators	Power and PD Link
Power Input	Power Adapter: 100 ~ 240VAC, 50/60Hz (47 ~ 63 Hz) to 54VDC @ 0.92A
Power Output	48V/DC at Full 30 W Output Supported
Power Consumption	50 Watts (Max)
Dimensions	102 x 75 x 23 mm (L x W x H)
Weight	0.19 kg
Operating Temperature	0 to 45°C
Storage Temperature	-20 to 85°C
Humidity	10 to 90% RH (non-condensing)
Certifications	FCC Class A, CE