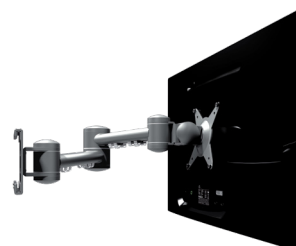
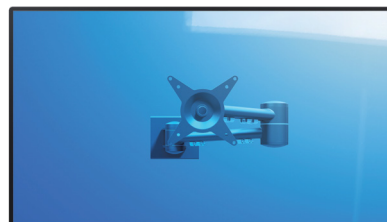
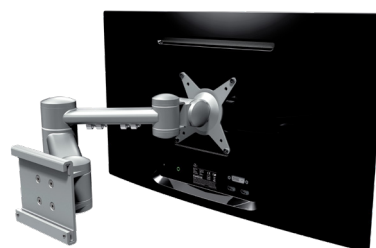


52.142

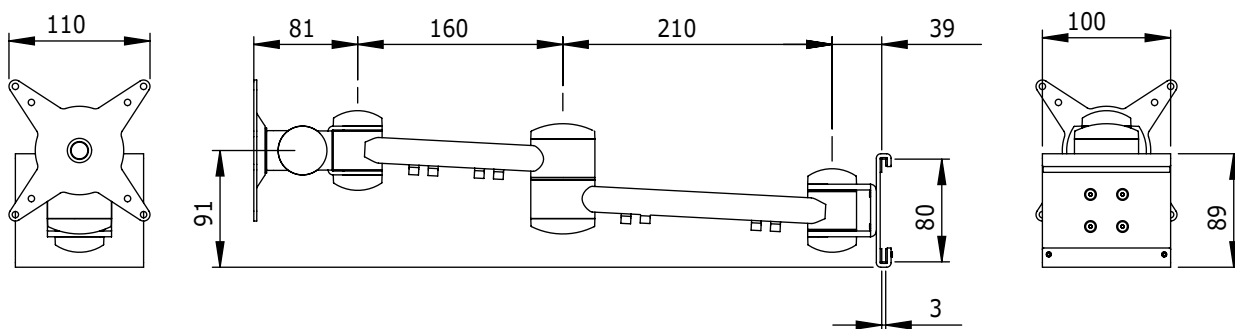
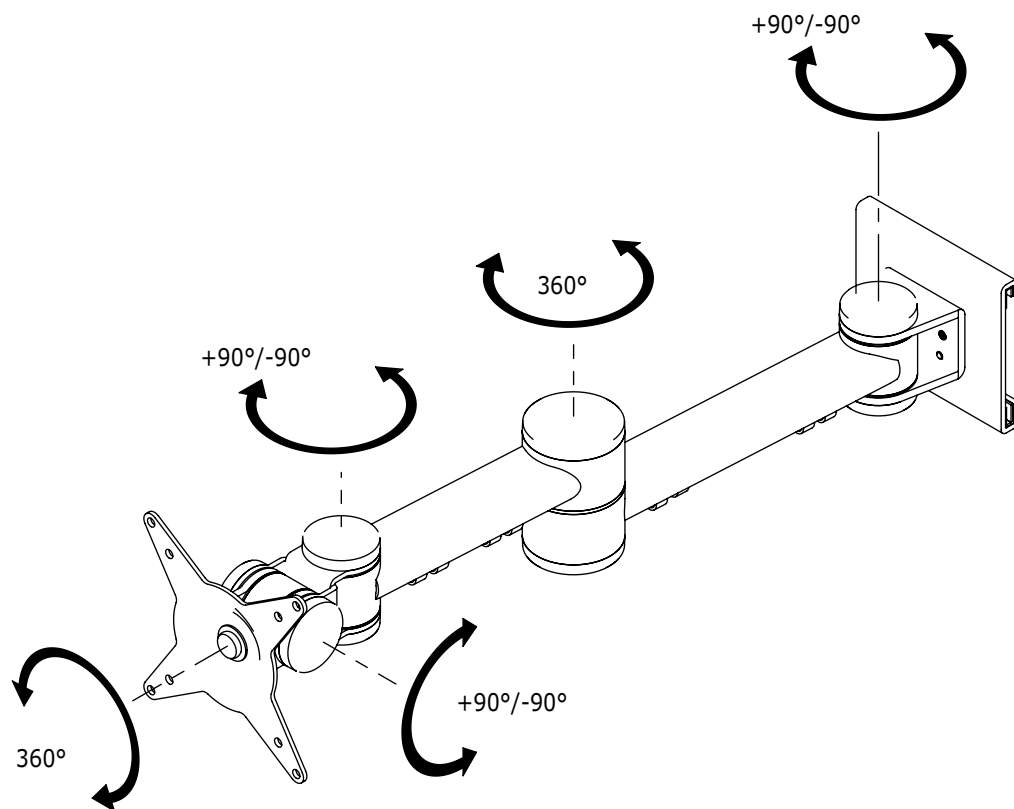
## ViewMate Style Toolbar Mount 142

Having a durable construction, this monitor arm offers solid support for any monitor up to 15kg. Its depth adjustment ensures that monitors can be set at a comfortable viewing distance. Its horizontal glide ensures easy placement anywhere along the toolbar.

- Articulating multi-pivot arm
- Mounts a single monitor to the ViewMate Style toolbar rail
- Simply slides onto the toolbar rail
- Comes with all necessary fasteners
- Max. weight capacity of 15kg/monitor (up to 24"/24"W)
- Rotate 360°, tilt +90°/-90°, swivel +90°/-90°
- Compatible with VESA patterns 75x75/100x100mm MIS-D
- Depth adjustable over 451mm
- Min. 119mm clearance between monitor and rail



 **viewmate**



DFX.# 52.142

silver

550 x 130 x 120mm

2,3kg

805410521424



52.112



24"W/61cm



15kg



0mm



180°



180°



360°



75/100mm

Dealer