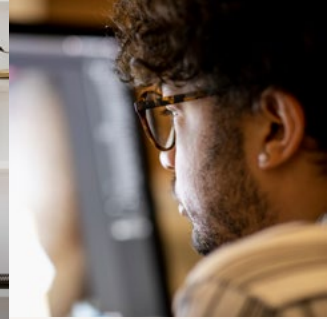


S80A ViewFinity monitor

27" Monitor | LS27A800NMP
32" Monitor | LS32A800NMP



Experience bigger picture and deeper detail UHD Resolution with the Samsung S80A ViewFinity professional monitor.

Partner Logo



Experience

From the design of the bezels to intuitive tools, our monitors offer enhanced user experience.

- **Flat Display** (27" IPS, 32" VA)
- **Connectivity** (1xDP, 1xHDMI, 5xUSB)
- **1.07 Billion Colors**
- **Wide Color Gamut** (99% sRGB)
- **Multitasking Tools** (PiP, PbP)



Well-being

Our products maximise viewing comfort, while protecting against eye strain.

- **Adaptive Picture** (Auto adjust brightness & color)
- **Eye Saver Mode** (Minimize blue light emission)
- **Flicker Free**
- **Ergonomic Stand** (HAS, Tilt, Swivel & Pivot)
- **Wall Mount** (100 x 100)



Sustainability

We work to push technology forward with more environmentally conscious innovations.

- **Eco Saving Plus¹** (use up to 10% less energy)
- **TCO Certified²** (9.0)
- **EPEAT Silver³**

Please see back page for disclaimers.

The power to perfect professionals.

SAMSUNG

S80A ViewFinity monitor

LS27A800NMP
LS32A800NMP



Key features

UHD

UHD Resolution: With four times the resolution of 1080p monitors, the S80A Series makes small text easy to read, while details in photos, illustrations and videos are easier to see and work with.



1 billion colors with HDR10: A richer color reproduction for lifelike images, 1 billion colors for color accuracy and deep blacks with bright whites with HDR10, for the most vibrant color ever.



Eco Saving Plus¹: Eco Saving Plus technology can reduce up to 10% of power consumption when compared with the maximum brightness level by adjusting the brightness of the screen's black sections automatically.



Intelligent Eye Care⁴: TÜV certified Intelligent Eye Care means brightness and color temperature adjust automatically for optimization in any space or lighting conditions, while a flicker-free display and a low blue light take better care of your eyes.

The perfect pose



Swivel



Tilt



Pivot

90° to the right



HAS

Height Adjustable Stand

3 year warranty

What's in the box?

HDMI Cable
Power Cable
USB 3.0 Cable

Accessories may differ by country.

Connectivity

- 1 Headphone IN
- 2 USB 2.0 for Service
- 3 USB 3.0
- 4 USB 3.0
- 5 HDMI IN
- 6 DisplayPort IN
- 7 USB 3.0/PC IN
- 8 USB 2.0



Please see back page for disclaimers.

The power to perfect professionals.

SAMSUNG

S80A ViewFinity monitor



		LS27A800NMP	LS32A800NMP
Display	Screen Size	27"	32"
	Resolution	3840X2160	3840X2160
	Flat/Curved	Flat	Flat
	Aspect Ratio	16:9	16:9
	Panel Type	IPS	VA
	Brightness in cd/m2 (Typ)	300	300
	Contrast Ratio Static	1000:1	2500:1
	Color Support	1.07 Billion	1.07 Billion
	Color Coverage	99% sRGB	99% sRGB
	HDR	HDR 10	HDR 10
	Refresh rate	60Hz	60Hz
	Response Time (GTG)	5ms	5ms
Connectivity	D-Sub (Analog)	No	No
	DVI	No	No
	HDMI	1x HDMI 2.0	1x HDMI 2.0
	Display Port (DP)	1x 1.2	1x 1.2
	Display Port Out	No	No
	USB 2.0	2x	2x
	USB 3.0	3x	3x
	Ethernet (LAN)	No	No
Other	Headphone	1x	1x
	Speakers	No	No
	Built-in Camera / KVM Switch	No / No	No / No
	Additional Features	Eco Saving Plus ¹ , Flicker Free, Eye Saver Mode	Eco Saving Plus ¹ , Flicker Free, Eye Saver Mode
	Certifications, Standards & Licenses	TCO Certified (9.0) ² , EPEAT Silver ³ , TÜV Intelligent Eye Care ⁴	TCO Certified (9.0) ² , EPEAT Silver ³ , TÜV Intelligent Eye Care ⁴
	Ergonomic Stand	Tilt: -2.0°(±2.0°)~25.0°(±2.0°)	Tilt: -2.0°(±2.0°)~25.0°(±2.0°)
		Swivel: -30.0°(±2.0°)~30.0°(±2.0°)	Swivel: -30°(±2.0°) ~ 30°(±2.0°)
		Pivot: -2.0°(±2.0°)~92.0°(±2.0°)	Pivot: -2.0°(±2.0°) ~ 92.0°(±2.0°)
		HAS: 120.0mm(±5.0mm)	HAS: 120.0mm(±5.0mm)
	Power Consumption (Typ)	28W	37W
Set Dimension (WxHxD)	With Stand: 615.5 x 551.9 x 196.4mm	With Stand: 716.1 x 580.4 x 211.4mm	
	Without Stand: 615.5 x 368.2 x 42.7mm	Without Stand: 716.1 x 424.7 x 41.3mm	
Set Weight	With Stand: 6.4kg	With Stand: 7.0kg	
	Without Stand: 4.4kg	Without Stand: 4.9kg	

Please see back page for disclaimers.

SAMSUNG

Samsung Electronics Co. Ltd.

Samsung Electronics Co., Ltd. inspires the world and shapes the future with transformative ideas and technologies. The company is redefining the worlds of TVs, smartphones, wearable devices, tablets, cameras, digital appliances, medical equipment, network systems, and semiconductor and LED solutions. For the latest news, please visit the Samsung Newsroom at news.samsung.com.

Find out more at:

displaysolutions.samsung.com

<https://displaysolutions.samsung.com/monitor/detail/1792/S27A800>

<https://displaysolutions.samsung.com/monitor/detail/1793/S32A800>

All tests and measurements were conducted by Samsung internally.

¹Based on internal testing data of S80PB, S80TB and T45F monitors only. Testing compared energy usage of these models with Eco Saving Plus mode switched on high setting and switched off. Actual energy savings may vary based on usage conditions, brightness levels, and model selected. Eco Saving Plus is not available in Dynamic Contrast Mode, Game Mode, Eye Saver Mode, or when PIP/PBP Mode is on.

²See www.tccertified.com for more information.

³See www.epeat.net for more information.

⁴Intelligent Eye Care is certified by TÜV Rheinland. For more details, visit www.tuv.com.

Copyright © 2023 Samsung Electronics Co. Ltd. All rights reserved. Samsung is a registered trademark of Samsung Electronics Co. Ltd. Specifications and designs are subject to change without notice. Non-metric weights and measurements are approximate. All data were deemed correct at time of creation. Samsung is not liable for errors or omissions. All brand, product, service names, and logos are trademarks and/or registered trademarks of their respective owners and are hereby recognized and acknowledged.

Samsung Electronics Co. Ltd.

416, Maetan 3-dong, Yeongtong-gu, Suwon-si, Gyeonggi-do 443-772, Korea.