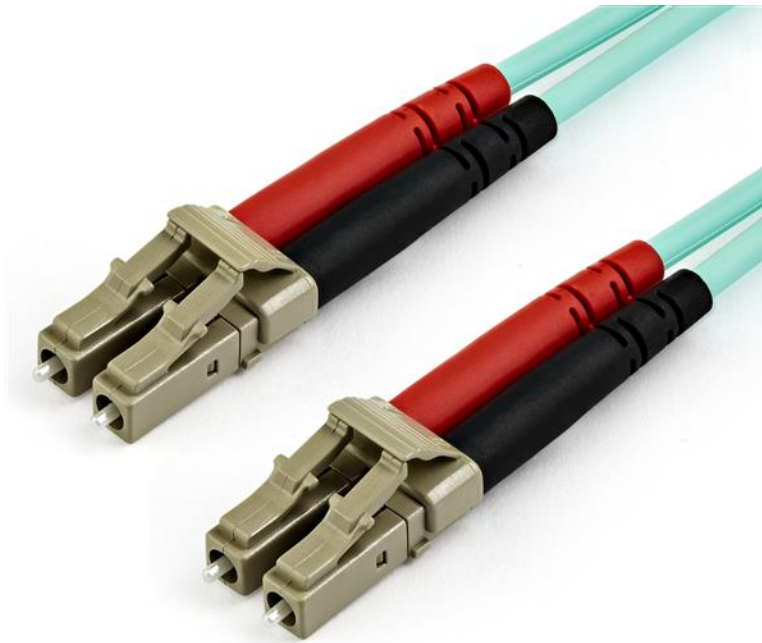


7 m OM3 LC to LC Multimode Duplex Fiber Optic Patch Cable

Product ID: A50FBLCLC7



This OM3 LC to LC Multimode Duplex Fiber Optic Patch cable features 50/125 micron fiber and supports high-bandwidth data transmission over a 10 Gigabit Ethernet connection.

Built for Performance

With laser-optimized multimode fiber (LOMMF), the patch cable is ideal for connecting 850 nm Vertical Cavity Surface Emitting Laser (VCSEL) and LED sources. The high-speed connectivity on the aqua fiber-optic cable provides a high-bandwidth solution for your data centers or high-density applications.

Reliable Connection

Each OM3 fiber cable is individually tested and certified to be within acceptable optical insertion loss limits for guaranteed compatibility and 100% reliability.

High-Quality Construction

Housed in a LSZH (Low-Smoke, Zero-Halogen) flame retardant jacket, this fiber-optic cable ensures minimal smoke, toxicity and corrosion when exposed to high sources of heat, or in the event of a fire. It's the best choice for a wide range of environments, including industrial settings, central offices and schools, as well as residential settings where building codes are a consideration.

A50FBLCLC7 is backed by a StarTech.com lifetime warranty and free lifetime technical support.

Certifications, Reports and Compatibility



Applications

- Use in 10 Gigabit high-speed network environments
- High-speed connectivity for high-density applications

Features

- Reliable connectivity for your 10Gb Ethernet applications
- Provides high bandwidth with laser-optimized multimode fiber (LOMMF)
- Easily connect to your VCSEL and LED sources
- Certified to ensure attenuation loss meets industry standards
- Built with a Low-Smoke, Zero-Halogen flame retardant jacket for a safe connection

Hardware	Warranty	Lifetime
	Fiber Size	50/125
	Fire Rating	LSZH Rated (Low Smoke Zero Halogen)
Performance	Cable Rating	10Gbps / 40Gbps / 100Gbps
	Fiber Classification	OM3
	Maximum Data Transfer Rate	100Gbps
	Type	Multi Mode
	Wavelength	850nm
Connector(s)	Connector A	1 - Fiber Optic LC Duplex Male
	Connector B	1 - Fiber Optic LC Duplex Male
Environmental	Humidity	0~90% RH
	Operating Temperature	-20°C to 60°C (-4°F to 140°F)
	Storage Temperature	-20°C to 60°C (-4°F to 140°F)
Physical Characteristics	Cable Length	7 m [23 ft]
	Color	Aqua
	Product Height	10 mm [0.4 in]
	Product Length	7 m [23 ft]
	Product Width	13 mm [0.5 in]
	Weight of Product	96 g [3.4 oz]
Packaging Information	Package Height	20 mm [0.8 in]
	Package Length	20 cm [7.9 in]
	Package Width	21.5 cm [8.5 in]
	Shipping (Package) Weight	106 g [3.7 oz]
What's in the Box	Included in Package	1 - 7 m Fiber Patch Cable

Product appearance and specifications are subject to change without notice.