

IFP INTERACTIVE DISPLAYS**INFORMATION**

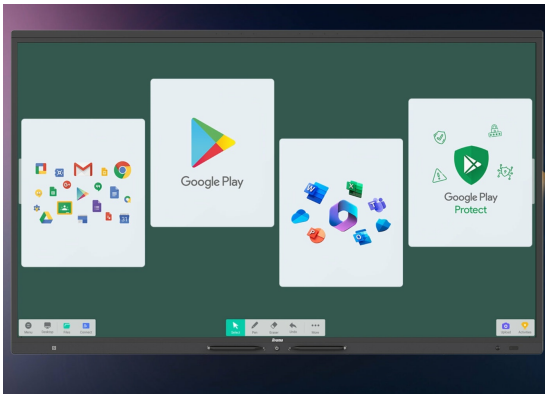
55" Google EDLA Certified IFP - Interactive display for seamless integration and collaboration in education and enterprise



The TE5513A-B3AG is a 4K UHD Google EDLA Certified interactive display that redefines performance and precision. Featuring a Zero-Gap Air Bonding LCD screen to eliminate parallax and with PureTouch-IR+ with Palm Rejection, it ensures smooth, accurate interaction.

Powered by iiWare 21E with Android 14-EDLA, WiFi-6E with BT 5.0 connectivity, [iiControl](#) (DMS), [iiShare](#) and integrated [EShare](#) app (wireless screen sharing), it integrates seamlessly into your ecosystem.

Enjoy added features like a PIR motion sensor for energy efficiency; perfect for workplaces and educational spaces, it fosters collaboration, communication, and progress.



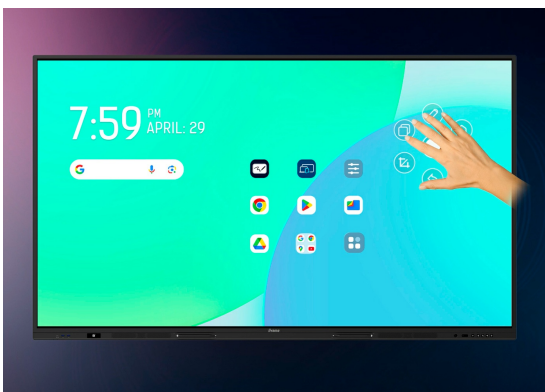
Google EDLA Certified

Google Enterprise Device License Agreement allows Google apps, accounts, files, and collaborative tools to be easily accessed directly from the Google EDLA certified iiyama displays, offering seamless integration with the Google ecosystem and the entire Microsoft 365 suite for enhanced user experience, productivity, and collaboration in all environments, especially the education and enterprise sectors alike.



iiWare 21E (Android 14 OS)

Empower your presentations with iiWare 21E, featuring Google EDLA, iiControl (DMS), iiShare (Wireless Presentation), WhiteBoard, Cloud Drives, iiBrowser and file manager via an intuitive and user-friendly software that allows you to effortlessly manage, customize, and access various applications with ease.



Quick Radial Menu

This feature provides a quick way to operate the interactive display. Long press with five fingers to bring up the Quick Radial Menu. Users can directly select the frequently used apps in the apps menu and place them in the Quick Radial Menu.



iiControl - Device Management System

iiControl provides organizations with a convenient and fast unified management solution for terminal equipment, builds an efficient and real-time equipment management system, helps digitize the campus/office estate environment and makes device management ultra convenient. iiControl DMS is committed to maintaining compliance with GDPR.

SPECIFICATION

01 DISPLAY CHARACTERISTICS

Design	Thin bezel
Diagonal	54.6", 138.8cm
Panel	IPS
Touch Glass	Anti-Glare glass with Anti-Gloss treatment, Anti-Bacterial coating, Ultra Smooth writing, Zero-Gap Air Bonding
Panel	IPS
Native resolution	3840 x 2160 (8.3 megapixel 4K UHD)
Aspect ratio	16:9
Brightness	500 cd/m ² (max.)
Light transmittance	88%
Static contrast	1200:1
Response time (GTG)	8ms
Viewing zone	horizontal/vertical: horizontalhorizontal178°/178°, right/left: 0°/0°, up/down: 89°/89°
Colour support	1.07B 10bit (8bit + Hi-FRC) (NTSC 72%)
Horizontal Sync	30 - 135kHz
Viewable area W x H	1209.6 x 680.4mm, 47.6 x 26.8"
Bezel width (sides, top, bottom)	16.7mm, 14.1mm, 46.7mm
Pixel pitch	0.315mm
Bezel colour and finish	black, matte

02 TOUCH

Touch technology	PureTouch-IR ⁺
Touch points	40, 10pt writing (HID, only with supported OS, 32pt Touch with Android)
Scan rate	200Hz
Touch response time	5ms
Touch accuracy	+/- 1mm
Touch method	stylus, finger, glove (Passive pen, Opaque objects)
Touch interface	USB
Supported operating systems	All iiyama monitors are Plug & Play and compatible with Windows and Linux. For details regarding the supported OS for the touch models, please refer to the driver instruction file available in the downloads section.
Palm rejection	yes

03 INTERFACES / CONNECTORS / CONTROLS

Digital signal input	HDMI x2 (v2.0) (H1 CEC/ARC / H2 CEC) DisplayPort x1 (v1.2) USB-C x2 ((DP-Alt, Data, Touch) front 100W PD, side 65W PD)
Audio input	Mini jack x1 (Microphone)

Monitor control input	RS-232c x1 (DSUB 9pin) RJ45 (LAN) x2 (LAN Control)
Digital signal output	HDMI x1 (2.0, max. 3840x2160 @60Hz, YUV444 / RGB444) USB-C x1 (2.0, max. 3840x2160 @60Hz, YUV444 / RGB444, DP1 Alt Mode, USB-C X1 (3.2 Gen 1, 5 Gbps))
Audio output	S/PDIF (Optical) x1 Mini jack x1 (Headphone) Speakers 2 x 20W (Front facing + 20W Subwoofer on the backside)
Monitor control output	OPS Slot x1 (Intel OPS 80pin - When installed: USB-C front: 65W, side: 15W)
HDCP	2.2
USB ports	x6 (media playback / peripherals / storage – front side: 1x USB-C 3.2 (Gen 1, 5Gbit, 100W PD), 2x 3.2 (Gen 1, 5Gbit), side: 1x USB-C 2.0 (480 Mbps, 65W PD), 1x 2.0 (480Mbps), 1x 3.2 (Gen 1, 5Gbit))
RJ45 (LAN)	x2 (IN / OUT, Auto switch for PC & Android, 1000MB)

04 FEATURES

Integrated software	iiWare 21E (Android 14 OS, Android 16 summer 2026) featuring Google EDLA, iiControl (DMS), WhiteBoard, web browser, file manager, cloud drives and iiShare for wireless connection with Windows/iOS/Android devices
WiFi	yes (WiFi-6E, BT 5.0)
Hardware	SOC: RK3576 Octa-core A72*4 + A53*4, GPU: Mali G52 MC3, RAM: 6 GB, ROM: 128 GB
Extra	Ambiant light Sensor, PIR Motion Sensor, NFC, Slot for optional OPS PC, 4x Touch pen
Max. non-stop operating time	24/7 (While the components are rated for 24/7 operation, we recommend usage not exceeding 18 hours per day to ensure optimal product longevity)
Media playback	yes
Glass thickness	3.2mm
Glass hardness	7H
Housing (bezel)	metal
OSD key lock	yes

05 GENERAL

OSD languages	EN, DE, FR, ES, IT, RU, CZ, NL, PL, CAT, SV, FI, DA, NB, ET, LV, LT, HU, UK
Control buttons	Power, Home, Freeze, Volume, Input (source)
User controls	general settings (input, volume, backlight), audio (volume, bass, treble, balance, sound mode, mute), screen settings (aspect ratio, pixel shift), display settings (brightness, contrast, hue, display mode colour temp), settings (wireless & networks, share, device, personal, system)
Blue light reducer	yes
Flicker free	yes
Plug&Play	DDC2B
Warranty	5 years (for details and eligible countries please check the Warranty section of our website)

06 MECHANICAL

Orientation	landscape
--------------------	-----------

Fanless design	yes
VESA mounting	400 x 400mm
Operation temperature range	0°C - 40°C
Storage temperature range	- 20°C - %2°C
MTBF	50.000 hours (excluding backlight)

07 ACCESSORIES INCLUDED

Cables	power (EU 3m, UK 3m), USB (3m), HDMI (3m)
Touch pen	x4 (Dual function tips)
Guides	quick start guide, safety guide
Other	Wall Mounting Bracket (VESA 400x400), Webcam Mounting Bracket
Remote control	yes (batteries included)

08 POWER MANAGEMENT

Power supply unit	internal
Power supply	AC 100 - 240V, 50/60Hz
Power usage	126W typical, 0.5W stand by, 0.3W off mode

09 SUSTAINABILITY

Regulations	CB, CE, TÜV-GS, EAC, RoHS support, ErP, WEEE, REACH (ROHS)
Energy efficiency class (Regulation (EU) 2017/1369)	G
REACH SVHC	above 0.1%: Lead

10 DIMENSIONS / WEIGHT

Product dimensions W x H x D	1267 x 765.5 x 117.5mm
Box dimensions W x H x D	1385 x 865 x 185mm
Pallet volume	4pcs
Weight (without box)	28.7kg
Weight (with box)	34.8kg
EAN code	4948570128105

11 COMPATIBLE ACCESSORIES

Other OPC51204BC-1 (OPS Slot PC), MD-CAR2031-B1, MD-WLIFT2031-W1, MD-CART02-S1, UC CAM120ULB-1, UC-CAM10PRO-1, WP-D0002

12 EU ENERGY EFFICIENCY LABEL

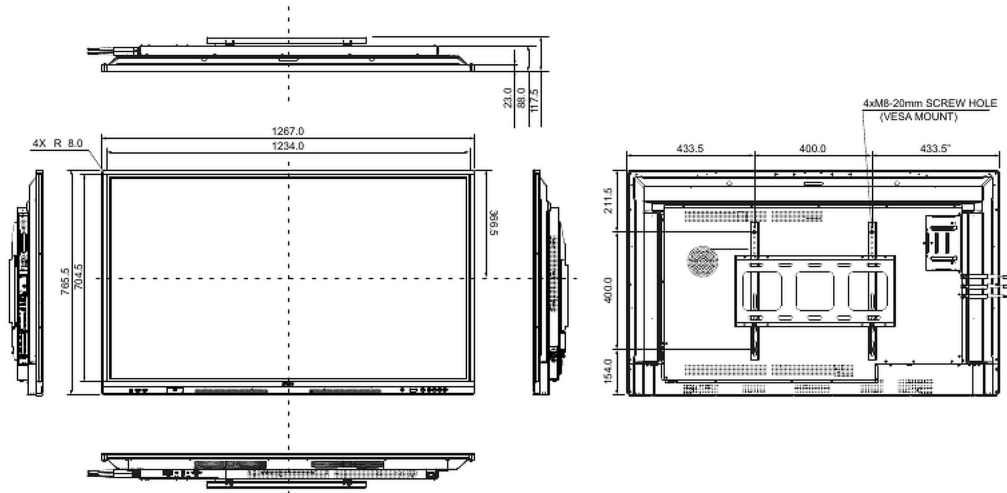
Manufacturer iiyama

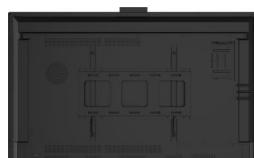
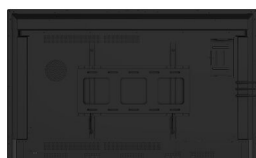
Visible screen diagonal 139cm; 55"; (55" segment)

ON mode power consumption 126W

Annual energy consumption 126kWh/annum*

Power in OFF Mode 0.5W off mode





TE INTERACTIVE SERIES **iiyama**
TOUCH PENS WITH DUAL FUNCTION
TIPS AND ANTI-BACTERIAL COATING



x4

TE INTERACTIVE SERIES *iiyama*
MOUNTING BRACKET FOR WEBCAM



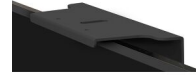
TE INTERACTIVE SERIES *iiyama*
MOUNTING BRACKET FOR WEBCAM



TE INTERACTIVE SERIES *iiyama*
MOUNTING BRACKET FOR WEBCAM



TE INTERACTIVE SERIES *iiyama*
MOUNTING BRACKET FOR WEBCAM



All trademarks and registered trademarks acknowledged. E & O E. Specification subject to change without notice. All LCD's comply with ISO-9241-307:2008 in connection with pixel defects. © **IYAMA CORPORATION. ALL RIGHTS RESERVED**