



# T45F wide mainstream monitor

24" Wide Monitor | LF24T450GYU

Experience clarity and efficiency with the Samsung T45F wide professional monitor.

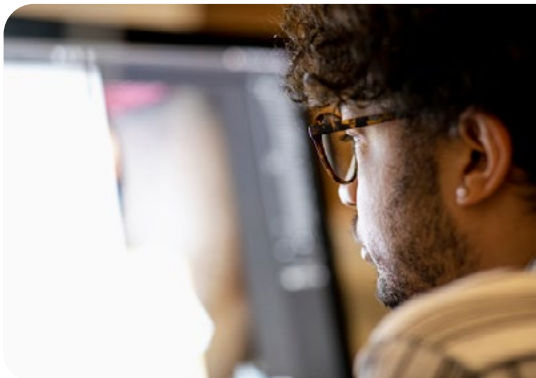
Partner Logo



## Experience

From the design of the bezels to intuitive tools, our monitors offer enhanced user experience.

- Flat Display (24" wide IPS)
- Connectivity (DVI, 1xDP, 1xHDMI, 5xUSB)
- 16.7 Million Colors
- Speakers (2x1W)



## Well-being

Our products maximise viewing comfort, while protecting against eye strain.

- Eye Saver Mode (Minimize blue light emission)
- Flicker Free
- Ergonomic Stand (HAS, Tilt, Swivel & Pivot)
- Wall Mount (100 x 100)



## Sustainability

We work to push technology forward with more environmentally conscious innovations.

- Eco Saving Plus<sup>1</sup> (use up to 10% less energy)
- TCO Certified<sup>2</sup> (9.0)
- EPEAT Silver<sup>3</sup>

Please see back page for disclaimers.

Unlock your business potential in the new world of work.

**SAMSUNG**

# T45F wide mainstream monitor

LF24T450GYU



## Key features



**See more with less scrolling:** A taller aspect ratio allows users to view more of their work content with less scrolling, boosting productivity in any business environment. With a 16:10 screen, custom B2B programs are now shown as intended for a completely optimized computing experience.



**Borderless monitors:** Minimal bezel brings maximum concentration. The virtually borderless screen shows a full picture and looks almost gapless when used in a dual-monitor setup. See more at once with fewer distractions.



**Eco Saving Plus<sup>1</sup>:** Eco Saving Plus technology can reduce up to 10% of power consumption when compared with the maximum brightness level by adjusting the brightness of the screen's black sections automatically.



**USB Hub:** Extend the connectivity of the PC by connecting it to your monitor and using its USB ports.



**HDMI:** HDMI can be used to transmit audio and video data from an HDMI-compliant source device, like a laptop, tablet or desktop PC, to a computer monitor.



**DisplayPort (DP):** DisplayPort can be used to transmit audio and video from a DisplayPort-equipped external device to a computer monitor. DisplayPort supports FreeSync.

## The perfect pose



Swivel



Tilt



Pivot



HAS

Height Adjustable Stand

## 3 year warranty

### What's in the box?

HDMI Cable  
Power Cable  
USB 3.0 Cable

Accessories may differ by country.

## Connectivity

- 1 Audio IN
- 2 Headphone IN
- 3 USB 2.0 for Service
- 4 USB 2.0
- 5 DisplayPort IN
- 6 HDMI IN
- 7 DVI IN
- 8 USB 3.0
- 9 PC IN
- 10 USB 3.0



Please see back page for disclaimers.

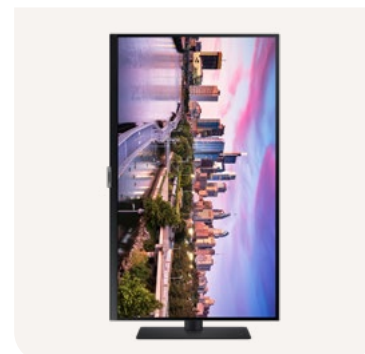
Unlock your business potential in the new world of work.

**SAMSUNG**

# T45F wide mainstream monitor



		LF24T450GYU	
<b>Display</b>	Screen Size	24" Wide	
	Resolution	1920x1200	
	Flat/Curved	Flat	
	Aspect Ratio	16:10	
	Panel Type	IPS	
	Brightness in cd/m2 (Typ)	250	
	Contrast Ratio Static	1000:1	
	Color Support	16.7 Million	
	Color Coverage	72% (CIE1931) NTSC	
	HDR	No	
	Refresh rate	75Hz	
	Response Time (GTG)	5ms	
	<b>Connectivity</b>	D-Sub (Analog)	No
DVI		1x	
HDMI		1x 1.4	
Display Port (DP)		1x 1.2	
Display Port Out		No	
USB 2.0		2x	
USB 3.0		3x	
Ethernet (LAN)		No	
<b>Other</b>	Headphone	1x	
	Speakers	2x 1W	
	Built-in Camera / KVM Switch	No / No	
	Additional Features	Eco Saving Plus <sup>1</sup> , Flicker Free, Eye Saver Mode	
	Certifications, Standards & Licenses	TCO Certified (9.0) <sup>2</sup> EPEAT Silver <sup>3</sup>	
	Ergonomic Stand	Tilt:	-3.0°(±2.0°) ~ 25.0°(±2.0°)
		Swivel:	-45.0°(±2.0°) ~ 45.0°(±2.0°)
		Pivot:	-1.0°(+0.0°, -2.0°) ~ 95.0°(±2.0°)
		HAS:	130.0mm(±2.0mm)
	Power Consumption (Typ)	14W	
Set Dimension (WxHxD)	With Stand:	534.0 x 386.3 x 224.0 mm	
	Without Stand:	534.0 x 354.5 x 44.9 mm	
Set Weight	With Stand:	5.5kg	
	Without Stand:	4.1kg	



Please see back page for disclaimers.

Unlock your business potential in the new world of work.

**SAMSUNG**

# SAMSUNG

## **Samsung Electronics Co. Ltd.**

Samsung Electronics Co., Ltd. inspires the world and shapes the future with transformative ideas and technologies. The company is redefining the worlds of TVs, smartphones, wearable devices, tablets, cameras, digital appliances, medical equipment, network systems, and semiconductor and LED solutions. For the latest news, please visit the Samsung Newsroom at [news.samsung.com](https://news.samsung.com).

Find out more at:

[displaysolutions.samsung.com](https://displaysolutions.samsung.com)

All tests and measurements were conducted by Samsung internally.

<sup>1</sup>Based on internal testing data of S80PB, S80TB and T45F monitors only. Testing compared energy usage of these models with Eco Saving Plus mode switched on high setting and switched off. Actual energy savings may vary based on usage conditions, brightness levels, and model selected. Eco Saving Plus is not available in Dynamic Contrast Mode, Game Mode, Eye Saver Mode, or when PIP/PBP Mode is on.

<sup>2</sup>See [www.tccertified.com](https://www.tccertified.com) for more information.

<sup>3</sup>See [www.epeat.net](https://www.epeat.net) for more information.

Copyright © 2023 Samsung Electronics Co. Ltd. All rights reserved. Samsung is a registered trademark of Samsung Electronics Co. Ltd. Specifications and designs are subject to change without notice. Non-metric weights and measurements are approximate. All data were deemed correct at time of creation. Samsung is not liable for errors or omissions. All brand, product, service names, and logos are trademarks and/or registered trademarks of their respective owners and are hereby recognized and acknowledged.

Samsung Electronics Co. Ltd.  
416, Maetan 3-dong, Yeongtong-gu, Suwon-si, Gyeonggi-do 443-772, Korea.