

Power distribution for IT equipment

Basic
In-Line Metered
Metered Input

Metered Outlet
Switched
Managed

Rack PDU G3+

2019 Version



EATON

Powering Business Worldwide

Rack PDU G3+

New features 2019	G3+ range	G3 range
Extra flat breaker: avoid accidental tripping	✓	
P-Lock & eGrip plugs: secure your IEC power cable	✓	
Alternating Phase 3P-32A: Natural load balancing	✓	
Stronger mounting system	✓	
Daisy chain up to 3 sensors: Collect more environmental data's per rack	✓	✓ ¹
Cybersecurity enhancement	✓	✓ ¹
USB Smart Commissioning Tool (Coming later): Fast individual configuration deployment	✓	✓ ¹

1. available with the latest firmware 4.x or later

Outlets with dual built-in security mechanism New

eGrip system to secure standard IEC power cables (Eaton's patent-pending) with a lever-actuated grip that's integrated into each outlets. Once the levers click into the grip position, the plugs are secured from accidental disconnect due to bumps or vibrations. Outlets are also compatible with a **locking system** using IEC P-Lock power cables.



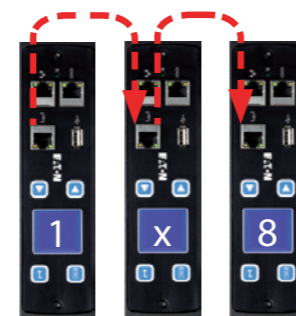
Hot-swap capability

Eaton's hot-swap control module can be replaced without the need to power down your rack. Increase uptime while enhancing service ability and saving on unnecessary service calls. The menu-driven pixel display allows for easy setup and troubleshooting.



Daisy chain eight units from one IP address

Eaton's new patented daisy-chain capability allows up to eight ePDUs to share the same network connection and IP address. Eaton technology provides a 87% percent reduction in network infrastructure costs.



Natural load balancing by design New

Alternating phase per section on all 3 Phase 32A ePDUs to naturally balanced the rack power load using shorter cables.



Quickly identify load protection and phase with color coded sections

One color for each phase, one letter per breaker protection.



Provide zero interference into the rail space New

New extra flat breakers and low-profile form factor chassis to avoid accidental tripping.

Upgrade your power distribution

Control power at server level

Outlet switching: Remotely control devices by powering on or off individual outlets. Save time and operating costs by rebooting machines from your control center without costly site visits.

Sequential start up: Make sure your servers start sequentially to avoid in rush current and start your database before the application.

Turn off unused outlets: Control unauthorized use.

Daisy Chain Sensor New

Daisy chain up to 3 sensors per rack PDU to get more environmental data's from your rack. Each sensor has 1 temperature probe, 1 humidity probe and 2 dry contacts.

Cybersecurity enhancement New

The firmware is updated on regular basis to keep the ePDU cybersecurity to highest standard

High 60°C operating temperature

Fully functional in high operating temperature environments, resulting in reduced cooling costs.

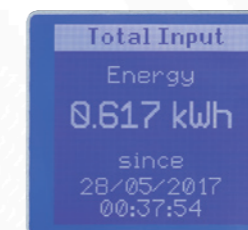
Universal mounting system New

Vertical units (0U) include both rear & side button mounting system stronger than before and Eaton's patented variable clip feet. Horizontal units (1U/2U) come with rack ear support.



±1% Accurate Power Measurement

ePDU G3 provides one percent revenue-grade power monitoring for higher accuracy in department billing or colocation data centers. Effectively measure power usage to all outlets or individual outlets.



Device reboot and measurement across A and B feed

When connecting multiple source input servers to an A and B feed power source, the daisy-chain capability allows you to group power supplies across the ePDU. As a result, all the power supplies are controlled with a single action, which saves time rebooting servers with two to six power supplies. The power consumption is available for each device.



ePDU G3+ Key features & technical specification



	Basic	In-Line Metered	Metered Input	Metered Outlet	Switched	Managed
Basic features	✓	NA	✓	✓	✓	✓
Outlets with dual built-in security mechanism eGrip & P-Lock	✓	NA	✓	✓	✓	✓
Colour-coded outlet and branch circuits for simple load balancing	✓	NA	✓	✓	✓	✓
60°C Operating temperature	✓	✓	✓	✓	✓	✓
Universal rack mounting system (button & clip feet)	✓	✓	✓	✓	✓	✓
Alternating phase per sections (available on 3Phase 32A PDU)	✓	✓	✓	✓	✓	✓
Hot-Swap Control module with Advanced LCD + Optional Temp/Humidity sensor			✓	✓	✓	✓
±1% IEC Class 1 Billing Grade Accuracy for V, W, A and kWh & Cisco EnergyWise compliant		✓	✓	✓	✓	✓
Phase Metering, Circuit Breaker Current Metering and Input Metering		✓	✓	✓	✓	✓
Daisy-Chain up to 8 ePDUs, reduce network infrastucture costs		✓	✓	✓	✓	✓
Power chain monitoring & Real time Intelligence on your Data Center, via Eaton and advanced action on virtual environment via Eaton IPM Edition		✓	✓	✓	✓	✓
Protocols & standards HTTPS, SSL, Telnet, FTP, SNMP, SMTP, DHCP, LDAP, RADIUS, DHCP 66/67 for Mass Configuration		✓	✓	✓	✓	✓
Advanced features						
Circuit Breaker Status Monitoring				✓	✓	✓
Outlet and IT Equipment Metering across A and B feed				✓		✓
Level 3 PUE measurements				✓		✓
Turn off unused outlets to control commissioning					✓	✓
Outlet and IT Equipment Switching/reboot/sequencing across A and B feed					✓	✓

	Input Type / Rating (A)	Outlet type: Qty	Breakers	Nominal Power	In-Line Metered & Dual p/n		Metered Input p/n		Metered Outlet p/n		Switched p/n		Managed p/n			
					Basic p/n	Dimensions L x W x D, mm	Metered Input p/n	Dimensions L x W x D, mm	Metered Outlet p/n	Dimensions L x W x D, mm	Switched p/n	Dimensions L x W x D, mm	Managed p/n	Dimensions L x W x D, mm		
1 Phase	C14 10A	8xC13		2.3kW	EBAB02	443x19"x53	1U	EMIH02	1Ux19"x203							
		12xC13		2.3kW	EBAB19	443x19"x53										
		16xC13		2.3kW	EBAB03	704x52x53		EMIB03	1070x52x53		ESWB03	1154x52x53	EMAB03	1154x52x53		
	C20 16A	8xGE: 1xC19	3.7kW	1U	EFLX8F	1Ux19"x80										
		8xGE: 1xC19	3.7kW	1U	EFLX8D	1Ux19"x80										
		6xUK: 1xC19	2 single pole	3.7kW	EFLX6B	52x19"x120										
	3 Phase	IEC60309 16A	12xC13: 1xC19	2 single pole	3.7kW	1U	EFLX12I	1Ux19"x80								
			16xC13		3.7kW	EBAB21	704x52x53									
			8xC13		3.7kW			1U	EMIH28	1Ux19"x203	1U	ESWH28	1Ux19"x203	1U	EMAH28	1Ux19"x203
		IEC60309 32A	20xC13: 4xC19		3.7kW	EBAB22	1070x52x53		EMIB22	1070x52x53	EMOB22	1604x52x53	ESWB22	1604x52x53	EMAB22	1604x52x53
			20xC13 : 4xC19		3.7kW	EBAB04	1070x52x53		EMIB04	1070x52x53		ESWB04	1604x52x53	EMAB04	1604x52x53	
			1EC60309		3.7kW				EILB13	443x52x53						
IEC60309 32A		2 x IEC60309 16A		3.7kW				EILB24	443x65x52							
		12xC13 : 4xC19	2 single pole	7.4kW			2U	EMIB06	1070x52x53				2U	EMAH06	2Ux19"x225	
		20xC13 : 4xC19	2 single pole	7.4kW	EBAB05	1070x52x53		EMIB05	1154x52x53	EMOB05	1604x52x53	ESWB05	1604x52x53	EMAB05	1604x52x53	
3 Phase		IEC60309 16A	28xC13 : 4xC19	2 single pole	7.4kW									EMAB71	1829x52x53	
			36xC13 : 6xC19	2 single pole	7.4kW	EBAB08	1604x52x53		EMIB08	1604x52x53						
			1EC60309		7.4kW				EILB14	443x52x53						
	IEC60309 32A	2 x IEC60309		7.4kW				EILB25	443x65x52							
		21xC13 : 3xC19		11kW	EBAB20	1070x52x53		EMIB20	1070x52x53	EMOB20	1604x52x53	ESWB20	1604x52x53	EMAB20	1604x52x53	
		36xC13 : 6xC19		11kW	EBAB00	1604x52x53		EMIB00	1829x52x53							
	IEC60309 32A Alternating phase per section	3xC13 : 6xC19	6 single pole	22kW	EBAB01	704x52x53										
		6xC13 : 12xC19	6 single pole	22kW				EMIB07	1604x52x53							
		18xC13 : 6xC19	6 single pole	22kW									EMAB33	1829x52x65		
		12xC13 : 12xC19	6 single pole	22kW				EMIB12	1604x52x53				EMAB12	1829x52x65		
		24xC13 : 6xC19	6 single pole	22kW	EBAB32	1154x52x53		EMIB32	1604x52x53							
		30xC13 : 12xC19	6 single pole	22kW				EMIB34	1829x52x65							
IEC60309 32A	1EC60309		22kW				EILB15	443x52x53								
	2 x IEC60309		22kW				EILB26	443x65x52								

* Basic G3 features not applicable for the FlexPDU range
All standard ePDUs come with 3m cable

Need Something Special? We make your custom ePDUs, please contact your local reseller.
Standard models above are stocked in Europe.



Eaton ePDU Basic G3 has a compliant environmental declaration

ePDU G3 Accessories

Accessories	Part Number	Benefits
Environmental Monitoring Probe (EMP) Gen 2	EMPDT1H1C2	Get live measurement on temperature, humidity, set threshold and be notified in real time
Adaptor Fast Ethernet Gigabit	GBCONV	Quick and easy way to upgrade your 10/100 Mb network interface G3 ePDU to Gigabit speed
ePDU to UPS cables	CBL2OUT32 CBL3OUT32	Connect an ePDU 32A input to the hardware output UPS
Water leak detector*	WLD012	Detect floods and water leaks
Door contact sensor*	DCS001	Monitor your rack access

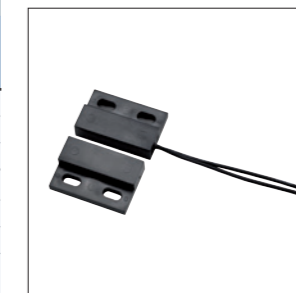
*Door contact sensor and water leak detector can be connected through EMPDT1H1C2 dry contacts



GBCONV



EMPDT1H1C2



DCS001*



WLD012*



CBL2OUT32



CBL3OUT32



All ePDU G3 come with a 2 years warranty as standard.
Standard product Warranty can be extended of 1 additional year (Warranty+1) or 3 additional years (Warranty+3)

Need Something Special? Your perfect Rack PDU on demand

Dedicated engineering teams to create your perfect Rack PDU on demand. Specific configurations or complete engineering projects

Typical requirements:

- Halogen free material, national socket types, specific number of C13/C19 outlets
- Colored ePDUs on demand to easily identify power source feed

New Dual ePDU packaging on demand to reduce environmental impact.

Add power redundancy solution for mono power supply devices

Eaton ATS are designed to provide power supply redundancy for single connection equipment. With ATS, power from two independent sources can be supplied to IT equipment, which have only one input power supply.



Both sources (primary and secondary) are connected in a straightforward manner to the ATS in the base of the rack. The Eaton ATS then controls the redundancy of this electrical power supply.

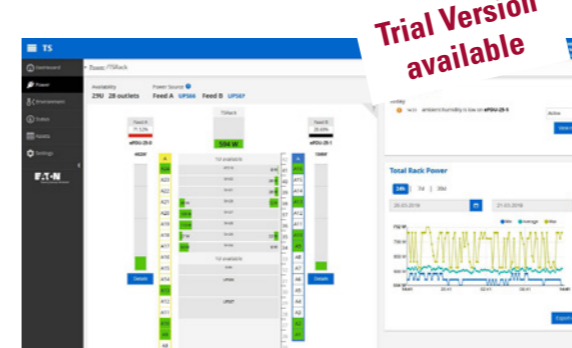
If the primary source fails, transfer to the secondary source is automatic and instantaneous.

IPM Editions, Understand and Manage your power infrastructure

IPM Understand Edition helps to bridge the gap between facility and IT management by providing you just enough information, when you need it and where you need it.

Understand Edition

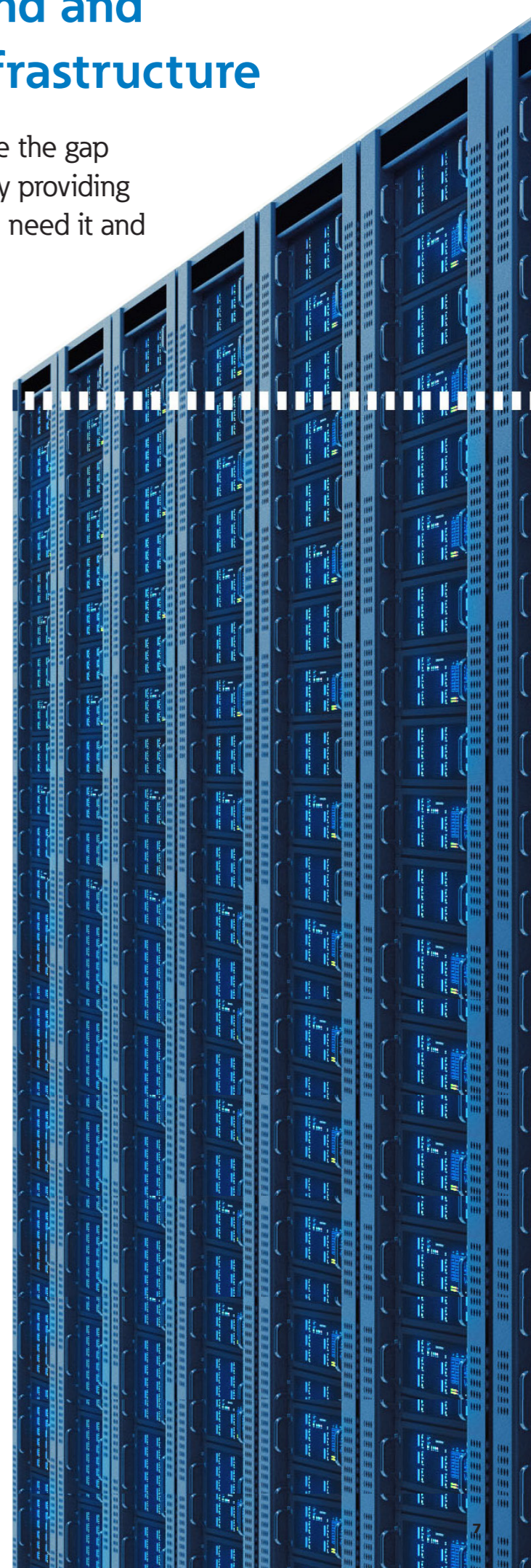
Understand your power chain infrastructure



- Monitoring of Eaton and many 3rd party power devices
- Power & Environmental reports
- Trending analysis
- Control your load balancing and power redundancy

Eaton collaborates with the leaders in converged and hyper-converged infrastructures

Our lab-validated power management solutions ensure high uptime of IT systems and data integrity in case of power and environmental issues.



New Rack PDU Selector

rackpduselector.eaton.com/gb

From, input plugs to form factors and measurement features, Eaton's RackPDU selector tool can help you find the right solution for your specific IT needs.



www.eaton.eu/ePDUG3

Changes to the products, to the information contained in this document, and to prices are reserved; so are errors and omissions. Only order confirmations and technical documentation by Eaton is binding. Photos and pictures also do not warrant a specific layout or functionality. Their use in whatever form is subject to prior approval by Eaton. The same applies to Trademarks (especially Eaton, Moeller, and Cutler-Hammer). The Terms and Conditions of Eaton apply, as referenced on Eaton Internet pages and Eaton order confirmations.

Eaton
EMEA Headquarters
Route de la Longeraie 7
1110 Morges, Switzerland
Eaton.eu

© 2019 Eaton
All Rights Reserved
Printed in Europe
Publication No. BR155022EN
June 2019

Eaton is a registered trademark.
All other trademarks are property
of their respective owners.

Follow us on social media to get the
latest product and support information.

