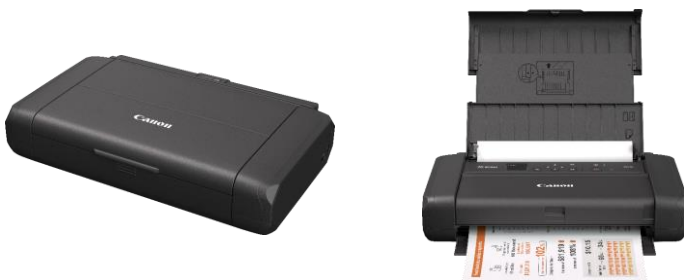


PIXMA TR150 with battery

PRINT ON THE GO, WHEREVER YOU ARE

Stay on task with a rechargeable battery. Take control with wireless printing from a PC, laptop or smart device and print text or borderless photos up to A4. For fast results, save up to 5 templates and print at the touch of a button.



- **Print on the road**
Sleek and robust for easy transport, print up to 330 pages from a new battery's full charge¹ and top up in the office, at home or on the move via a USB Type C cable or AC adaptor
- **Couple up with easy connectivity**
Link up with Wireless Connect and control via the Canon PRINT app, AirPrint (iOS), Mopria (Android) or Windows 10 Mobile. No internet router? Tap into Wireless Direct
- **Look sharp with superb quality**
Get crisp prints with superb quality in darker areas. Hybrid ink with a dedicated pigment black ink creates sharp text while dye-based colours give vivid prints with up to 100 years of album life²
- **Keep it simple**
Print and check ink and connection status via the 1.44" OLED screen and work quietly and quickly with print speeds of 5.5ipm colour and 9ipm mono³
- **Custom fit**
Save time with quick-fire printing. Store up to 5 custom templates⁴ to print contracts and forms straight from the printer without a PC, laptop or smart device



USB Charge



Battery, Attachment



Mobile Device Printing



Connectivity



Direct Wireless Connection



PRODUCT RANGE



Canon PIXMA TR150

Canon PIXMA TR150

Canon PIXMA TR150 with battery



Canon PIXMA TR150 with battery

Canon

Live for the story_

¹ Printed via USB connection without Wi-Fi connection

² Based on accelerated testing by Canon in dark storage under controlled temperature, humidity and gas conditions, simulating storage in an album with plastic sleeves. Canon cannot guarantee the longevity of prints; results may vary depending on printed image, drying time, display/storage conditions, and environmental factors

³ Document print speeds are the averages of ESAT (Word, Excel, PDF) in Office Category Test for the default simplex mode, ISO/IEC 24734. Print speed may vary depending on system configuration, interface, software, document complexity, print mode, page coverage, type of paper used etc

⁴ Templates need to be loaded onto the printer via the Canon printer driver using Windows PC only.

TECHNICAL SPECIFICATIONS

PIXMA TR150 with battery

GENERAL SPECIFICATIONS

Functions	Wi-Fi, Print, Cloud
PRINTER SPECIFICATIONS	
Print Resolution	Up to 4800 x 1200 dpi ^[1]
Print Technology	2 ink cartridges: Black (Pigment BK) and Colour (BK, C, M, Y) Inkjet FINE print head Chromalife100 System approx. 9.0 ipm ^[2]
Mono Print Speed	approx. 5.5 ipm ^[2]
Colour Print Speed	Borderless 10x15cm : Approx. 53 seconds ^[3]
Photo Print Speed	Yes
Borderless Printing	(A4, LTR, 4"x6", 5"x7", 7"x10", 8"x10", 5"x5", 3.5"x3.5") ^[15] Manual operation
Two Sided Printing	
CARTRIDGES AND YIELDS	
Standard Ink Cartridges	PGI-35 Black CLI-36 Color
Cartridge Yield (Plain paper)	A4 Colour Document ^[4] PGI-35 Pigment Black: 200 pages CLI-36 Colour: 260 pages * Estimated supplemental yield
Cartridge Yield (Photo print)	10x15cm photo ^[5] PGI-35 Pigment Black: 7113 photos* CLI-36 Colour: 102 photos * Estimated supplemental yield
PAPER SUPPORT	
Paper Types	Plain Paper Canon High Resolution Paper (HR-101N) Canon Plus Glossy II (PP-201) Canon "Everyday Use" (GP-501) Canon Matte (MP-101) Canon Double Sided Matte (MP-101D) Envelopes Removable Photo Stickers (RP-101) Magnetic Photo Paper (MG-101)
Maximum Paper Input	Rear Tray: Max. 50 sheets (plain paper)
Paper Sizes	Rear Tray: A4, A5, B5, LTR, LGL, Envelopes (DL, COM10), Square (5"x5", 3.5"x3.5"), Card Size (91 x 55 mm), 4"x6", 5"x7", 7"x10", 8"x10" [Custom size] width 55 mm - 215.9 mm, length 89 mm - 676 mm
Paper Weight	Rear Tray: Plain paper: 64 - 105 g/m ² Canon specialty paper: max paper weight : approx. 275 g/m ² (Photo Paper Plus Glossy II PP-201)
GENERAL	
Display	1.44"/3.6cm OLED Display (Monochrome)
Standard Interface	Hi-Speed USB (USB Type C) Wi-Fi: IEEE802.11 b/g/n/a ^[11] Wi-Fi Security: WPA-PSK, WPA2-PSK, WEP, Administration password Wireless LAN Frequency Band: 2.4 GHz, 5 GHz EU (GB and EUR area) Direct mode cannot use the 5 GHz band. Wireless PictBridge ^[22]

Mobile Apps (iOS®/ ANDROID™)

Printer Features

Smart Assistant & Automation Support

OS Compatibility

Minimum System Requirements

Software Included

PHYSICAL FEATURES

Weight

Dimensions (W x D x H)

Acoustic Noise Levels

Operating Temperature

Operating Humidity

Power Source

Power Consumption

Typical Electricity Consumption

PORTABLE BATTERY

Type

Voltage Level

Charging Time (hrs)

Remaining Indication

Printable Pages

Canon PRINT app ^[14] Easy-PhotoPrint Editor app ^[21] Message In Print app ^[18] Easy-PhotoPrint Editor Software ^[21] PIXMA Cloud Link ^[14] Canon Print Service Plugin (Android) ^[24] Google Cloud Print ^[17] Apple AirPrint ^[12] Wireless Direct ^[16] Mopria (Android) ^[13] Amazon Alexa ^[20] Google Assistant ^[20] IFTTT (If This Then That) Support ^[19] Windows 10, Windows 8.1, Windows 7 SP1 Operation can only be guaranteed on a PC with pre-installed Windows 7 or later. Printer driver, IJ Printer Assistant Tool and IJ Network Device Setup Utility are available with following OS. Windows Server 2008 R2 SP1, Windows Server 2012 R2, Windows Server 2016, Windows Server 2019 Mac: OS X 10.11.6, macOS 10.12~macOS 10.15 Mobile Operating Systems: iOS®, Android™, Windows 10 Mobile ^[23] Windows: 2.0GB or more Mac: 1.0GB or more Note: for bundled software installation. The necessary amount of hard disk space required. Display: 1024 x 768 XGA Printer Driver IJ Printer Assistant Tool Easy-PhotoPrint Editor (download)

approx. 2.3 kg

Approx. 322 x 210 x 66 mm

approx. 40.5dB(A)^[7]

5-35°C

10-90%RH (no dew condensation)

AC 100-240V, 50/60Hz

Off: Approx. 0.3W

Standby (USB connection to PC): Approx. 1.1W

Standby (all ports connected): Approx. 1.7W

Time to enter Standby mode: 3 minutes

Printing: Approx. 8W^[6]

0.24 kWh^[8]

Lithium-ion

DC10.8V 2170mAh

approx. 2 hours 20 min (AC adaptor)

approx. 5hours (USB1.5A)

LED 4 steps

approx. 330 sheets (USB connection to PC)^[10]



TECHNICAL SPECIFICATIONS

PIXMA TR150 with battery

Footnotes

- [1] Ink droplets can be placed with a minimum pitch of 1/4800 inch
- [2] A4 document print speed on plain paper is measured based on average of ESAT in Office Category Test of ISO/IEC 24734 standard.
- [3] Photo print speed is based on default driver setting using ISO/JIS-SCID N2 standard on Canon Photo Paper Plus Glossy II and does not take into account data processing time on host computer.
- [4] Page Yield is the estimated value based on Canon individual test method using the ISO/IEC 24712 chart and continuous printing simulation with the replacement after initial setup.
- [5] Page Yield is the estimated value based on Canon individual test method using the ISO/IEC 29103 chart and continuous printing simulation with the replacement after initial setup.
- [7] Plain Paper (A4, B/W). Acoustic Noise is measured based on ISO7779 standard.
- [8] Typical Electricity Consumption (TEC) value: TEC value was calculated assuming the unit will be constantly switched among operational mode, sleep mode, and power-off mode for 5 days, and that it will be either in sleep or power-off mode for the remaining 2 days within the same week. The TEC value of this product is calculated by Canon on their own accord using TEC measurement procedure regulated in international ENERGY STAR Program.
- [9] Print: When copying ISO/JIS-SCID N2 (printed by inkjet printer) on A4 size plain paper using default settings.
- [10] Conditions: Tested under normal temperature and humidity, using fully-charged new battery, printing ISO/IEC 24712 files (5 patterns) continuously in color on A4 plain paper in Standard mode of printer driver.
- [11] Wireless printing requires a working network with wireless 802.11 b/g/n/ac or ad capability, operating at 2.4GHz or 5Ghz. Wireless performance may vary based on terrain and distance between the printer and wireless network clients.
- [12] AirPrint functionality requires a compatible iPad, iPhone, or iPod Touch device running iOS 7.0 or later, and an AirPrint-enabled printer connected to the same network as your iOS device.
- [13] Requires Android mobile device with Android 4.4 operating system or later with the Mopria Print Service pre-loaded with that device and the compatible PIXMA printer on the same wireless network. The Mopria experience is also available on Android 4.4 mobile devices with a download of the Mopria Print Service from Google Play.
- [14] Requires an Internet connection and the Canon PRINT Inkjet/SELPHY app, available for free on the App Store and at Google Play. Compatible with iPad, iPhone 3GS or later, and iPod touch 3rd generation or later devices running iOS 7.0 or later, and Android mobile devices running Android 2.3.3 or later. Your device must be connected to the same working network with wireless 802.11 b/g/n/a capability as your printer. Requires a compatible social media account and is subject to that social media accounts Terms of Service. Certain exceptions may apply.
- [15] Paper types NOT supported for borderless printing are as follows: Envelope, High Resolution Paper, T-Shirt Transfer, Photo Stickers
- [14] Requires a smart device with the Canon PRINT Inkjet/SELPHY app installed and connected to the desired active wireless network to complete cableless setup.
- [17] Requires an Internet connection and Google account. Subject to Google Terms of Service. Certain exceptions may apply.
- [18] Requires an Internet connection and the Message In Print app, available for free on the App Store and at Google Play. Compatible with iPad and iPhone 6 or later devices running iOS 10 or later, and Android mobile devices running Android 5.1 or later. Your device must be connected to the same working network with wireless 802.11 b/g/n/a capability as your printer. Requires original content to be created using the Message In Print app/service, then printed on a compatible Canon Printer released in August 2009 or later and delivered to recipient, who views image and content through the compatible Message In Print app on their compatible device. Compatible paper sizes include 3.5"x3.5", 4" x 6" and 5" x 5" Square only, and compatible media types include Genuine Canon Photo Paper Glossy, Photo Paper Semi-Gloss, Photo Paper Luster and Photo Paper Matte only. Certain exceptions may apply.
- [19] Requires an active IFIT account, the printer to be actively connected with permission to the Canon Inkjet Cloud Printing Center, and an IFIT 'applet' installed/enabled and required active account/service linked to the printer
- [20] Requires an active smart assistant account linked and accompanying app enabled, the smart device and printer to be actively connected with permission to the Canon Inkjet Cloud Printing Center, and the required action(s), skill(s), or applet(s) available/enabled to the compatible printer. Voice commands can not be displayed as text on Amazon smart devices with screens. Only English, French and German supported.
- [21] The Easy-PhotoPrint Editor software requires an Internet connection and is compatible with the following operating systems: Microsoft Windows 10 (64-bit/32-bit), Microsoft Windows 8.1 (64-bit/32-bit), Microsoft Windows 7 SP1 (64-bit/32-bit), macOS High Sierra v10.13, macOS Sierra v10.12, Mac OS X El Capitan v10.11 and Mac OS X El Capitan v10.10.5. Minimum Windows and macOS/Mac OS X requirements are: 2GB of RAM and a monitor with 1024x768 resolution. The Easy-PhotoPrint Editor mobile application requires an Internet connection and the Easy-PhotoPrint Editor app v1.1.0, available for free on the App Store and at Google Play. Compatible with iPad Air2 (2nd Generation), iPad Mini 4 and iPhone 6s or later devices running iOS 10 or later, and Android mobile devices running Android 5.x or later. Certain exceptions may apply. The following file formats are supported: JPEG, PNG, HEIF (devices running iOS 11 and mac OS v10.13 or later), DLP save data, Poster Artist export data, EasyPhoto+ export data, Easy-PhotoPrint Editor export data.
- [22] DPS over IP compatible device required.
- [23] Some functions may not be available with these Operating Systems. Please refer to the manual or website for details.
- [24] Canon Print Service is a print plug-in for Android smart devices, which enables printing from Android v4.4 - v5.0 devices to many Canon printers via a Wi-Fi network. The plug-in does not work as a standalone app. Available for free at Google Play.

Standard disclaimers

All specifications subject to change without notice.

Print speed may vary depending on system configuration, interface, software, document complexity, print mode, page coverage, type of paper used etc.

Ink yield may vary depending on texts/photos printed, applications software used, print mode and type of paper used. For yield information see www.canon-europe.com/ink/yield

All brand and product names are trademarks of their respective companies.

Microsoft, Windows and the Windows logo are trademarks, or registered trademarks of

Microsoft Corporation in the United States and/or other countries.

Canon Inc.

canon.com

Canon Europe

canon-europe.com

English edition

Canon Europa NV 2020

Live for the story_

**PRINT ON THE GO,
WHEREVER YOU ARE**

PIXMA TR150 with battery

Stay on task with a rechargeable battery. Take control with wireless printing from a PC, laptop or smart device and print text or borderless photos up to A4. For fast results, save up to 5 templates and print at the touch of a button.

Sales Start Date: April, 2019



PRODUCT DETAILS:

Product Name	Mercury Code	EAN Code	Recommended Retail Price
PIXMA TR150 with battery	4167C026AA	4549292161823	<Please fill in RRP>

CONSUMABLES:

Product Name	Mercury Code	EAN Code	Recommended Retail Price
PGI-35 Black	1509B001AA	4960999391731	<Please fill in RRP>
CLI-36 Colour	1511B001AF	4960999391762	<Please fill in RRP>
Battery Kit LK-72	4228C003AA	4549292160871	<Please fill in RRP>

OPTIONAL CONSUMABLES:

Product Name	Mercury Code	EAN Code	Recommended Retail Price
PGI-35 Black Twin	1509B012AA	8714574572444	<Please fill in RRP>

Canon

Live for the story_

**PRINT ON THE GO,
WHEREVER YOU ARE**

PIXMA TR150 with battery

Stay on task with a rechargeable battery. Take control with wireless printing from a PC, laptop or smart device and print text or borderless photos up to A4. For fast results, save up to 5 templates and print at the touch of a button.



MEASUREMENT / LOGISTIC INFORMATION:

Product Name	Mercury Code	Pack description	Quantity per pack	Length (mm)	Width (mm)	Height (mm)	Gross Weight (kg)	Net Weight (kg)
PIXMA TR150 with battery (International Pallet)	4167C026AA	Individual	1	381.5	148.7	302.5	3.7	1.96
		Pallet (Upper)	72	1162	914.2	1228.5	270.6	266.4
		Pallet (Bottom)	72	1162	914.2	1228.5	270.6	266.4

What's in the box?

- Canon PIXMA TR150 with battery
- AC Adapter
- Power cord
- Ink Tanks: PGI-35 Pigment Black, CLI-36 CMYK Colour
- Print Head
- Set-up CD-ROM
- USB Type C cable
- LK-72 Rechargeable battery attachment
- Manuals and other documents

Canon

Live for the story_

Canon

Live for the story_